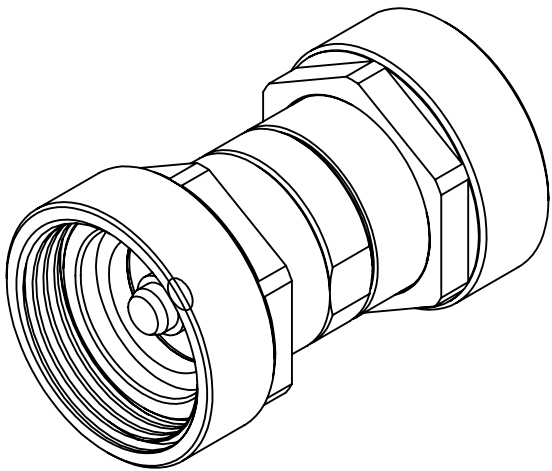


This document, including the design, configuration and mechanical features revealed herein are the sole, confidential and proprietary property of TRU Corporation. Reproduction or use thereof, in whole or part, is prohibited without the prior written consent of TRU Corporation.

REV.	DESCRIPTION	DATE	APPROVED
-	ORIGINAL ISSUE	12/28/11	AM



ENGINEERING DATA:

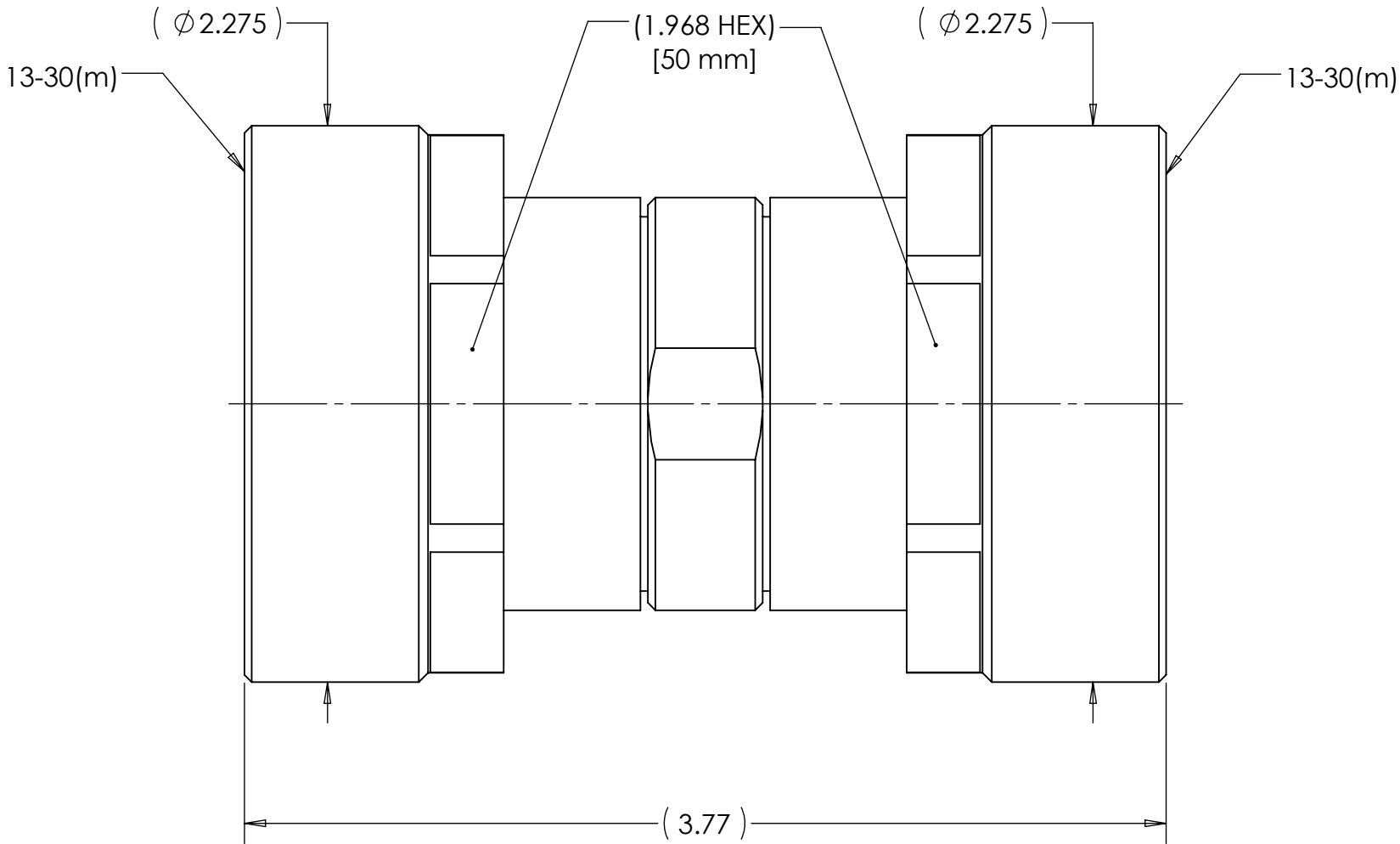
ELECTRICAL:
IMPEDANCE: 50 OHMS NOMINAL
FREQUENCY RANGE: DC to 4GHz



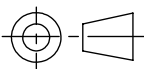
MECHANICAL:
INTERFACE: 13-30 PER IEC 60169-5

MATERIAL:
CENTER CONTACTS: BRASS
INSULATORS: PTFE
BODIES & COUPLING NUT: BRASS

FINISH:
CENTER CONTACTS: SILVER PLATED
BODIES & COUPLING NUT: NICKEL PLATED

NOTES:
1. UNLESS OTHERWISE SPECIFIED; ALL DIMENSIONS ARE FOR REFERENCE ONLY.



MATERIAL		DO NOT SCALE DRAWING		DRAWN AM		DATE 12/22/11		<div></div> <div>TRU Corporation 245 Lynnfield St, Peabody, MA 01960</div> <div>EXPERIENCE. TRU INNOVATION.</div>					
		UNLESS OTHERWISE SPECIFIED: DIMENSIONS ARE IN INCHES TOLERANCES: FRACTIONS: ± 1/64 .XX : ± .01 .XXX: ± .005 ANGLES: ± 1/2° MACHINED SURFACES: <div>63/</div>		ENG APPR. AM		DATE 12/22/11							
				MFG APPR.		DATE		TITLE: CONNECTOR, COAXIAL 13-30(m) to 13-30(m) ADAPTER					
				OTHER APPR.		DATE							
COMMENTS:		THIRD ANGLE PROJECTION 		SIZE B		DWG. NO. TRU-11881				REV -			
				CAGE CODE: 92180				SCALE: 3:2		SHEET 1 OF 1			
surface area: sq inch		weight: 1.86 lbs											