

This document, including the design, configuration and mechanical features revealed herein are the sole, confidential and proprietary property of TRU Corporation. Reproduction or use thereof, in whole or part, is prohibited without the prior written consent of TRU Corporation.

REV.	DESCRIPTION	DATE	APPROVED
-	ORIGINAL ISSUE	01/12/15	AM

ENGINEERING DATA

ELECTRICAL:
IMPEDANCE: 50 OHMS NOMINAL
FREQUENCY RANGE: DC to 3 GHz

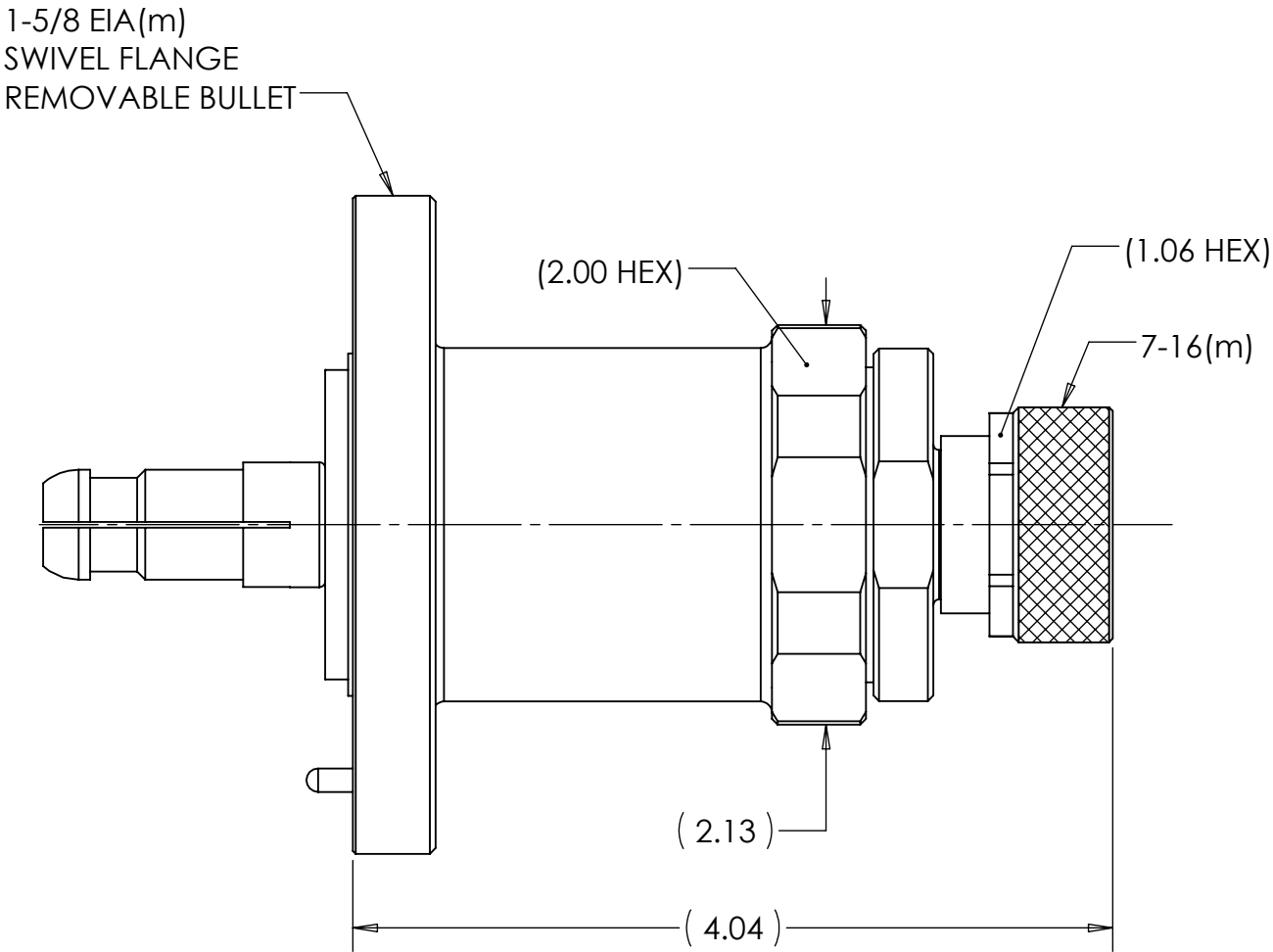
INTERFACE:
1-5/8 EIA: PER EIA RS-225 & MIL-DTL-24044
7-16(m): PER IEC 169-4



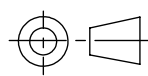
MATERIAL:
CENTER CONTACTS: BRASS & BERYLLIUM COPPER
INSULATORS: PTFE
O-RING: SILICONE RUBBER
OTHER METAL PARTS: BRASS

FINISH:
EIA BODY & COUPLING RING: NICKEL PLATED
CENTER CONTACTS & 7-16 BODY: SILVER PLATED

NOTES:

1. UNLESS OTHERWISE SPECIFIED; ALL DIMENSIONS ARE FOR REFERENCE ONLY.
2. SUPPLIED WITH THE FOLLOWING ITEMS:
 - QTY 4 5/16-18 X 1.50 HEX HEAD BOLT
 - QTY 4 5/16-18 HEX NUT
 - QTY 8 5/16 LOCKWASHER
 - QTY 1 O-RING



MATERIAL	DO NOT SCALE DRAWING		DRAWN MVC	DATE 01/05/15	 a division of WINCHESTER CORPORATION TRU Corporation 245 Lynnfield St, Peabody, MA 01960			
	UNLESS OTHERWISE SPECIFIED: DIMENSIONS ARE IN INCHES		ENG APPR. AM	DATE 01/06/15				
	TOLERANCES: FRACTIONS: ± 1/64 .XX : ± .01 .XXX: ± .005 ANGLES: ± 1/2° MACHINED SURFACES: 		MFG APPR.	DATE	TITLE: CONNECTOR, COAXIAL 1-5/8 EIA(m) to 7-16(m) ADAPTER			
	COMMENTS:		OTHER APPR.	DATE				
surface area: sq inch		weight: lbs	THIRD ANGLE PROJECTION 		SIZE B	DWG. NO. TRU-12847		REV -
					CAGE CODE: 92180		SCALE: 1:2	SHEET 1 OF 1