

## GAS FRYER

MODEL:  BDGF-ES35/NG

BDGF-ES35/NG

Our new Energy Star gas fryer is perfect for all your frying needs while being energy efficient! All of the power and performance you demand while using less natural gas than other fryers at the same production rate. The special cast iron burner technology provides the dependable heat transfer required to cook a wide range of products while effectively boosting cooking production and lowering the flue temperature.

### FEATURES AND CONSTRUCTION

- All stainless steel front, tank and ledge
- Cast iron burners
- Integrated gas control valve acts as a manual and pilot valve, automatic pilot valve, gas filter, pressure regulator and automatic main valve
- Gas control valve prevents gas flow to the main burner until pilot is established and shuts off gas flow automatically if the pilot flame goes out
- Temperature limit automatically shuts off all gas flow if the fryer temperature exceeds 450°F (232°C)
- Includes Robert Shaw components that are made in the USA
- Includes two (2) nickel plated wire mesh baskets
- One (1) nickel plated tube rack
- One (1) drain extension
- Built-in heat deflector
- 6" adjustable legs

### 3RD PARTY APPROVALS



Conforms to ANSI STD Z83.11-2016  
Certified to CSA STD 1.8-2016  
Conforms to NSF/ANSI Std.4

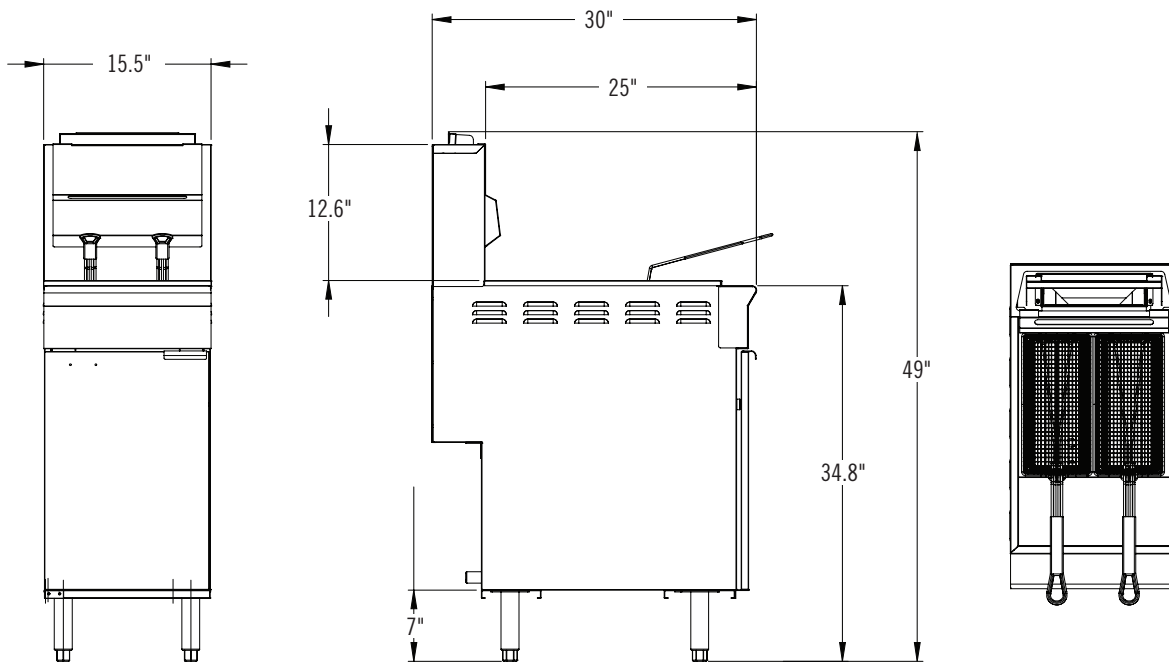
### AVAILABLE ACCESSORIES (Sold Separately)

- Stainless steel cover
- Casters
- Joiner strips
- Splash guard

### BLACK DIAMOND WARRANTY (USA / CANADA)

These units are backed by a 1 year warranty on parts & labor and a 5 year warranty on the stainless steel fry pot. For warranty, non-warranty related issues, and technical support, call NSA at 877.672.7740 or contact support@admiralcraft.com.

# BLACK DIAMOND GAS FRYER



FRONT VIEW

SIDE VIEW

TOP VIEW

## SPECIFICATIONS

| ITEM NUMBER                    | BDGF-ES35/NG      |
|--------------------------------|-------------------|
| Power Type                     | Natural Gas       |
| Total BTU                      | 65,000            |
| Overall Dimensions (W x D x H) | 15.5" x 30" x 49" |
| Fry Pots                       | 1                 |
| Number of Baskets              | 2                 |
| Temperature Range              | 200°F to 400°F    |