

NOTES: UNLESS OTHERWISE SPECIFIED

1. MATERIAL SPECIFICATIONS:

BODIES AND COUPLING NUT: BRASS PER ASTM B16  
 CONTACT AND FERRULE: COPPER ALLOY  
 INSULATOR: TEFLON PER ASTM D1710  
 RETAINING RING: PHOSPHOROUS BRONZE  
 GASKET: SILICONE RUBBER  
 SHRINK TUBE: ADVESIVE LINED POLYOLEFIN

2. FINISH SPECIFICATIONS:

BODIES: TRI-METAL OVER COPPER PER ASTM B734.  
 COUPLING NUT AND FERRULE: TRI-METAL OVER COPPER PER ASTM B734.  
 CONTACT: GOLD PER ASTM B488 OVER COPPER PER ASTM B734.

3. ELECTRICAL SPECIFICATIONS:

FREQUENCY RANGE: DC-11 GHz  
 VSWR: 1.2:1 MAX TO 8 GHz  
 1.25:1 MAX 8-11GHz  
 IMPEDANCE: 50 OHMS

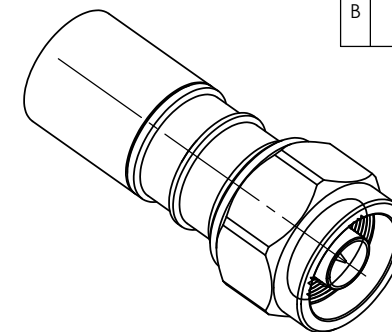
4. INTERFACE IN ACCORDANCE WITH MIL STD 348.

5. CRIMP USING .610" HEX.

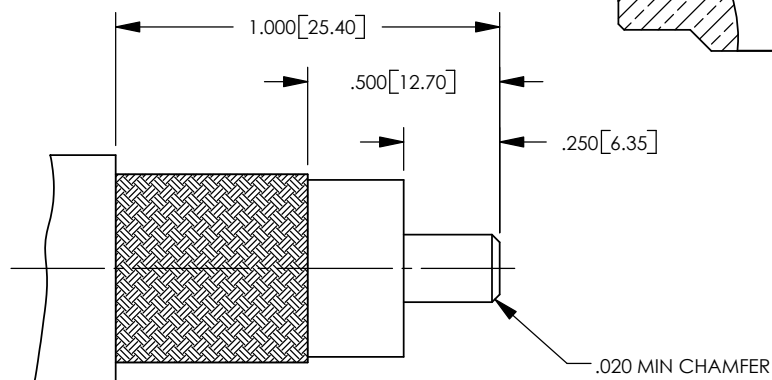
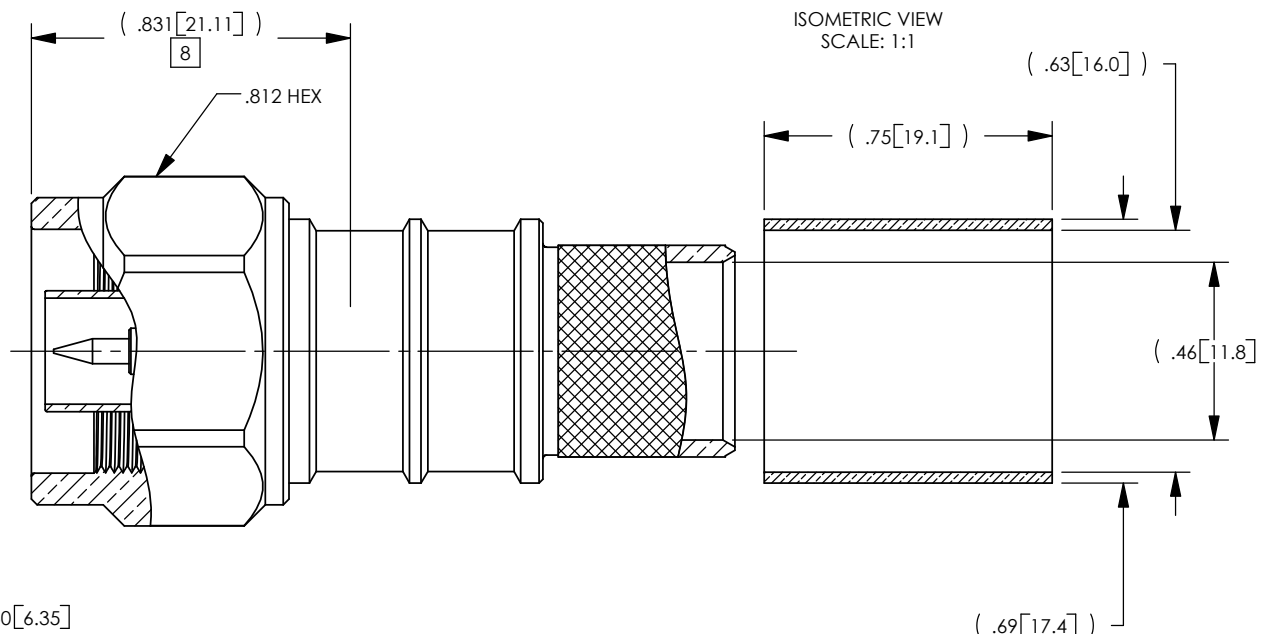
6. FOR GENERAL SERIES SPECIFICATIONS, SEE SD60-0000.

7. SHRINK TUBE (NOT SHOWN) AND FERRULE SHIPPED LOOSE.

[8] DIMENSION FROM END OF COUPLING NUT TO TIP OF  
 CABLE INNER CONDUCTOR.



ISOMETRIC VIEW  
 SCALE: 1:1



RECOMMENDED CABLE TRIM DIMENSIONS

CATALOG No. 600-900-6000R

PER ASME Y14.5M-1994 UNLESS OTHERWISE SPECIFIED: DIMENSIONS ARE IN INCHES [MM] TOLERANCES: DECIMAL: .XX ± .01 [0.3] .XXX ± .005 [0.13] .XXXX ± .XXXX ANGLES: ± 2° SCALE: 2:1				Winchester Electronics Corporation 62 Barnes Industrial Road North Wallingford, Connecticut 06492			
<b>CUSTOMER DRAWING</b>				<b>N MALE STRAIGHT PLUG, CRIMP, POINT AND SHOOT FOR LMR-600</b>			
DRAWN	DATE	APPROVED	DATE	<b>A</b> SD600-900-6000R SH1 1 OF 1 REV B			
PSM	10/21/05	RAF	11/01/05				
APPROVED	DATE	APPROVED	DATE				
WPM	11/10/05	XXX	XX/XX/XX				