

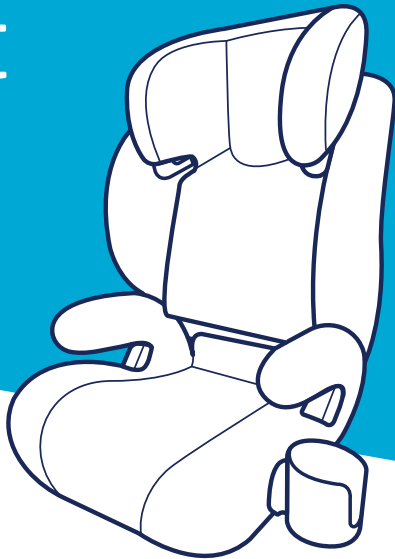


**MAXI·COSI®**

We carry the future

# RodiSport

## Booster Seat



4358-8144B  
4.21.22



**KEEP INSTRUCTIONS FOR FUTURE USE.**  
Read all instructions before using this booster seat.

**WARNING**  Failure to follow the warnings on the labels and in the instruction manual can result in serious injury or death to your child.

# Overview

Welcome to the Maxi-Cosi family and thank you for choosing this booster seat, also known as a child restraint! To help you get started using your child's new booster seat, here are the 3 main tasks you'll need to complete.



## Measure Your Child

Your child's safety is worth the time it will take to read and follow these instructions.

### Ready? Let's go!



## Place Booster Seat into Your Vehicle

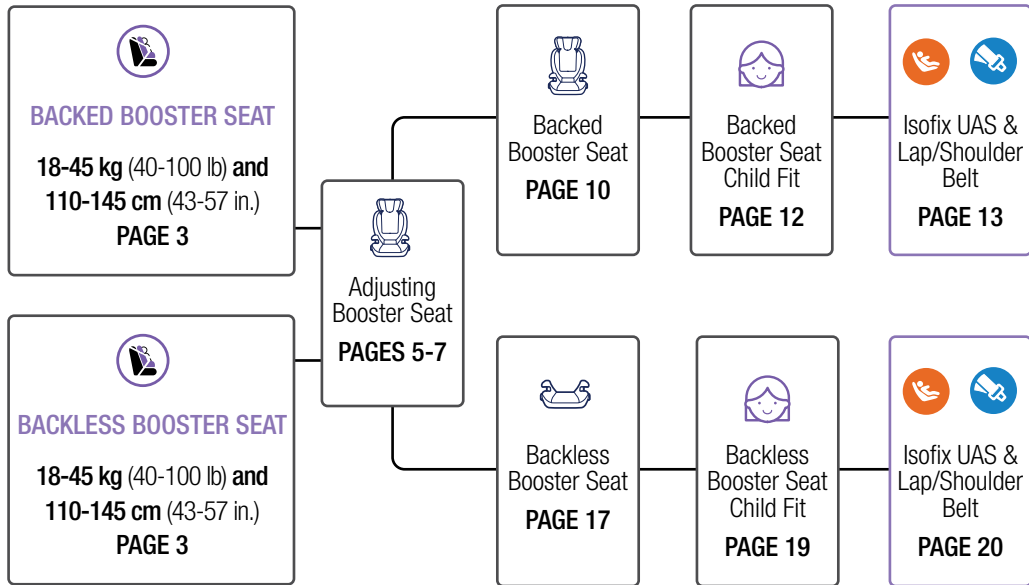
**Pages 1-2** will introduce you to the parts of the booster seat.

**Page 35** has our contact information. If at any point you would like assistance, please feel free to reach out to us.



## Buckle Up!

## Quick Navigation



# Contents

## Getting Started

Parts of Booster Seat .....	1
Accessory Use .....	2
Booster Seat Requirements.....	3

## Making Adjustments to Booster Seat

Installing Backrest .....	5
Removing Backrest .....	6
Adjusting Headrest Height & Reclining Backrest ..	7

## Isofix UAS & Vehicle Belts..... 8

## Installation in Vehicle

Backed Booster Seat.....	10
Backed Booster Seat Child Fit.....	12
Backed Isofix UAS & Lap/Shoulder Belt Use .....	13

## Backless Booster Seat ..... 17 |

Backless Booster Seat Child Fit .....	19
Backless Isofix UAS & Lap/Shoulder Belt Use .....	20

Installing Backless Booster Belt-Positioning Clip ...	23
Positioning Belt-Positioning Clip.....	24
Adjusting Length & Removing Belt-Positioning Clip .....	25

## Wash & Care of Car Seat Parts

Removing Seat Pad Set for Cleaning.....	26
Cleaning & Installing Seat Pad Set .....	27

## Safety Information

### Replacement and Expiration of Car Seat ..... 28 |

### Aircraft Information ..... 29 |

### Transport Canada Regulations..... 29 |

### Booster Seat Use ..... 29 |

### Installation in Vehicle ..... 29 |

### Vehicle Seating Position ..... 30 |

### Registration & Safety Notices..... 31 |

## Additional Information

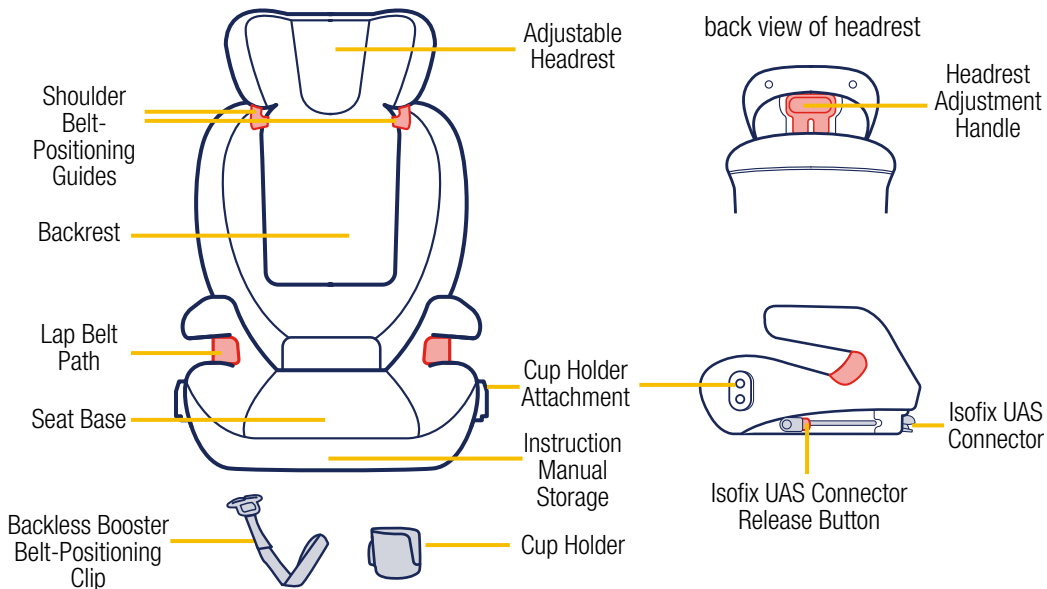
### Warranty ..... 32 |

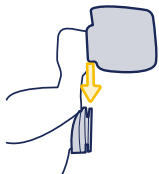
### Replacement Parts List ..... 34 |

### Dorel Juvenile Group Information ..... 35 |

# Parts of Booster Seat

1



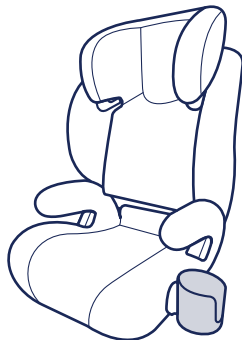
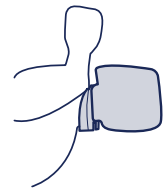


### Cup Holder

**To attach**, align the slot in the cup holder with the attachment on the side of the seat. Slide the cup holder down on to the attachment.

**To remove**, pull the cup holder up off of the attachment.

**The cup holder is top-rack dishwasher safe.**



**⚠️ Measure your child's weight and height (do not guess) before using this booster seat.**

Your child's height, weight, and age determine how a car seat should be placed in the vehicle.

Children vary widely in body size, shape, and temperament—**please consult your doctor before switching between any types or modes of a car seat within the limits and fit requirements of the seat.**

**Provincial Laws:** Please be certain to follow your province's laws regarding car seat use.

### **American Academy of Pediatrics Recommendations**

**Infants and Toddlers** Should ride in a rear-facing car seat as long as possible, until they reach

the highest weight or height allowed by their seat.

**Toddlers and Preschoolers** Once they are facing-forward, children should use a forward-facing car seat with a harness for as long as possible, until they reach the height and weight limits for their seats.

**School-Aged Children** Once they have outgrown their forward-facing car seat, children should use a belt-positioning booster seat until the vehicle's lap and shoulder seat belt fits properly. This is often when they have reached at least 4 feet 9 inches in height and are 8 to 12 years old.

**Older Children** All children younger than 13 years should be restrained in the rear seats of vehicles for optimal protection.

*continued on next page*





### BACKED BOOSTER SEAT

**18-45 kg (40-100 lb) and  
110-145 cm (43-57 in.)**

Your child can remain in this **Booster Seat** until they outgrow any one of the following:

- **Weight Limit:** 45 kg (100 lb); **OR**
- **Height Limit:** 145 cm (57 in); **OR**
- **Booster Seat** child fit requirements. See page 12.



### BACKLESS BOOSTER SEAT

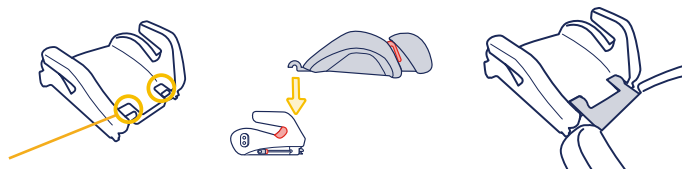
**18-45 kg (40-100 lb) and  
110-145 cm (43-57 in.)**

Your child can remain in this **Booster Seat** until they outgrow any one of the following:

- **Weight Limit:** 45 kg (100 lb); **OR**
- **Height Limit:** 145 cm (57 in); **OR**
- **Booster Seat** child fit requirements. See page 19.

**Locate Backrest Connection Slots in Seat & Slide Backrest Attachment Hooks into Slots.**

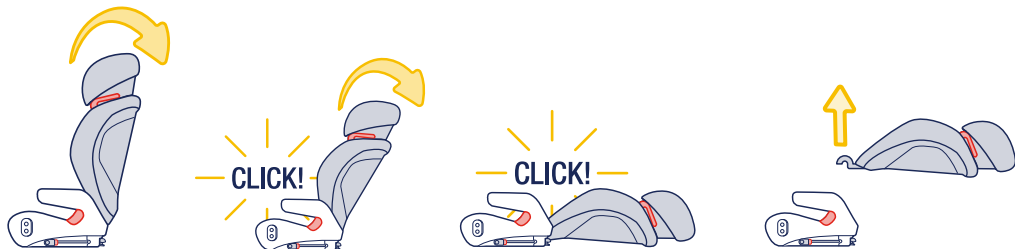
You may need to push the seat pad flap back to reveal slots.



**Rotate Backrest All The Way Forward. It Will Click Twice.**

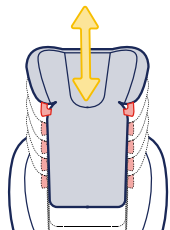
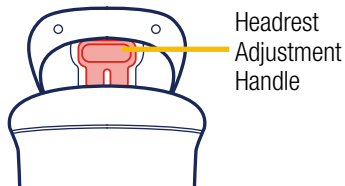


**Rotate Backrest All The Way Back. It Will Click Twice. Then Lift Backrest Out of Seat.**



The headrest has multiple height positions.

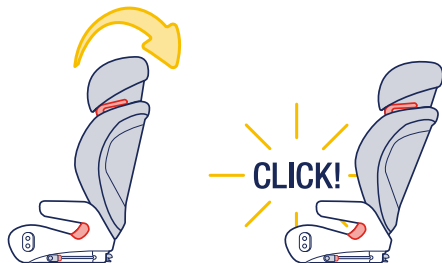
back view of headrest



**Squeeze Headrest Adjustment Handle & Raise or Lower Headrest to Desired Position**

The reclined position is only to be used to install the booster seat flush against the vehicle seat back.

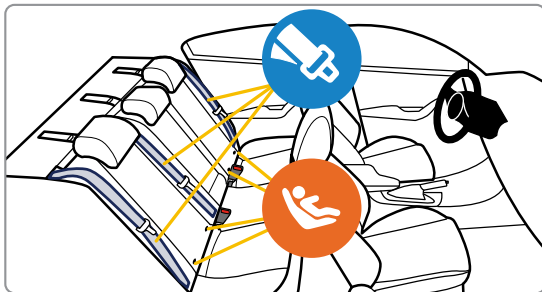
**Vehicle seat back must be upright.**



**Rotate Backrest Backwards Until It Clicks Once**



## Isofix UAS & Vehicle Belts



Your vehicle's features may be considerably different than those pictured here.

**Not all vehicle belts and seating positions will work with child restraints.**

The UAS (Universal Anchorage System) is a universal system for installing child restraints. This Isofix UAS can only be used in vehicles that have the UAS anchor bars installed and designated UAS seating positions. This Isofix UAS cannot be used with raised UAS anchors in the vehicle seat back.



### You must review your vehicle owner's manual.

It will let you know which vehicle belts and seating positions child restraints can be installed in and which seating positions may be equipped with UAS: anchor bars.

#### Must Use With This Booster Seat

Lap/Shoulder Belts	
--------------------	---



#### Never Use With This Booster Seat

Lap Only Belts	
Inflatable Seat Belts	



## Backed Booster Seat

**18-45 kg (40-100 lb) and 110-145 cm (43-57 in.)**



**Isfix UAS +  
Lap/Shoulder Belt**



**Keep booster seat  
secured to the  
vehicle with the  
Isfix UAS or  
vehicle belt even  
when unoccupied.**



**Use only the vehicle's lap and  
shoulder belt system when re-  
straining the child in this booster  
seat.**



**Do not use only the lap belt when  
using this booster seat.**

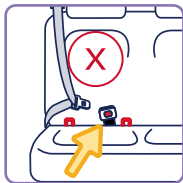



**The shoulder belt must always be  
adjusted snugly across the child's  
chest.**

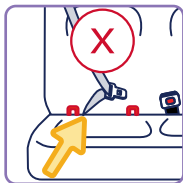
**NEVER place shoulder belt under  
the child's arms or behind their  
back.**

**Do not use this booster seat if the tops of your  
child's ears are above the top of the booster  
seat's headrest.**

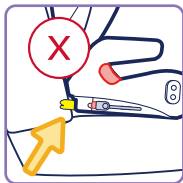




 Do not use the UAS if the seat belt or seat belt buckle is not easily accessible with the booster seat secured to the anchors.



Do not use the UAS if the seat belt or seat belt buckle is between the UAS anchors.



Do not use the UAS if the UAS anchor bars are above the seat bight.





## Backed Booster Seat Child Fit



### Head Position

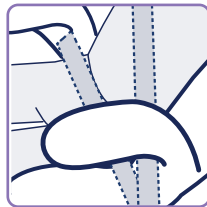
The tops of your child's ears should never be above the top of the booster seat's headrest.

Adjust headrest if needed, see page 7.



### Shoulder Belt Position

The shoulder belt should lay snugly across the center of your child's shoulder and across their chest; **not on their face or neck.**



### Lap Belt Position

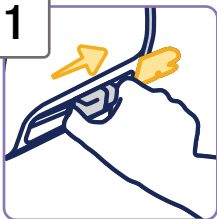
The lap belt should lay snugly across your child's hips; **not on their stomach.**



You **MUST** remove the backless belt-positioning clip strap in order to install the backrest. See page 25.

To install the backrest, see page 5.  
Isofix Steps 1, 3, and 4 are optional.

1



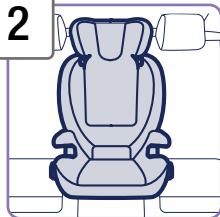
## Extend Isofix UAS Connectors (optional)

Press the button in and slide the Isofix UAS connector out of the shell.

Repeat for the other side.



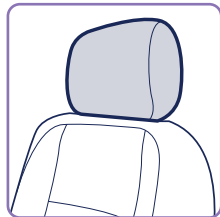
2



## Place Booster Seat Forward Facing in Vehicle

The vehicle seat back must be upright.

The back of the booster seat should be flat against the vehicle seat back.



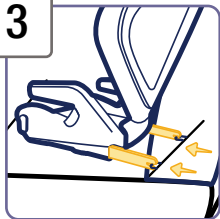
**NOTE: If your vehicle seat has a headrest that interferes with achieving a flush car seat fit, check**

**your vehicle owner's manual to see if it can be removed, adjusted, or if there are other possible seating locations.**

*continued on next page*



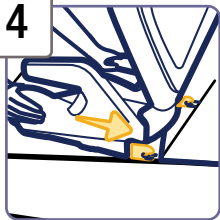
3



**Align Isofix UAS Connectors with Vehicle's Anchor Bars (optional)**

Attach the connectors to the anchor bars. You may need to push down on the seat to align.

4



**Push the Booster Seat Back Against Vehicle Seat (optional)**

Make sure the seat is connected to the anchor bars.

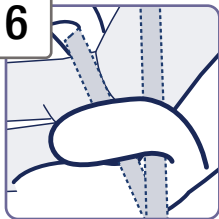
5



**Have Child Sit in Booster Seat**



6



### Position Lap Belt on Child

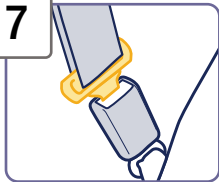
Route the lap portion of the lap/shoulder belt under both armrests.

The shoulder belt **MUST GO UNDER** the armrest

on the vehicle buckle side.

The lap belt should lay snugly across your child's hips; **not on their stomach.**

7



### Buckle Vehicle Belt

Pull up on the lap belt to tighten.

8

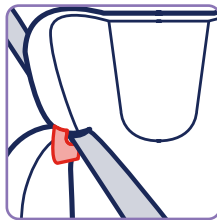


### Position Shoulder Belt on Child

Pull up on the shoulder belt to tighten.

The shoulder belt should lay snugly across the center of

your child's shoulder and across their chest; **not on their face or neck.**



**Only** use the shoulder belt-positioning guide in the headrest **if necessary** to help position the shoulder belt correctly on your child.

*continued on next page*



## Finished!

Check periodically to make sure your child has not moved out of position and loosened the shoulder belt.



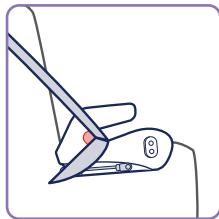
## To Remove Isofix UAS Connector From Vehicle Anchor

Press the button in and slide the Isofix UAS connector back into the shell.

**18-45 kg (40-100 lb) and 110-145 cm (43-57 in.)**



**Isofix UAS +  
Lap/Shoulder Belt**



**Keep booster seat  
secured to the  
vehicle with the  
Isofix UAS or  
vehicle belt even  
when unoccupied.**



**Do not use this booster seat if the tops of your child's ears are above the top of the vehicle seat's headrest.**



**Use only the vehicle's lap and shoulder belt system when restraining the child in this booster seat.**

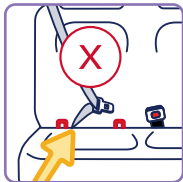
**Do not use only the lap belt when using this booster seat.**

**The shoulder belt must always be adjusted snugly across the child's chest.**

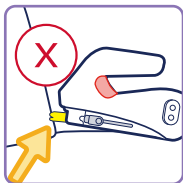
**NEVER place shoulder belt under the child's arms or behind their back.**



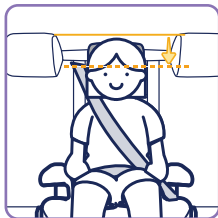
Do not use the UAS if the seat belt or seat belt buckle is not easily accessible with the booster seat secured to the anchors.



Do not use the UAS if the seat belt or seat belt buckle is between the UAS anchors.



Do not use the UAS if the UAS anchor bars are above the seat height.



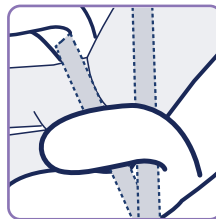
## Head Position

The tops of your child's ears should never be above the top of the vehicle seat's headrest.



## Shoulder Belt Position

The shoulder belt should lay snugly across the center of your child's shoulder and across their chest; **not on their face or neck.**



## Lap Belt Position

The lap belt should lay snugly across your child's hips; **not on their stomach.**

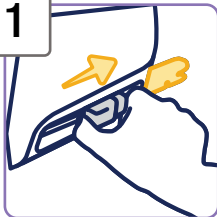




## Backless Isofix UAS & Lap/Shoulder Belt Use

To remove the backrest, see page 6.  
Isofix Steps 1, 3, and 4 are optional.

1



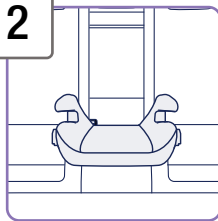
### Extend Isofix UAS Connectors (optional)

Press the button in and slide the Isofix UAS connector out of the shell.

Repeat for the other side.



2

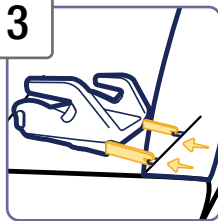


### Place Booster Seat Forward Facing in Vehicle

The vehicle seat back must be upright.

The back of the booster seat should be flat against the vehicle seat back.

3

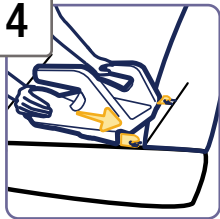


### Align Isofix UAS Connectors with Vehicle's Anchor Bars (optional)

Attach the connectors to the anchor bars. You may need to push down on the seat to align.



4



### Push the Booster Seat Back Against Vehicle Seat (optional)

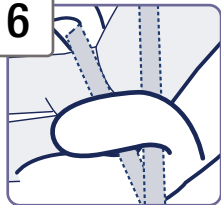
Make sure the seat is connected to the anchor bars.

5



### Have Child Sit in Booster Seat

6



### Position Lap Belt on Child

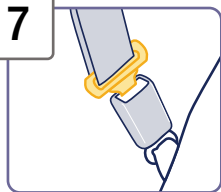
Route the lap portion of the lap/shoulder belt under both armrests.

The shoulder belt **MUST GO UNDER** the armrest

on the vehicle buckle side.

The lap belt should lay snugly across your child's hips; **not on their stomach.**

7



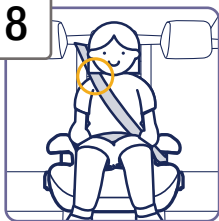
### Buckle Vehicle Belt

Pull up on the lap belt to tighten.

*continued on next page*



8



### Position Shoulder Belt on Child

Pull up on the shoulder belt to tighten.

The shoulder belt should lay snugly across the center of your child's shoulder and across their chest; **not on their face or neck.**



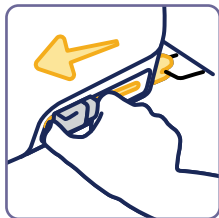
**Only** use the belt-positioning clip **if necessary** to help position the shoulder belt correctly on your child.

To install the backless belt-positioning clip and for proper positioning, see pages 23-24.



### Finished!

Check periodically to make sure your child has not moved out of position and loosened the shoulder belt.

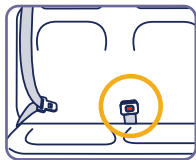


### To Remove Isofix UAS Connector From Vehicle Anchor

Press the button in and slide the Isofix UAS connector back into the shell.

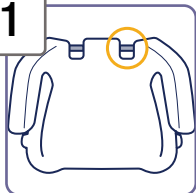
## Installing Backless Booster Belt-Positioning Clip

23



When using the belt-positioning clip, it **must be** installed on the side of the booster seat that is closest to the vehicle seat buckle.

1



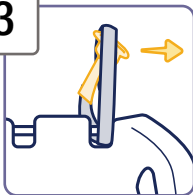
Locate Bar at Back of Booster Seat

2



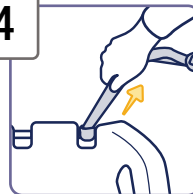
Route Belt-Positioning Clip Strap As Shown

3



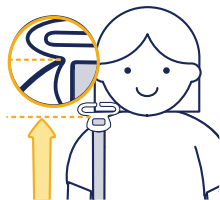
Pull Clip Through Loop at End of Strap

4



Pull to Tighten Strap on Bar

## Positioning Belt-Positioning Clip



1. Have your child sit in the booster seat.
2. Pull the belt-positioning clip straight up to the top of your child's shoulder.
3. The top of your child's shoulder must be even with the bottom of the slot of the belt positioning clip as shown.

Check the length of the belt-positioning clip strap often as your child grows.

Adjust strap as needed. See next page.

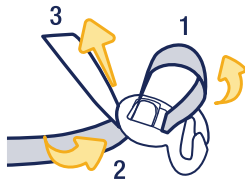
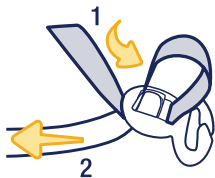
The backless belt-positioning clip **must be removed** before installing the backrest for backed booster seat use. See next page.

## Adjusting Length of Belt-Positioning Clip Strap

### To Lengthen

Push the free end of the strap **(1)** into the clip.

Pull on the opposite end of the strap **(2)** to remove slack.



### To Shorten

From the top of the clip, make a loop in the strap **(1)**.

Push the strap into the clip **(2)**.

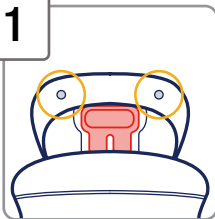
Pull on the free end of the strap **(3)** to remove the loop.

## Removing Belt-Positioning Clip Strap

1. Loosen Strap at Bar
2. Pull Clip Through Loop at End of Strap
3. Remove Strap from Seat

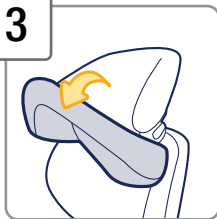
## Removing Seat Pad Set for Cleaning

1



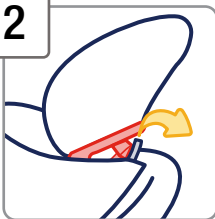
Locate Headrest Pad Fasteners on Back of Headrest & Undo Them

3



Gently Pull Headrest Pad off Headrest

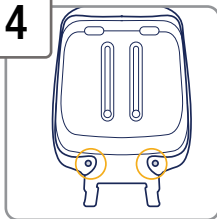
2



Locate Elastic Straps on Headrest Belt-Positioning Guide

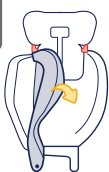
Release them from each belt-positioning guide.

4



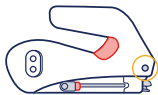
Locate Backrest Pad Fasteners on Back of Backrest & Undo Them

5



**Gently Pull Backrest Pad Off Backrest**

6



**From Back of Seat, Undo Fasteners & Pull Seat Pad Off of Armrests & Seat**



**Do not use booster seat without the seat pad. Failure to do this can result in serious injury or death.**

## **Cleaning and Installing Seat Pad Set**

Machine wash separately with cold water on a gentle cycle. Do not use bleach. Tumble dry separately for 10-12 minutes on low heat. Remove immediately.

1. From Front of Seat, Pull Seat Pad Onto Seat & Over Armrests
2. Gently Fit Backrest Pad Onto Backrest & Attach Backrest Pad Fasteners to Back of Backrest
3. Gently Fit Headrest Pad Onto Headrest
  - a. Fit the elastic straps onto the headrest belt-positioning guides.
  - b. Attach the headrest pad fasteners to the back of the headrest.



## Replacement & Expiration of Car Seat

### Do not risk your child's safety.

To keep your child as safe as possible, Dorel Juvenile Group strongly recommends replacing the car seat even after a minor crash; even if it was not occupied at the time.

### Replacement After a Minor Crash

The National Highway Traffic Safety Administration states that for a crash to be considered minor **ALL of the following must be true:**

- Vehicle able to drive away from the crash site; **AND**
- Vehicle door nearest the car seat was not damaged; **AND**
- No passengers were injured; **AND**
- Airbags did not deploy; **AND**
- There is no visible damage to the car seat.

If the crash your car seat was involved in meets **ALL** the criteria, you may not need to replace the car seat.

If one or more of these criteria are not true or if you are uncertain of any of your answers, replace the car seat immediately.

### Replacement After a Moderate to Severe Crash

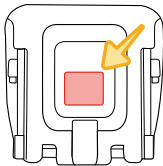
You **must** replace this car seat if it has been in a moderate to severe car crash.

This car seat is intended to protect a child in a single crash. During a crash, the car seat and all of its parts absorb crash energy which can deform or weaken it. Damage is not always visible. A damaged car seat must be replaced immediately.

### Expiration

On the bottom of the child restraint there is a date of manufacture label as shown.

Do not use this child restraint more than 10 years after the date of manufacture.





This restraint is not certified for aircraft use because aircraft seats do not have shoulder belts.

### Transport Canada Regulations

Transport Canada Road Safety Directorate regulates children's restraint systems under the Motor Vehicle Restraint Systems Safety Regulations (RSSR).

The regulations require the manufacturer and/or importer to certify the restraint to the applicable safety standards and place specified warnings and information on the labels fastened to each restraint and in this instruction manual.



### Booster Seat Use

**Never take your child out of the booster seat while the vehicle is moving.**

**Never leave child unattended. Placing your child in a hot booster seat may result in burns.**

**Do not use a booster seat with damaged or missing parts.**

**Do not substitute parts or try to modify the booster seat in any way.**

**Do not use any booster seat accessory except those approved by Dorel Juvenile Group.**

**Never allow any child to play with this booster seat; it is not a toy.**

**Do not remove or cover up any of the warning labels or other labels on the booster seat.**

**This booster seat has been certified for use in passenger vehicles. Do not use in a boat, on a motorcycle or in a cargo van or bus where there are no seat belts.**

**Read all instructions for additional warnings.**



### Installation in Vehicle

**Check the vehicle belt before each use. Use only if the belt can be tightened properly and securely. Even when unoccupied, this booster**

*continued on next page*

seat must be firmly secured to the vehicle by the Isofix UAS or with the vehicle seat belt. In a crash or sudden stop, an unsecured booster seat could injure occupants.

### **Vehicle Seating Position**

Check the vehicle owner's manual for more information about air bag/child restraint use.



Use the booster seat only on vehicle seats that face forward. Do not use on seats that face the sides or rear of the vehicle.



For vehicles without a back seat, refer to your vehicle owner's manual.



Children are safer when properly restrained in rear seating positions than in the front seating positions.

According to accident statistics, children in rear seating positions are statistically safer, whether

you have air bags, advanced air bags, or no air bags at all.

**If you are not sure where to place the car seat in your vehicle:**

- Consult your vehicle owner's manual; **OR**
- Contact Dorel Juvenile Group Consumer Care Department; **OR**
- Visit your local Child Passenger Inspection Station.

**To avoid your child being seriously burned, take the following precautions:**

- Park in the shade or where sun does not directly hit the car seat.
- Cover the car seat with a sheet or blanket when not in use.
- Check for hot seat and buckles before placing child in car seat.

To help protect your vehicle seat's upholstery from damage, use a single layer towel underneath and behind car seat.

Although child restraints are tested, evaluated, and certified by the manufacturer and tested by Transport Canada, it is possible that a safety-related problem may be found. If there is ever a safety issue with your child restraint, we use registration information to reach owners.

**Online:** [www.djgusa.com/registration/carseat/can](http://www.djgusa.com/registration/carseat/can)

**Telephone:** 1-800-951-4113

**Mail:** Send your name, address and your child restraint's model number, manufacture date, line code, and date of purchase to:


## Dorel Juvenile Canada

2233 Argentia Road, Suite 110  
Mississauga, ON L5N 2X7

Please do not send in your registration card if you have registered your child restraint online. For information on safety-related problems, you can also call Transport Canada's Road Safety Dept. at: 1-800-333-0371.

*Tear Off and Mail This Part or Register Online Détachez et postez cette partie ou enregistrez en ligne* 4359-4117E

**Consumer:** Just fill in your name, address and email. Please print.  
**Client:** Simplement inscrire votre nom, adresse et courriel. S.V.P. imprimez.

Your Name/Votre nom: 

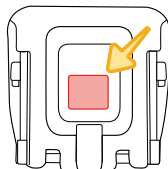
Your Street Address/Votre adresse:

City/Ville: Province Postal Code/Code Postal:

Email Address (optional)/Courriel (optionnel):

AB123CDE	Maxi-Cosi Car Seat	2015/05/16
Date of Purchase/Date d'achat:	L#11 B265035	

**Example of model number, line code, and manufacture date.**



If you don't have the card or if your address changes, you will find the model number, manufacture date, and line code on the label located on bottom of seat.

Dorel Juvenile Group, Inc. (DJG) warrants this product to the original retail purchaser as follows:

This product is warranted against defective materials or workmanship for one year from the date of original purchase. **An original receipt is required to validate your warranty.** DJG will, at its option, provide replacement parts or replace this product. DJG reserves the right to substitute if the part or model has been discontinued.

To make a claim under this warranty, please contact our Consumer Care Department by phone: 1-800-951-4113 or text: 1-812-652-2525. Our hours of operation are from 8:00 a.m. to 6:00 p.m. EST Monday through Thursday and from 8:00 a.m. to 4:30 p.m. on Friday.

**Proof of purchase is required and shipping charges are the responsibility of the consumer.**

**Warranty Limitations:** This warranty does not include damages which arise from misuse or abuse of this product.

**Limitation of Damages:** The warranty and remedies as set forth are exclusive and in lieu of all others, oral or written, expressed or implied. In no event will DJG or the dealer selling this product be liable to you for any damages, including incidental or consequential damages, arising out of the use or inability to use this product.

Please note: Our product warranty only applies when purchased from an authorized Maxi-Cosi retailer. The origin of products not purchased through these authorized retailers is unknown and could be counterfeit. We cannot support products from an unknown origin as we cannot verify the handling or condition of such merchandise. We maintain a strong network of authorized retailers to ensure

you are purchasing safe and complete products. Fulfillment by a third party does not guarantee you are purchasing from one of these authorized retailers. Pricing which is inconsistent with the majority of retailers is a strong indication that the retailer is not authorized, as we have a consistent price offering across all authorized retailers. If you are unsure of the authorization status of a retailer you are considering purchasing from, or have purchased from, you can check [www.maxicosi.com/us-en/shops.aspx](http://www.maxicosi.com/us-en/shops.aspx); or call our Consumer Care Department at 1-800-951-4113; or text us at 1-812-652-2525.

## Replacement Parts List

Seat Pad Set

Backless Booster Belt-Positioning Clip

Cup Holder

Instructions

**If requested color is not available, similar color will be substituted.  
Applicable tax and shipping & handling will also be added.**

**For parts availability and questions,**

**Call:** 1-800-951-4113

**Text:** 1-812-652-2525

**Chat:** [www.maxicosi.com](http://www.maxicosi.com)

**If you already know which parts you need,** you may complete your order with a credit card by calling us at 1-800-951-4113.

**We accept Visa or MasterCard.**

**Hours of Operation:**

M-TH: 8:00 AM - 6:00 PM EST

FRI: 8:00 AM - 4:30 PM EST

Thank you for choosing this child restraint. The DJG family is committed to creating child restraints with the most comfort and convenience available today.

Remember, parents are a child's first teachers and examples. If you always buckle your seat belt, your child will think it is the natural thing to do. Make it a firm rule that the vehicle does not go until everyone is buckled up. Make no exceptions.

No one can predict if use of a child restraint will prevent injury or death in a particular crash. However, when combined with careful driving, proper use of a child restraint can lower a child's risk of injury or death in most crashes.

If you still have questions or have any concerns with this child restraint, please contact our Consumer Care Department:

**Call:** 1-800-951-4113

**Text:** 1-812-652-2525

**Website:** [www.maxicosi.com](http://www.maxicosi.com)

**Hours of Operation:**

M-TH from 8:00 AM to 6:00 PM EST  
FRI from 8:00 AM to 4:30 PM EST