

### Imaginative play at home or on the go!

#### CARE AND SAFETY

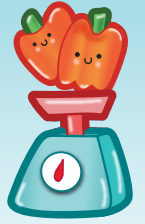
- Wash hands before use.
- Children should be supervised during play - not suitable for children under 3.
- Dough is not edible. Do not eat or place in eyes, nose or mouth.
- Wash the accessories as needed with warm soapy water.

#### IMPORTANT:

- Put dough in a sealed bag after play. Squeeze air out and zip up the bag. When exposed to air, the dough will eventually dry out and harden.
- Keep the sensory case closed when not in use.

**DO NOT EAT. CONTAINS GLUTEN.**

**WARNING:**  
CHOKING HAZARD - Small parts.  
Not for Children under 3 years.



#### Assemble

Decorate the case with stickers before playing with the dough.

#### Dough

- What does the dough smell like to you?
- Roll the dough into a ball. Push it into the mold to make a smiling sunshine.
- Use your sensory case as a play surface. Flatten the dough, then use the cookie cutters.
- Shape your dough into fruits and vegetables.
- Mix two colors of dough together. What new color did you make?



Try using the closed tube as a dough roller!



### Let's explore your sensory set!



#### Tweezers

- Pinch and release the tweezers to pick up fruits and vegetables. Drop them into your basket.



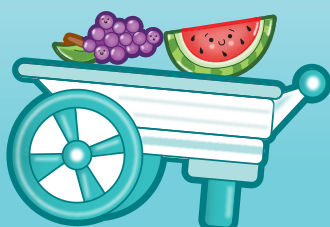
#### Sound Tube

- Stretch and squeeze to create different sounds.
- Try talking through the tube. How does your voice sound?



#### Silly Suction Cup Friend

- Stick the suction cup to the case, pull it up to hear a fun "pop" (you may need to lightly dampen the suction area to make it stick).



#### More fun things to try!

- Count and sort the items by color.
- Make up a story about a trip to the grocery store.
- What would you sell at your farmer's market?



#### Loved this kit?

Look for more Sensory Activities at [www.creativityforkids.com](http://www.creativityforkids.com)