

Installation Instructions

Remote ON/OFF Button

Record your model number:

Noter le numéro de modèle:

Anote su número de modelo:

记录您的型号:

บันทึกหมายเลขรุ่นของคุณ:

모델 번호 기록:

Ghi lại số model của bạn: _____

Français, page 11

Español, página 20

简体中文, 页码 29

ไทย, หน้า 38

한국어, 페이지 47

Tiếng Việt, trang 56

KOHLER®

Customer Support

Thank you for choosing KOHLER.

Need help? Contact our Customer Care Center.

North America

- USA/Canada: 1-800-4KOHLER (1-800-456-4537)
- Mexico: 001-800-456-4537
- **For service parts**, visit [kohler.com/serviceparts](https://www.kohler.com/serviceparts).
- **For care and cleaning**, visit [kohler.com/clean](https://www.kohler.com/clean).
- **Patents:** [kohlercompany.com/patents](https://www.kohlercompany.com/patents)

United Kingdom

- Visit [kohler.co.uk/support/contact](https://www.kohler.co.uk/support/contact).
- +(44) 0800 001 4466

India

- E-mail: indiacustomercare@kohler.com
- 1800-103-2244

Thailand

- E-mail: callcenterthailand@kohler.com
- +(66)-2700-9299

Australia, New Zealand

- Australia: 1800 KOHLER (1800-564-537)
- New Zealand: 0800-564-537

Mainland China

- +(86) 800-820-2628
- +(86) 400-820-2628

Hong Kong (China), Macau (China), Taiwan (China)

- +(852) 3125-7728

Brunei, Guam, Indonesia, Japan, Malaysia, Mongolia, Philippines, Singapore, South Korea, Vietnam

- +(86) 21-2606-2572

Warranty

North America

This product is covered under the **KOHLER® Electronic Faucets, Valves, and Controls Five-Year Limited Warranty**, found at kohler.com/warranty. For a hardcopy of warranty terms, contact the Customer Care Center.

United Kingdom

This product is covered under the **KOHLER® Digital Taps, Valves, and Controls Five-Year Guarantee**.

India

This product is covered under the **KOHLER® India Faucet, Sanitaryware and Bathing Products Limited Warranty**, found at kohler.co.in/warranty.

China

This product is covered under the **Three-Year Limited Warranty for KOHLER® Digital Shower Valves and Controls**, found in the packed Compliance Certification.

IMPORTANT INSTRUCTIONS


This product is designed to be safe when installed, used, and maintained in accordance with the provided instructions and recommendations. Follow all warnings, cautions and instructions contained in this guide, and on, or inside the product.




WARNING: Risk of personal injury. This product is not intended for use by persons (including children) with different or reduced physical, sensory, or mental abilities, or who lack experience or knowledge, unless they are under the supervision of or receive training for the use of the product by a person responsible for their safety. Do not allow children to play with this product.



WARNING: Risk of personal injury. Never remotely operate or alter this product if the system is in use by another person.

 **CAUTION: Risk of scalding.** Always check that the water temperature is safe before bathing or showering.

 **CAUTION: Risk of injury or property damage.** Do not operate the product if water is leaking from inside the valve module.

 **CAUTION: Risk of product damage.** Do not operate the product if it is thought to have been exposed to freezing conditions.

NOTE: Install the product on a flat and even wall surface, avoiding grout lines, if possible.

NOTE: The remote button will attempt to pair to the first digital valve it discovers. Before pairing, turn OFF any other digital valves in the area.

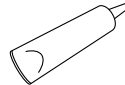
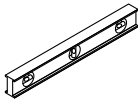
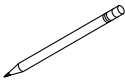
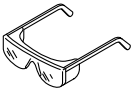
Follow all local plumbing and building codes.

This product operates only with the following valve systems: K-28209, K-28210, K-28211, or K-28212.

Specifications

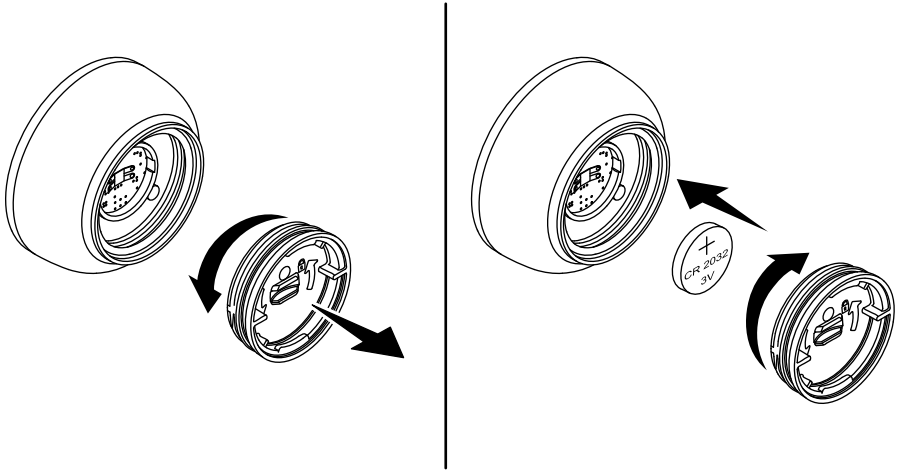
| | |
|-----------------------------|--|
| Ingress Protection | IP X5 - suitable for a wet environment |
| Maximum Ambient Temperature | 104°F (40°C) |

Tools and Materials



1/4" (6 mm) Silicone Sealant

1. Pair the Button



NOTE: Once paired, the remote ON/OFF button will operate the digital valve.

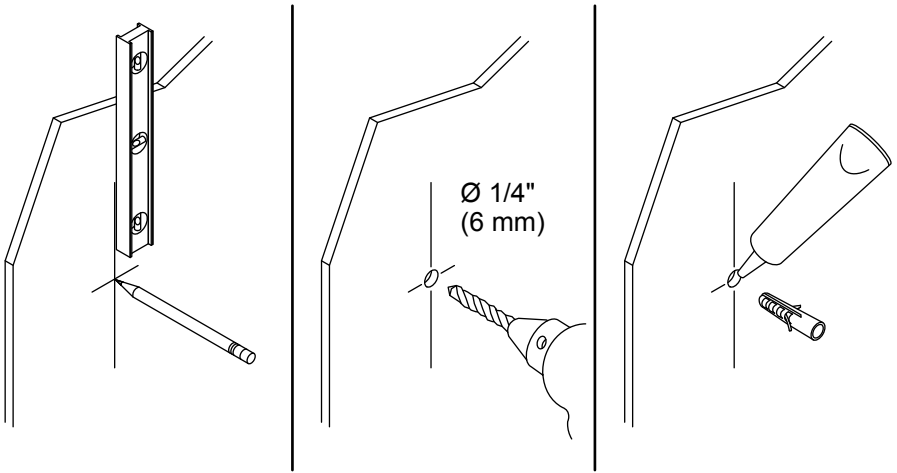
NOTE: The remote button will attempt to pair to the first digital valve it discovers. Before pairing, turn OFF any other digital valves in the area.

- Unthread the back cover from the button.

NOTE: The positive symbol on the battery must face out.

- Insert the battery with the positive symbol facing out.
- Reinstall the cover onto the back of the button.
- Turn OFF the electrical supply to the digital valve for 10 seconds, then turn ON again.
- Within 30 seconds of powering ON the valve, press and hold the remote button for 6 seconds. A light on the back of the button will flash yellow. Pairing is successful when the light pulses green.
- If the light does not turn green, move the button closer to the valve and repeat the pairing steps.

2. Prepare the Wall

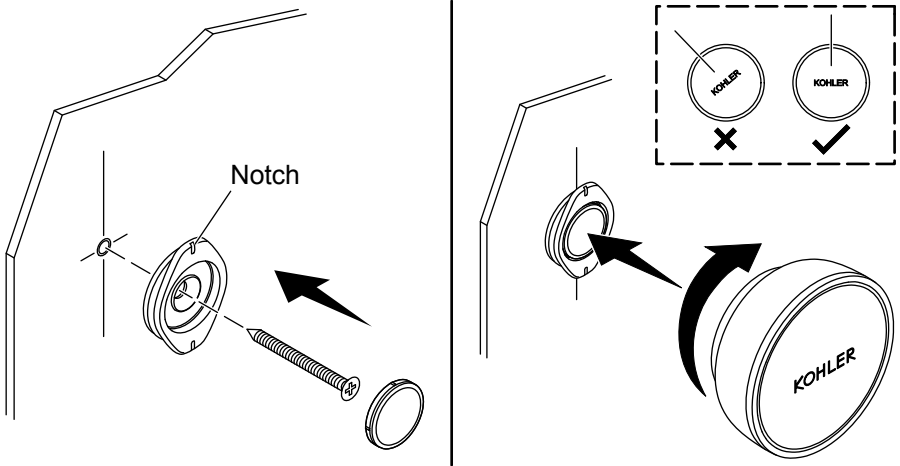


NOTE: Certain building materials can affect wireless connection to the digital valve. Test the remote button at the desired location before installation.

NOTE: Install the product on a flat and even wall surface, avoiding grout lines, if possible.

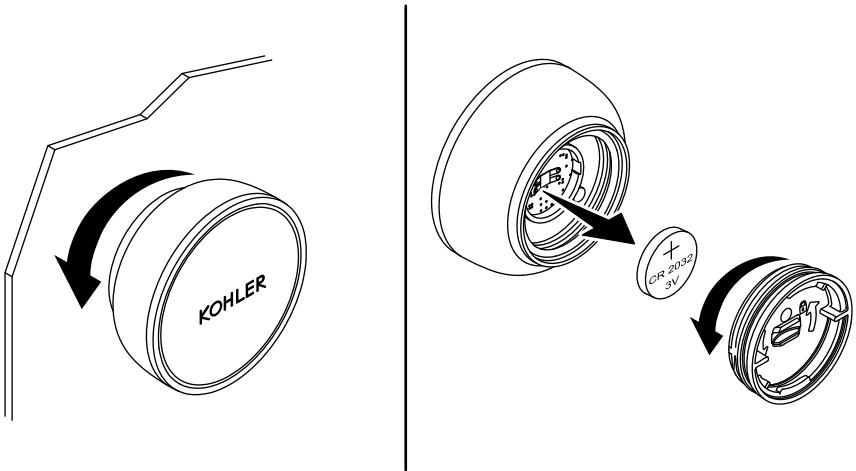
- Once the desired location has been tested, mark the center position. Recommended height from the floor is 58" (1473 mm).
- Using a pencil and level, draw a vertical line on the center mark.
- Drill a 1/4" (6 mm) hole at the center mark.
- Apply silicone sealant around the hole.
- Install the wall anchor.

3. Install the Button



- Position the mounting plate with the two notches aligned with the vertical line on the wall.
- Secure the mounting plate using the provided screw. **Do not overtighten.**
- Press the cap into the mounting plate.
- Position the remote button onto the mounting plate.
- Rotate the button clockwise until the icon is aligned with the vertical line on the wall.
- Erase the vertical pencil line once the button is properly installed.

Replacing the Battery



⚠ CAUTION: Risk of product damage. The replacement battery must match the existing CR2032 3V lithium battery type.

Low Battery: A red light will flash before normal operational light sequences.

Depleted Battery: A red light will flash three times and the remote button will not function.

- Rotate the remote button counterclockwise to disengage from the mounting plate.
- Unthread the back cover from the button.

NOTE: The positive symbol on the battery must face out.

- Replace the battery with a new lithium battery, positioned with the positive symbol facing out.
- Reinstall the cover onto the back of the button.
- Position the remote button onto the mounting plate.
- Rotate the button clockwise until the icon is properly aligned.

Compliance

Contains FCC ID: SH6MDBT42Q

This device complies with Part 15 of the FCC Rules. Operation is subject to the following two conditions: (1) this device may not cause harmful interference, and (2) this device must accept any interference received, including interference that may cause undesired operation.

Changes or modifications not expressly approved by the party responsible for compliance could void the user's authority to operate the equipment.

This equipment has been tested and found to comply with the limits for a Class B digital device, pursuant to Part 15 of the FCC Rules. These limits are designed to provide reasonable protection against harmful interference in a residential installation. This equipment generates, uses, and can radiate radio frequency energy and, if not installed and used in accordance with the instructions, may cause harmful interference to radio communications. However, there is no guarantee that interference will not occur in a particular installation. If this equipment does cause harmful interference to radio or television reception, which can be determined by turning the equipment off and on, the user is encouraged to try to correct the interference by one of the following measures:

- Reorient or relocate the receiving antenna.
- Increase the separation between the equipment and receiver.
- Connect the equipment into an outlet on a circuit different from that to which the receiver is connected.
- Consult the dealer or an experienced radio/TV technician for help.

RF Exposure Warning

This transmitter with its antenna complies with FCC's RF exposure limits for general population/uncontrolled exposure. This device must not be co-located or operated in conjunction with any other antenna or transmitter. This device should be operated with a minimum distance of 7-7/8" (200 mm) between the radiator and your body.

Contains IC: 8017A-MDBT42Q

This device contains license-exempt transmitter(s)/receiver(s) that comply with Innovation, Science and Economic Development Canada's license-exempt RSS(s). Operation is subject to the following two conditions: (1) this device may not cause interference, and (2) this device must accept any interference, including interference that may cause undesired operation of the device.

This transmitter with its antenna complies with Industry Canada RF Exposure Limits for General Population/Uncontrolled Exposure.

This Class B digital apparatus complies with Canadian ICES-003.

This product uses BLUETOOTH® Low Energy, operating in the Frequency band 2402MHz-2480MHz with a maximum power of less than +4dBm.

The BLUETOOTH® word mark and logos are registered trademarks owned by Bluetooth SIG, Inc. and any use of such marks by Kohler Co. is under license. Other trademarks and trade names are those of their respective owners.

This device contains SRRC approved Radio module CMIIT ID 2016DJ4571.



Kohler Co. hereby declares that this product is in compliance with the Radio Equipment Directive 2014/53/EU. The full text of the EU declaration of conformity is available in the Digital Control Homeowners Guide found at <http://www.kohler.com>.



Recycling and Disposal



This product and its battery should not be disposed of with your general household waste. When this product or battery has reached the end of its serviceable life, take it to a recognized WEEE (Waste Electrical and Electronic Equipment) collection facility such as your local civic amenity site for recycling. Your local authority or retailer can direct you to the nearest recycling facility.

Kohler Co. hereby declares that this product is in compliance with the China RoHS II Directive (GB/T 26572-2011). The full text of the Hazardous Substance Disclosure Table is available in the Digital Control Homeowners Guide found at <http://www.kohler.com.cn>.