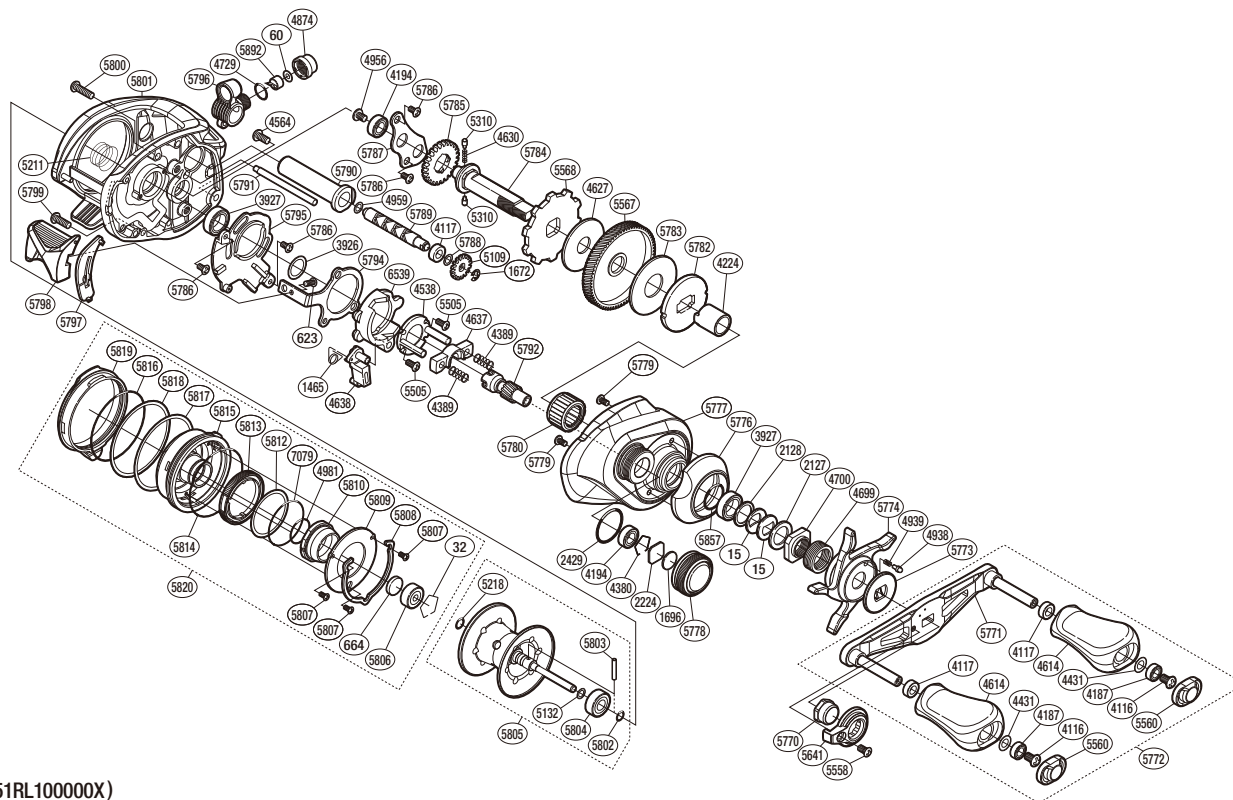


SHIMANO

Bantam

MGL

BTM MGL-R



(51RL10000X)

#	Part No.	Description	#	Part No.	Description	#	Part No.	Description
0015	10D60	Drag Spring Washer	4939	10988	Click Spring	5791	1006J	Level Wind Guide
0032	10GEW	Bearing Retainer	4956	10PVT	Screw	5792	10068	Pinion Gear
0060	10CFW	Spacer	4959	10GFJ	Washer	5794	10067	Clutch Plate
0623	103C0	Screw	4981	10LA8	O Ring	5795	1001J	Clutch Guard
0664	1057S	Spacer B	5109	10FNX	Idle Gear	5796	100QL	Line Guide Pawl Holder Assembly
1465	10N1Z	Clutch Pawl Spring	5132	10GN1	Washer	5797	1000Z	Clutch Bar Guide B
1672	105NC	E Lock	5211	10EZE	Bearing Pressure Spring	5798	10TT2	Clutch Lever Assembly
1696	10896	Cast Control Spacer	5218	10EZ7	O Ring	5799	101GQ	Screw
2127	10J1N	Star Drag Spacer	5310	10HJG	Idle Gear Pin	5800	103LN	Screw
2128	105PW	Bearing Washer	5505	10LVJ	Screw	5801	100Q8	Frame Assembly
2224	1085F	Spool Tension Spacer	5558	10R1Q	Screw	5802	10TNF	O Ring
2429	108WK	O Ring	5560	10FMM	Handle Knob Seal	5803	10MDD0	Spool Clutch Pin
3926	10G8C	Washer	5567	1021F	Drive Gear	5804	1005D	Ball Bearing
3927	10EX8	Ball Bearing	5568	1021K	Anti-Reverse Ratchet	5805	10TB0	Spool Assembly (With Bearing)
4116	103E9	Screw	5641	10SSK	Handle Nut Plate	5806	10S37	Ball Bearing
4117	10PXY	Bushing	5770	1007H	Handle Nut	5807	1026U	Screw
4187	104VX	Ball Bearing	5771	10TB7	Handle Shank Assembly	5808	10TUC	Cam Lever Retainer
4194	105BP	Ball Bearing	5772	10TTN	Handle Assembly	5809	10TUB	Br Dial Retainer Plate
4224	10BN3	Roller Clutch Inner Tube	5773	1007F	Star Drag Click Plate	5810	10TB6	Brake Pipe Gear Assembly
4380	1057X	Retainer	5774	1006Y	Star Drag	5812	1006Q	Washer
4389	104BU	Yoke Spring	5776	1001K	Clutch Button Attachment	5813	1000Y	Br Dial
4431	10G8G	Washer	5777	10DL3	Right Side Plate	5814	108WZ	O Ring
4538	10F42	Clutch Cam Retainer	5778	10060	Cast Control Cap	5815	10TB8	Brake Case Assembly
4564	10LZD	Screw	5779	1055D	Screw	5816	1006P	O Ring
4614	10329	Handle Knob	5780	1005E	Roller Clutch Bearing	5817	10073	Washer
4627	10CHE	Drag Washer	5782	10064	Pressure Plate	5818	10078	Washer
4630	10JDX	Idle Gear Spring	5783	1027W	Drag Washer	5819	10013	Left Side Plate Cam Lever
4637	1046T	Yoke	5784	10059	Drive Shaft	5820	100KB	Left Side Plate Assembly
4638	105ZU	Clutch Pawl	5785	10057	Idle Gear	5857	1027V	O Ring
4699	10A71	Star Drag Spring	5786	10MT4	Screw	5892	10211	Line Guide Pawl
4700	10A0B	Star Drag Nut	5787	1005S	Drive Shaft Retainer	6539	10SX6	Clutch Cam
4729	108WQ	O Ring	5788	10R3Z	Washer	7079	10CG0	O Ring
4874	10FJB	Pawl Cap	5789	10069	Worm Shaft			
4938	10B27	Click Pin	5790	1005Z	Level Wind Guard	4692	10LQ0	B-100 Oil (Accessory)

Please note that the number of adjusting washers may not be the same as shown in the exploded views.
(Adjustment will vary with each individual product.)

(240329)_011