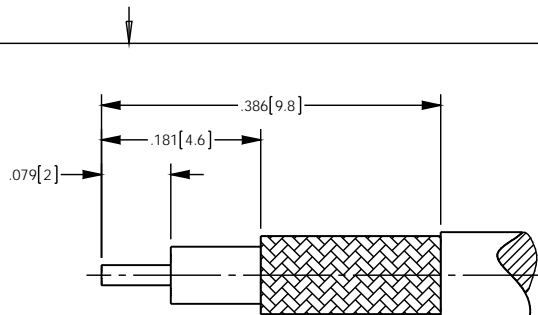


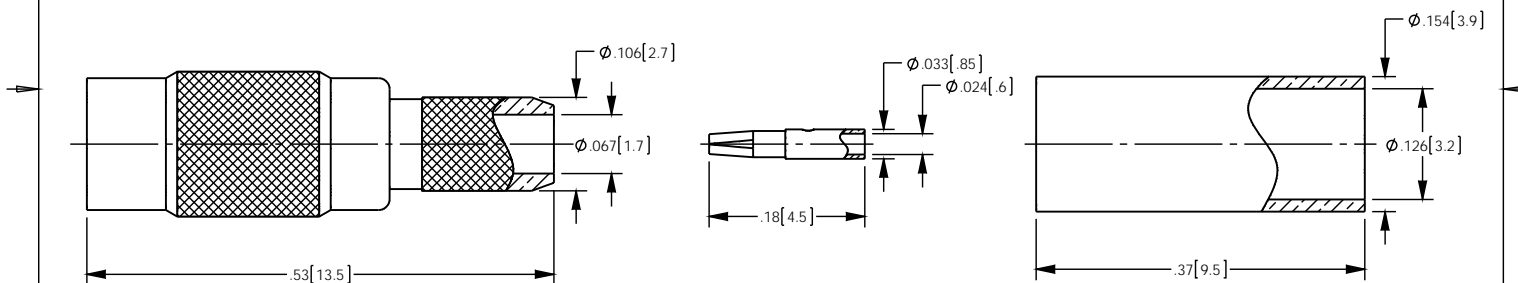
NOTES: UNLESS OTHERWISE SPECIFIED

1. FOR USE WITH RG-174/U, 188A/U, 316/U OR EQUIVALENT
2. MATERIAL SPECIFICATIONS:
 INSULATOR: PTFE, COLOR - NATURAL
 CONTACT: BERYLLIUM COPPER
 ALL OTHER METAL PARTS: BRASS
3. FINISH SPECIFICATIONS:
 CONTACT: .000003 MIN THICK GOLD OVER .000050 MIN THICK NICKEL
 ALL OTHER METAL: THIN GOLD OVER .000050 MIN THICK COPPER
4. ELECTRICAL SPECIFICATIONS:
 IMPEDANCE: 50 OHMS
5. CONTACT AND FERRULE SHIPPED LOOSE.
6. CRIMP FERRULE (.128 HEX) AND SOLDER TO CONTACT.

REV	DESCRIPTION	BY DATE	APPD
A	ER056138	JL 12/16/14	SK



RECOMMENDED CABLE STRIPPING DIM'S



CATALOG P/N: 1320A204M

PER ASME Y14.5M-1994 UNLESS OTHERWISE SPECIFIED, DIMENSIONS ARE IN INCHES (MM) TOLERANCES: DECIMAL: .XX [XX] ± .01 [0.3] XXX [X.XX] ± .005 [0.13] XXXX [X.XXX] ± .000X ANGLES: ± 2° SCALE: 6:1				 WINCHESTER Winchester Electronics Corporation ELECTRONICS 199 Park Road Ext Suite 104 Middlebury, Connecticut 06762					
CUSTOMER SALES DRAWING				THIRD ANGLE 		MMCX CRIMP JACK FOR RG-174/U, 188A/U, 316/U			
DRAWN	DATE	APPROVED	DATE	A	SD1320A204M	SHT	OF	REV	
JL	12/16/2014	SK	12/19/2014						1
APPROVED	DATE	APPROVED	DATE						
MS	12/16/14	XXX	XX/XX/XX						