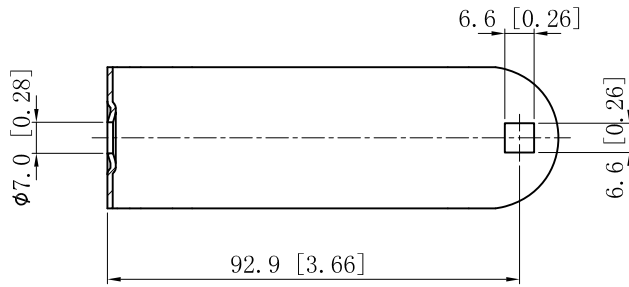
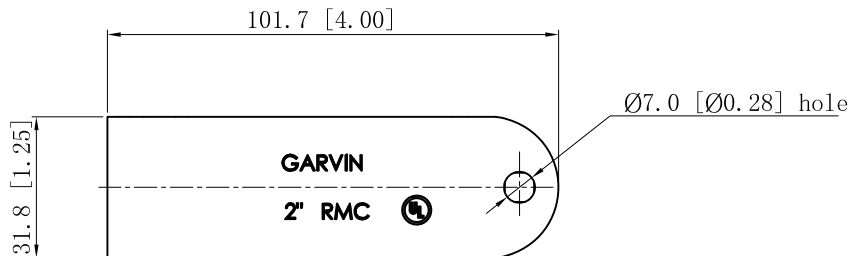
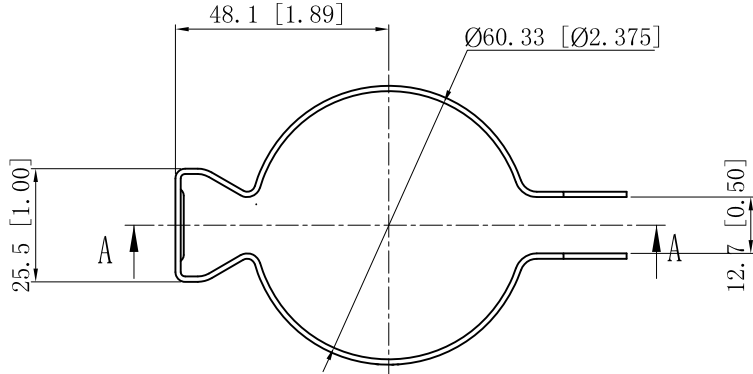
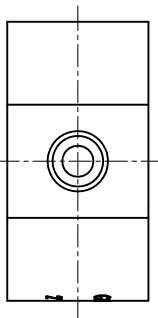
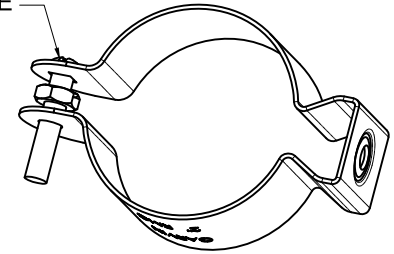


SIDES	BOTTOM
1 PCS #1/4-20×1-1/4 Screws Installed	
1 PCS #1/4-20 Hex Nut Installed	
Material:Steel-0.047"-C.R.S Zinc Plated	



CUTAWAY VIEW A-A

INSTALL FROM THE SQUARE HOLE



This data sheet is for reference only .GARVIN INDUSTRIES reserves the right to make changes to the design without prior notice.

DESCRIPTION
TRADE REFERENCE TERMS

STANDARD PACKING	GARVIN INDUSTRIES		
	TITLE CONDUIT HANGERS		
25 PCS	SIZE	DWG NO.	REV
	A4	CHR-200	C
DATA SHEET			
www.garvinindustries.com			