



# INSTRUCTION MANUAL

BWM-7/R

BWM-7/R-2

## BELGIAN WAFFLE MAKERS

This manual contains important information regarding your Adcraft unit. Please read this manual thoroughly prior to equipment set-up, operation and maintenance. Failure to comply with regular maintenance guidelines outlined in this manual may void the warranty.

## **WARNINGS**

- Do not touch any hot surfaces
- Plug only into a 3-hole grounded electrical outlet of the appropriate voltage
- Do not immerse unit, cord or plug in liquid at any time
- Unplug cord from outlet when not in use and before cleaning
- Do not operate unattended
- Do not use this unit for anything other than intended use
- Do not use outdoors
- Always use on a firm, dry and level surface
- Do not use if unit has a damaged cord or plug, in the event the appliance malfunctions, or has been damaged in any manner
- Keep children and animals away from unit
- Any incorrect installation, alterations, adjustments and/or improper maintenance can lead to property loss and injury. All repairs should be done by authorized professionals only.

## **TO USE**

1. Turn on power switch. Three beeps will sound indicating that the machine has power and the heating process has been initiated.
2. After this the LED display will show a time in minutes and seconds. Before you set the time you must set the heating temperature that you would like to cook your waffles at. In order to do this hold the "SET" button and then press the "START/STOP" button. This will then display the temperature that the unit is currently set to. Use the "+" and "-" buttons in order to change the displayed temperature to the one desired and then press "SET" to finalize this parameter. The unit will then continue heating to this set temperature and will continue to maintain this temperature for the remainder of the cooking process and the whole time the unit's power switch is turned on.
3. In order to begin the time feature press and hold the "START/STOP" button and use the "+" and "-" buttons in order to change the minutes and seconds displayed on the LED display. Once you have set your desired time press the "START/STOP" button once to begin the time countdown. Once the time on the display has reached "00:00" an alarm will sound indicating the timer has ran out of time.

**NOTE:** The timer feature has NO AFFECT on the heating process. It is just a timer for your convenience to help you keep track of your cooking times. The unit will always maintain the set temperature you have input as long the power switch is turned on, regardless if the timer has run out or not.

## MAKING WAFFLES

Turn the unit on and pre-heat for 15 minutes with the waffle grids closed. To make waffles follow these instructions:

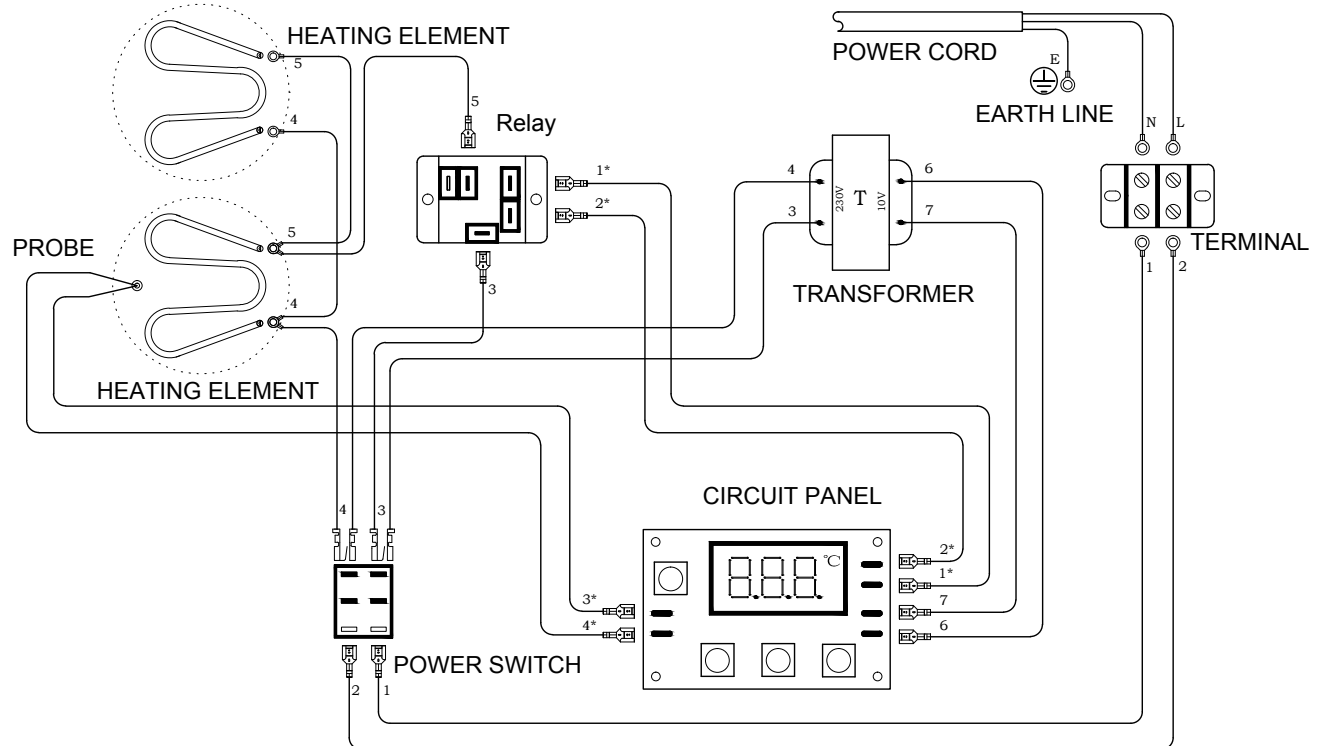
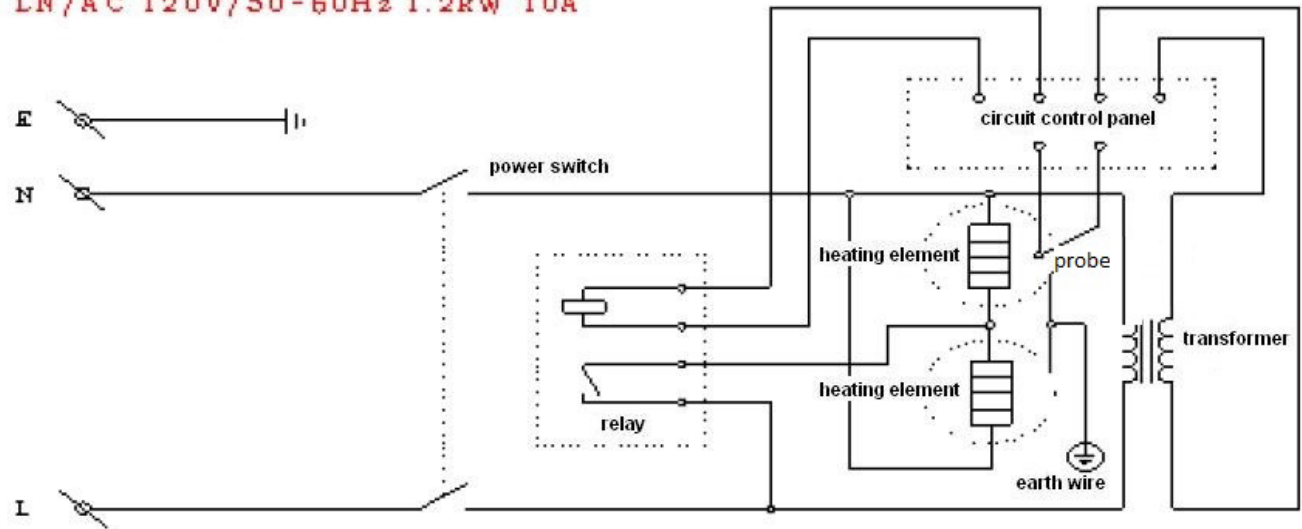
1. Spray or brush on releasing agent.
2. Lift the top lid, pour in the mix and close. Allow waffle batter to sit for 10 seconds.
3. Start timer by pressing the start/stop button.
4. Rotate grids 180°.
5. Cook until the timer beeps and press the start/stop button to stop the timer.
6. Rotate grids 180°.
7. Remove waffle. **Do not use metal utensils on non-stick waffle irons.**
8. To cook more waffles repeat steps 1 through 7.

**CLEANING – NOTE:** To maintain cleanliness and increase service life, this item should be cleaned daily. Do not immerse the unit in water or any other liquid. If liquid enters the electrical compartment it may cause a short circuit or electrical shock

1. Unplug the unit and let cool down.
2. Clean the waffle iron plates with a wet towel only.
3. Do not use a wire scrub brush or metal utensils on the waffle iron plates.

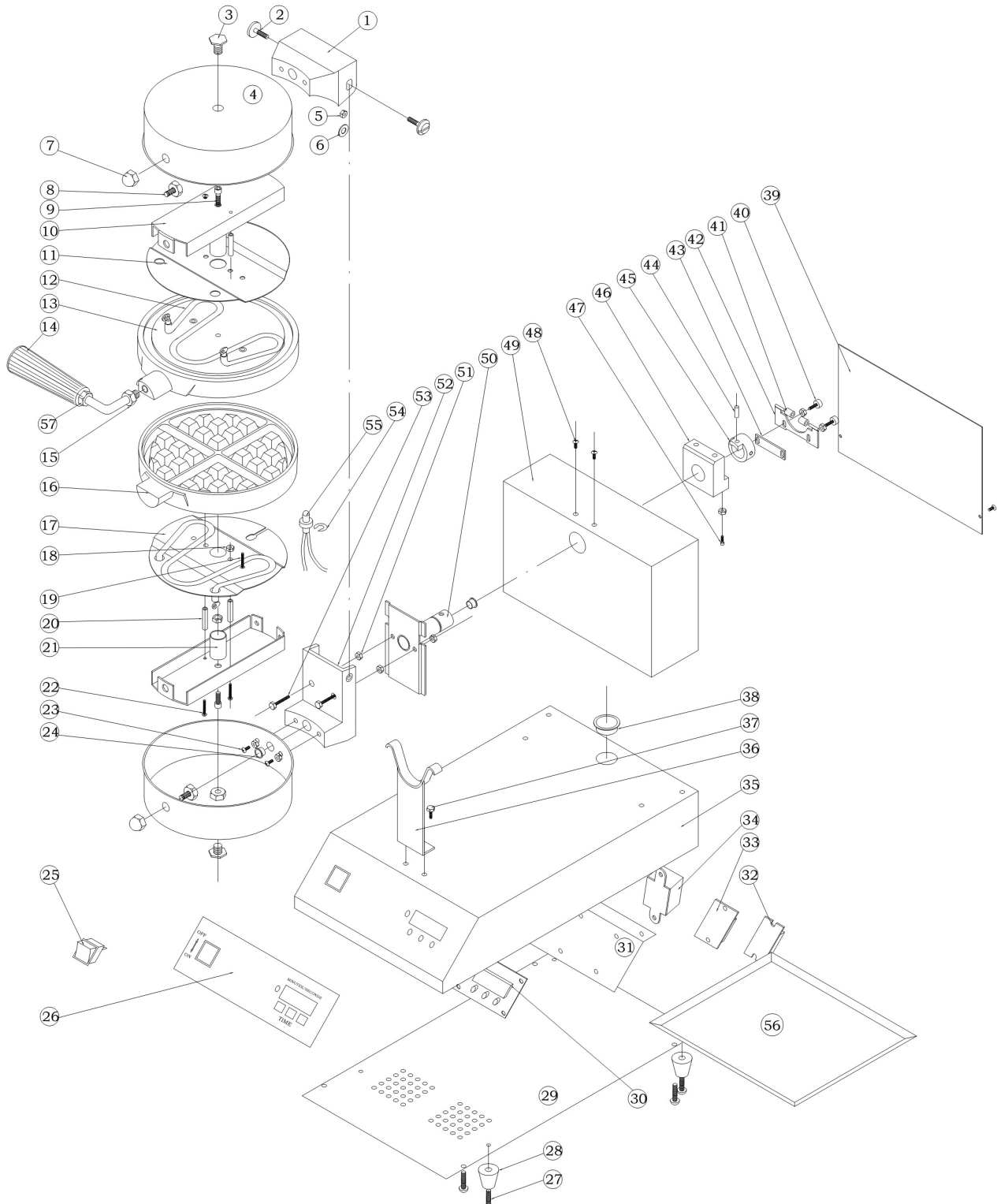
## Wiring Diagram for the Waffle Makers

LN/AC 120V/50-60Hz 1.2kW 10A



LN/AC 115V/50~60Hz 1.2kW/10.5A

## Parts Diagram and Replacement Parts for the Single Waffle Maker



## Replacement Parts for the Single Waffle Maker

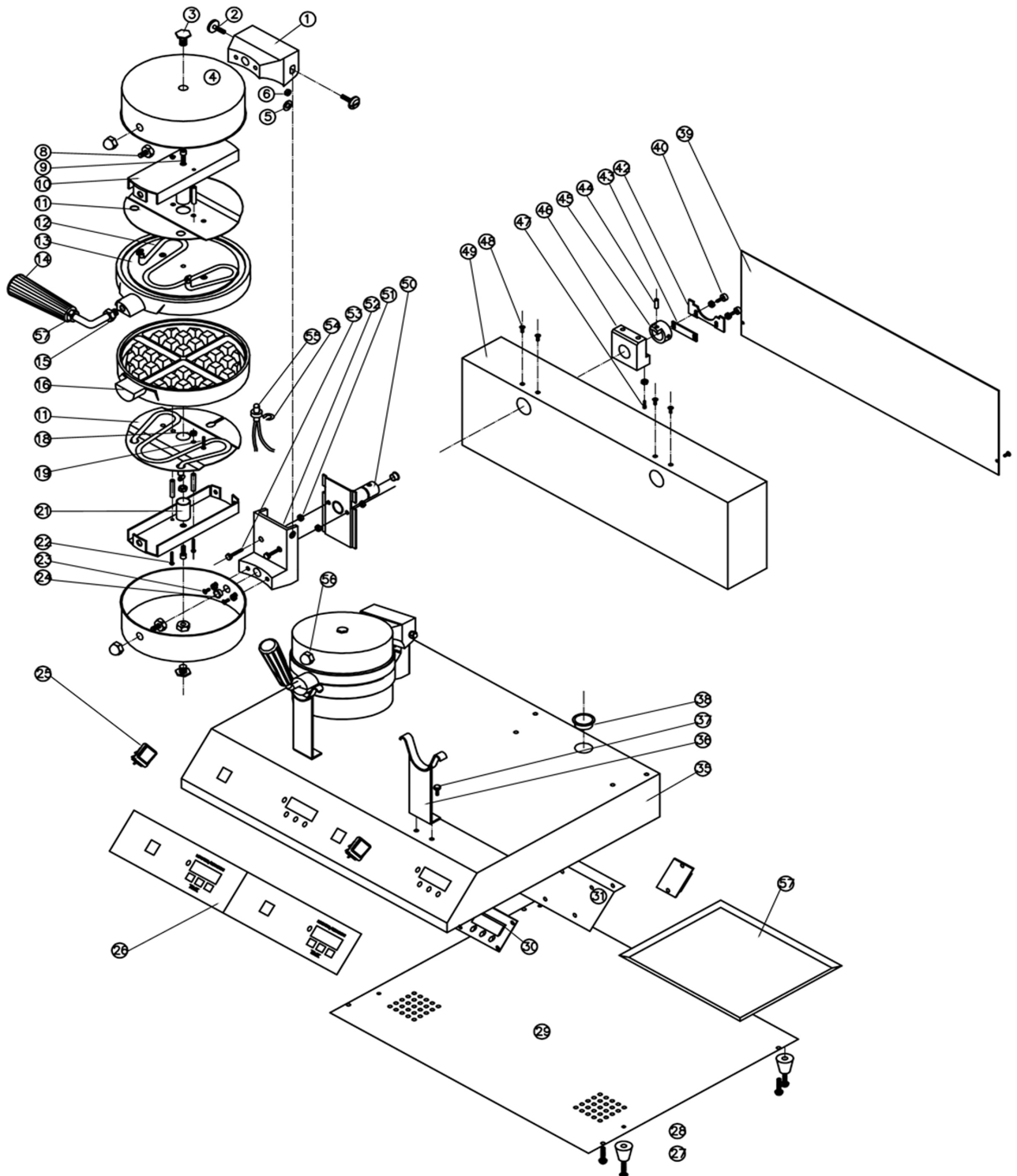
### BWM-7/R - Belgian Waffle Maker 7" Round

Diagram Number	Description	QTY
1	Upper Rotating Arm	1
2	Screw	2
3	Head Screw	2
4	Body	2
5	Washer	2
6	Nut	4
7	Nut	2
8	Hexagonal Screw	2
9	Socket Screw	2
10	Cross Beam	2
11	Presser Bit for Heating Elements	2
12	Upper Pan	1
13	Handle	1
14	Nut	3
15	Lower Pan	1
16	Presser Bit for Heating Elements	1
17	Nut	6
18	Cross Screw	8
19	Spacing Pipe	4
20	Spacing Pipe	2
21	Screw	4
22	Screw	4
23	Cross Head Screw	4
24	Rubber Ring	3
25	Switch	1
26	Facial	1
27	Cross Head Screw	4
28	Foot	4
29	Bottom Board	1
30	Controlling Board	1
31	Electrical Parts Base	1
32	Contactor	1
33	Terminal	1
34	Transformer	1
35	Bottom Board	1
36	Bracket for rotating Arm	1
37	Hexagonal Bolt	4
38	Rubber Ring	1
39	Back Board	1
40	Socket Screw	2
41	Collision Bead	2
42	Bracket for Collision Bead	1
43	Spacing Board	1
44	Spacing Pin	1
45	Angle Spacing Sleeve	1

Diagram Number	Description	QTY
46	Bearing Bracket	1
47	Socket Screw	2
48	Cross Screw	4
49	Back Board	1
50	Rotating Shaft	1
51	Nut	5
52	Lower Rotating Shaft	1
53	Hexagonal Bolt	2
54	Shaft Circlip	1
55	Probe and Heating Wire	1
56	Crumb Tray	1
57	Nut	1

VER1114

## Parts Diagram and Replacement Parts for the Double Waffle Maker



## Replacement Parts for the Double Waffle Maker

### BWM-7/R-2 - Belgian Waffle Maker - Double Round 7"

Diagram No.	Description	Qty
1	Upper rotating arm	2
2	Screw	4
3	Head screw	4
4	Body	4
5	Washer	4
6	Nut	4
8	Hexagonal screw	4
9	Socket screw	4
10	Cross beam	4
11	Presser bit for heating elements	4
12	Heating elements	4
13	Upper pan	2
14	Handle	2
15	Nut	2
16	Lower pan	2
18	Nut	8
19	Cross screw	8
21	Spacing pipe	4
22	Screw	8
23	Cross head screw	4
24	Bushing A	4
25	Switch	2
26	Facial	2
27	Cross head screw	4
28	Foot	4
29	Bottom board	1
30	PC board	2
31	Electrical parts base	2
33	Terminal	2
35	Bottom board	1
36	Bracket for rotating arm	2
37	Hexagonal bolt	4
38	Snap Bushing	2
39	Back board	1
40	Socket screw	4
42	Collision bead	2
43	Spacing board	2
44	Spacing pin	2
45	Angle spacing sleeve	2
46	Bearing bracket	2
47	Socket screw	4
48	Cross screw	4
49	Back board	1

Diagram No.	Description	Qty
50	Rotating shaft	2
51	Nut	4
52	Lower rotating shaft	2
53	Hexagonal bolt	4
54	Shaft circlip	2
55	Probe( PC board includes probe)	2
56	Nut	2
57	Crumb tray	2





## 1-YEAR LIMITED WARRANTY

Admiral Craft Equipment Corp. (the "Company") warrants this product (the "Product") will be free from failures in material and workmanship for one (1) year from the date of original purchase with proof of purchase, provided that the Product is operated and maintained in conformity with the Owner's Manual. This Limited Warranty is non-transferable. During this period, your exclusive remedy is repair or replacement without charge of the Product or any component found to be defective at the Company's discretion. If the Product or any component is no longer available, the Company will replace it with a similar one of equal or greater value. This Limited Warranty is void if the Product is used with voltage other than 120 Volts. **THIS WARRANTY IS IN LIEU OF ALL IMPLIED WARRANTIES, INCLUDING WARRANTIES OF MERCHANTABILITY, FITNESS FOR A PARTICULAR PURPOSE, PERFORMANCE, OR OTHERWISE, WHICH ARE HEREBY EXCLUDED. IN NO EVENT SHALL THE COMPANY BE LIABLE FOR ANY DAMAGES, WHETHER DIRECT, INDIRECT, INCIDENTAL, FORSEEABLE, CONSEQUENTIAL, OR SPECIAL ARISING OUT OF OR IN CONNECTION WITH THIS PRODUCT INCLUDING DAMAGES ARISING FOR FOOD OR BEVERAGE SPOILAGE CLAIMS.**

You may have other legal rights depending upon where you live. Some States or Provinces do not allow limitations on warranties so the foregoing may not apply to you.

## WARRANTY EXCLUSIONS

---

### IMPROPER ELECTRICAL CONNECTIONS:

The Company is not responsible for the repair or replacement of failed or damaged components resulting from electrical power failure, the use of extension cords, low voltage, or voltage spikes to the Product.

### IMPROPER USAGE:

This Limited Warranty does not cover failure or other damages to the Product resulting from (i) improper usage or installation or failure to clean and/or maintain the Product as set forth in the Owner's Manual; or (ii) accident, misuse, abuse, negligence, or modification or alteration of the Product.

### CONSUMABLES:

This Limited Warranty does not include consumables or wear-and-tear items such as legs, feet, plastic component parts, splash shields, filters, gaskets, and non-stick cooking surfaces.

### ADJUSTMENTS & CALIBRATIONS:

Leveling, tightening of fasteners, or utility connections normally associated with the original installation are the responsibility of the dealer, installer, or the end user and not the responsibility of the Company and will not be considered warranty issues.

If you think the Product has failed, or requires service, within its warranty period, please contact the Company's Customer Care Department through our website at: [www.admiralcraft.com](http://www.admiralcraft.com) "Service" --> "Technical Support Request". A receipt proving the original purchase date will be required for all warranty claims, handwritten receipts are not accepted. You may also be required to return the Product for inspection and evaluation. Return shipping costs are not refundable. The Company is not responsible for returns lost in transit.

This Limited Warranty is Valid only in the USA and Canada.