

## INSTALLING BATTERIES

Requires 3 AAA batteries. Batteries not included. Battery compartment cover is located on the back of the panda. Use a screwdriver to remove the battery compartment cover. Install 3 fresh AAA Batteries. Make sure the "+" and "-" ends are inserted correctly, as indicated in the battery compartment. Replace the battery compartment cover. Do not over-tighten the screw.

### Battery Safety Information

- Replacing batteries should always be done by an adult or under the supervision of an adult.
- Always follow the instructions carefully. Use only batteries specified and be sure to insert them correctly matching the + and - polarity markings.
- Rechargeable batteries: do not mix these with any other type of batteries.
- Rechargeable batteries should always be removed from the product before recharging.
- Recharging should be done under adult supervision.
- Do not recharge other battery types.
- Do not short-circuit the supply terminals.
- Do not mix used batteries with new ones, standard (saline) with alkaline and rechargeable batteries with standard or alkaline batteries.
- Do not try to supply the product with power through use of mains power or another independent power supply system.
- Remove batteries if product is not to be played with for a long time.
- Remove exhausted or dead batteries from the product.
- Bring your used batteries to an authorised waste disposal centre.
- Keep batteries away from fire. Danger of explosion.
- Do not use this product in case of damage to the electrical parts.
- Please retain this information for future use.

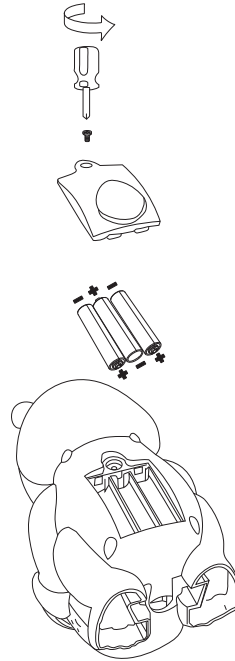


Fig. 4

©2021 MGBl. PANDAFUN is a registered trademark. All rights reserved. Distributed by University Games Corporation, 2030 Harrison Street, San Francisco, CA 94110. Retain this information for future reference.  
MADE IN CHINA. B13 08/21

This device complies with part 15 of the FCC Rules. Operation is subject to the following two conditions: (1) This device may not cause harmful interference, and (2) this device must accept any interference received, including interference that may cause undesired operation.

**WARNING:**  
CHOKING HAZARD—Small parts.  
Not for children under 3 years.

3 x 1,5V  
AAA/LR03  
- 1,5V +



CE



Ages 4 and Up  
2 or More Players



02048

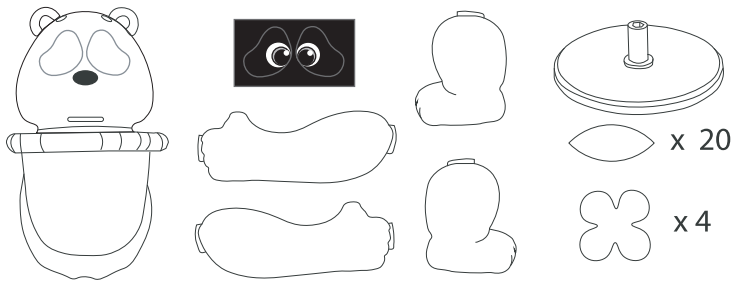
# PANDA FUN<sup>®</sup>



# INSTRUCTIONS

## CONTENTS:

1 Electronic Panda (in 5 pieces)\*, 1 Base, 20 Fabric Bamboo Leaves (5 Red, 5 Yellow, 5 Green and 5 Blue), 4 Fabric Flowers (1 Red, 1 Yellow, 1 Green and 1 Blue) and 1 Sticker Sheet. \*requires 3 AAA batteries, not included.



## OBJECT OF THE GAME:

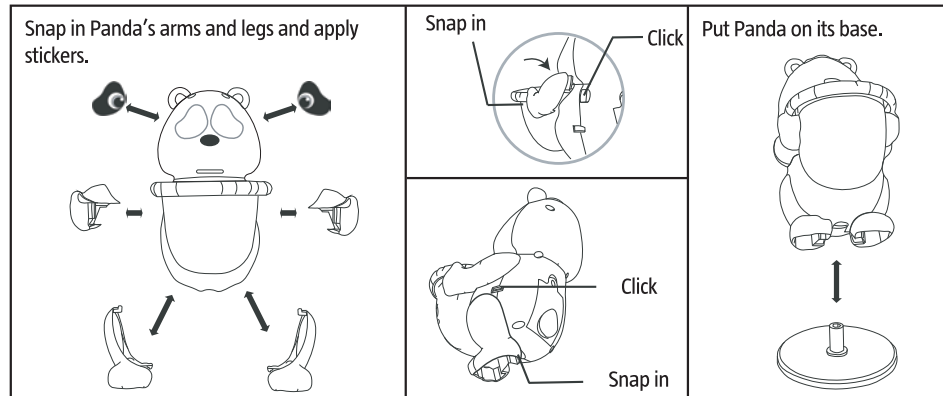
Hurry up! Panda keeps sneezing and blowing away all the Flowers and Leaves! Help Panda collect all of the Bamboo Leaves and Flowers before the music stops.

## SET UP:

(To be performed by an adult)

1. Carefully assemble the Panda as shown in Figure 1. Ask an adult for help with this.

Fig. 1



2. Insert batteries (see "battery installation" at the end of the instructions).
3. Place Panda in the middle of all players.
4. All players decide together how they want to play the game: collaborative or competitive.

## HOW TO PLAY:

### Collaborative Game Play

1. Place all of the Flowers and Leaves in the basket.
2. Activate Panda with the button on top of his head as shown in Figure 2: Panda will start turning around (about 90 seconds) and sneezing randomly as shown in Figure 3, making the Leaves and Flowers in his basket fly away!
3. Everyone plays at once: all players hurry to collect all Leaves and Flowers and put them back into Panda's basket.
4. If all Leaves and Flowers are in the basket when the music stops, all players win!

### Competitive Game Play

1. Players each choose a color and put their Flowers and Leaves in the basket.
2. Activate Panda with the button on top of his head as shown in Figure 2: Panda will start turning around (about 90 seconds) and sneezing randomly as shown in Figure 3, making the Leaves and Flowers in his basket fly away!
3. Everyone plays at once: all players hurry to collect all leaves and flowers of their chosen colour and put them back into panda's basket.
4. When the music stops, the player with the most leaves and flowers in the basket is the winner.

Press the top button to start.

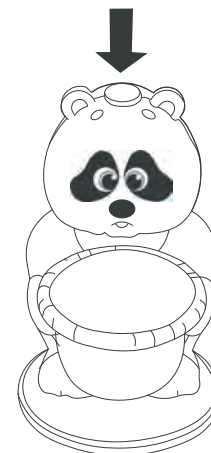


Fig. 2

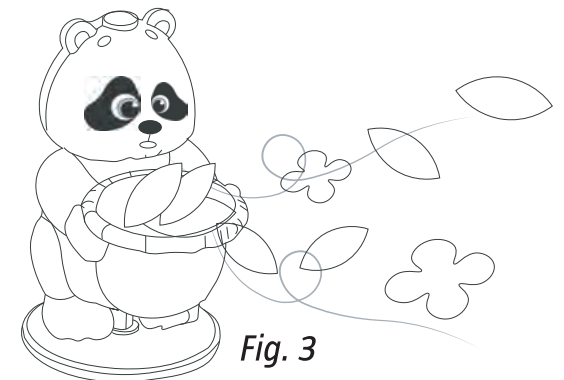


Fig. 3