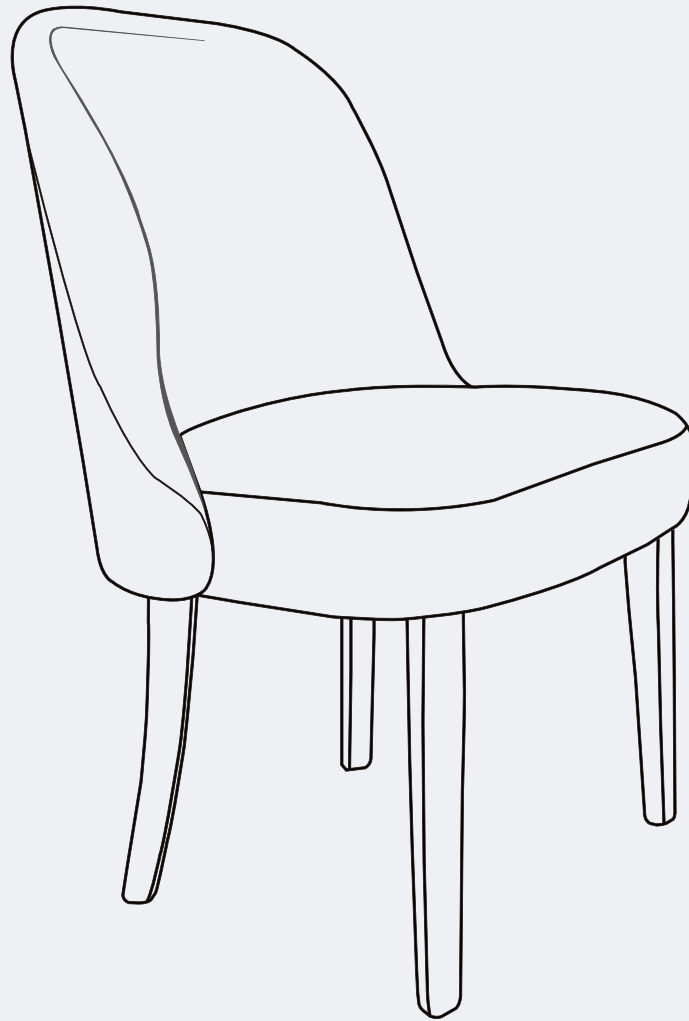


# INSTRUCTION MANUAL



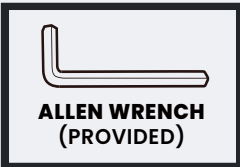
Water and Stain Resistant Boucle Upholstered  
Side Chair

**V1.0**

## ! CARE & MAINTENANCE

- We highly recommend immediate clean of the upholstery fabric, even though it is treated as water and stain repellent. Clean the chair with lukewarm water, mild detergent, & soft cloth.
- Please do not exceed the weight limitation of this item. Do not stand on as a step ladder.
- Firmly secure all bolts before use. Make sure all bolts are secure every 90 days.
- Please adjust the speed slowly when you use electric drill for assembling to avoid screw slippage.
- Do not use or store this item in the proximity of open flame or flammable/combustible chemicals.

## TOOLS REQUIRED



**260 LBS  
CAPACITY**

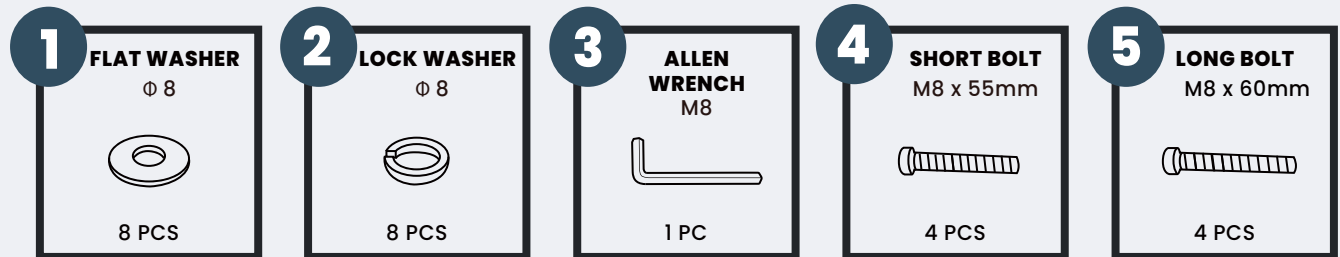


**1 PERSON  
ASSEMBLY**

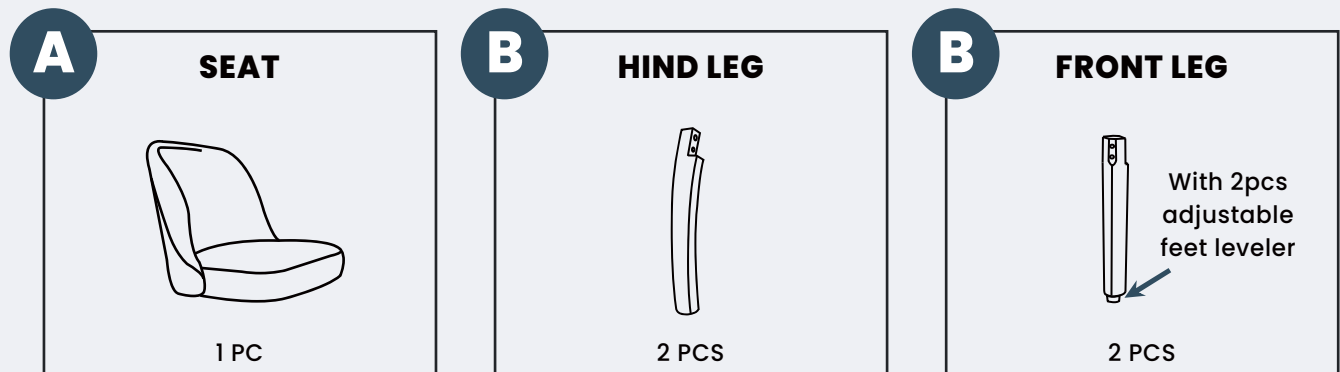


**UP TO 20 MIN.  
ASSEMBLY**

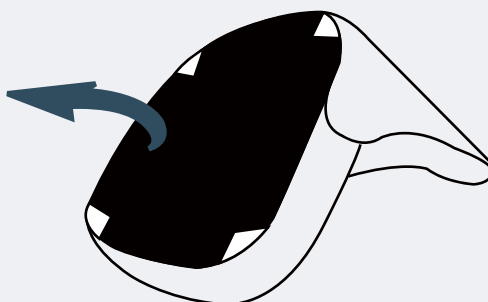
## HARDWARE



## PARTS



Open the black fabric cover  
and take out legs and hardware.

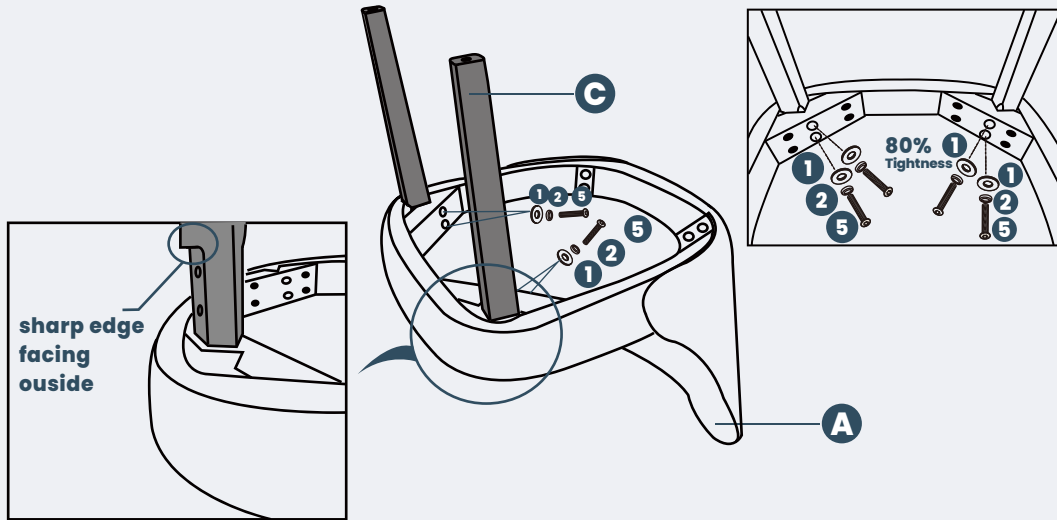


## PRODUCT ASSEMBLY

1

Place **part (A) Seat** upside down on flat floor. Put 2pcs **part (C) Front Legs** to front of the **Seat** as below and loosely attach with 4 sets of **hardware (#5 Bolt + #2 Lock Washer + #1 Flat Washer)** by 60%-80% tightness.

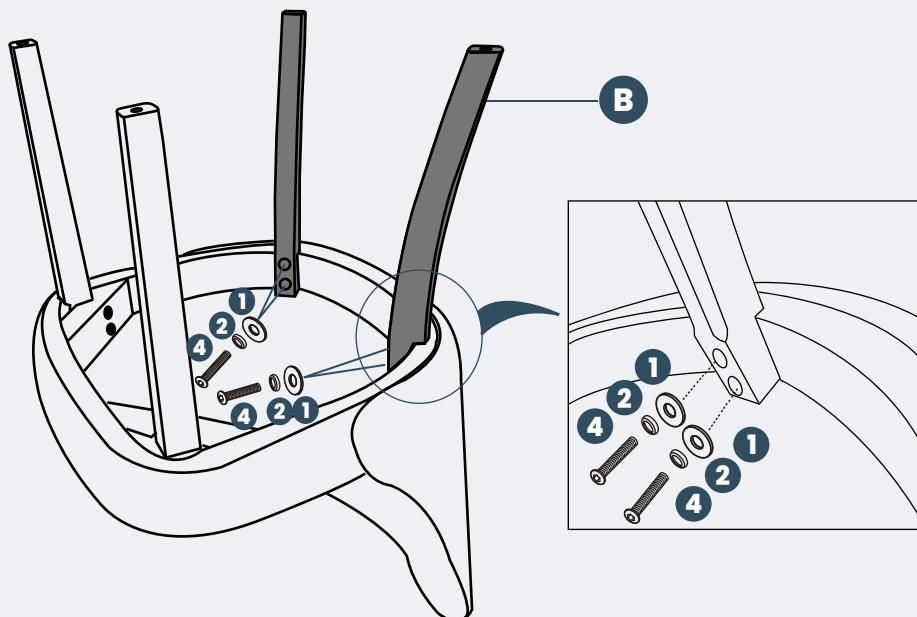
Attention: Make sure the sharp edge and holes covered with warning stickers are facing the outside of the seat.



## PRODUCT ASSEMBLY

2

Put 2 pcs **part (B) Hind Legs** to hind of the **Seat** as below and loosely attach with 4 sets of **hardware (#4 Bolt + #2 Lock Washer + #1 Flat Washer)** by 60%-80% tightness.

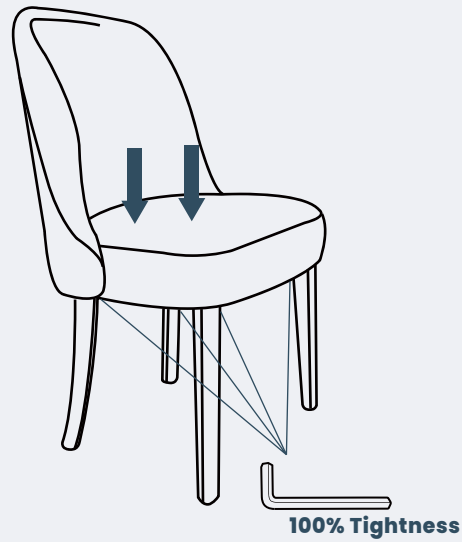


## PRODUCT ASSEMBLY

**3**

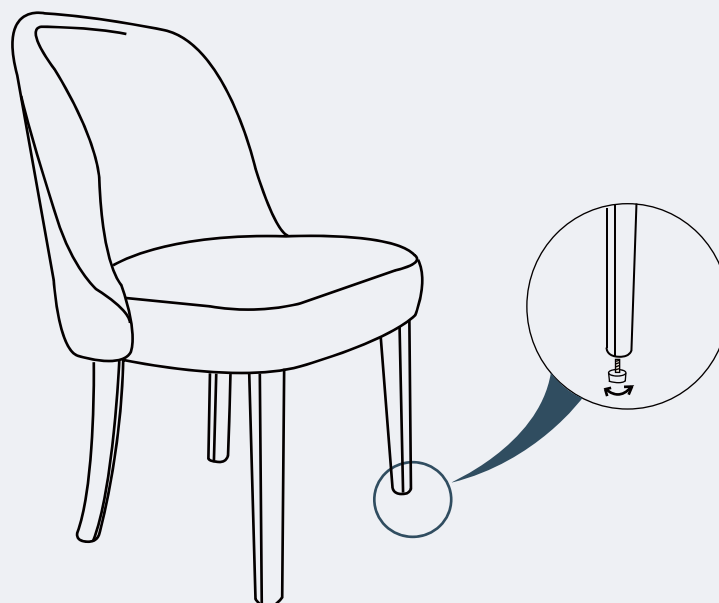
Place the chair in normal position, sit on the seat and press downward till you feel the legs touch the ground evenly.

Tighten all bolts now, make sure the chair is steady enough to use.



**4**

Adjustable feet levelers are provided for you to further adjust the level of the chair.



---

## CLEANING TIPS

**REGULAR CLEAN:** Use a mixture of warm water and mild soap. Gently scrub the surface with a soft bristle brush to remove any dirt or stains.

**QUICK CLEAN:** You can simply wipe down the furniture with a damp cloth.

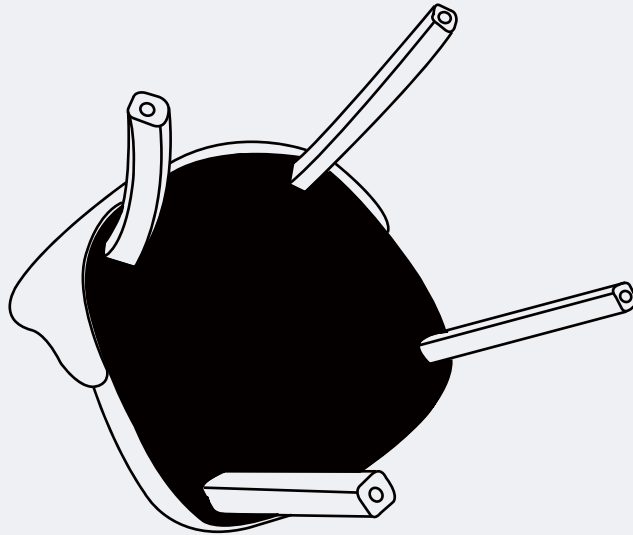
Regular cleaning not only preserves the aesthetic appeal of your furniture, but also helps extend its lifespan.

---

## PRODUCT ASSEMBLY

**5**

Check the status of the chair and make sure every part is steady.  
Cover the black fabric back onto bottom of the seat and turn it to normal position.



**6**

Enjoy your boucle side chair!

