



2-1/2" SMARTLB™ CONDUIT BODY DIE-CAST ALUMINUM

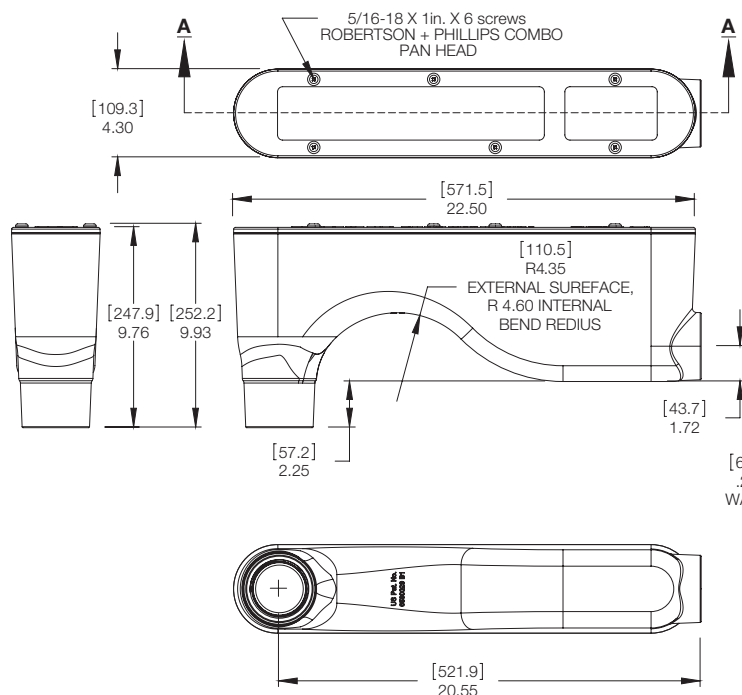


FEATURES:

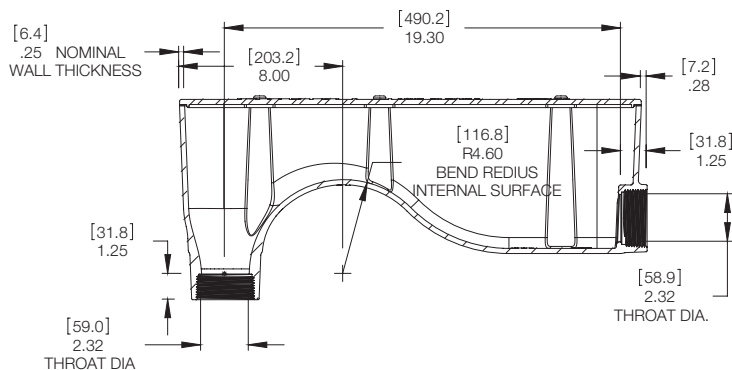
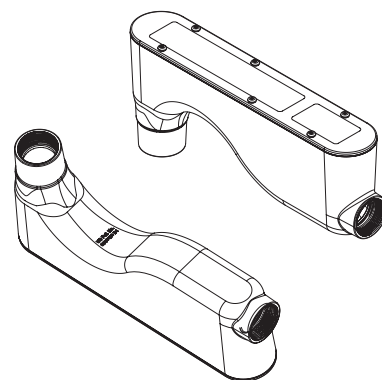
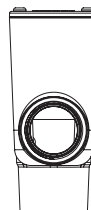
- For use with EMT, IMC, Rigid conduit or LT Flexible conduit & fittings.
- Suitable for indoor/outdoor (OSP) & plenum use.
- Built-in radius helps prevent cables from getting damaged.
- Includes gasketed cover for wet locations.
- Meets minimum bend radius of ANSI/TIA/EIA 568 & NECA/FOA.
- Recommended by BICSI TDMM 13th for communication cable.

TYPE OF INSTALLATION: New Work & Old Work

CERTIFICATIONS: CSA US Listed



[1.5]
.06
GASKET THICKNESS
UNCOMPRESSED



SECTION A-A

MODEL#	MATERIAL		UPC	I20F5		MASTER QTY	TRADE SIZE
KBLB250	Die-cast Aluminum		784297021985	50784297021980		4	2-1/2 in.
ITEM HEIGHT	ITEM WIDTH	ITEM DEPTH	ITEM WEIGHT	MASTER HEIGHT	MASTER WIDTH	MASTER DEPTH	MASTER WEIGHT
7.51 in.	22.78 in.	4.30 in.	14.00 lbs.	23.50 in.	20.50 in.	10.50 in.	56.00 lbs.

**BUILT FOR DURABILITY.
BUILT FOR RELIABILITY.
BUILT FOR WORK.™**

1-855-798-6657 | SOUTHWIRE.COM

©2021 Southwire Company, LLC. All rights reserved.
®/TM - ®Registered Trademark and ™Trademark of Southwire Company, LLC