

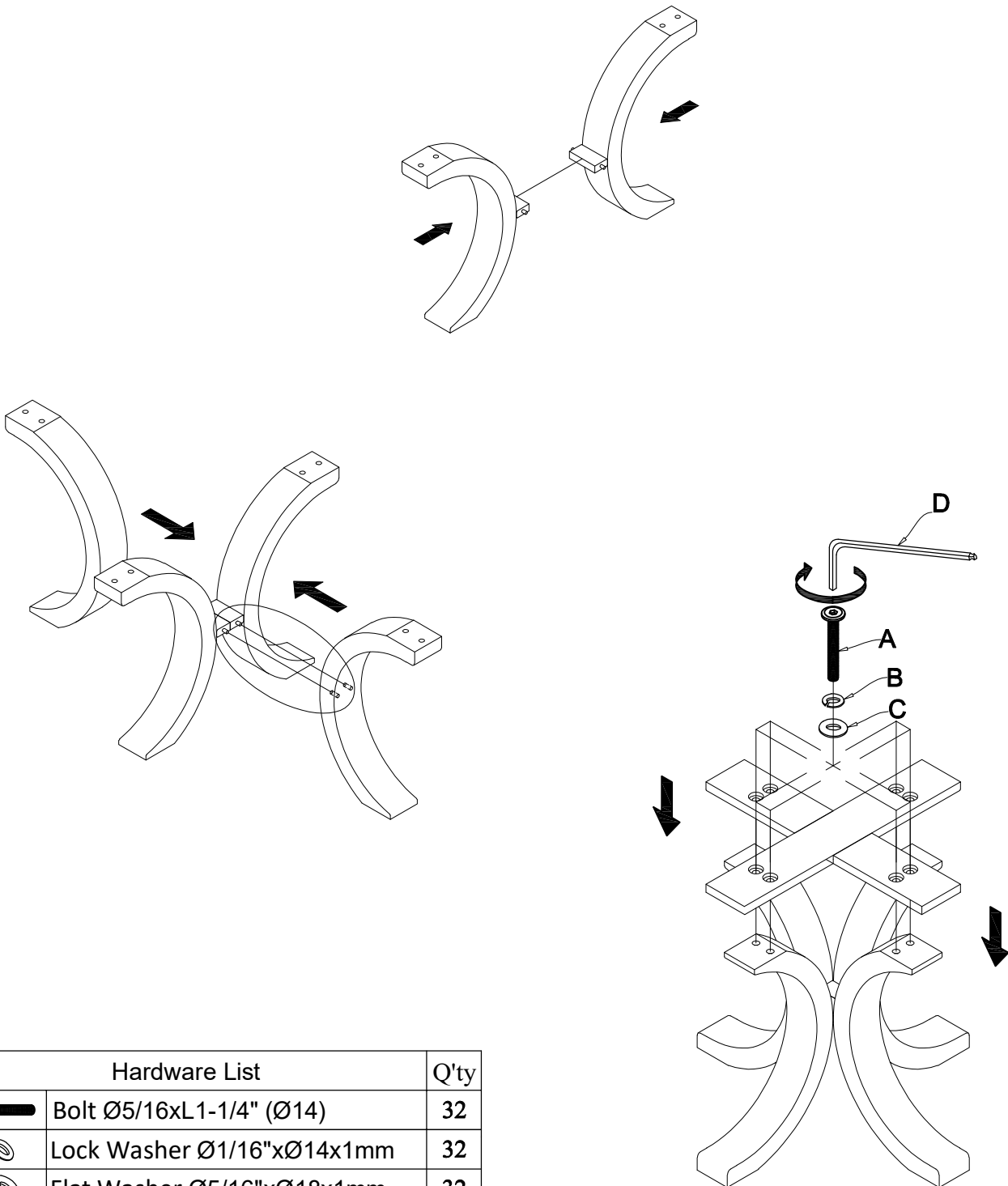
B E R N H A R D T

Assembly Instructions

DINING TABLE

Model # : 311 - 274 - 275

Thank you for purchasing Bernhardt furniture . Please check all packing material to ensure proper assembly. Please read all instructions carefully before starting the assembly process . Some parts are large and heavy and require AT LEAST TWO PEOPLE to assemble , in order to prevent possible injury and / or damage to the piece



| No. | Hardware List | | Q'ty |
|-----|---|----------------------------|------|
| A |  | Bolt Ø5/16xL1-1/4" (Ø14) | 32 |
| B |  | Lock Washer Ø1/16"xØ14x1mm | 32 |
| C |  | Flat Washer Ø5/16"xØ18x1mm | 32 |
| D |  | Allen Wrench 4mm | 1 |

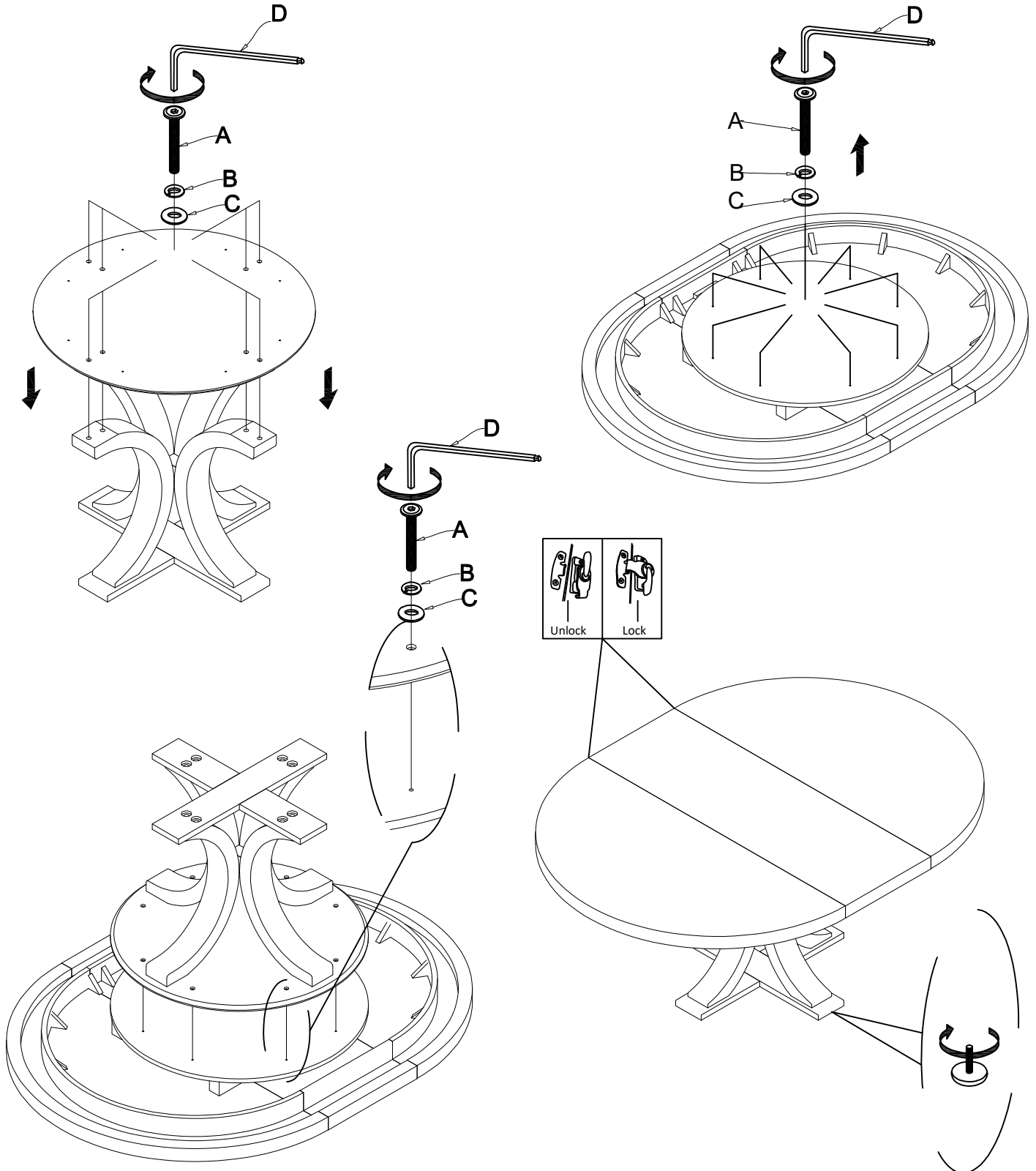
Cleaning instruction: Wipe surface to be cleaned with damp cotton cloth ; dry immediately with soft dry cotton cloth to remove all moisture .

Assembly Instructions

DINING TABLE

Model # : 311 - 274 - 275

Thank you for purchasing Bernhardt furniture . Please check all packing material to ensure proper assembly. Please read all instructions carefully before starting the assembly process . Some parts are large and heavy and require **AT LEAST TWO PEOPLE** to assemble , in order to prevent possible injury and / or damage to the piece



Cleaning instruction: Wipe surface to be cleaned with damp cotton cloth ; dry immediately with soft dry cotton cloth to remove all moisture .