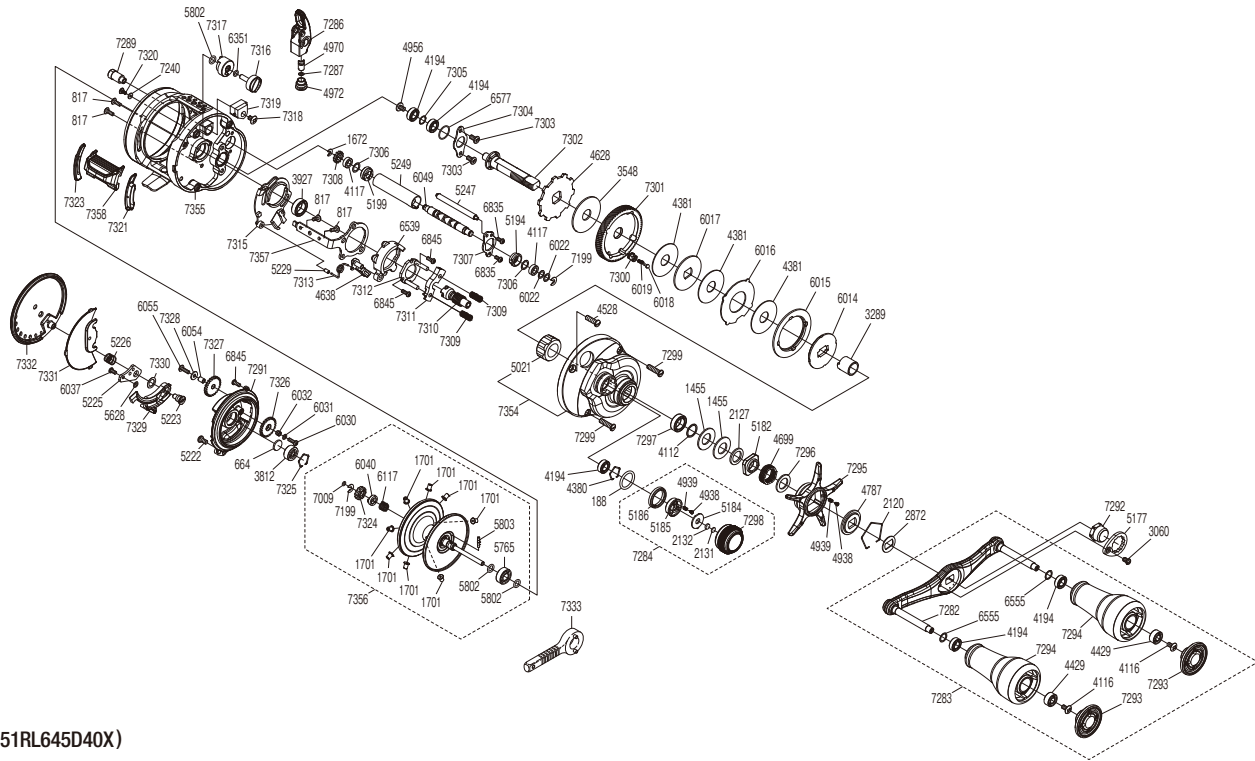


SHIMANO

CALCUTTA CONQUEST MD

23CQMD400XLH



(51RL645D40X)

#	Part No.	Description	#	Part No.	Description	#	Part No.	Description
188	109EB	O Ring	5226	10KNA	Damper Spring	7296	10QXM	Washer
664	1057S	Spacer B	5229	108S5	Clutch Pawl Spring Collar	7297	105BS	Ball Bearing
817	10MPW	Screw	5247	10GUH	Level Wind Guide	7298	13YKC	Cast Control Cap
1455	1052E	Drag Spring Washer (H)	5249	10NFV	Level Wind Guard	7299	13MBW	Screw
1672	105NC	E Lock	5628	10280	Washer	7300	13VG9	Drag Click Pin Holder
1701	10CPE	Brake Collar (Gray)	5765	105CA	Ball Bearing	7301	13UY9	Drive Gear
2120	10KXV	Click Plate Retainer	5802	10TNF	O Ring	7302	13YKD	Drive Shaft
2127	10J1N	Star Drag Spacer	5803	10MD0	Spool Clutch Pin	7303	1055F	Screw
2131	10897	Cast Control Spacer	6014	10D54	Pressure Plate	7304	13VAE	Drive Shaft Retainer
2132	1085G	Cast Control Spacer	6015	10JAZ	Drag Click Ratchet	7305	13Y0Z	Washer
2872	107QQ	Drive Shaft Shield	6016	10KQL	Eared Washer	7306	10G8F	Washer
3060	10CZ5	Screw	6017	10LB6	Drag Washer	7307	13SCJ	Worm Bushing Retainer
3289	10BN7	Roller Clutch Inner Tube	6018	10C0S	Drag Click	7308	13S6P	Idle Gear C
3548	10CHZ	Drag Washer	6019	10J89	Click Spring	7309	13T1T	Yoke Spring
3812	105C1	Ball Bearing	6022	10J16	Washer	7310	13SQ6	Pinion Gear
3927	10EX8	Ball Bearing	6030	10LVM	Screw	7311	13T1S	Yoke
4112	10J4J	Washer	6031	10HVD	Washer	7312	13UEP	Clutch Cam Retainer
4116	103E9	Screw	6032	10ECQ	Idle Gear B Support	7313	13YKE	Clutch Pawl Spring
4117	10PXY	Bushing	6037	10U0S	Screw	7315	13UEN	Clutch Guard
4194	105BP	Ball Bearing	6040	10MCY	Spool Shaft Cam	7316	13YKF	Br Dial
4380	1057X	Retainer	6049	101TD	Worm Shaft	7317	13YKG	Brake Cam
4381	10CHW	Drag Washer	6054	10TUH	Idle Gear D Support	7318	103L4	Screw
4429	10KX2	Ball Bearing	6055	10TTU	Screw	7319	13YKH	Brake Holder
4528	10A6X	Screw	6117	10E20	Spool Shaft Spring	7320	13JWQ	Screw
4628	10D6Y	Anti-Reverse Ratchet	6351	10CFZ	O Ring	7321	13TDM	Clutch Bar Guide B
4638	105ZU	Clutch Pawl	6539	10SX6	Clutch Cam	7323	13TDL	Clutch Bar Guide A
4699	10A71	Star Drag Spring	6555	104FH	Washer	7324	13SW5	Idle Gear A
4787	10J1Y	Star Drag Click Plate	6577	10SZ4	O Ring	7325	10GEW	Bearing Retainer
4938	10B27	Click Pin	6835	10LVF	Screw	7326	13RUX	Idle Gear B
4939	10988	Click Spring	6845	101CN	Screw	7327	13S6N	Idle Gear D
4956	10PVT	Screw	7009	10E7H	O Ring	7328	13PKE	Washer
4970	10FFT	Line Guide Pawl	7199	105NK	E Lock	7329	13RNS	B Side Plate Cam Lever
4972	10FJC	Pawl Cap	7240	13Y8G	Washer	7330	13YKJ	Washer
5021	10F33	Roller Clutch Bearing	7282	13YK2	Handle Shank Assembly	7331	13YKH	B Side Plate Seal
5177	10Q66	Handle Nut Plate	7283	13YK3	Handle Assembly	7332	13YKL	B Side Plate
5182	10A3V	Star Drag Nut	7284	13YK4	Cast Control Cap Assembly	7354	13YKY	A Side Plate Assembly
5184	10L2E	Cast Control Click Plate	7286	13GH8	Line Guide Pawl Holder Assembly	7355	13YKZ	Frame Assembly
5185	10BSX	Click Pin Holder	7287	13GUQ	Washer	7356	13YL0	Spool Assembly
5186	10L70	Cast Control Click Holder	7289	13YK7	Magnet Holder Assembly	7357	13YL1	Clutch Plate
5194	10N9Q	Worm Bushing A	7291	13YK9	Dial Case Assembly	7358	13YL2	Clutch Button Assembly
5199	104SP	Worm Bushing B	7292	101AS	Handle Nut			
5222	10LSL	Screw	7293	13YKA	Handle Knob Seal			
5223	10GM6	B Side Plate Insert	7294	13YKB	Handle Knob			
5225	10AYX	Damper Bush	7295	13V35	Star Drag	7333	10NC0	Wrench (Accessory)

Please note that the number of adjusting washers may not be the same as shown in the exploded views.
(Adjustment will vary with each individual product.)

(240620)_004