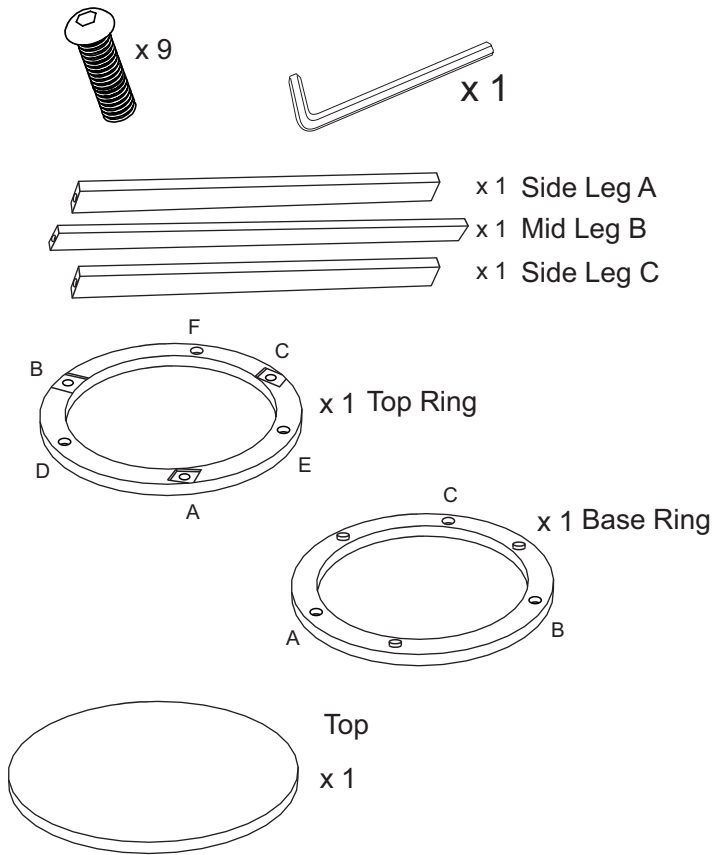
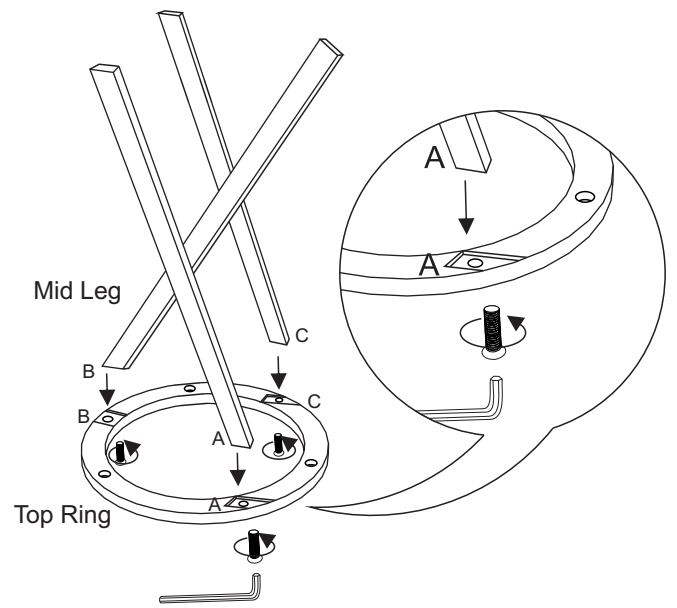


Assembly Instructions Aja Side Table

Components & Hardware List

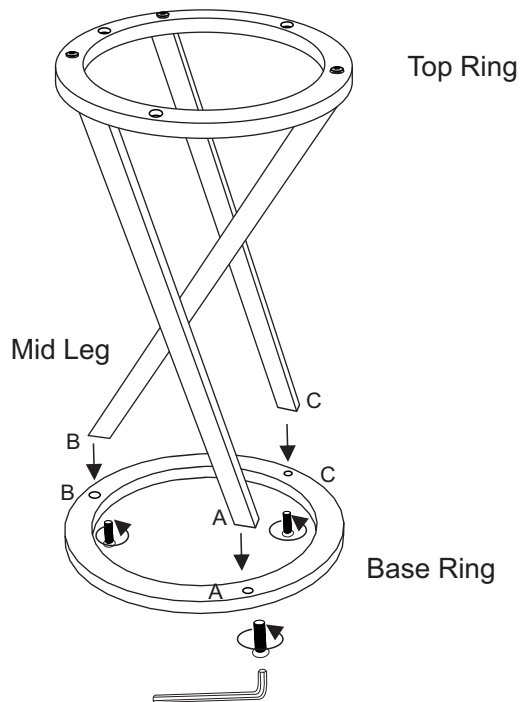


1



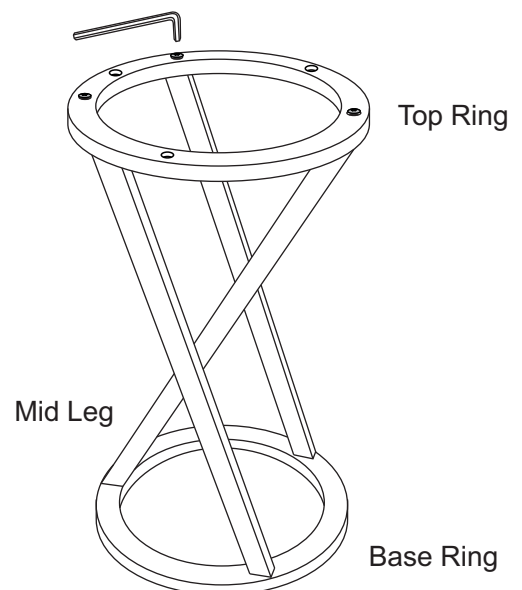
Keep the top ring on clean surface with assembly showing upwards. Following the direction arrows marked on ring and legs, place the legs (A,B,C) with corresponding grooves marked (A,B,C) on the ring. Secure the legs with help of allen Screws. Fasten all screws partially.

2



Align the leg holes (A, B & C) to the holes (A, B & C) created on the base ring and tighten the allen screws upto 100% with the help of allen key.

3



Now tighten the top ring allen screws upto 100%.

Note: In this assembly process, help of two persons is recommended.

