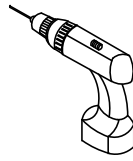


Breckenridge Linen Cabinet : 330-LC-LNO/330-LC-WWO

Assembly/Installation Instructions for Reversible Door

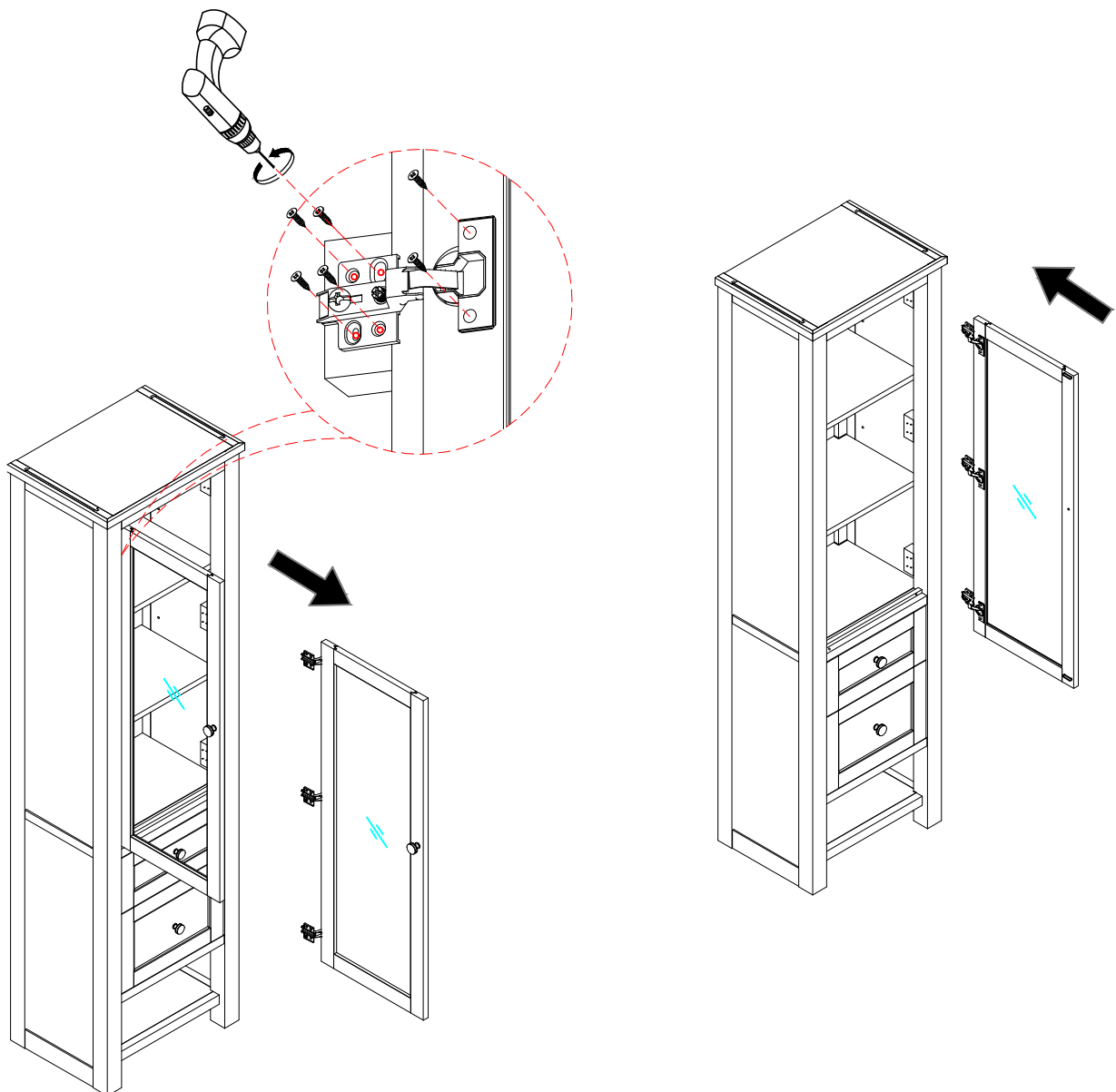
**Materials
for
Installation:**



Drill

Step 1 Notes: Remove the door

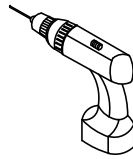
Step 2 Notes: Rotate the door from left to right



Breckenridge Linen Cabine : 330-LC-LNO/330-LC-WWO

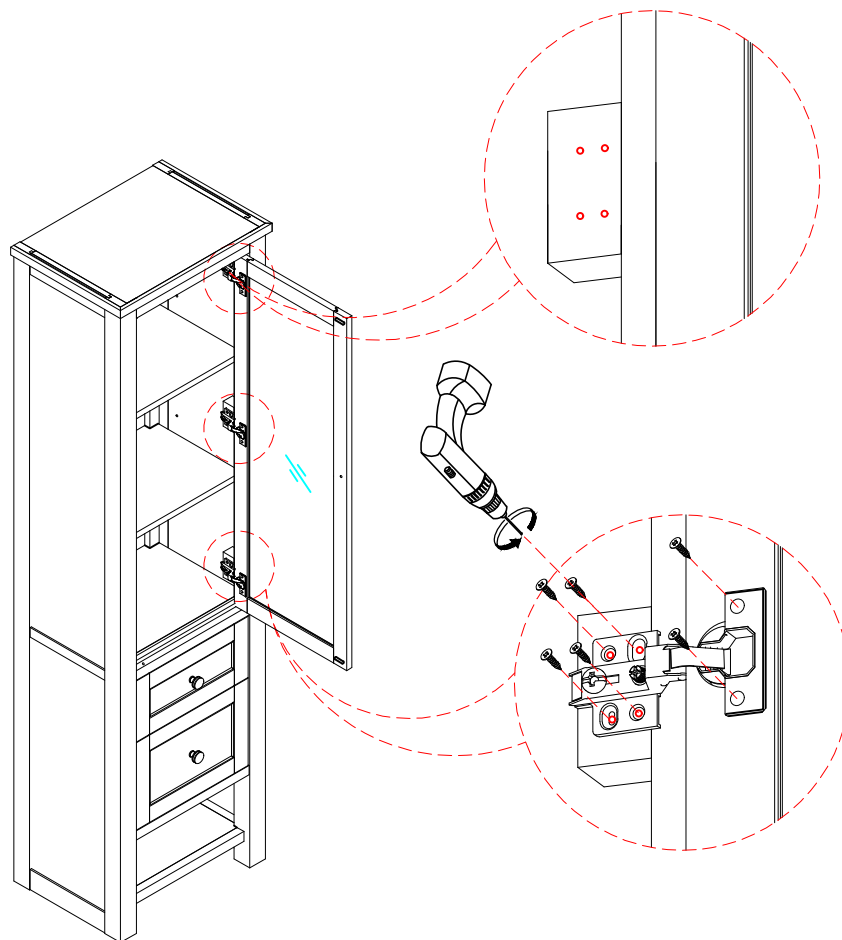
Assembly/Installation Instructions

Materials for Installation:



Drill

Step 3 Notes: Attach the door to the cabinet by screws according to the holes which have been drilled on the wood blocks



Step 4 Notes: The cabinet is equipped three color knobs, one color (LNO-MBK color, WWO-SN color) is attached on the door and drawer fronts, the other two colors are packed with the cabinet, if you want use the other one color, please find and replace the knobs.