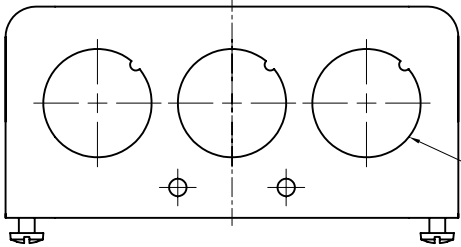
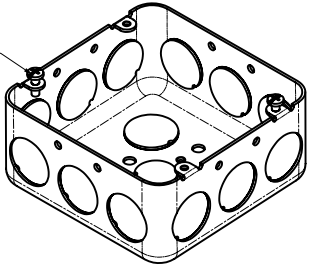


SIDES	BOTTOM
12 3/4" KNOCKOUTS	2 1/2" KNOCKOUTS
	2 3/4" KNOCKOUTS
	1 Ground Hump
2 PCS 8-32×1/2 Screws Installed	
Material:Steel-0.0625"-C.R.S , red powder coating	

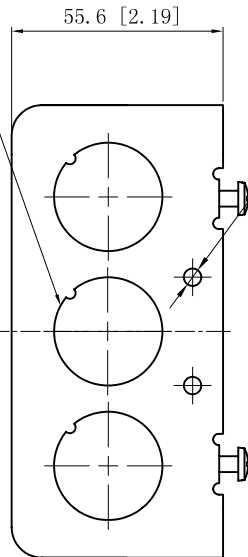


6×3/4"KNOCKOUTS φ=28.50[φ=1.122]
MIRROR

#8-32,×2



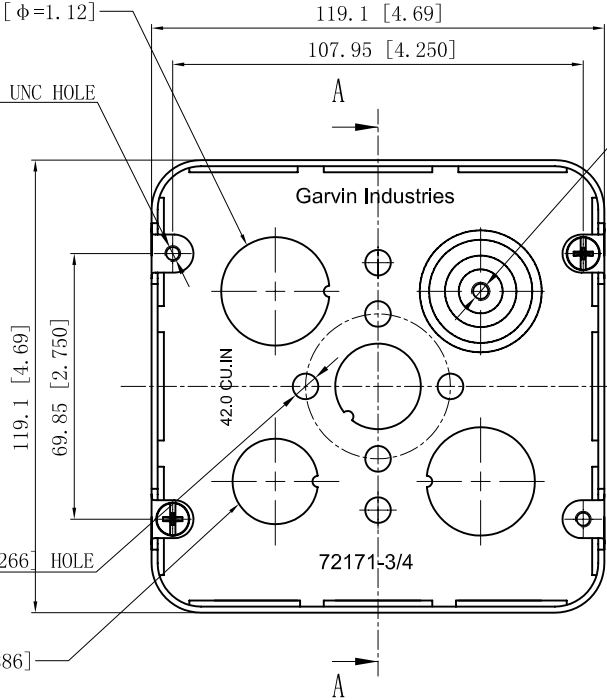
6×3/4"KNOCKOUTS φ=28.50[φ=1.122]
MIRROR



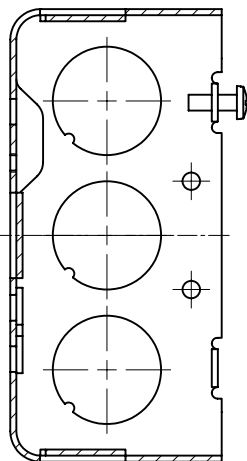
2×3/4"KNOCKOUTS φ=28.5[φ=1.12]

4-#8-32 UNC HOLE

8-∅4.2 [∅0.17] HOLE



#10-32 UNF HOLE



CUTAWAY VIEW A-A

2×1/2"KNOCKOUTS φ=22.50[φ=0.886]

6-∅6.75 [∅0.266] HOLE

DESCRIPTION
TRADE REFERENCE TERMS

This data sheet is for reference only.GARVIN INDUSTRIES reserves the right to make changes to the design without prior notice.

STANDARD PACKING
25 PCS

GARVIN INDUSTRIES		
TITLE 4-11/16" SQUARE "DRAWN" BOXES (2-1/8"DEEP)		
SIZE A4	DWG NO. 72171-3/4RED	REV
DATA SHEET		