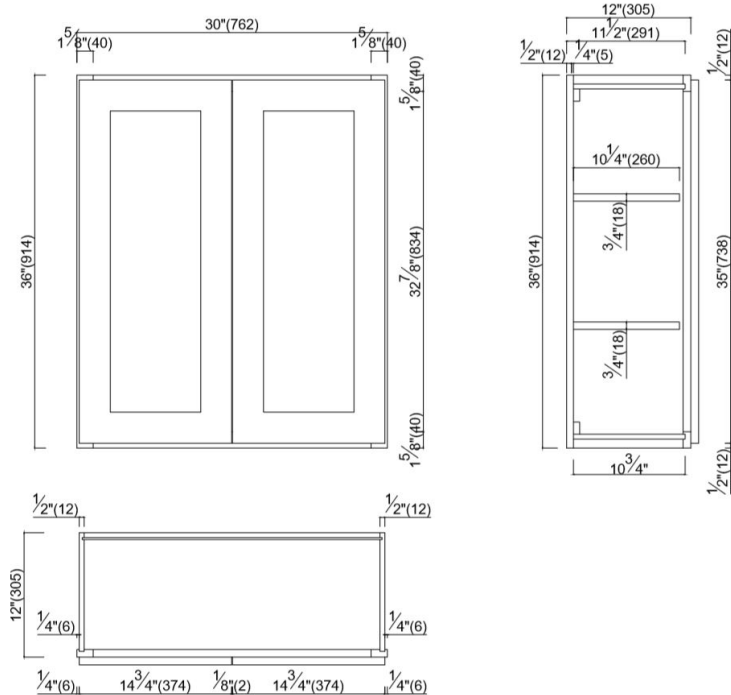


### Brookings Fully Assembled Shaker Wall Kitchen Cabinet 30x36x12

Espresso



## SPECIFICATIONS

<b>MATERIAL CONSTRUCTION:</b>	Wood
<b>WOOD SPECIES:</b>	Maple
<b>ASSEMBLED DIMENSIONS:</b>	36" H x 30" L x 12" D
<b>ASSEMBLED WEIGHT:</b>	58.35 lbs.
<b>KITCHEN CABINET TYPE:</b>	Wall
<b>MOUNTING TYPE:</b>	Wall Mount
<b>CONSTRUCTION TYPE:</b>	Face Frame
<b>HINGE STYLE:</b>	Soft Close
<b>DOOR STYLE:</b>	2 Solid wood frame shaker
<b>NUMBER OF DRAWERS:</b>	0
<b>DRAWER DIMENSIONS 1:</b>	N/A
<b>DRAWER DIMENSIONS 2:</b>	N/A
<b>DRAWER DIMENSIONS 3:</b>	N/A
<b>DWR BOX MATERIAL:</b>	N/A
<b>DWR CONSTRUCTION:</b>	N/A
<b>DWR GLIDE:</b>	
<b>FAKE DWR QTY:</b>	0
<b>FAKE DWR LOCATION:</b>	N/A

<b>NUMBER OF SHELVES:</b>	2
<b>SHELF STYLE:</b>	Wood
<b>ADJUSTABLE SHELVES:</b>	Yes
<b>SHELF ADJUSTIBILITY INCREMENTS:</b>	2.5"
<b>SHELF DIMENSIONS:</b>	28.75" W x 10.25" D
<b>SHELF THICKNESS:</b>	0.75"
<b>SHELF MATERIAL:</b>	Plywood; Wood
<b>FACE FRAME MATERIAL:</b>	Maple
<b>SIDES MATERIAL:</b>	Plywood
<b>BOTTOM MATERIAL:</b>	Plywood
<b>BACK PANEL MATERIAL:</b>	Plywood
<b>BACK BRACE MATERIAL:</b>	Wood
<b>TOE KICK INSET WIDTH:</b>	N/A

<b>WARRANTY:</b>	1-Year limited warranty
<b>LEGAL FOR SALE IN CALIFORNIA:</b>	Yes
<b>CARB COMPLIANT:</b>	CARB Phase 2
<b>TSCA TITLE VI COMPLIANT:</b>	Yes



TYPE:  
JOB:  
ORDER CODE:  
APPROVALS: