

NOTES: UNLESS OTHERWISE SPECIFIED

1. MATERIAL SPECIFICATIONS:  
 BODY: BRASS  
 CONTACT: BERYLLIUM COPPER  
 INSULATOR: TEFLON

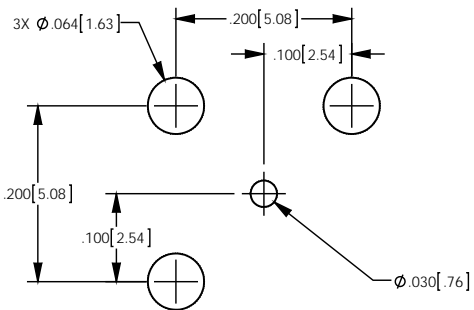
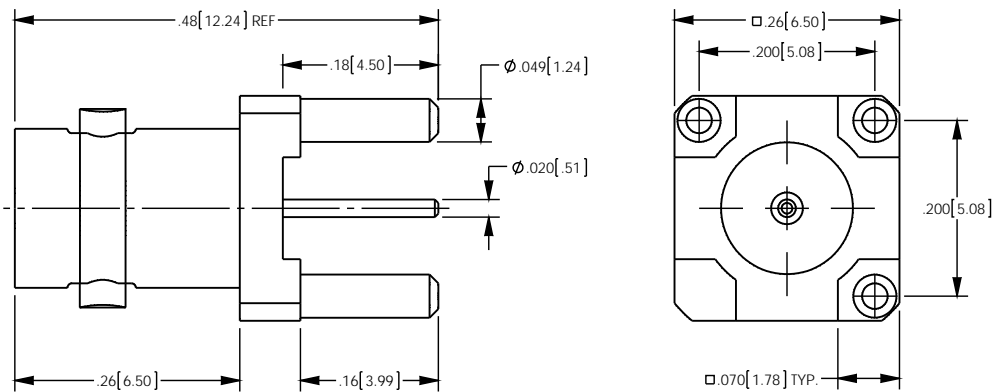
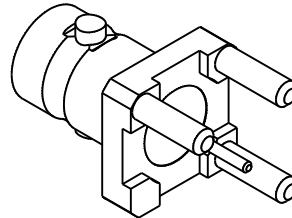
2. FINISH SPECIFICATIONS:  
 BODY & CONTACT: GOLD OVER NICKEL OVER COPPER

3. ELECTRICAL SPECIFICATIONS:  
 IMPEDANCE: 75 OHMS  
 FREQUENCY RANGE: DC - 6.0 GHz  
 RETURN LOSS (ON 0.090" PCB): < -20dB UP TO 3.0 GHz

4. COMPLIANT TO SMPTE 424M (3G-SDI) STANDARD

5. CONNECTOR INDIVIDUALLY BAGGED.

REV	DESCRIPTION	BY DATE	APPD
A	ER052721	PLJ/11/14	SK



PCB MOUNTING HOLE

CATALOG P/N: HHD361A714-TL

PER ASME Y14.5M-1994 UNLESS OTHERWISE SPECIFIED, DIMENSIONS ARE IN INCHES [MM] TOLERANCES: DECIMAL: .XX [XX] $\pm$ .01 [0.3] .XXX [XXX] $\pm$ .005 [0.13] .XXXX [XXXX] $\pm$ .XXXX				 by WINCHESTER Winchester Electronics Corporation 199 Park Road Ext Suite 104 Middlebury, Connecticut 06762	
ANGLE: $\pm 2^\circ$ SCALE: XX				THIRD ANGLE	
CUSTOMER SALES DRAWING				HD BNC PCB MOUNT JACK	
DRAWN	DATE	APPROVED	DATE		
KPL	10/25/2013	MSKPL	10/25/13		
APPROVED	DATE	APPROVED	DATE		
XXX	XX/XX/XX	XXX	XX/XX/XX		
<b>A</b>				SDHHD361A714-TL	SHIT OF REV 1 2 A