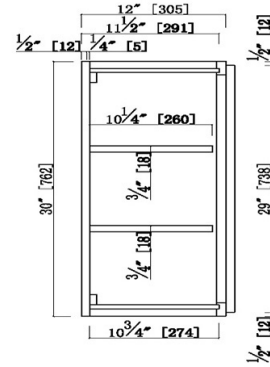
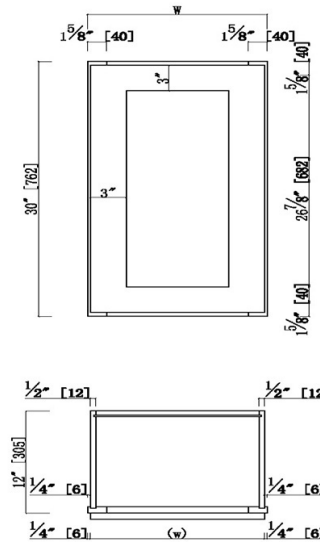


## Brookings Unassembled Shaker Tall Wall Kitchen Cabinet 21x30x12 White



<b>W2130</b>	<b>21"</b>	<b>20.5"</b>
<b>W1830</b>	<b>18"</b>	<b>17.5"</b>
<b>W1530</b>	<b>15"</b>	<b>14.5"</b>
<b>W1230</b>	<b>12"</b>	<b>11.5"</b>
<b>Item Name</b>	<b>W</b>	<b>(w)</b>

### SPECIFICATIONS

**MATERIAL CONSTRUCTION:** Wood  
**WOOD SPECIES:** Maple  
**ASSEMBLED DIMENSIONS:** 30" H x 21" L x 12" D  
**ASSEMBLED WEIGHT:** 33.44 lbs.  
**KITCHEN CABINET TYPE:** Wall  
**MOUNTING TYPE:** Wall Mount  
**CONSTRUCTION TYPE:** Face Frame  
**HINGE STYLE:** Soft Close  
**DOOR STYLE:** 1 HDF shaker door, reversible

**DRAWER DIMENSIONS 1:** N/A  
**DRAWER DIMENSIONS 2:** N/A  
**DRAWER DIMENSIONS 3:** N/A  
**DWR BOX MATERIAL:** N/A  
**DWR CONSTRUCTION:** N/A  
**DWR GLIDE:** N/A  
**FAKE DWR QTY:** 0  
**FAKE DWR LOCATION:** N/A

**WARRANTY:** 1-Year limited warranty  
**LEGAL FOR SALE IN CALIFORNIA:** Yes  
**CARB COMPLIANT:** CARB Phase 2  
**TSCA TITLE IV COMPLIANT:** Yes

**NUMBER OF SHELVES:** 2  
**SHELF STYLE:** Flat  
**ADJUSTIBLE SHELVES:** Yes  
**SHELF ADJUSTIBILITY INCREMENTS:** 2.5"  
**SHELF DIMENSIONS:** 19.5" W x 10.25" D  
**SHELF THICKNESS:** 0.75"  
**SHELF MATERIAL:** Plywood  
**FACE FRAME MATERIAL:** Solid Maple  
**SIDES MATERIAL:** Plywood  
**BOTTOM MATERIAL:** Plywood  
**BACK PANEL MATERIAL:** Plywood  
**BACK BRACE MATERIAL:** Wood  
**TOE KICK INSET WIDTH:** N/A  
**TOOLS NEEDED FOR INSTALLATION:** Phillips Screwdriver  
Mallet Wood Glue  
**FASTENER TYPE:** Wood Screw



**TYPE:**  
**JOB:**  
**ORDER CODE:**  
**APPROVALS:**