



# MR1 LED LED Area Luminaire

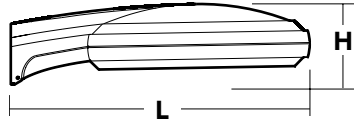


Catalog Number
Notes
Type

Hit the Tab key or mouse over the page to see all interactive elements.

## Specifications

<b>EPA:</b>	0.54 ft <sup>2</sup> (0.05 m <sup>2</sup> )
<b>Length:</b>	24-1/2" (62.2 cm)
<b>Width:</b>	18-5/8" (47.3 cm)
<b>Height:</b>	6-3/8" (16.2 cm)
<b>Weight (max):</b>	31 lbs (14.7 kg)



## A+ Capable Luminaire

This item is an A+ capable luminaire, which has been designed and tested to provide consistent color appearance and system-level interoperability.

- All configurations of this luminaire meet the Acuity Brands' specification for chromatic consistency
- This luminaire is A+ Certified when ordered with DTL® controls marked by a shaded background. DTL DLL equipped luminaires meet the A+ specification for luminaire to photocontrol interoperability<sup>1</sup>
- This luminaire is part of an A+ Certified solution for ROAM®2 control networks, providing out-of-the-box control compatibility with simple commissioning, when ordered with drivers and control options marked by a shaded background<sup>1</sup>

To learn more about A+, visit [www.acuitybrands.com/aplus](http://www.acuitybrands.com/aplus).

- See ordering tree for details.
- A+ Certified Solutions for ROAM require the order of one ROAM node per luminaire. Sold Separately: [Link to Roam](#); [Link to DTL DLL](#)

A+ Capable options indicated by this color background.

## Ordering Information

**EXAMPLE: MR1 LED 42C 700 40K SR5 MVOLT SPA DDBXD**

MR1 LED	Series	LEDs	Drive Current	Color temperature	Distribution	Voltage	Mounting
MR1 LED	42C	42 LEDs (one engine)	350 350mA 530 530mA 700 700mA	30K 3000K 40K 4000K 50K 5000K	SR2 Type II SR4 Type IV SR3 Type III SR5 Type V	MVOLT <sup>1</sup> 240 <sup>1</sup> 480 120 <sup>1</sup> 277 <sup>1</sup> 208 <sup>1</sup> 347	SPA Square pole mounting RPA Round pole mounting WBA Wall bracket

Control Options	Other Options	Finish (required)
<b>Shipped installed</b> PER NEMA twist-lock receptacle only (no controls) PER5 Five-wire receptacle only (no controls) <sup>2</sup> PER7 Seven-wire receptacle only (no controls) <sup>2</sup> DMG 0-10v dimming wires pulled outside fixture (for use with an external control, ordered separately) <sup>3</sup> BL30 Bi-level switched dimming, 30% <sup>4,5</sup> BL50 Bi-level switched dimming, 50% <sup>4,5</sup>	SF Single fuse (120, 277, 347V) <sup>1</sup> DF Double fuse (208, 240, 480V) <sup>1</sup> DFL Diffusing lens	DDBXD Dark bronze DBLXD Black DNAXD Natural aluminum DWHXD White DDBTXD Textured dark bronze DBLBXD Textured black DNATXD Textured natural aluminum DWHGXD Textured white



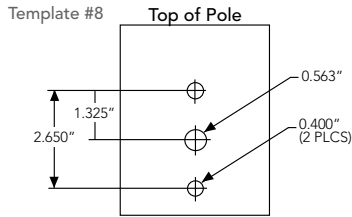
Commercial Outdoor

One Lithonia Way • Conyers, Georgia 30012 • Phone: 1-800-705-SERV (7378) • [www.lithonia.com](http://www.lithonia.com)  
© 2011-2023 Acuity Brands Lighting, Inc. All rights reserved.

MR1-LED  
Rev. 06/27/23

## Ordering Information

### Drilling



DLL127F 1.5 JU	Photocell - SSL twist-lock (120-277V) <sup>6</sup>
DLL347F 1.5 CUL JU	Photocell - SSL twist-lock (347V) <sup>6</sup>
DLL480F 1.5 CUL JU	Photocell - SSL twist-lock (480V) <sup>6</sup>
DSHORT SBK U	Shorting cap <sup>6</sup>
KMA8 DDBXD U	Mast arm adapter
SPA19/AS DDBXD U	Square pole DM19 to DM19AS adapter
RPA19/AS DDBXD U	Round pole DM19 to DM19AS adapter

For more control options, visit [DTL](#) and [ROAM](#) online.

Accessories  
Ordered and shipped separately.

Omero™ shares a unique drilling pattern with the AERIS™ family. Specify this drilling pattern when specifying poles, per the table below.

<b>DM19AS</b>	Single unit	<b>DM29AS</b>	2 at 90°
<b>DM28AS</b>	2 at 180°	<b>DM39AS</b>	3 at 90°
<b>DM49AS</b>	4 at 90°	<b>DM32AS</b>	3 at 120°*

Example: SSA 20 4C DM19AS DDBXD

Visit Lithonia Lighting's [POLES CENTRAL](#) to see our wide selection of poles, accessories and educational tools.

### Tenon Mounting Slipfitter \*

Tenon O.D.	Single Unit	2 at 180°	2 at 90°	3 at 120°	3 at 90°	4 at 90°
2-3/8"	AST20-190	AST20-280	AST20-290	AST20-320	AST20-390	AST20-490
2-7/8"	AST25-190	AST25-280	AST25-290	AST25-320	AST25-390	AST25-490
4"	AST35-190	AST35-280	AST35-290	AST35-320	AST35-390	AST35-490

\* For round pole mounting (RPA) only.

### NOTES

- MVOLT driver operates on any line voltage from 120-277V (50/60 Hz). Single fuse (SF) requires 120 or 277 voltage option. Double fuse (DF) requires 208 or 240 voltage option.
- If ROAM® node required, it must be ordered and shipped as a separate line item from Acuity Brands Controls.
- Not available with 347 or 480V.
- Requires an additional switched line.
- Dimming driver standard. Not available with 347V, 480V, PER5 or PER7.
- Requires luminaire to be specified with PER option. Ordered and shipped as a separate line item.

## Performance Data

### Lumen Output

Lumen values are from photometric tests performed in accordance with IESNA LM-79-08. Data is considered to be representative of the configurations shown, within the tolerances allowed by Lighting Facts. Contact factory for performance data on any configurations not shown here.

LEDs	Drive Current (mA)	System Watts	Dist. Type	40 K (4000 K, 70 CRI)				
				Lumens	B	U	G	LPW
42C (42 LEDs)	350	49W	SR2	5,128	1	0	1	105
			SR3	5,109	1	0	1	104
			SR4	5,075	1	0	1	104
			SR5	5,403	3	0	1	110
	530	75W	SR2	7,148	2	0	2	95
			SR3	7,121	1	0	2	95
			SR4	7,074	1	0	2	94
			SR5	7,531	3	0	2	100
	700	98W	SR2	8,564	2	0	2	87
			SR3	8,533	2	0	2	87
			SR4	8,476	2	0	2	86
			SR5	9,023	3	0	2	92

### Lumen Ambient Temperature (LAT) Multipliers

Use these factors to determine relative lumen output for average ambient temperatures from 0-40°C (32-104°F).

Ambient	Lumen Multiplier	
0°C	32°F	1.06
10°C	50°F	1.03
20°C	68°F	1.01
<b>25°C</b>	<b>77°F</b>	<b>1.00</b>
30°C	86°F	0.99
40°C	104°F	0.96

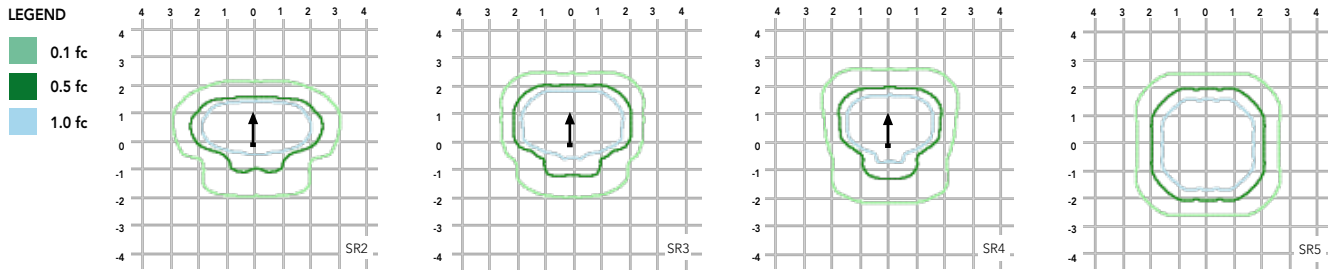
### Projected LED Lumen Maintenance

Data references the extrapolated performance projections for the **MR1 LED 42C 700** platform in a **25°C ambient**, based on 10,000 hours of LED testing (tested per IESNA LM-80-08 and projected per IESNA TM-21-11).

To calculate LLF, use the lumen maintenance factor that corresponds to the desired number of operating hours below. For other lumen maintenance values, contact factory.

Operating Hours	0	25,000	50,000	100,000
Lumen Maintenance Factor	1.0	0.96	0.93	0.85

Isofootcandle plots are considered to be representative of available optical distributions.



## FEATURES & SPECIFICATIONS

### INTENDED USE

Ideal for parking areas, street lighting, walkways and car lots.

### CONSTRUCTION

Single-piece die-cast aluminum housing with nominal wall thickness of .012". Die-cast doorframe has impact-resistant, tempered glass lens (3/16" thick). Doorframe is fully gasketed with one-piece tubular silicone.

### FINISH

Exterior parts are protected by a zinc-infused Super Durable TGIC thermoset powder coat finish that provides superior resistance to corrosion and weathering. A tightly controlled multi-stage process ensures a minimum 3 mils thickness for a finish that can withstand extreme climate changes without cracking or peeling. Standard Super Durable colors include dark bronze, black, natural aluminum and white. Available in textured and non-textured finishes.

### OPTICS

Precision acrylic refractive optics for optimum light distribution through the flat glass lens. Light engines are available in standard 4000K or optional 3000K or 5000K (70 CRI) configurations.

### ELECTRICAL

Light engine consists of 42 high-efficacy LEDs mounted to a metal-core circuit board and aluminum heat sink, ensuring optimal thermal management and long life. Class 1 electronic driver has a power factor >90%, THD <20%, and has an expected life of 100,000 hours with <1% failure rate. Easily-serviceable surge protection device meets a minimum Category C Low operation (per ANSI/IEEE C62.41.2).

### INSTALLATION

Included mounting block and integral arm facilitate quick and easy installation. Stainless steel bolts fasten the mounting block securely to poles and walls. The MR1 LED utilizes the AERIS™ series pole drilling pattern.

### LISTINGS

CSA certified to U.S. and Canadian standards. IP65 rated. **U.S. Patent No. D556,357.**

### BUY AMERICAN ACT

This product is assembled in the USA and meets the Buy America(n) government procurement requirements under FAR, DFARS and DOT regulations. Please refer to [www.acuitybrands.com/resources/buy-american](http://www.acuitybrands.com/resources/buy-american) for additional information.

### WARRANTY

5-year limited warranty. This is the only warranty provided and no other statements in this specification sheet create any warranty of any kind. All other express and implied warranties are disclaimed. Complete warranty terms located at:

[www.acuitybrands.com/support/warranty/terms-and-conditions](http://www.acuitybrands.com/support/warranty/terms-and-conditions).

**Note:** Actual performance may differ as a result of end-user environment and application. All values are design or typical values, measured under laboratory conditions at 25 °C. Specifications subject to change without notice.