

This document, including the design, configuration and mechanical features revealed herein are the sole, confidential and proprietary property of TRU Corporation. Reproduction or use thereof, in whole or part, is prohibited without the prior written consent of TRU Corporation.

REV.	DESCRIPTION	DATE	APPROVED
-	ORIGINAL ISSUE	06/02/11	TRC

ENGINEERING DATA

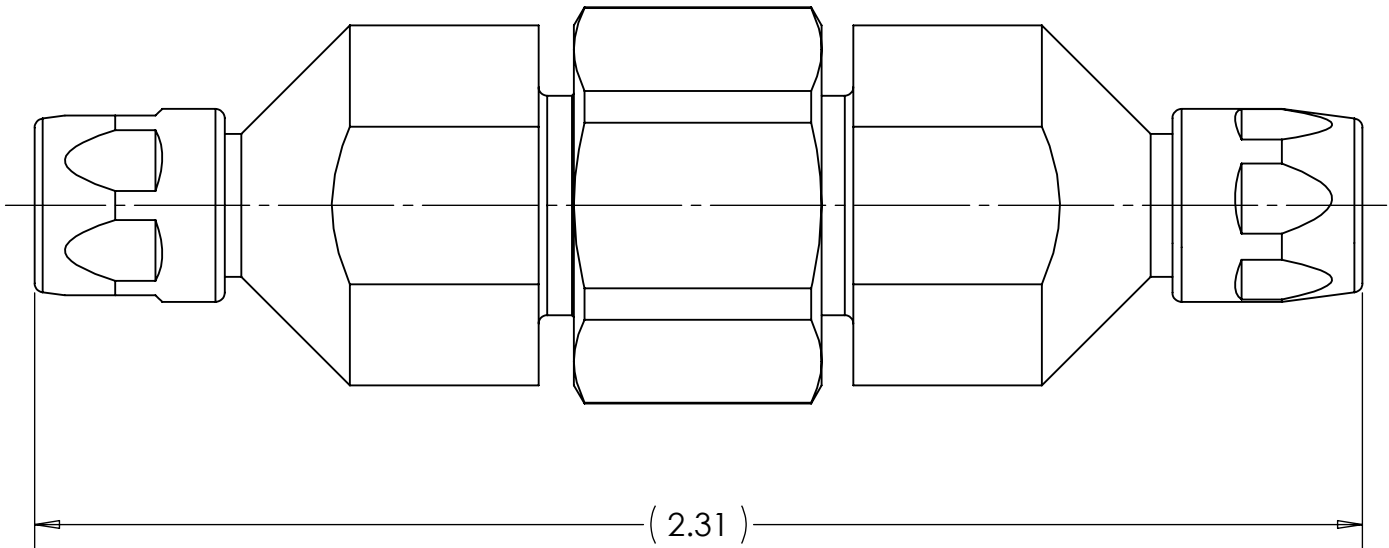
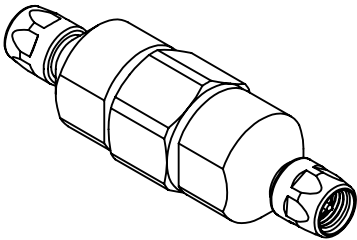
ELECTRICAL:
IMPEDANCE- 50 OHMS NOMINAL
FREQUENCY RANGE- DC TO 18 GHz
VSWR MAX- 1.13 :1

MECHANICAL:
INTERFACE- PER MIL-STD-348

MATERIAL:
INSULATOR-TEFLON, NORYL
CONTACTS- BRASS & BERYLLIUM COPPER
BODIES- STAINLESS STEEL & BRASS
COUPLING NUTS- STAINLESS STEEL


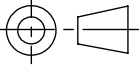
FINISH:
CONTACTS- GOLD PLATED
BODIES- GOLD PLATED
COUPLING NUTS- PASSIVATED

ENVIROMENTAL:
TEMPERATURE: 0° C to +85°C



NOTES:

1. UNLESS OTHERWISE SPECIFIED;
ALL DIMENSIONS ARE REFERENCE ONLY.

MATERIAL	DO NOT SCALE DRAWING	DRAWN JEF	DATE 05-11-11	<div>TRU CORPORATION 245 LYNNFIELD STREET, PEABODY, MA 01960 The Custom Interconnect Leader™</div>		
	UNLESS OTHERWISE SPECIFIED: DIMENSIONS ARE IN INCHES TOLERANCES: FRACTIONS: ±1/64 .XX : ±.01 .XXX: ±.005 ANGLES: ±1/2° MACHINED SURFACES: <div>63/√</div>	ENG APPR. TRC	DATE 06/02/11			
		MFG APPR.	DATE			
		OTHER APPR. AM	DATE 05/17/11	TITLE: <div>CONNECTOR, CO-AXIAL SMA(m) to SMA(m) ADAPTER</div>		
COMMENTS:	THIRD ANGLE PROJECTION <div></div>	SIZE B	DWG. NO. TRU-11177-GGX	REV -		
surface area: sq inch		CAGE CODE: 92180		SCALE: 2:1	SHEET 1 OF 1	
weight: lbs						