

88 5560 80

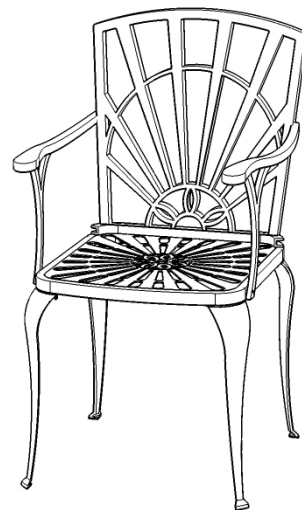
Arm Chair

IMPORTANT NOTE

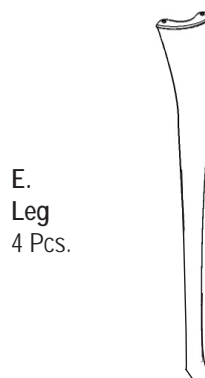
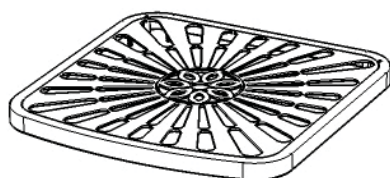
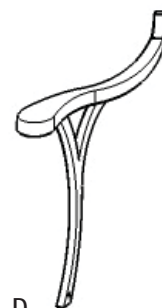
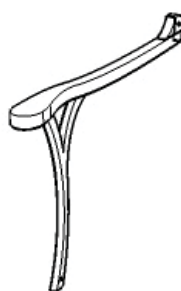
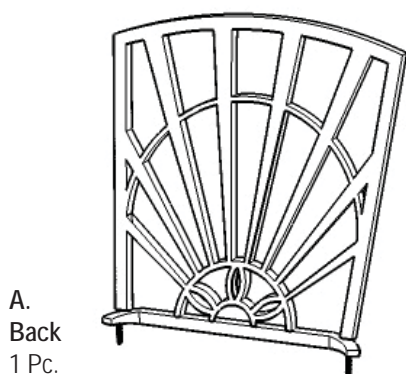
Carefully remove all the parts from the carton and put them individually on a soft cloth to prevent scratches or other damage occurring to the parts.

We have taken great care in the design of this product and request that you carefully and strictly follow our assembly instructions to ensure a completed product as it was designed.

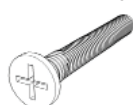
Home
Styles



Part List



Hardware List



Tools required for assembly : **Phillips** screwdriver and **Slotted** screwdriver

Home Styles Consumer Assistance: www.homestyles-furniture.com,
servicedesk@homestyles-furniture.com, 888-680-7460, 877-831-0319

IMPORTANT

- * Please keep Key Wrench in a safe place as you may need to tighten up the Nuts in the future.
- * Use a soft cloth between these parts and the floor.
- * Do not use power tools to assemble and do not overtighten the bolts and nuts.
- * Do not tighten up all the bolts and nuts until each part is properly assembled.

STEP 1

Place Seat (B) upside down on a soft cloth.

Insert Bolts into pre-drilled holes of Seat (B).
(See Figure 1)

Attach Legs (E) to Seat (B) with Flat Washers (large), Spring Washers (large), Nuts (large) and Nuts Caps (large). (See Figure 2)

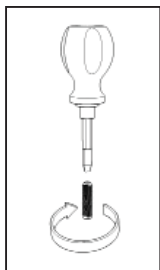


Figure 1

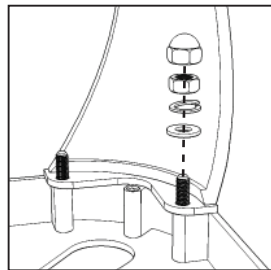
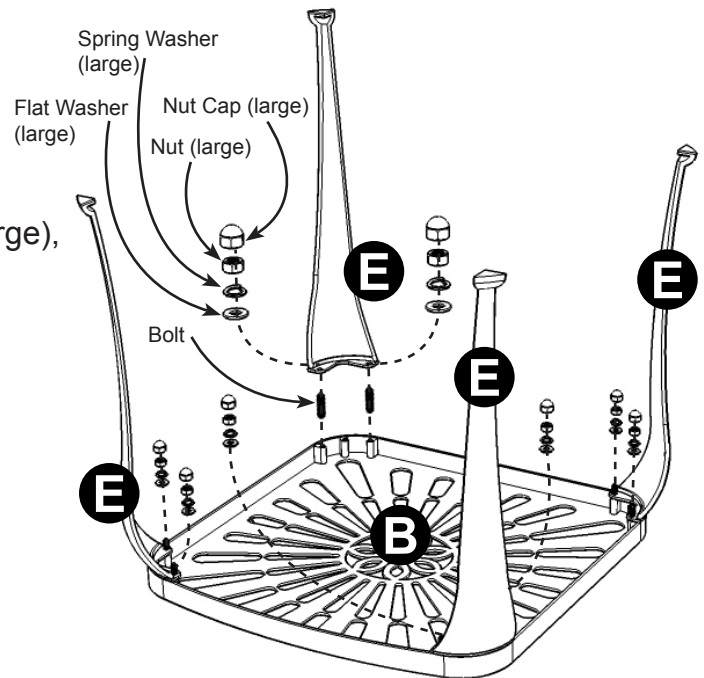


Figure 2



STEP 2

Turn unit over to its' upright position.

Attach Back (A) to unit with Flat Washers (large), Spring Washers (large), Nuts (large) and Nut Caps (large).

Attach Arms (C) and (D) to unit with Tapered Bolts (short), Tapered Bolts (long), Flat Washers (small), Spring Washers (small), Nuts (small) and Nut Caps (small).

