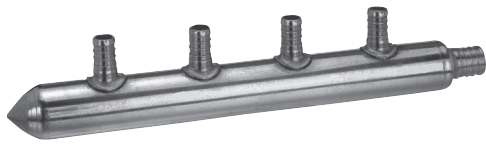
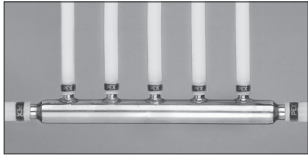


SUPPLY

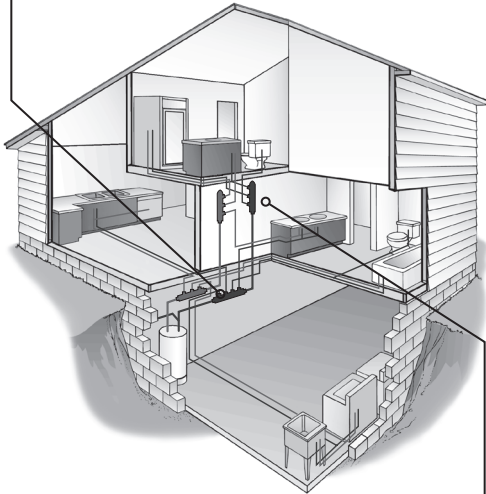


DRAINAGE



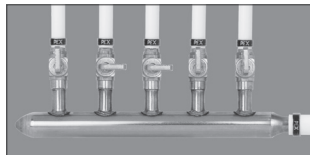
Primary Manifold

SUPPORT



APPENDIX

Secondary Manifold



PowerPEX™ BranchMaster™

Copper Manifolds

- Continuous runs of PEX piping without joints
- Cuts installation time
- Equalized flow to each fixture helps reduce pressure fluctuations which cause scalding
- Great for primary or secondary manifolding
- PEX branches have lead-free solder joints
- Sweat branches are brazed to trunk for safe soldering
- Manifolds with valved branches require access panels and those without valves do not require access panels
- Male sweat branch and trunk end connections are press-fitting compatible
- Copper manifolds are available with or without ball valves or balancing valves and are ideal for hydronic applications



Products marked with this "No Lead" icon comply with national, no lead product material requirements and also comply with NSF 61, which allows the product to contain no more than 0.25% lead.

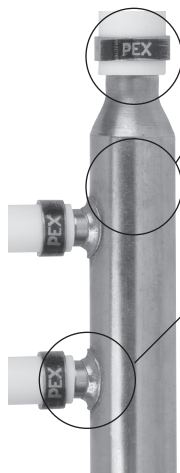


Important Notes About Sioux Chief Male Sweat Fitting

All Sioux Chief male sweat fittings are compatible with press-fitting systems and all push-fitting systems. Push-fitting systems are not compatible with nickel-plated stub outs and stub out elbows.

PowerPEX™ BranchMaster™

Custom Copper Manifolds



Branch Options

- 3/8", 1/2" and 3/4" PEX
- 1/2", 3/4" and 1" male sweat
- 1/2", 3/4" and 1" female sweat
- 1/2", 3/4" and 1" MIP
- 1/2", 3/4" and 1" FIP

Optional distance between branch center

Mini-ball or full port ball valves

Trunk Options

- 3/4" CTS Type L
- 1" CTS Type L
- 1 1/4" CTS Type L
- 1 1/2" CTS Type L
- 2" CTS Type L

Trunk End Options

- 3/4" and 1" PEX
- 3/4", 1", 1 1/4", 1 1/2" and 2" male sweat
- 3/4", 1", 1 1/4", 1 1/2" and 2" female sweat
- 3/4", 1", 1 1/4", 1 1/2" and 2" MIP
- 3/4", 1", 1 1/4", 1 1/2" and 2" FIP
- 1", 1 1/4", 1 1/2" and 2" CPVC
- 3/4", 1", 1 1/4", 1 1/2" and 2" spin closed
- Extended trunk ends
- Full port ball valve

All custom manifolds have a minimum quantity of 25. Custom made parts are not normal stock, and cannot be returned, except in cases of manufacturer's defect.

PowerPEX™

1/2" F1807 PEX Branches

3/4" F1807 PEX × Spin Closed Trunk

- 1" Type L copper trunk
- Branches are 2" on-center
- Great as a secondary manifold



Item No	Branch Qty	Branches	Pkg	Min Qty	Case Qty
672X0390	3	1/2" F1807	B	25	25
672X0390PK	3	1/2" F1807	C*	5	5
672X0490	4	1/2" F1807	B	25	25
672X0490PK	4	1/2" F1807	C*	5	5
672X0590	5	1/2" F1807	B	25	25
672X0690	6	1/2" F1807	B	25	25
672X0690PK	6	1/2" F1807	C*	5	5
672X0790	7	1/2" F1807	B	25	25
672X0890	8	1/2" F1807	B	25	25
672X0990	9	1/2" F1807	B	25	25
672X1090	10	1/2" F1807	B	25	25
672X1290	12	1/2" F1807	B	25	25

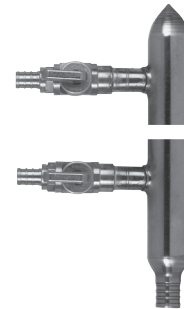


PowerPEX™

1/2" F1807 PEX Ball Valve Branches

3/4" F1807 PEX × Spin Closed Trunk

- 1" Type L copper trunk
- Branches are 2" on-center



Item No	Branch Qty	Branches	Pkg	Min Qty	Case Qty
672XV0490	4	1/2" F1807 ball valve	B	1	10
672XV0490PK	4	1/2" F1807 ball valve	C*	5	5
672XV0590	5	1/2" F1807 ball valve	B	1	10
672XV0690	6	1/2" F1807 ball valve	B	1	10

PowerPEX™

1/2" F1807 PEX Branches

3/4" F1807 PEX × Spin Closed Extended Trunk

- 1" Type L copper trunk
- Branches are 2" on-center
- Extended ends can be easily converted to 1" male sweat by cutting off the reduction or spin closed end, leaving 5" from PEX branch



Item No	Branch Qty	Branches	Pkg	Min Qty	Case Qty
672X0490EE	4	1/2" F1807	B	10	10
672X0690EE	6	1/2" F1807	B	10	10

