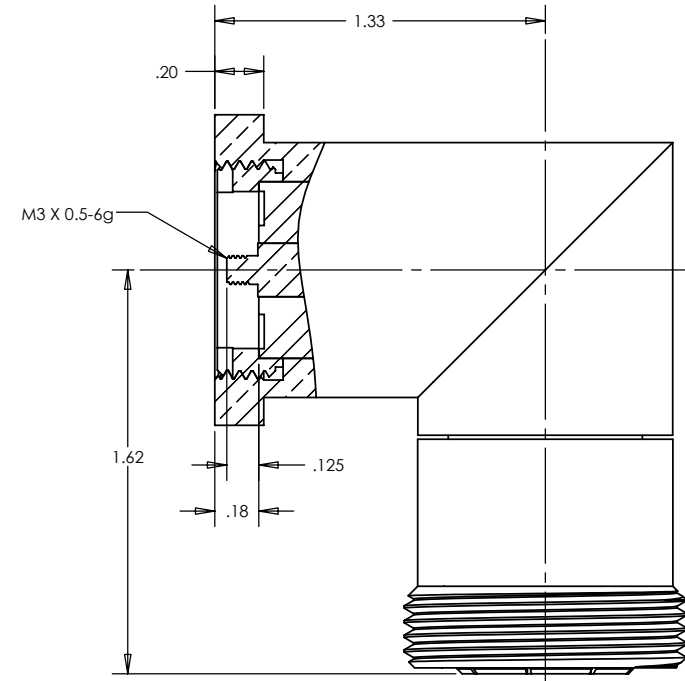
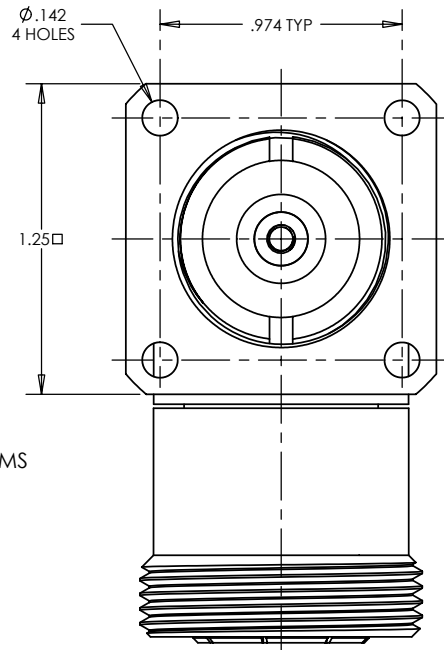


This document, including the design, configuration and mechanical features revealed herein are the sole, confidential and proprietary property of TRU Corporation. Reproduction or use thereof, in whole or part, is prohibited without the prior written consent of TRU Corporation.

REV.	DESCRIPTION	DATE	APPROVED
-	ORIGINAL ISSUE	10/22/04	WWW



#### ENGINEERING DATA:

##### ELECTRICAL:

IMPEDANCE: 50 OHMS NOMINAL  
FREQUENCY RANGE: DC TO 5 GHZ  
DIELECTRIC WITHSTANDING VOLTAGE: 4,000 VOLTS RMS

##### MECHANICAL:

INTERFACE: 7-16(f) PER IEC 169-4, DIN 47223

##### MATERIAL:

INSULATORS: TEFLON  
FEMALE CONTACT: BERYLLIUM COPPER  
CONTACT FINGERS: PHOSPHOR BRONZE  
OTHER METAL PARTS: BRASS

##### FINISH:


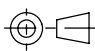
FEMALE CONTACT: SILVER PLATED  
CONTACT FINGERS: SILVER PLATED  
OTHER METAL PARTS: NICKEL PLATED

##### ENVIRONMENTAL:

TEMPERATURE RANGE: -65°C TO 165°C

##### NOTES:

1. UNLESS OTHERWISE SPECIFIED; ALL  
DIMENSIONS ARE REFERENCE ONLY.

MATERIAL	DO NOT SCALE DRAWING	DRAWN Warren Whitten	DATE 10/21/04	 <b>TRU CORPORATION</b> 245 LYNNFIELD STREET, PEABODY, MA 01960 The Custom Interconnect Leader™
	UNLESS OTHERWISE SPECIFIED: DIMENSIONS ARE IN INCHES	ENG APPR. AM	DATE 10/22/04	
	TOLERANCES: FRACTIONS: $\pm 1/64$ .XX: $\pm .01$ .XXX: $\pm .005$ ANGLES: $\pm 1/2^\circ$ MACHINED SURFACES:	MFG APPR.	DATE	
	63/	OTHER APPR.	DATE	
COMMENTS:	THIRD ANGLE PROJECTION			TITLE: CONNECTOR, COAXIAL, RF 7-16(f), RECEPTACLE, PANEL, R/A
path: S:\SW JOBS\TRU-6906\				SIZE <b>B</b>
surface area: sq inch	DWG. NO. TRU-6906-01			REV -
weight: lbs	CAGE CODE: 92180			SCALE: 2:1
				SHEET 1 OF 1