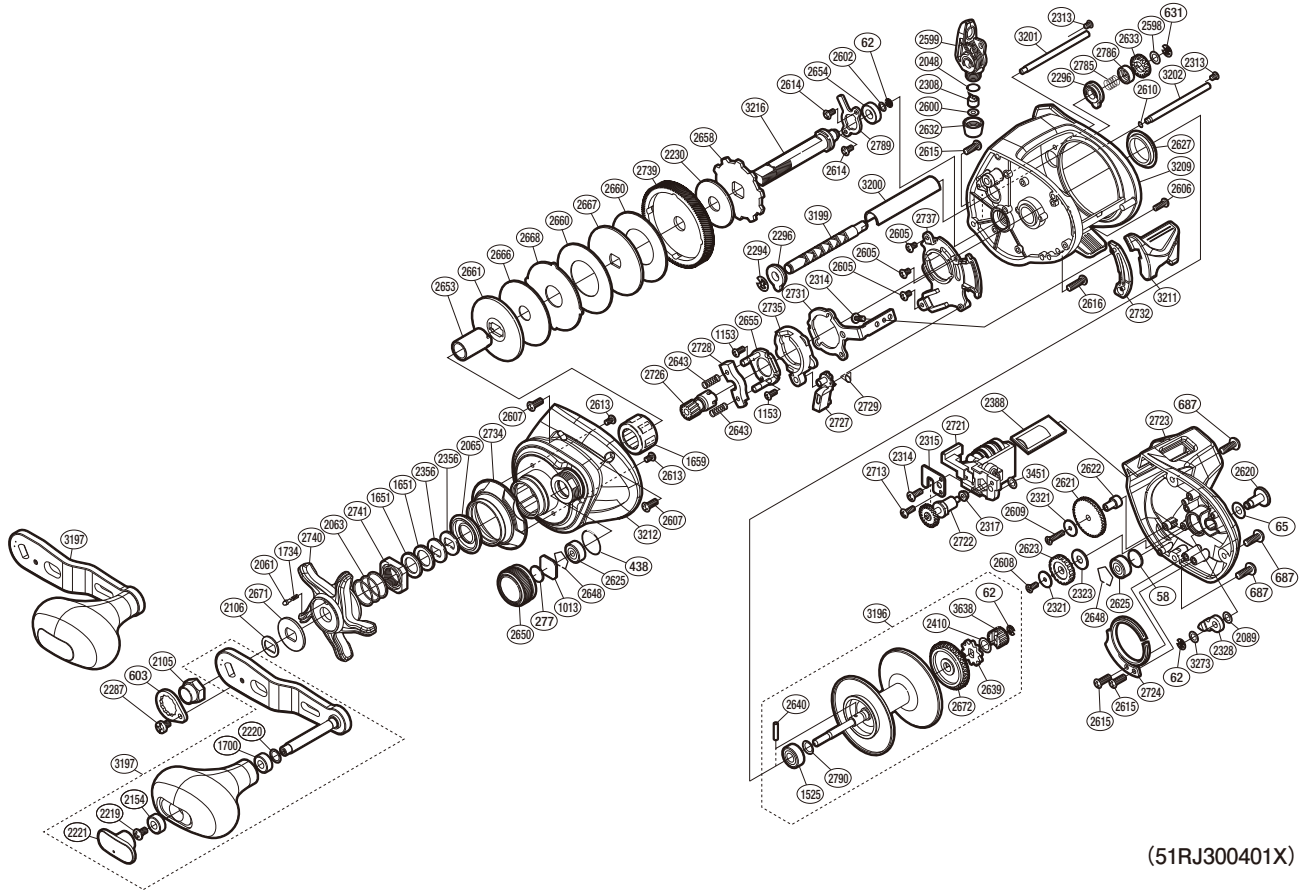


SHIMANO

TEKOTA

TEKA401HGLC



(51RJ300401X)

#	Part No.	Description	#	Part No.	Description	#	Part No.	Description
58	10GEU	Spacer B	2356	109F5	Drag Spring Washer	2668	1024F	Eared Washer
62	105NK	E Lock	2388	1000T	Counter Lens Assembly	2671	10J22	Click Plate Retainer
65	104H2	Spacer A	2410	10S0Q	Washer	2672	10233	Counter Gear A
277	10896	Cast Control Spacer	2598	10S42	Washer	2713	10TBS	Screw
438	108WK	O Ring	2599	100UY	Line Guide Assembly	2721	10RUK	Counter Unit Assembly
603	10LMC	Handle Nut Plate	2600	1003S	Washer	2722	10RUU	Counter Gear Assembly
631	105NC	E Lock	2602	1003V	Washer	2723	10SC2	Right Side Plate
687	103GP	Screw	2605	10SUT	Screw	2724	13X9E	Click Spring
1013	1085F	Spool Tension Spacer	2606	10MT9	Screw	2726	10SMW	Pinion Gear
1153	10LVJ	Screw	2607	101GR	Screw	2727	1021U	Clutch Pawl
1525	105CA	Ball Bearing	2608	100UL	Screw	2728	1046Y	Yoke
1651	10J1N	Star Drag Spacer	2609	10SUS	Screw	2729	1021T	Clutch Pawl Spring
1659	10F37	Roller Clutch Bearing	2610	108WW	O Ring	2731	1021Z	Clutch Plate
1700	104UJ	Handle Knob Bushing	2613	10LA3	Screw	2732	10SC3	Clutch Bar Guide B
1734	10BT2	Click Spring	2614	10LCT	Screw	2734	10224	Clutch Button Attachment
2048	108WQ	O Ring	2615	10LFN	Screw	2735	10225	Clutch Cam
2061	10MFC	Click Pin	2616	10LHY	Screw	2737	10227	Clutch Guard
2063	10A70	Star Drag Spring	2620	101H9	Click Button	2739	10DSM	Drive Gear
2065	10C69	Roller Clutch Water Proof	2621	10238	Idle Gear B	2740	10SBJ	Star Drag
2089	10GHP	Washer	2622	10231	Idle Gear B Support	2741	10SRQ	Star Drag Nut
2105	10R3C	Handle Nut	2623	101TN	Idle Gear D	2785	10SXP	Worm Shaft Spring
2106	107QN	Drive Shaft Shield	2625	105C2	Ball Bearing	2786	10RVK	Worm Shaft Cam
2154	10EU0	Handle Knob Bushing	2627	1024L	Frame Center Seal	2789	10RVE	Drive Shaft Retainer
2219	10LFA	Screw	2632	101HC	Pawl Cap	2790	10SYU	Spring
2220	10HEP	Washer	2633	101TJ	Idle Gear C	3196	10S1P	Spool Assembly
2221	101B8	Handle Knob Seal	2639	101HA	Click Gear	3197	10019	Handle Assembly
2230	1025A	Drag Washer	2640	10MD1	Spool Clutch Pin	3199	10SDR	Worm Shaft
2287	10LLU	Screw	2643	104BC	Yoke Spring	3200	10SPH	Level Wind Guard
2294	10KHG	E Lock	2648	1054D	Bearing Retainer	3201	10SDK	Stabilizer Bar A
2296	100GP	Worm Bushing A	2650	10234	Cast Control Cap	3202	10SDL	Stabilizer Bar B
2308	10BHQ	Line Guide Pawl	2653	10250	Roller Clutch Inner Tube	3209	1003J	Frame Assembly
2313	10MPD	Screw	2654	10BQ7	Drive Shaft Bushing	3211	10SJR	Clutch Button
2314	10LCL	Screw	2655	10QVM	Clutch Cam Retainer	3212	101AU	Left Side Plate
2315	100H8	Counter Frame Plate	2658	10D73	Anti-Reverse Ratchet	3216	100NX	Drive Shaft
2317	10CYA	Bushing	2660	1025D	Drag Washer	3273	100K0	Washer
2321	10DT6	Idle Gear B Spacer B	2661	1025E	Key Washer	3451	10RKQ	Washer
2323	101JK	Idle Gear B Spacer A	2666	1024D	Drag Washer	3638	10TCP	Idle Gear A
2328	10T84	Click Pawl	2667	1024E	Key Washer			

Please note that the number of adjusting washers may not be the same as shown in the exploded views.
(Adjustment will vary with each individual product.)

(230908)_006