

XM14/17 SERIES



HILLYARD
The Cleaning Resource®

TRIDENT®

Better Built. Better Equipment.

Better Built. Better Equipment.

Our Trident Brand of equipment starts from the ground up - at a place where intelligent design intersects with innovative technology and exceptional engineering to deliver superior cleaning equipment. Cleaning equipment that lowers your total cost of ownership, reduces your cost to clean and improves cleaning results. It's what you expect out of your equipment investment, and it's what we deliver. We're Hillyard, The Cleaning Resource, since 1907.



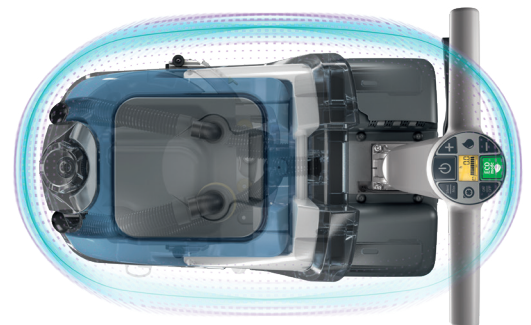
Intelligent
Design



Exceptional
Engineering



Innovative
Technology



The outer body surrounds the internal structure and mechanical parts, protecting them from impact.



Designed to Last a Lifetime

Aluminum Squeegee Chassis and Corrosion Resistant Frame Coating

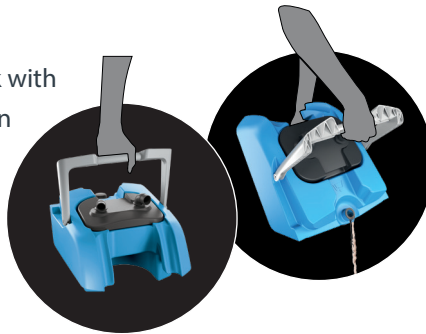
- Corrosion Resistant
- Sturdy and Durable
- Light Weight
- Precision Fit



Ease-Of-Use

Smart Solutions Speed Up Routine Maintenance Operations

Easily empty recovery tank with sturdy, built-in handles.



Use the XM17's integrated solution hose to easily empty the recovery tank.



Yellow Color-Coded Parts

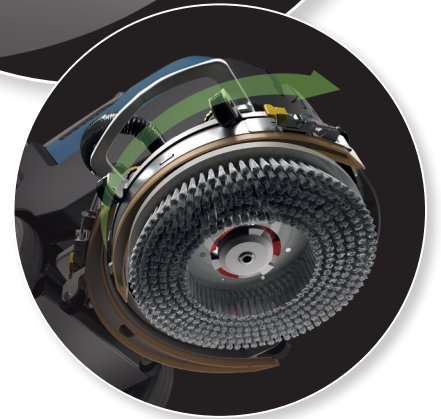
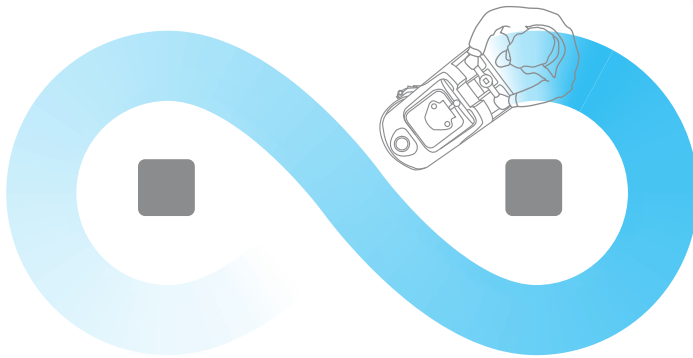
Parts that should be cleaned daily are color-coded in yellow. This saves time and makes sure your scrubber is kept in perfect condition at all times.

Better Results



Parabolic Squeegee

The squeegee is parabolic, it moves along with the machine whether making turns or moving straight leaving the floor dry without puddling at the turns.



Center-feed Cleaning Solution

The pump supplies cleaning solution with a constant flow from the center of the brush, ensuring uniform cleaning with the right amount of water.





More Power



Pad Pressure That Gets Results

High pad/brush pressure to easily tackle even the most stubborn dirt and soils on any type of hard-surface flooring.

- XM17 - 88 Pounds
- XM14 - 66 Pounds



Heavy-duty Motor

Motor power matched to the professional cleaning tasks at hand.

- XM17 - 500 Watts
- XM14 - 400 Watts



Ergonomically Engineered

Adjustable Handlebars for Comfortable Use and Compact Storage





Better Built. Better Equipment.



Intuitive Use

The small touchscreen enables the user to start working without delay or extended training sessions. Save time every day: to start cleaning, just press the Eco mode and go.



Onboard Battery Charging

Charge wherever a simple 110V outlet is available.

The access door to the battery compartment is designed to open completely and act as a support: this makes replacement easier.

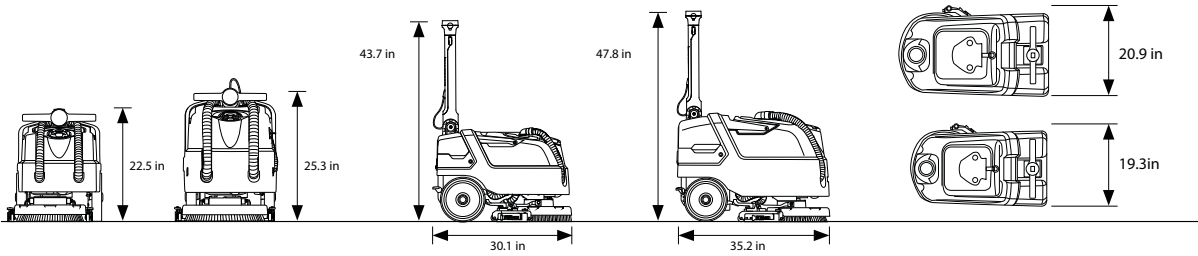


ECO Mode For Conservation

Activate ECO Mode for lower decibels and to help conserve water, detergent and energy by using only the quantities needed and nothing more while still getting the cleaning performance required.



Specifications



Specifications		XM14SC Pro	XM17SC Pro
Hillyard Item Number		HIL56030	HIL56031
Cleaning Path	In	14	17
Squeegee Width	In	17	20
Disc/Brushes	(No.) In	(1) 14	(1) 17
Solution Tank	Gal	4	6.5
Recovery Tank	Gal	4.5	7
Supply/Traction	V	24/Brush Assist	24/Brush Assist
Acoustic Level (Iso 11201)	Db (A)	~62	~69
Brush Motor(s)	(No.) V/W	(1) 24/440	(1) 24/500
Brushes RPM	RPM/Min.	197	197
Brush Pressure	Lb	66	88
Forward Speed	MPH	0 - 1.86	0 - 1.86
Gradeability	%	2	2
Productivity (Theoretical)	Sq.ft/Hr	14,000	17,200
Machine Dimensions (L,H,W)	In	30.1, 43.7, 19.3	35.2, 47.8, 20.9
Charging System		Onboard	Onboard
Machine Weight (Without Battery)	Lb	115	150
Contents		1 - Machine 1 - Pad Holder 1 - Charging Cord 1 - Owners Kit	1 - Machine 1 - Pad Holder 1 - Charging Cord 1 - Owners Kit

Squeegee Replacement Guide		XM14SC Pro	XM17SC Pro
Front & Rear Squeegee Kit		HIL229850	HIL229881

Brush and Pad Guide		XM14SC Pro	XM17SC Pro
Brush(es) - Soft, 0.3MM PPL, Blue		HIL451751	-
Brush(es) - Medium, 0.6MM PPL, White		HIL451752	-
Brush(es) - Stiff, 0.9MM PPL, Black		HIL451753	HIL451782
Brush(es) - Abrasive, 80 Grit, Gray		HIL451754	HIL451783
Pad - Red		HIL42214	HIL42217

Battery Recommendations - Sold Separately		Discover Energy	Fullriver Battery
Type		AGM	AGM
Quantity Required		2	2
Size		12 V / 33 Ah	12 V / 55 Ah
Dimensions (L,W,H - Inches)		7.7 x 5.1 x 6.3	9.02 x 5.43 x 8.35
Weight (Each), Lbs.		23.1	39
Hillyard Item Number		DIEEVU1AA	FBMDC5512



Better Built. Better Equipment.



PO Box 909
St. Joseph, MO 64502
www.hillyard.com

LIT-XM1417-0721

Subject to change without notice.