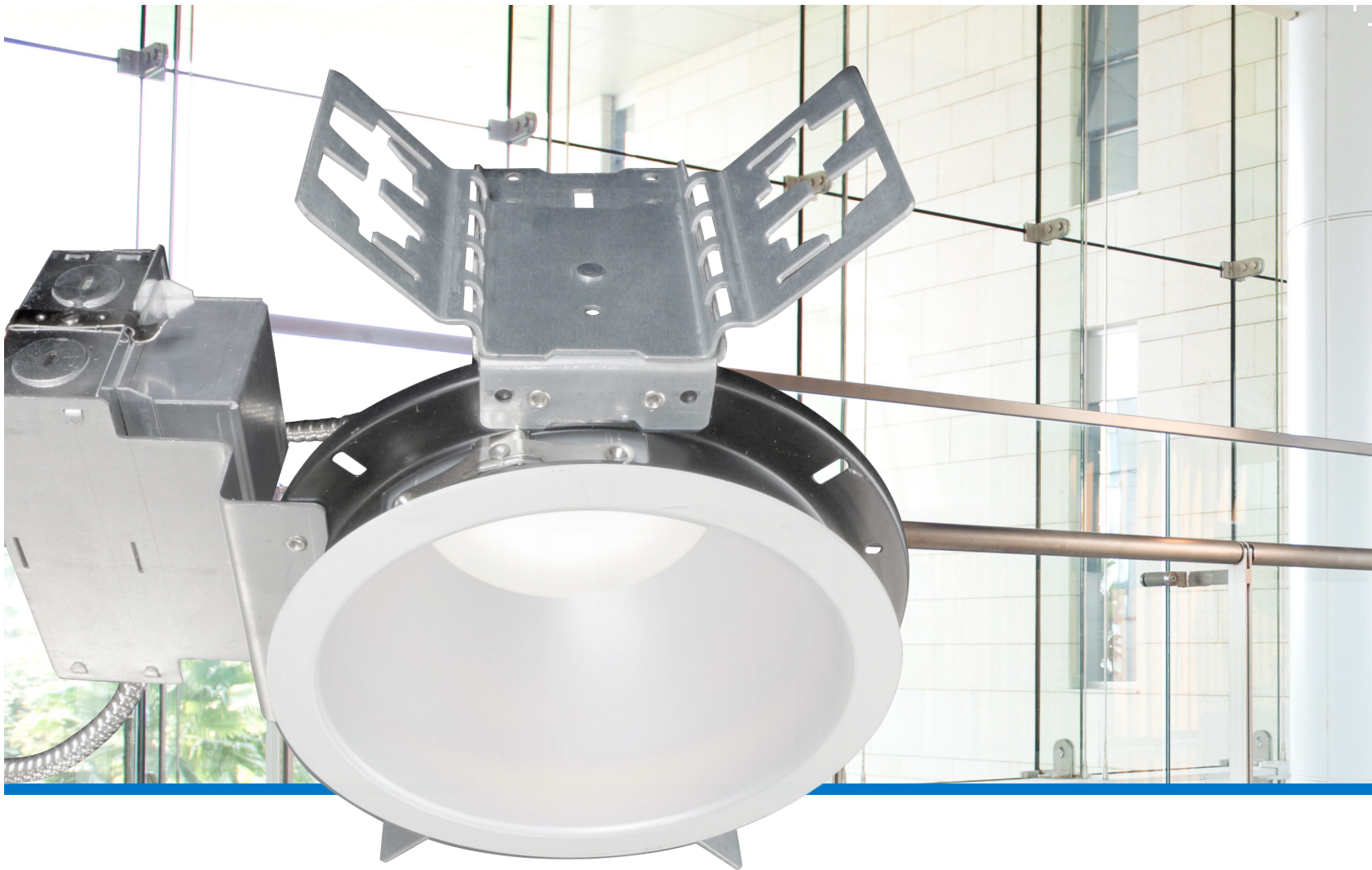




ADL Series

LED Architectural Downlights

NICOR[®] | **LED**



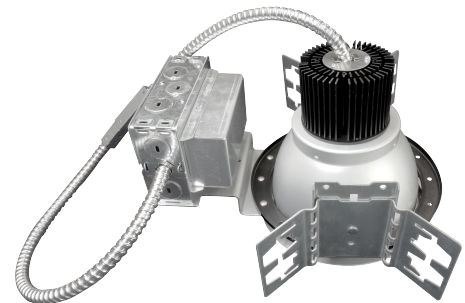
ADL Series

Architectural **LED** Downlights

NICOR's architectural LED downlights are energy efficient and environmentally responsible, allowing you to light larger commercial spaces with peace of mind. The ADL offers high efficacy and exceptional color rendering, making this luminaire an ideal choice in places such as corridors, conference rooms, lobbies, and large offices. The ADL is available in 3500K, 4000K, and 5000K color temperatures with lumen options to fit any project

FEATURES

- Durable galvanized steel frame, with architectural mounting bracket
- Aluminum heat sink routes heat away from electrical components
- Highly reflective optical cone and textured diffuser create a uniform distribution of light
- Utilizes high performing LED's with 88 CRI
- Driver delivers full-range dimming from 0 - 10V
- External driver ensures steady performance and long lifespan
- Operating temperature rating of 0°F to 120°F (-18°C to -49°C)
- 120-277V Input voltage
- TM-21 Projected L70(10K) life greater than 50,000 hrs
- LM-80 testing performed in accordance to IESNA standards
- Satin reflector with white trim ring
- Butterfly-style architectural mounting brackets accept C-channel or flat bar hangers as well as 1/2" EMT for tie-down to ceiling grid
- 5 year warranty





Equivalency Chart



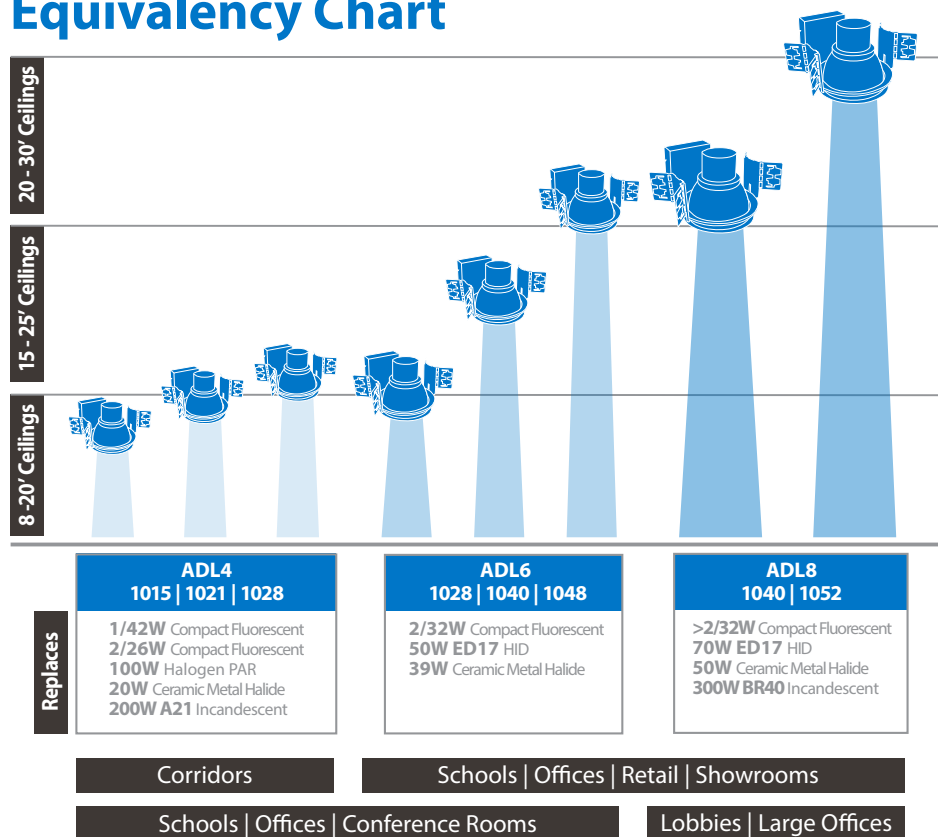
ADL4



ADL6

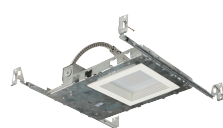


ADL8

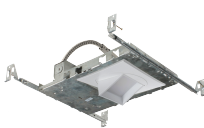


DLQ5 | DLQ5-MA | ADL | CDL | CDR

At a glance commercial downlight comparison



DLQ5



DLQ5-MA



ADL Series



CDL Series



CDR Series

NEW CONSTRUCTION

RETROFIT

	NEW CONSTRUCTION		RETROFIT		
Size Options	5"	5"	4" 6" 8"	6" 8"	4" 6" 8" 10"
Trim Options	White, Baffle	White	Satin	Specular, White	Satin
Lumen Options	1100Lm	1100Lm - 1200Lm	1000Lm - 3900Lm	2000Lm - 3200Lm	1500Lm - 5200Lm
CCT Options	30K	30K 40K 50K	35K 40K 50K	27K 30K 35K 40K 50K	35K 40K 50K
Watts	16W	16W	15W - 52W	22W - 49W	18W - 54W
Lumens Per Watt	68	69-83	66 - 75	90 - 65	83 - 96
Mounting Height	8-12ft	8-12ft	8 - 30ft	8 - 30ft	8 - 30ft
Projected Lifetime	>46,000 hrs	>46,000 hrs	>50,000 hrs	>75,000 hrs	>36,000 hrs
Dimming	TRIAC	TRIAC	0-10 VDC	0-10 VDC	0-10 VDC
Warranty	5 Year	5 Year	5 Year	5 Year	5 Year
Certifications					