



CHILDREN AT THE WELL OUTDOOR WATER FOUNTAIN WITH LED LIGHTS DW-34035

Review all assembly and care information before using this product.
Save this manual for future reference.

Select a smooth, level surface to place the fountain.
Assemble components on a soft, clean surface to avoid damaging the finish.



Inspect packaging to ensure all parts are accounted for before disposing of packing materials.
Save the packing slip.



**Cascading
water sounds**



NOTE: As a result of the manufacturing process, there may be loose pieces of casting materials inside the fountain.

**Over time, the paint finish may gradually mellow in color;
this is part of the natural aging process and is not cause for return.**

• • • SunnydazeDecor.com • • •

Thank you for choosing Sunnydaze Decor. We stand behind our brand and the quality of the items we sell. Replacement parts or products can be requested with the 1-year warranty period. Proof of purchase must be provided. This includes the date of the purchase as well as photos of the product defect. Photos are used to determine the cause of the defect and to provide future quality control. The request will be reviewed, and replacement pieces will be sent at our discretion. For warranty information, visit <https://tiny.cc/SunnydazeWarranty>

If you have any questions, comments or concerns, feel free to contact us by phone at 833-982-1977, by email: customerservice@sunnydazedecor.com, or via our contact us page at <https://tiny.cc/SunnydazeContact>

Purchase Date: ___ / ___ / ___ Order/Customer Reference Number: _____
Write down the purchase date and order information to help expedite customer service inquiries.

PREPARATION:

Before beginning assembly, read all warnings and safety precautions.

⚠ WARNINGS & CAUTIONS:

WARNINGS:

To reduce the risk of electric shock, only connect the pump to a Ground Fault Circuit Interrupter (GFCI) outlet.

Do not exceed the voltage shown on the pump.

Always disconnect the pump from the power source before performing any maintenance or work on the pump, light(s) or any fountain fittings.

Inspect the pump and power cord for damage before installation and maintenance. If damage is found, the pump should be replaced.

CAUTIONS:

Use a proper power source as indicated on the pump label. Keep the cords away from high temperatures and heat sources.

Do not lift the pump by its power cord.

Keep the fountain out of reach of children.

Do not let the pump run dry. The pump must be completely submerged for proper operation and cooling.

Do not pump heated liquids.

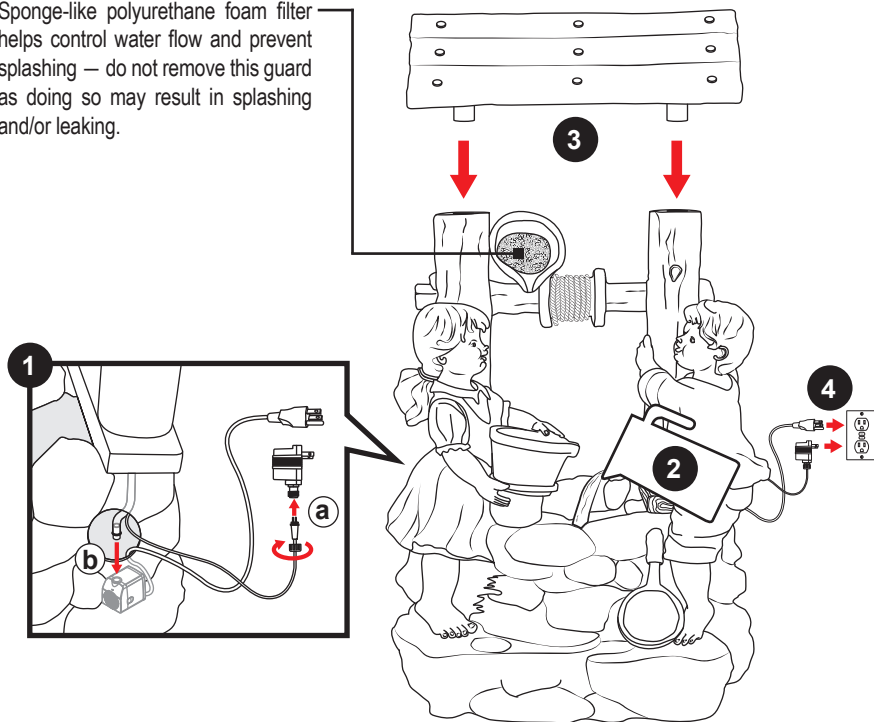
Operate with freshwater only. Avoid heavily chlorinated water and water with high PH levels.

Do not use harsh chemicals such as bleach to clean the fountain or pump.

ASSEMBLY:

NOTE: The water tubing is built into the fountain. Take care when handling the water tube; detaching the water tube from the fountain will damage the fountain and void the product warranty.

Sponge-like polyurethane foam filter helps control water flow and prevent splashing — do not remove this guard as doing so may result in splashing and/or leaking.



1. Locate the built-in water tube and light cable inside the fountain.
 - a) Extend the LED light cable through the hole in the back of the fountain and connect the AC adapter.
 - b) Connect the pump to the water tube and place the pump inside the fountain and run the power cord through the hole.
2. Fill the fountain with enough water to keep the pump fully submerged during operation, approximately 7 gallons (26.5L).
3. Place the roof on the top of the fountain.
4. Plug both power cords into properly grounded GFCI outlets.

Note: When first used, there may be air in the pump. It may take several minutes for trapped air to escape, allowing water to flow.

! IMPORTANT INFORMATION !

USE & CARE

- Recommended for outdoor use only. Some splashing is normal; adjust the flow rate on the pump if the water rate is too high.
- Check the water level frequently to ensure the pump remains fully submerged; never allow the pump to run dry as it will burn out the motor.
- Only use water in this fountain; distilled water will help prevent mineral buildup but is not required.
- Periodically change the water to keep the water, fountain and pump clean. Remove scale and build-up regularly.
DO NOT use harmful additives such as bleach, chlorine, etc.
DO NOT use anything abrasive to scrub the fountain.
DO NOT use a pressure washer.
- Always shut off the power supply before cleaning and maintaining the fountain and the recirculating pump.
- Take care when handling the pump; only pick it up by the body of the pump, never the power cord.
- During freezing weather, drain the fountain, disconnect the pump and store indoors; allowing ice to form will damage the fountain.

WARNING: THE ONE-YEAR WARRANTY DOES NOT COVER DAMAGES OR DEFECTS CAUSED BY THE APPLICATION OF CHEMICAL TREATMENTS, PROTECTIVE COATINGS, TOUCH-UP PAINT, OR CLEANING PRODUCTS.

TROUBLESHOOTING

- Ensure that the pump is fully submerged and add water to the basin as needed.
- Check to make sure the power outlet is working; consult a certified electrician if in doubt about electrical connections.
- Check the pump and tubing for obstructions.
- Check the flow control on the body of the pump as it may need to be adjusted to achieve the desired flow rate.
- If the light is not working, ensure the cables are fully connected, and the seals are adequately tightened (do not over-tighten).
- If water is not flowing within moment of being plugged in or the pump is loud, there may be air trapped inside the pump filter. Unplug the power supply for a few moments and plug it back in. You may also try gently tapping the pump with your finger to release trapped air.

Any modification to the product or failure to follow recommended care will void the product warranty.

! WARNING: Manufacturer and seller expressly disclaim any and all liability from personal injury, property damage or loss, whether direct or indirect, or incidental, resulting from the incorrect attachment, improper use, inadequate maintenance, or neglect of this product.