

NOTES: UNLESS OTHERWISE SPECIFIED

1. MATERIAL SPECIFICATIONS:

BODIES AND COUPLING NUT: BRASS PER ASTM B16
CONTACT AND FERRULE: COPPER ALLOY
INSULATOR: TEFLON PER ASTM D1710
RETAINING RING: PHOSPHOROUS BRONZE
GASKET: SILICONE RUBBER
SHRINK TUBE: ADVESIVE LINED POLYOLEFIN

2. FINISH SPECIFICATIONS:

BODIES: TRI-METAL OVER COPPER PER ASTM B734.
COUPLING NUT AND FERRULE: TRI-METAL OVER COPPER PER ASTM B734.
CONTACT: GOLD PER ASTM B488 OVER COPPER PER ASTM B734.

3. ELECTRICAL SPECIFICATIONS:

FREQUENCY RANGE: DC-11 GHz
VSWR: 1.2 MAX TO 8GHz
1.25 MAX 8-11 GHz

4. INTERFACE IN ACCORDANCE WITH MIL STD 348.

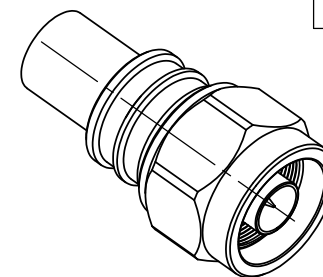
5. CRIMP USING .429" HEX.

6. FOR GENERAL SERIES SPECIFICATIONS, SEE SD60-0000.

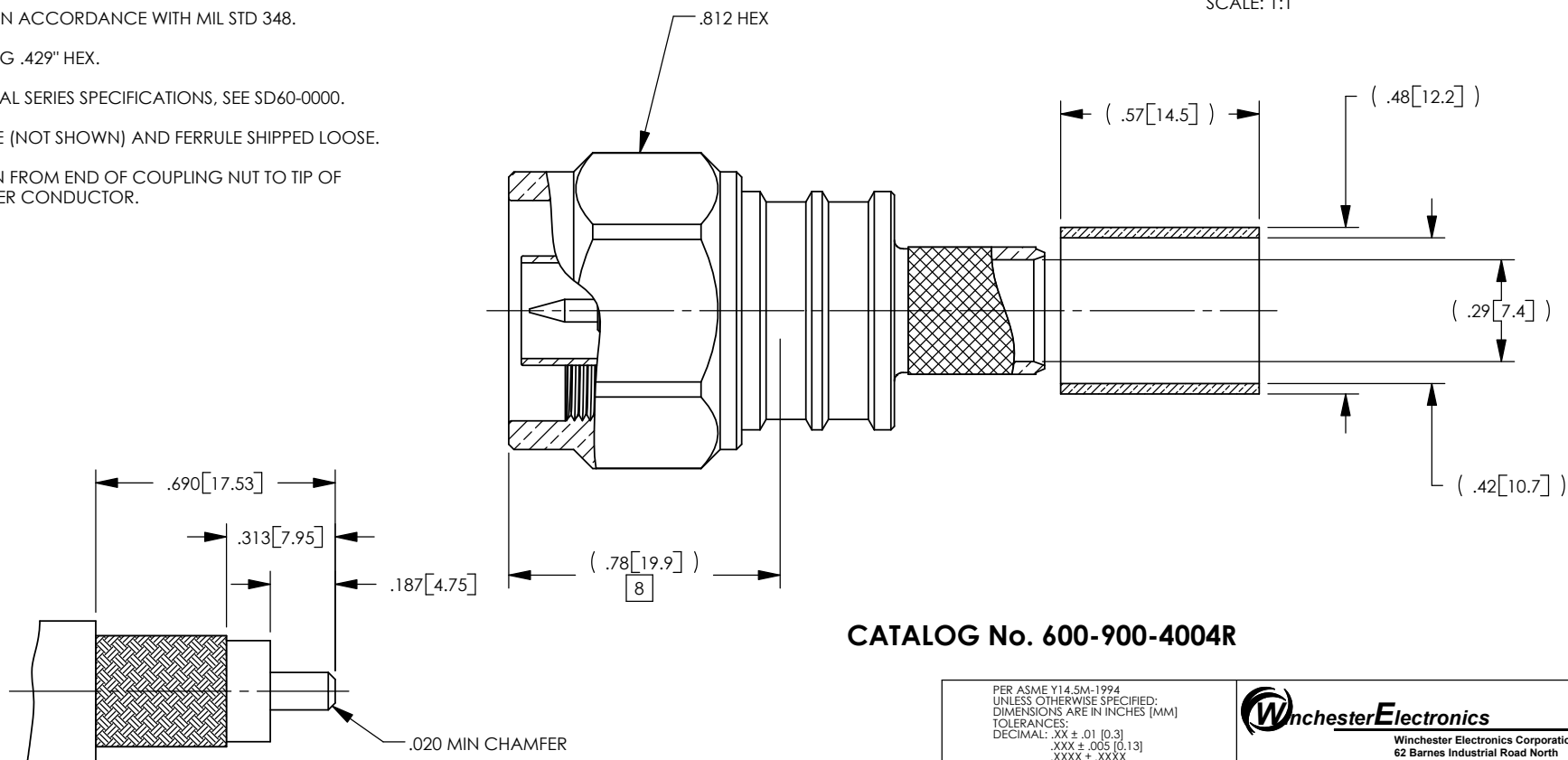
7. SHRINK TUBE (NOT SHOWN) AND FERRULE SHIPPED LOOSE.

8. DIMENSION FROM END OF COUPLING NUT TO TIP OF CABLE INNER CONDUCTOR.

REV	DESCRIPTION	BY DATE	APPD
B	ECR-ER1053	DW 07/17/06	CIC





ISOMETRIC VIEW
SCALE: 1:1



RECOMMENDED CABLE TRIM DIMENSIONS

CATALOG No. 600-900-4004R

PER ASME Y14.5M-1994 UNLESS OTHERWISE SPECIFIED: DIMENSIONS ARE IN INCHES (MM) TOLERANCES: DECIMAL: .XX ± .01 [0.3] .XXX ± .005 [0.13] .XXXX ± .XXXX ANGLES: ± 2° SCALE: 2:1				 Winchester Electronics Winchester Electronics Corporation 62 Barnes Industrial Road North Wallingford, Connecticut 06492					
CUSTOMER DRAWING				 N MALE STRAIGHT PLUG, CRIMP, POINT AND SHOOT FOR LMR-400					
DRAWN		DATE		APPROVED		DATE			
PSM		10/21/05		RAF		11/01/05			
APPROVED		DATE		APPROVED		DATE			
WPM		11/10/05		XXX		XX/XX/XX			
A		SD600-900-4004R				SHT 1 OF 1		REV B	