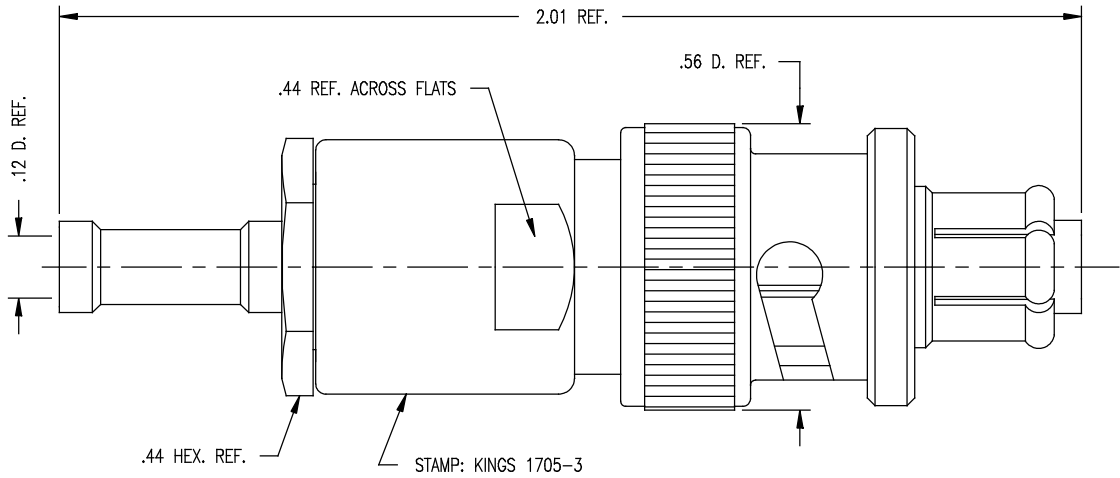


DASH NO.	M CODE	MADE FROM
----------	--------	-----------

GSD

1705-3

REVISIONS	
ISSUE	CHANGES
5	CN 33334 E REDRAWN WJM 08/28/91



- NOTES:
- FOR USE WITH RG-174, 179A, 179B, 187, 187A, 188 & 188A/U CABLE.
 - FOR CABLING INSTRUCTIONS SEE V-59-39-12 (CP-447).
 - FOR CABLE TRIMMING USE KTJ-103 & KTD-141.
 - FOR CRIMPING USE DIE KTH-2071.
 - MATERIALS:
 - INSULATORS: TEFLON, ASTM-D-1457
 - K-GRIP SLEEVE: COM. BRONZE TUBING, ALLOY 220
 - GASKET: SILICONE RUBBER, ZZ-R-765
 - CENTER CONTACT } BER. COPPER, ASTM-B-196
 - OUTER CONTACT }
 - SPRING WASHER }
 - ALL OTHER METAL PARTS: BRASS, ASTM-B16
 - FINISHES:
 - CENTER CONTACT: HARD GOLD PLATE, PER MIL-G-45204
 - ALL OTHER METAL PARTS: KINGS TARNISH RESISTANT FINISH (TR-5)
 - ELECTRICAL CHARACTERISTICS:
 - OPERATING VOLTAGE: 3500 VRMS
 - 5000 VOLTS DC

WJM1307

SCALE 4:1	
APPROX SURFACE AREA	
USED ON	
REF: N.B.S. ND-545C	
PLUG, SHV	
DRAWN WJM	DATE 08/28/91
DESIGN MJB	DATE 09/04/91
APPR.	DATE

KINGS
ELECTRONICS CO., INC.
TUCKAHOE, NEW YORK 10707

GSD

1705-3