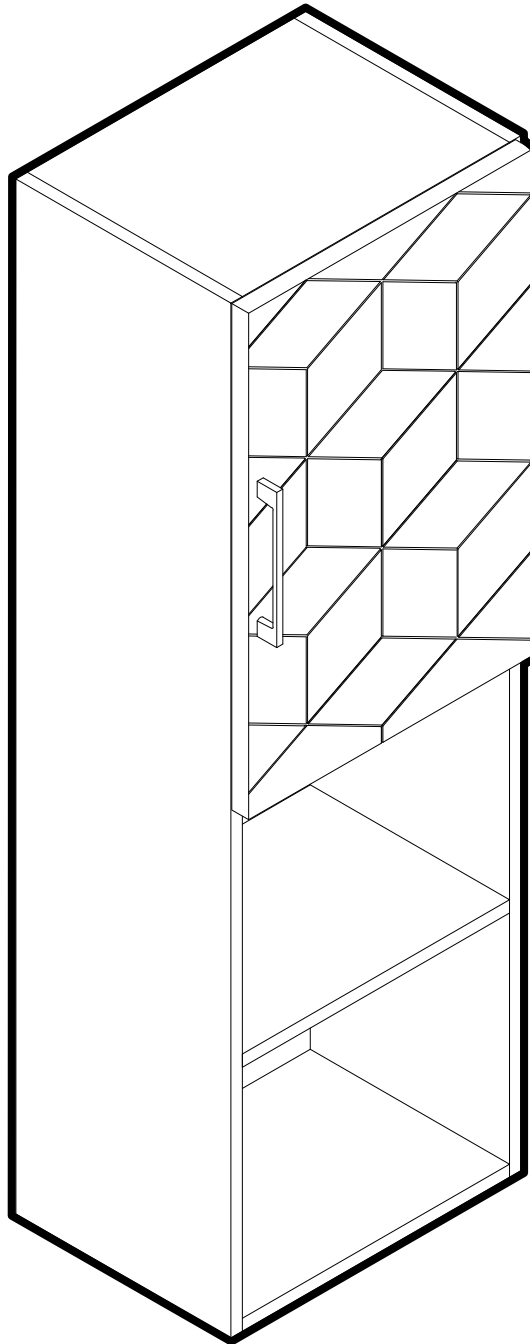


Linen Cabinet

INSTALLATION INSTRUCTIONS





PRIOR TO INSTALLATION:

- Inspect product to ensure no damages have occurred while in shipping.
- Observe all plumbing and building codes in accordance with your state and local requirements.
- Floor must be level prior to installation of cabinet.
- All dimensions are nominal! Be sure to measure your cabinet prior to installation.
- The step-by-step guidelines in the installation instructions are a general reference. Should there be any discrepancies, Swiss Madison cannot be held liable. It is recommended to install all Swiss Madison products by hiring a licensed professional.
- Read installation and maintenance instructions thoroughly before installing. Be sure to use proper tools and always wear proper personal safety accessories for your protection.

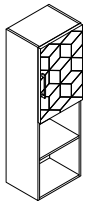
QUESTIONS OR CONCERNS?

Please contact us:

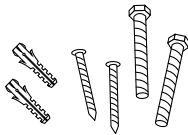
1-434-623-4766

info@swissmadison.com

INCLUDED PARTS:



Cabinet

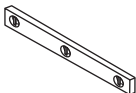


Hardware

SUGGESTED TOOLS & MATERIALS:



Safety Glasses



Level



Drill



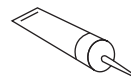
Screwdriver



Silicone



Drop Cloth



Adhesive

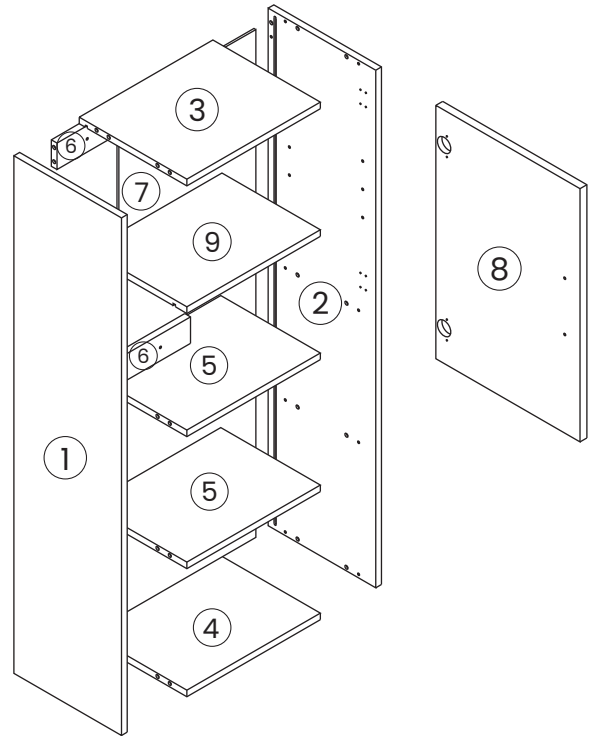
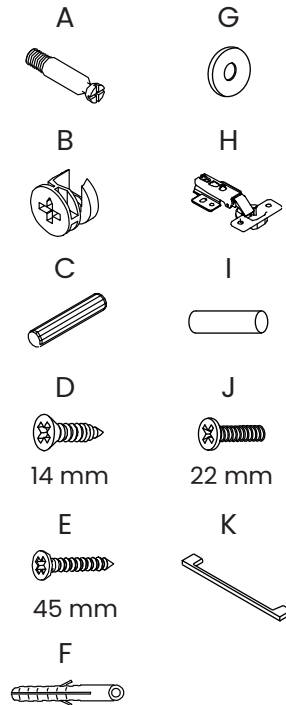


Gloves

PARTS FOR REFERENCE:

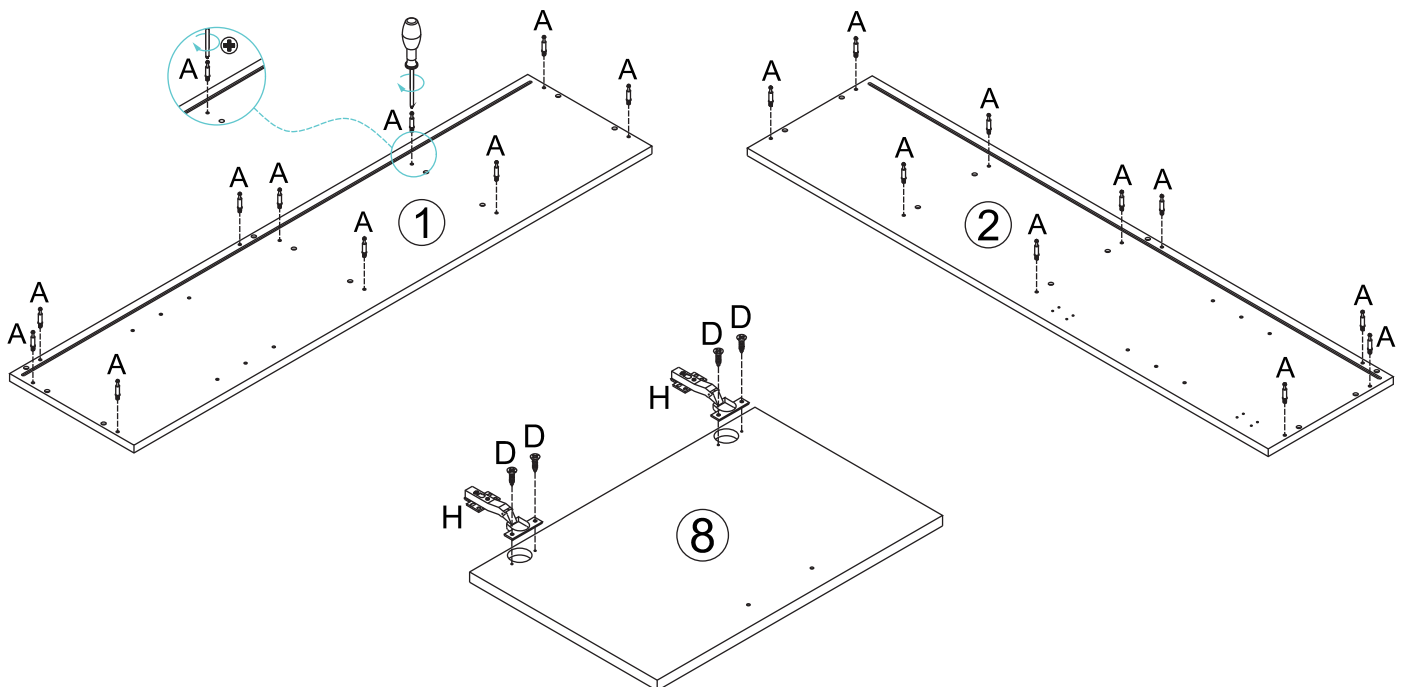
1. Left side panel
2. Right side panel
3. Top panel
4. Base panel
5. Middle shelves
6. Rear support bars
7. Back panel
8. Door
9. Top shelf

- A. Cam bolts
 B. Cam locks
 C. Wooden dowels
 D. Screws (14 mm)
 E. Screws (45 mm)
 F. Plastic Anchor
 G. Metal washers
 H. Door hinges
 I. Top shelf pegs
 J. Bolts (22 mm)
 K. Door handle



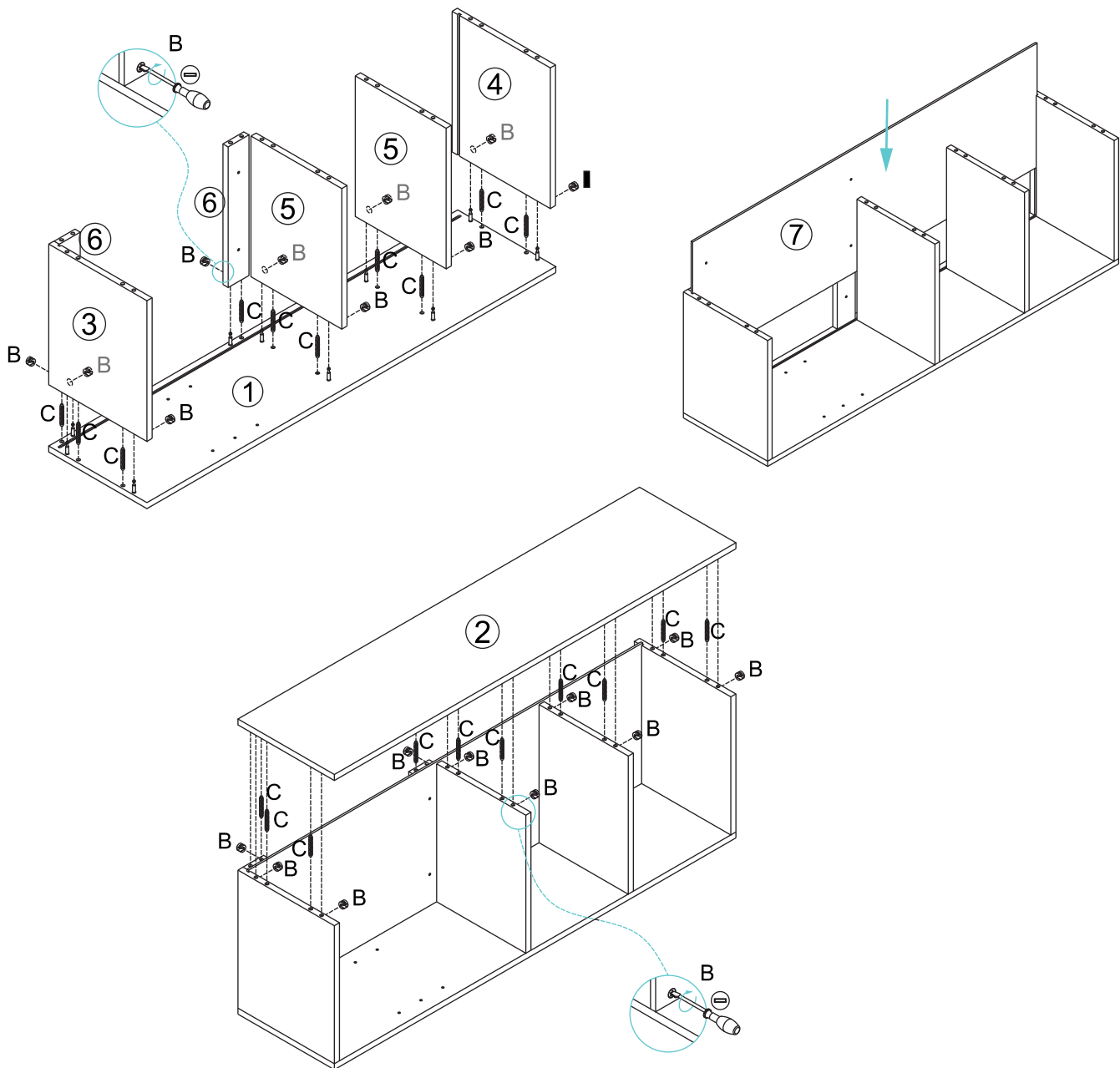
1 Prepare Frame

- Screw ten cam bolts (A) into the left side panel (1). Repeat for right side panel (2).
- Attach two door hinges (H) to the door (8) using two 14mm screws (D) per hinge.



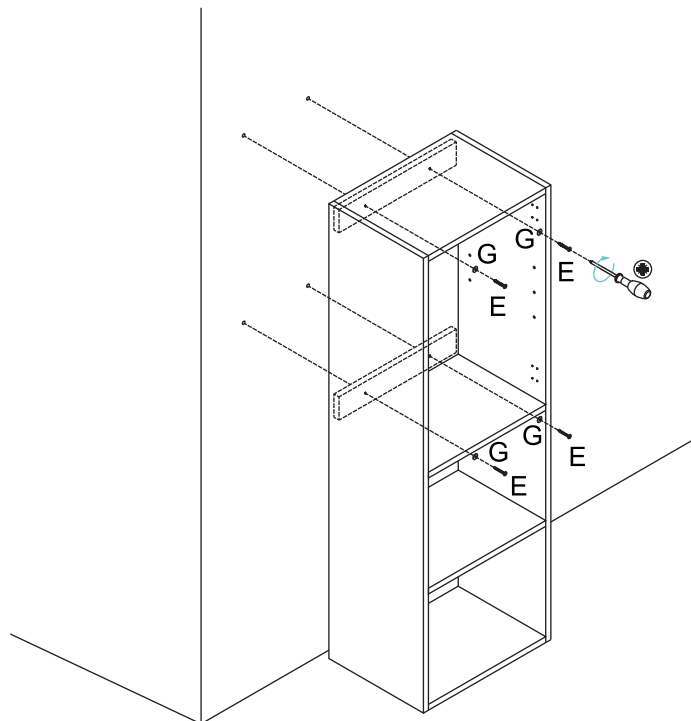
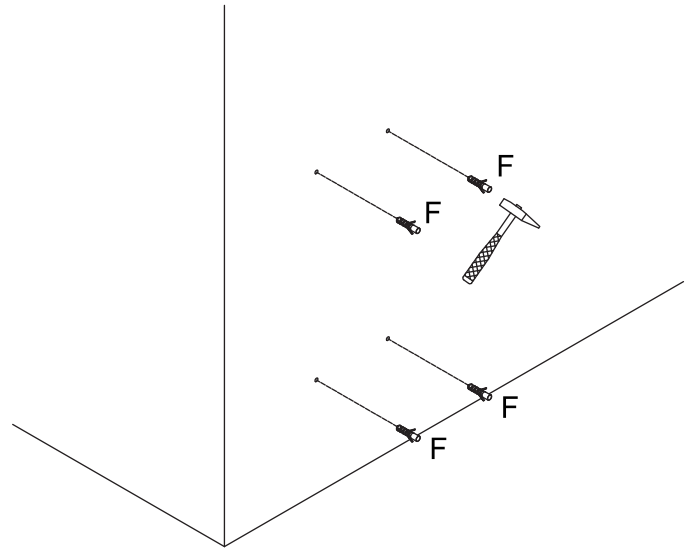
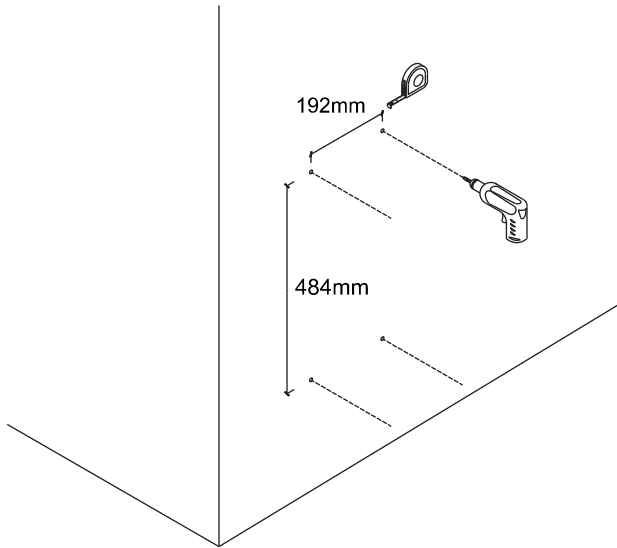
2 Assemble Frame

- Attach the top panel (3) and rear top bar (6) to the left side panel (1) using three wooden dowels (C) and the previously assembled cam bolts. Secure using three cam locks (B). Repeat this step for the second rear support bar (6) and top middle shelf (5).
- Attach the bottom middle shelf (5) and left side panel (1) using two wooden dowels (C) and the previously assembled cam bolts. Secure using two cam locks (B). Repeat this step for the bottom base (4).
- Insert back panel (7) into side panel (1).
- Attach right side panel (2) using ten wooden dowels (C) and the previously assembled cam bolts. Secure using ten cam locks (B).



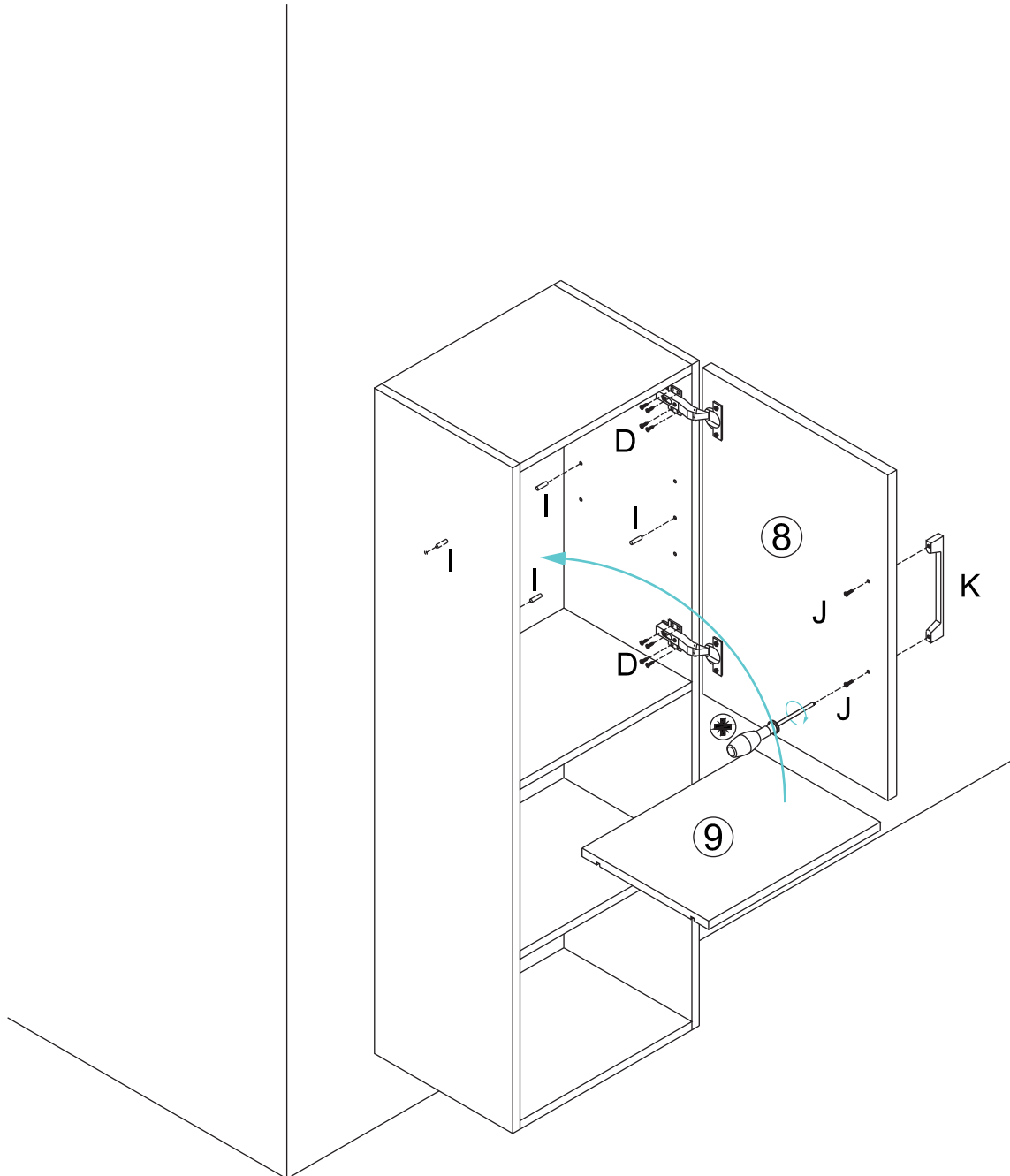
3 Secure Cabinet to Wall

- Mark four pilot holes into the desired location on your wall which will align with the two rear support bars on the back of the cabinet. Insert four plastic anchors (F) into the pre-marked holes.
- Align both rear support bars (6) to the plastic anchors (F) and secure using 4 metal washers (G) and four 45mm screws (E).



4 Install Door Hinges and Handle

- After cabinet is mounted, insert four top shelf pegs (I) inside the cabinet and place the top shelf (9) onto the pegs.
- Secure the door handle (K) to the door panel (8) using two 22mm bolts (J) as shown below.
- After the handle is secure. Attached 2 hinges (H) to the inside of the right side panel (2) using four 14mm screws (D) per hinge.



ONE-YEAR LIMITED WARRANTY

Swiss Madison® products are made with quality materials and excellent craftsmanship to provide our customers with beautiful, durable, long-lasting products. Should there be any defects in materials or craftsmanship under regular use that are discovered within the first year after delivery, Swiss Madison® will provide replacement parts at no charge, or at its discretion, replace any product or part of the product that is deemed defective, under normal installation, use, service or maintenance. This warranty applies only to the original purchaser. Proof of purchase must be submitted with any warranty claim.

Swiss Madison® recommends that all installations of Swiss Madison® products to be conducted by a licensed plumber or contractor. Swiss Madison® will not be held responsible for any damage or product failure due to improper installation, misuse, or failure to utilize a licensed plumber or contractor for installation. Swiss Madison® is not responsible for any installation or removal costs.

THIS ONE-YEAR LIMITED WARRANTY WILL BE VOIDED IF:

- The installation instructions were not followed by the installer
- The product has been moved from its initial place of installation
- The product has in any way been modified from its original condition
- The product has been subjected to improper maintenance, abuse, misuse, excessive use of chemicals, accidents, or other damages

Swiss Madison® makes no warranty that its products comply with any local building or plumbing codes. It is the consumer's responsibility and obligation to determine local code compliance prior to and during installation.

Swiss Madison® is not responsible for any special, incidental or consequential damages associated with the installation, replacement, return or use of the original purchaser's product. This includes, but is not limited to: freight costs, labor, travel time, lost profit, home damages and other contingent liabilities and costs (including, without limitation, costs associated with 'professionals' or 'experts', investigations, audits, analyses, attorneys and any other professional/hired services). Some states do not allow the exclusion or limitation of incidental or consequential damages, so the above limitation or exclusion may not apply to you.

The Swiss Madison® warranty is a comprehensive and explicit limit of liability. All other warranties are hereby disclaimed and waived.

QUESTIONS OR CONCERNS? Please contact us directly at: 1-434-MADISON (623-4766)



WARNING:

Contents of your order may contain sharp and possibly other harmful pieces and may cause hazard to children and adults. Swiss Madison® is not responsible in any way for personal injuries or damages.