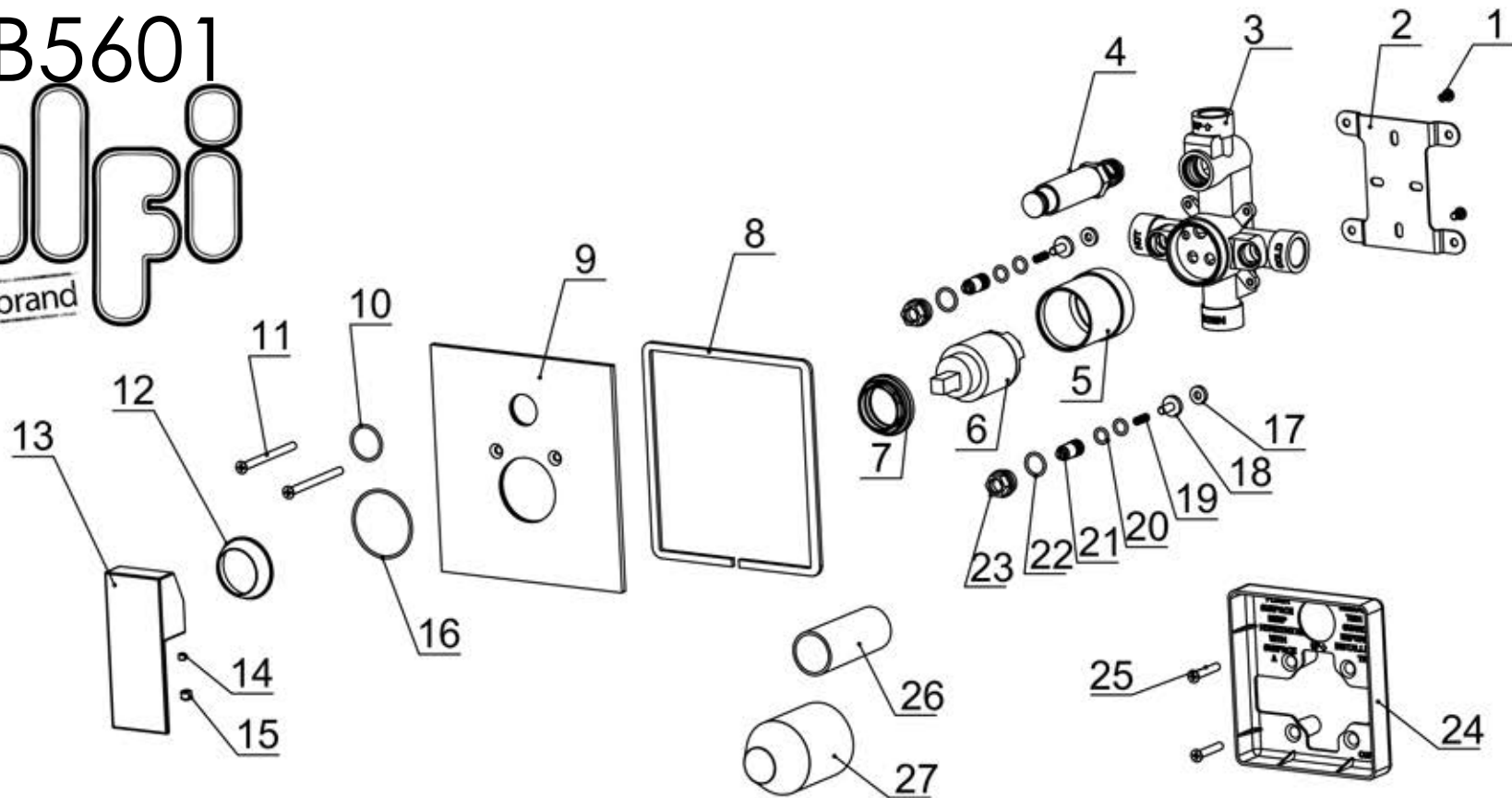


AB5601



No.	Description	Material	QTY	Code	No.	Description	Material	QTY	Code
27	2203 Protecting cover	PE	1	70030023529	14	M5*4 Fixing screw	Stainless steel	1	50060012000
26	2647 diverter protecting cover	PE	1	70030033629	13	2315 Handle	Zinc Alloy	1	20010010701
25	M5*30 cross bolt	Stainless steel	2	50060008300	12	2325 cartridge decorative cover	ABS	1	50010078101
24	10020056 Installation box	ABS	1	50020062830	11	M5*80 cross bolt	Stainless steel	2	50060028400
23	100200560 cartridge seat	H59	2	40060101152	10	22*1.8 "O" ring	NBR	1	70010012630
22	13.2*1.8 "O" ring	NBR	2	70010004830	9	500100849-2383 plate	H59	1	50010084901
21	2075 cartridge	H59	2	40060016052	8	Sponge sealing strip (6*3)	Sponge	0.57m	70030025530
20	8*1.8 "O" ring	NBR	4	70010000530	7	2383 cartridge nut	H59	1	40060073552
19	12734 Pressure spring	1Cr18Ni9Ti	2	50060030200	6	40H balance valve	Subassembly	1	20060005900
18	2075 Regulator tablet	H59	2	40060016252	5	2383 cartridge cover	H59	1	40060073601
17	72188 washer	NBR	2	70020018830	4	100200561 Diverter union	Subassembly	1	20070016701
16	45*1.8 "O" ring	NBR	1	70010015430	3	100200789 Mainbody	ZCuZn40Pb2	1	10020094352
15	2508 Chrome plug	ABS	1	50010031101	2	100200560 Fixing baseboard	Q235	1	50020062601
					1	M5*8 Corss bolt	Stainless steel	2	50060009500