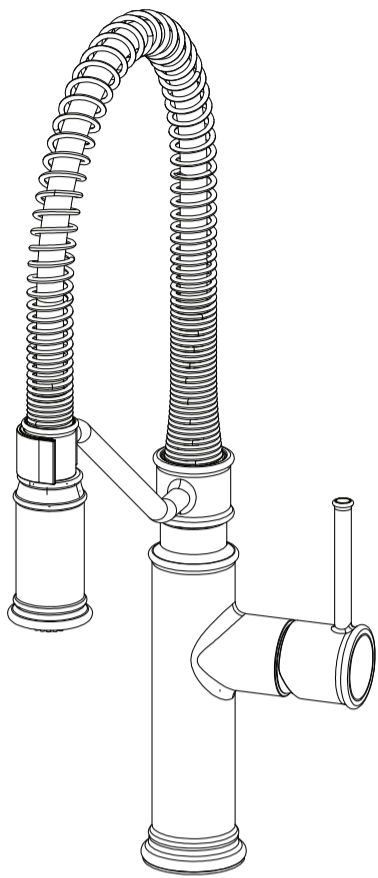


Installation Instructions
86452-86455 Series



92-86452-02

WARRANTY:

Warranty information can be found at:
www.wolverinebrass.com

TOOLS AND SUPPLIES NEEDED



IMPORTANT

- Do not over-tighten any connections or damage may occur.
- Be sure to read instructions thoroughly before beginning installation.
- This faucet has an operating range of 20-80 psi.

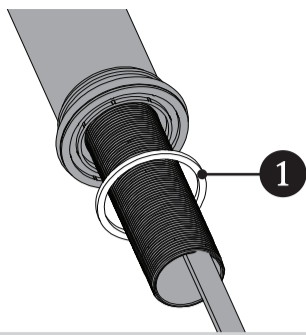
SAFETY TIPS:

- Cover your drain to prevent loss of parts.

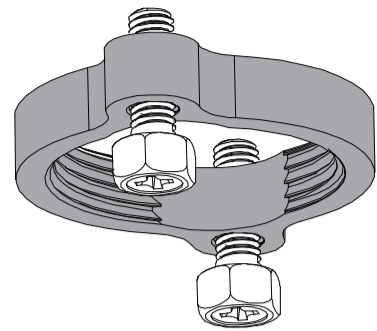
MAINTENANCE:

Your new Wolverine Brass Product is designed for years of trouble-free performance. Keep it looking new by cleaning it periodically with a soft cloth. Avoid abrasive cleaners, steel wool, and harsh chemicals as these will dull the finish and void your warranty.

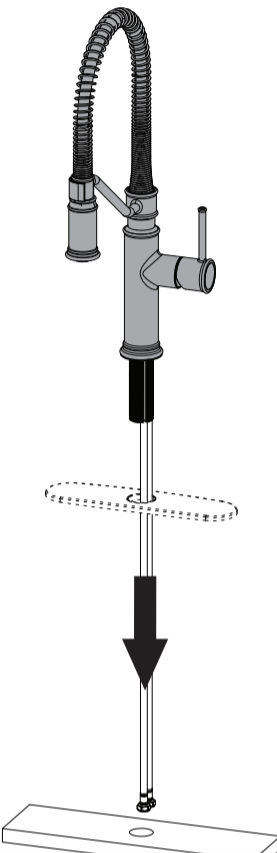
1 Verify the Rubber Washer (1) is seated at the bottom of the Faucet. If not, place the Rubber Washer (1) over hoses and align to base of Faucet.
NOTE: For single hole sink only.



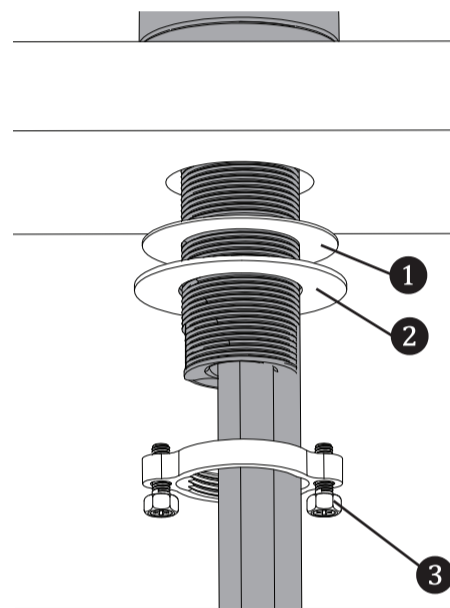
3 Partially thread the screws as shown on the Mounting Nut.



2 Place Hoses, one at a time, thru hole in mounting surface. Lower Faucet into position. If installing optional deckplate, place hoses through deckplate first.



4 From below, install Rubber Washer (1), Metal Washer (2), and secure with Mounting Nut (3). Align Faucet to desired position and hand tighten Mounting Nut (3).

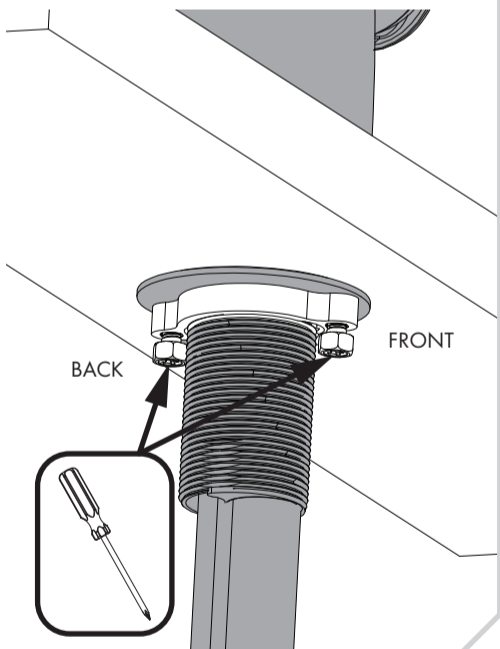


NEED HELP?
For additional assistance or service please contact:

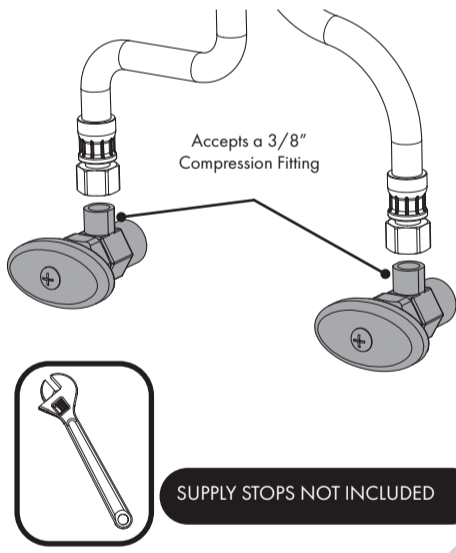
800-944-9292

www.wolverinebrass.com

5 Position the screws to the front and back. Tighten the screws with Phillips Screwdriver.

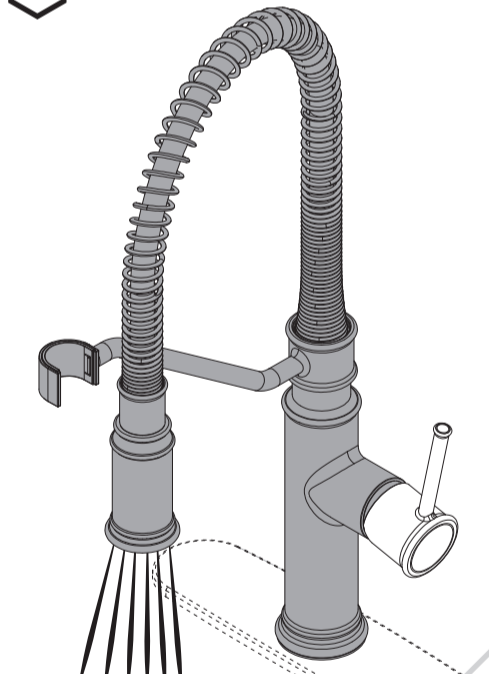


6 Make connections to water supplies. The inlet threads of the faucet are 9/16"-24 UNF and will accept a 3/8" Compression Fitting. Wrench Tighten. Do not over-tighten.



SUPPLY STOPS NOT INCLUDED

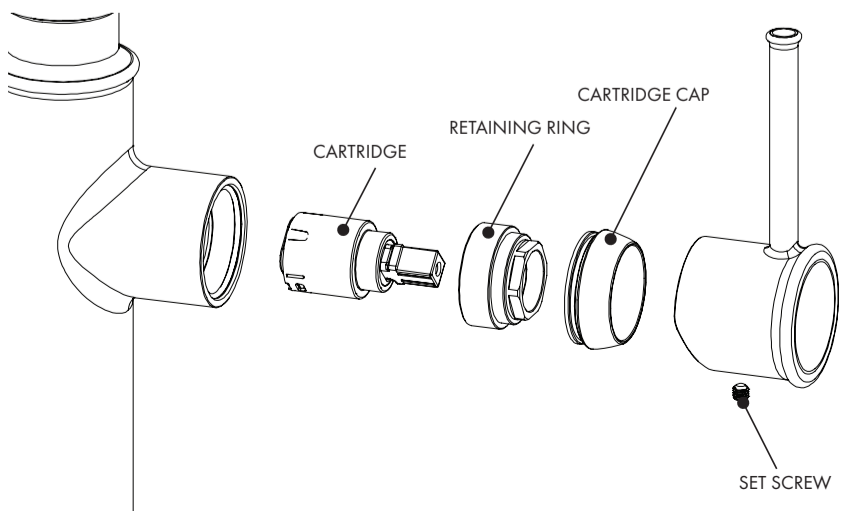
7 Turn ON water supplies and check for leaks.



8 CARTRIDGE VALVE REPLACEMENT

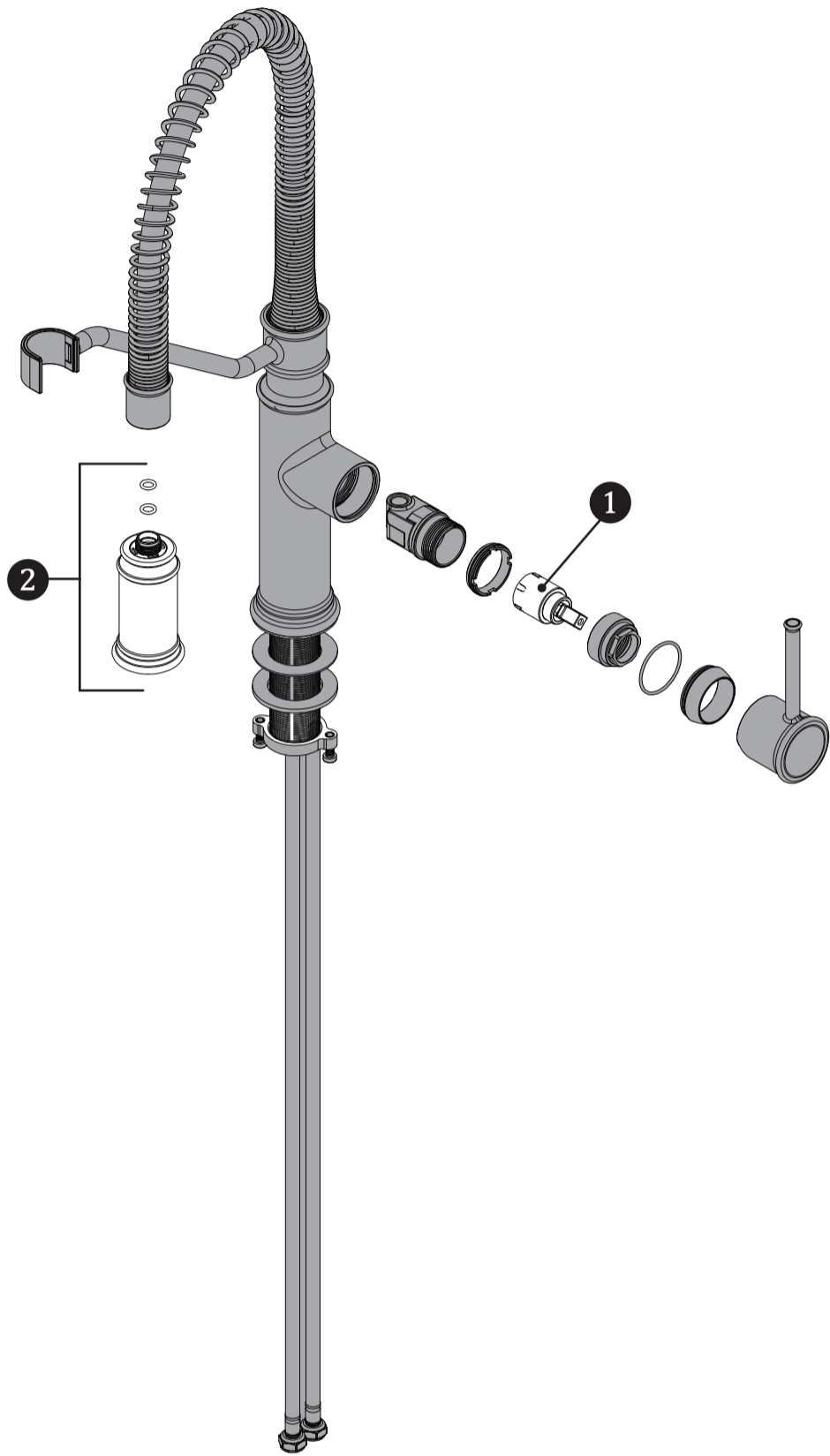
Turn off water supplies. Should you need to replace the Valve Cartridge, please follow the steps below.

- Remove Handle by removing Set Screw using a Hex Wrench.
- Remove Valve Cartridge Cap Nut and Retaining Ring.
- Replace Cartridge.
- Reassemble in reverse order.



REPAIR PARTS

ITEM NO.	PART NO.	DESCRIPTION
1	RPG05-112703	CARTRIDGE
2	RPG05-112894-XX (XX=FINISH)	SPRAYHEAD ASSEMBLY WITH SEALS



ROUGH-IN DIAGRAM

COMPLIANCE:

- ASME A112.18.1/CSA B125.1
- NSF/ANSI 61
- NSF/ANSI 372
- CEC (CALIFORNIA ENERGY COMMISSION)
- ADA 

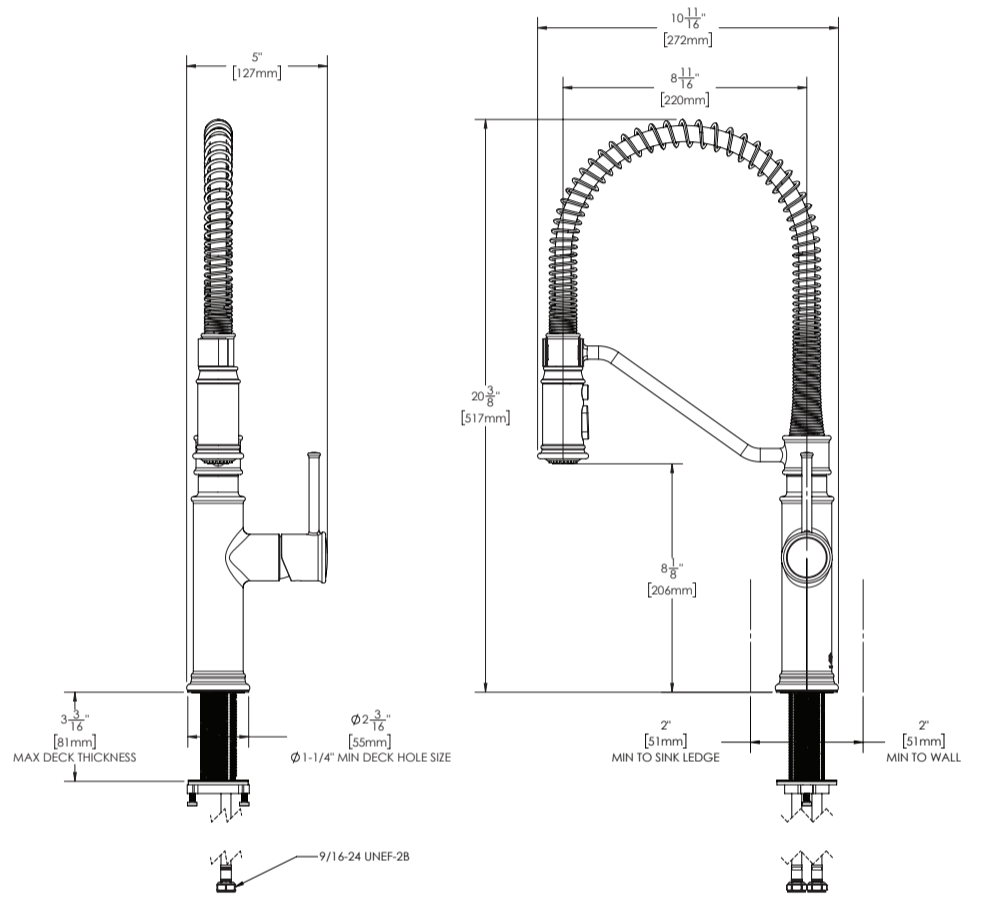
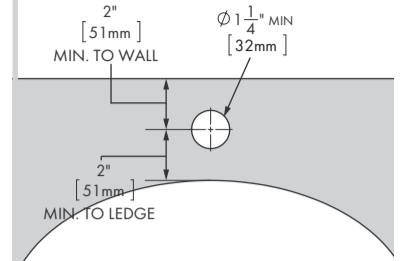
FLOW DATA:

1.8 gpm (6.8L/min)

CONNECTIONS:

Supply Connection:
 9/16"-24 UNF Connection
 (3/8" Compression)

KITCHEN ROUGH IN



ALL DIMENSIONS ARE IN INCHES (MILLIMETERS) UNLESS OTHERWISE SPECIFIED. DIMENSIONS SUBJECT TO CHANGE WITHOUT NOTICE.