

Aimpoint®

CompM3™ and CompML3™ User manual



1 PRESENTATION

Aimpoint's Reflex Sights are rugged precision electronic optical red dot sights developed for civilian, military and law enforcement applications.

Aimpoint sights are designed for the "two eyes open" method of sighting, which greatly enhances situational awareness and target acquisition speed. Thanks to the parallax-free design, the dot follows the movement of the user's eye while remaining fixed on the target, eliminating any need for centering. Further, the sight allows for unlimited eye-relief.

The CompM3 is compatible with 1st, 2nd and 3rd generation night vision devices, while the CompML3 is optimized for applications, which do not require night vision compatibility.

The CompM3 and CompML3 sights are using the revolutionary Advanced Circuit Efficiency Technology, ACET. ACET combines Aimpoint's superior accuracy and ease of use with significantly low power usage.

1.1 Technical specification

Optical system

Optical magnification:	1X
Eye relief:	Unlimited, no centering required
Optical coating:	Anti Reflex coating, all surfaces, Multi-layer coating for reflection, Band Pass coating for NVD* compatibility (CompM3)
Dot size:	2 and 4 MOA**
Dot brightness:	CompM3: 10 positions: 4 NVD, 6 daylight settings of which 1 Extra Bright CompML3: 10 positions: 1 Off, 9 daylight of which 1 Extra Bright
NVD compatible	Yes
Adjustments	1 click = 13 mm at 80 meters = 16 mm at 100 meters = 1/2" at 100 yards.
Adjustment range	±2 m at 100 meters, in windage and elevation

Materials

Material – housing:	Extruded, high strength aluminum, anodized
Material – rubber cover:	Chloroprene rubber (MIL-R-6855)
Material – lens covers:	Thermoplastic elastomer, black, non-glare
Surface finish:	Hard Anodized, Dark Graphite Grey, matte
Rubber cover:	Black or Dark Earth Brown

Power source

Battery:	One 3V Lithium battery type 2L76 or DL1/3N
Battery life*** (hours)	50 000 h on setting 7 of 10, Typically 500 000 h at NVD setting

Size

Length (incl. lens covers):	130 mm (5.1")
Width	62 mm (2.4"), incl rubber cover 49 mm (1.9") without
Height	58 mm (2.3"), incl rubber cover, 49 mm (1.9") without

Weight

Sight only	220 gram (7.8 oz) without
Sight incl rubber cover	270 gram (9.5 oz), incl rubber cover,

Mounting solutions

Mounting	One wide ring, 30 mm, or Aimpoint QR Ring
----------	---

Weight

Max temperature range:	-45 °C to +70 °C (-50 °F to +160 °F)
Water resistance	Submersible to 45 m (135 ft) water dept

*NVD: Night Vision Device

**MOA: Minute Of Angle 1MOA ≈ 30 mm at 100 meters ≈ 1" at 100 yards

***Average values, depending on brightness setting

1.2 Overview

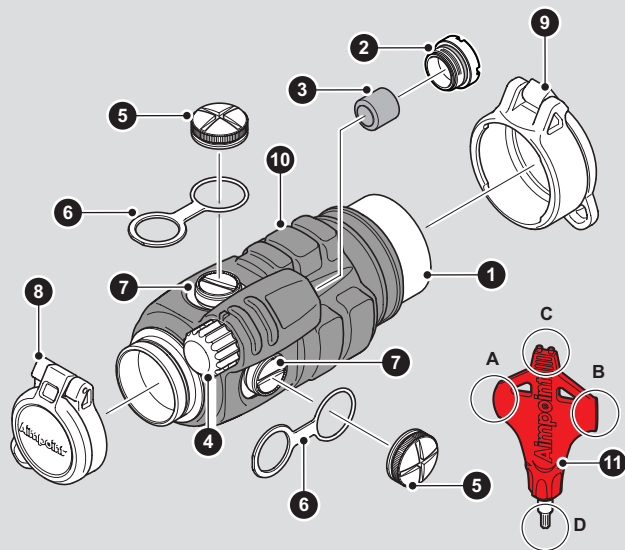


Fig. 1 Overview

- | | |
|-------------------------------|--|
| 1 Sight | 7 Adjustment screw for elevation / windage (2 pcs) |
| 2 Battery cap | 8 Lens cover, rear |
| 3 Battery (DL1/3N or similar) | 9 Lens cover, front |
| 4 Rotary switch | 10 Rubber Cover |
| 5 Cap Adjustment (2 pcs) | 11 Aimpoint tool (ABCD) |
| 6 Rubber strap (2 pcs) | |

2 OPERATION

⚠ WARNING

Ensure the weapon is not loaded and the safety selector is in the "safe" position before attempting to install, remove or perform maintenance.

⚠ WARNING

- **INGESTION HAZARD:** This product contains a button cell or coin battery.
- **DEATH** or serious injury can occur if ingested.
- A swallowed button cell or coin battery can cause **Internal Chemical Burns** in as little as **2 hours**.
- **KEEP** new and used batteries **OUT OF REACH of CHILDREN**.
- **Seek immediate medical attention** if a battery is suspected to be swallowed or inserted inside any part of the body.



- Your device is powered by button or coin cell batteries such as DL1/3N with a nominal voltage of 3 volts. Please carefully read the separate instruction manual for each battery-powered device.
- Remove and immediately recycle or dispose of used batteries according to local regulations and keep away from children. Do NOT dispose of batteries in household trash or incinerate.
- Even used batteries may cause severe injury or death.
- Call a local poison control center for treatment information.
- Non-rechargeable batteries are not to be recharged.
- Do not force discharge, recharge, disassemble, heat above +75°C / +167°F or incinerate. Doing so may result in injury due to venting, leakage or explosion resulting in chemical burns.
- Ensure the batteries are installed correctly according to polarity (+ and -). Do not

mix old and new batteries, different brands or types of batteries, such as alkaline, carbon-zinc, or rechargeable batteries.

- Remove and immediately recycle or dispose of batteries from equipment not used for an extended period of time according to local regulations.
- Always completely secure the battery compartment. If the battery compartment does not close securely, stop using the product, remove the batteries, and keep them away from children.

2.1 Installing Battery

- a Remove battery cap (2) by turning it counterclockwise using the Aimpoint tool (11B).
- b Insert battery (3) with positive end (+) toward battery cap. See Fig 2.

CAUTION

Check that the O-ring is in good condition and in position to ensure that there will be no water leakage into the battery compartment.

- c Install battery cap (2) by first turning it clockwise by hand. When firm resistance is encountered, continue to tighten the battery cap (2) an additional 1/4 turn using the Aimpoint tool (11B). Do not overtighten the battery cap (2).
- d Verify that the red dot is present by turning the rotary switch (4).

NOTE

Remove battery before putting the sight in storage for extended periods.

2.2 Installing Ring and Sight on the weapon

Aimpoint's sights are designed for installation on most types of weapons. If your weapon does not have or support an appropriate base(s), please consult your dealer, gunsmith or other qualified source.

- a Assemble the sight to the weapon by using Aimpoint's wide 30 mm ring or QR-mount. If other standard 30 mm rings are used, make sure that the ring(s) covers a length of minimum 25 mm or 1".
- b Ensure that the sight is correctly positioned for right or left hand shooting. See (fig 2) and (fig. 3).

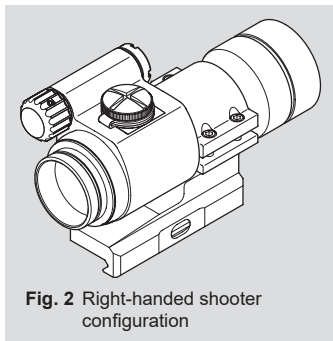


Fig. 2 Right-handed shooter configuration

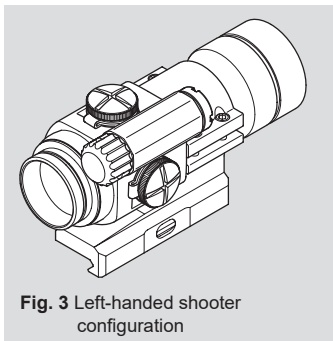


Fig. 3 Left-handed shooter configuration

▲ NOTE

Installing the Rubber cover (10) requires right-handed shooter configuration (fig. 2)

- c When using lens covers, ensure that they are correctly positioned and can be opened.

▲ NOTE

make sure that you have space between the bottom front part of the sight and the top of the base/weapon.

- d Finally, make sure that all screws are firmly tightened around the sight.
- e Complete zeroing according to chapter 2.4.

2.3 Installing the Rubber Cover on CompM3 and ML3

▲ NOTE

The Rubber Cover (10) shall be mounted to the CompM3 and ML3 after the sight has been installed in the ring.

- a Remove the lens covers (front and rear).
- b Put the front part of the sight into the lower opening of the Rubber Cover (10) and pull it backwards over the rear part of the sight. Be careful not to pull too hard and far, the Rubber cover (10) could be destroyed (fig. 4) .
- c Re-install the lens covers (8) and (9).
- d When removing the Rubber cover (10) from the sight, do the opposite: Start by gripping the lower the rear part of the Rubber cover (10) and pull it upwards and forward, off the sight.

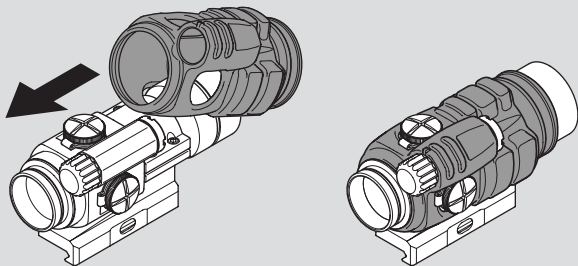


Fig. 4 Installing the Rubber Cover (Right-handed shooter configuration only!)

2.4 Zeroing

Aimpoint's sights are delivered in a centered position. Normally this means that only small adjustments are necessary, providing that the base(s) are properly aligned.

▲ CAUTION

Do not continue to adjust windage and elevation mechanisms if you encounter resistance.

The elevation Adjustment screw is located on top of the sight, while the windage screw is located on the right or left side, depending on how the sight has been mounted on the weapon. Aimpoint sights can be installed to support either right hand (fig. 2) or left hand (fig. 3) shooters.

- a** Open Front and Rear Lens covers (9) and (8).
- b** Turn the Rotary switch (4) clockwise until the red dot has a sufficient intensity to contrast against target.

Insert adjustment tool (coin, screwdriver, knife) or cartridge casing in Adjustment screw slot (7) and turn as follows:

⚠ CAUTION

Each click of the Adjustment screws (7) corresponds to a 13 mm movement of the point of impact at 80 meters, (4 mm at 25 meters, 16 mm at 100 meters and 32 mm at 200 meters or 1/4" at 50 yds, 1/2" at 100 yds and 1" at 200 yds)

- To move the point of impact to the right, turn windage adjustment screw counter clockwise (clockwise if screw located on left side).
 - To move the point of impact to the left, turn windage adjustment screw clockwise (counter clockwise if screw located on left side).
 - To move the point of impact up, turn elevation adjustment screw counter clockwise.
 - To move the point of impact down, turn elevation adjustment screw clockwise.
- c** Confirm zeroing by firing at least three shots at a zeroing target. Check impact points on zeroing target to confirm accuracy and repeat above procedure if required.
 - d** After initial firing, ensure that the mount and sight are secure.
 - e** Turn Rotary switch (4) to OFF position (counter clockwise).
 - f** Close front and rear Lens cover (9) and (8).

3 OPERATION UNDER EXTREME CONDITIONS

- a** Extreme heat (moist or dry): No special procedures required.
- b** Extreme cold: Extreme cold might shorten battery life. Keep spare batteries in your inner pockets to keep them warm.
- c** Salt air: No special procedures required.
- d** Sea spray, water, mud and snow: Ensure that the Battery cap (2) and the two Adjustment screw caps (5) are tight before exposing the sight to sea spray, mud, snow or before submersing the sight into water. Hand tighten only. Keep Lens covers (8) and (9) closed when the sight is not being used. Clean lenses with lens paper/cloth and wipe the sight dry as soon as possible after exposure to water, sea spray, mud or snow.
- e** Dust storms and sand storms: Keep Lens covers (8) and (9) closed when the sight is not being used.
- f** High altitudes: No special procedures required.

CAUTION

The lenses shall never be cleaned with fingers but with lens paper/cloth. If lens paper/cloth is not available:

- To clear away debris (sand, grass etc): blow away the dirt or rinse with clear water.
- To clean lenses: mist up the lenses or rinse with clear water and clean them with a soft piece of cloth.

4 TROUBLE SHOOTING PROCEDURES

4.1 Red dot does not appear

Discharged battery:	Replace Battery (3)
Battery installed incorrectly:	Remove and reinstall Battery (3) with (+) toward Battery cap (2).
Battery is not making good contact:	Clean contact surfaces and reinstall Battery (3).
Defective rotary switch:	Notify dealer/armourer

4.2 Impossible to zero

Adjustment screw is at its limit:	Check alignment of mount to barrel
Impact point is moving:	Check mount stability

5 MAINTENANCE

- a** This reflex sight does not require any particular maintenance while used under normal conditions.
- b** Under severe weather conditions please refer to chapter 3.
- c** Keep Lens covers (8) and (9) closed whenever the sight is not in use.
- d** Warehouse storage: Remove Battery (3) and allow lens surfaces to dry completely (if wet) before closing the Lens covers (8) and (9).
- e** To clean lenses refer to CAUTION in chapter 3.
- f** To reach maximum protection level for all weather conditions, wax is added into the rubber mixture. The wax will slowly migrate to the surface of the part. During frequent use this wax will be used up completely and not noticed by the user. For long time storage, the wax will not be used up as frequently and will be seen as a grey film on the surface. To restore to its original condition, please hand wash in warm dishwater.

Aimpoint AB

Jägershillgatan 15
SE- 213 75 Malmö, Sweden
Phone: +46 (0)40 671 50 20
Fax: +46 (0)40 21 92 38
e-mail: info@aimpoint.se

Aimpoint Inc.

7309 Gateway Court
Manassas, VA 20109, USA
Phone: +1 703-263-9795
Fax: +1 703-263-9463
e-mail: info@aimpoint.com

WWW.AIMPOINT.COM

© 2008, 2025 Aimpoint AB. [11432-5]

