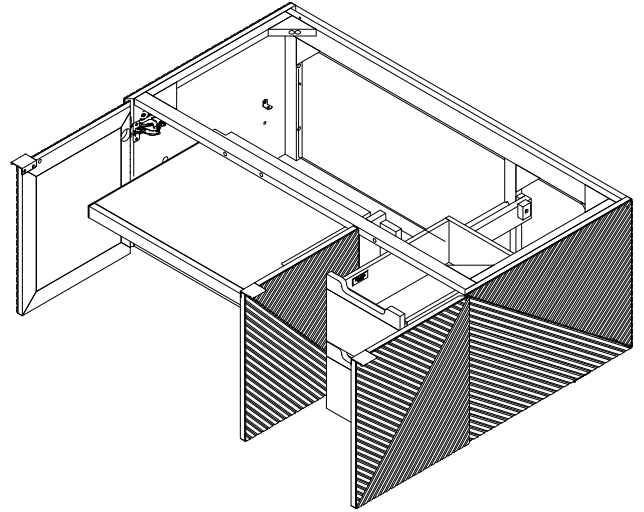
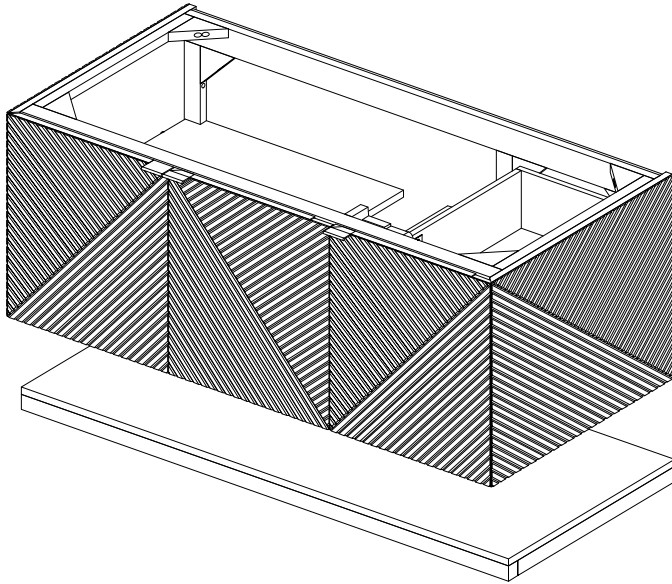


48" Marcello Single Vanity

D200-V48-CSN

FREEPOWER COMPATIBLE



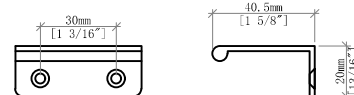
Features and Materials

Solids: Poplar
 Veneers: Acacia
 Panels: Marine MDF
 Installation Type: Wall mount
 Number of Basins: One, with Optional 3cm Top
 Vanity Top Included : No, Optional 3cm Tops Available
 Overflow: Yes, Front Facing
 Number of Doors: 3
 Number of Drawers: 3
 Shelves: 1, Internal
 Shelves: 1, Floating
 Assembly Type: Installation of Optional 3cm Top with Sink
 Assembly Type: Cabinet comes fully assembled
 Drawer Box Material and Construction: Acacia Veneer overs Marine MDF
 English Dovetail Joinery
 Hardware Material and Finish: Stainless Steel in Champagne Brass
 Fits Drain Hole Size: 1 3/4"
 Full Extension, Soft Close Glides
 Aluminum Laminate Drawer Liners
 Adjustable Levelers

Dimension

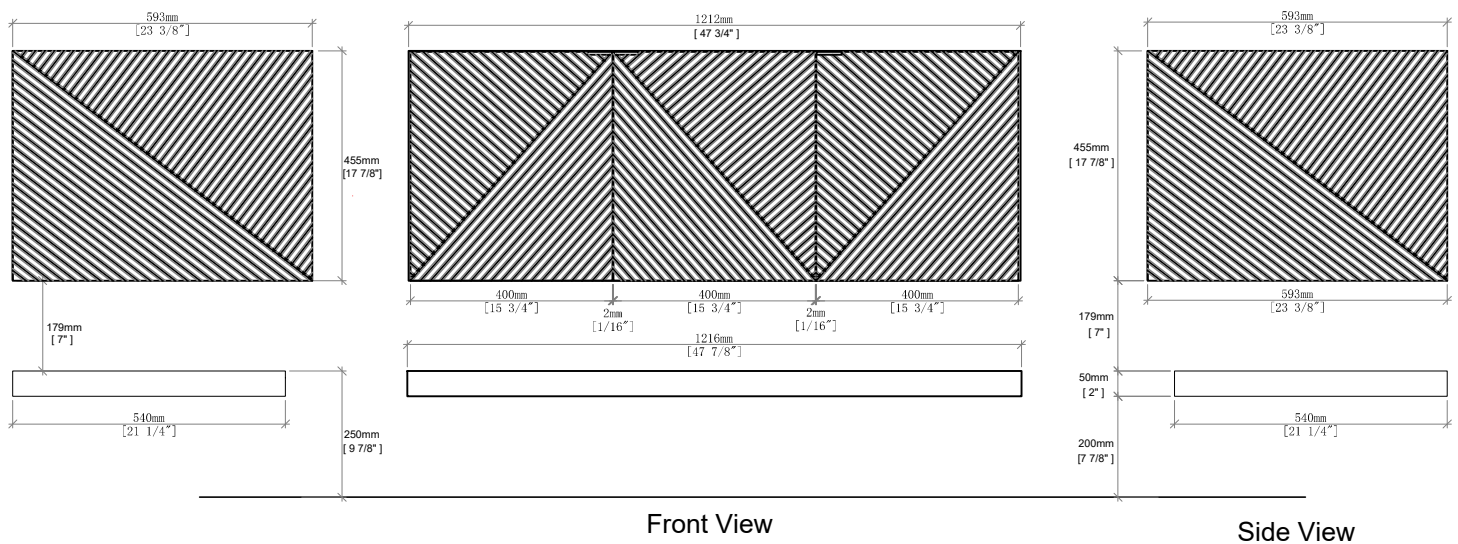
Cabinet Width: 47-3/4" (1212mm)
 Cabinet Depth: 23-3/8" (593mm)
 Height: 17-7/8" (455mm)
 Shelf Width: 47-7/8" (1216mm)
 Shelf Depth: 21-1/4" (540mm)
 Shelf Height: 2" (50mm)
 Rough-In Height: 23-1/8" (587mm)
 Requires a compact, bottle-style trap

Drawer Edge Pulls



48" Marcello Single Vanity
D200-V48-CSN

JAMES MARTIN
VANITIES®



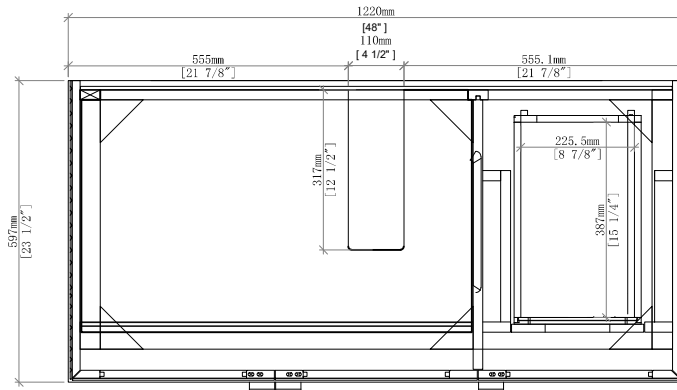
All dimensions are nominal

Diagrams are of cabinet only-James Martin Optional Countertops and sinks are not shown

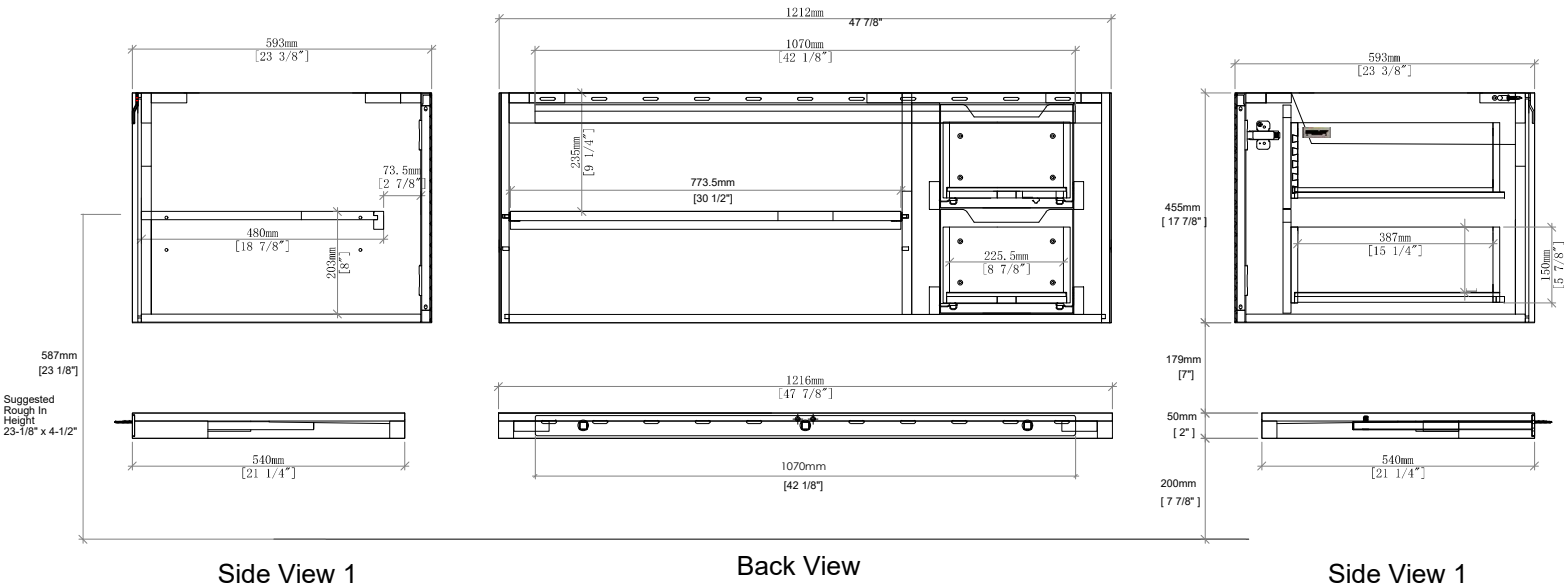
Visit website for warranty and installation information
<http://www.jamesmartinvanities.com>

48" Marcello Single Vanity

D200-V48-CSN



Top View



Side View 1

Back View

Side View 1

All dimensions are nominal

Diagrams are of cabinet only-James Martin Optional Countertops and sinks are not shown

Visit website for warranty and installation information
<http://www.jamesmartinvanities.com>