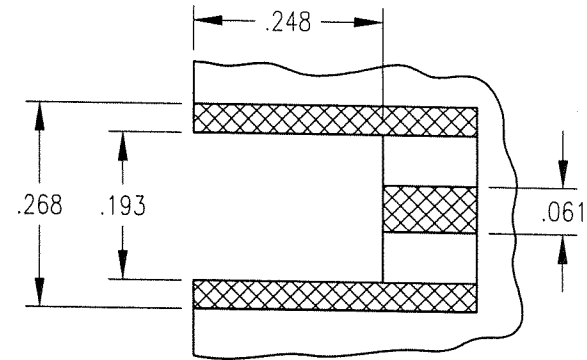
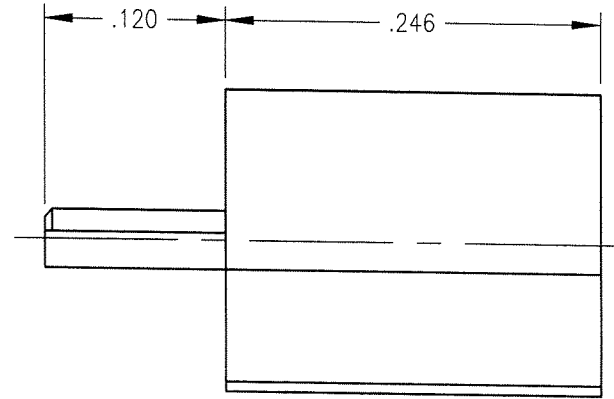
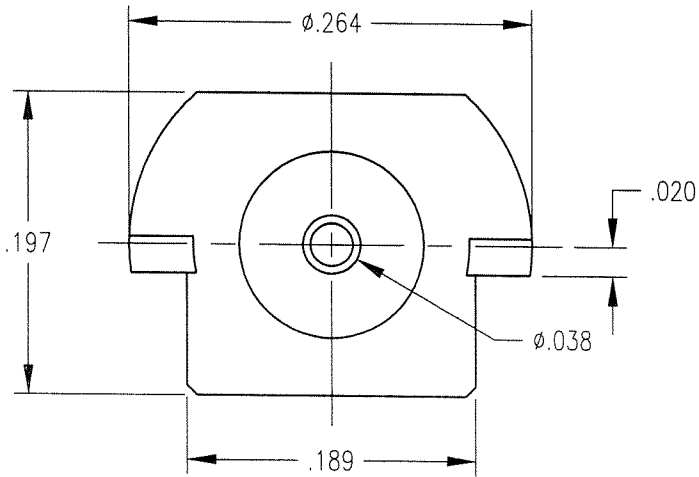


DWG. NO.		
451-086-0040H		
REV	DESCRIPTION	BY DATE APPD
A	RELEASE PER NPR 2366	JWH 4/25/00 [Signature]



RECOMMENDED SOLDER PATTERN
FOR REFERENCE ONLY
PATTERN MAY VARY DEPENDING ON
CUSTOMER REQUIREMENTS

NOTES:

1. MATERIALS:

BODY: BRASS PER ASTM B16
CONTACT: COPPER ALLOY
INSULATOR: TEFLON PER ASTM D1710

2. FINISH:

BODY: .000015 MIN. GOLD PER MIL-G-45204 OVER
.000050 MIN. NICKEL PER QQ-N-290
CONTACT: .000030 MIN. GOLD PER MIL-G-45204 OVER
.000050 MIN. NICKEL PER QQ-N-290

PER ASME Y14.5M-1994 UNLESS OTHERWISE SPECIFIED: DIMENSIONS ARE IN INCHES (MM)		Litton	
TOLERANCES: DECIMALS .xx ± .01/0.254 xxx ± .005/0.127 ANGLES ± 2°		Winchester/Retconn 400 Park Road Watertown, Connecticut 06795	
SCALE: 8:1		TITLE	
CUSTOMER DRAWING		MCX EDGE MOUNT JACK	
DRAWN	DATE	CHECKED	DATE
KJT	03/15/00	JWH	3/16/00
APPROVED	DATE	APPROVED	DATE
JMC	3/16/00	JED	3/16/00
A		451-086-0040H	SHT. 1 OF 1 REV. A