

SQUARE DYNASTY BUBBLING TABLETOP WATER FOUNTAIN LZH-185

Read all assembly and care instructions carefully before using this product. Save this manual for future reference.

Assemble components on a soft, clean surface to avoid damaging the finish.



Inspect packaging to ensure all parts are accounted for before disposing of packaging.

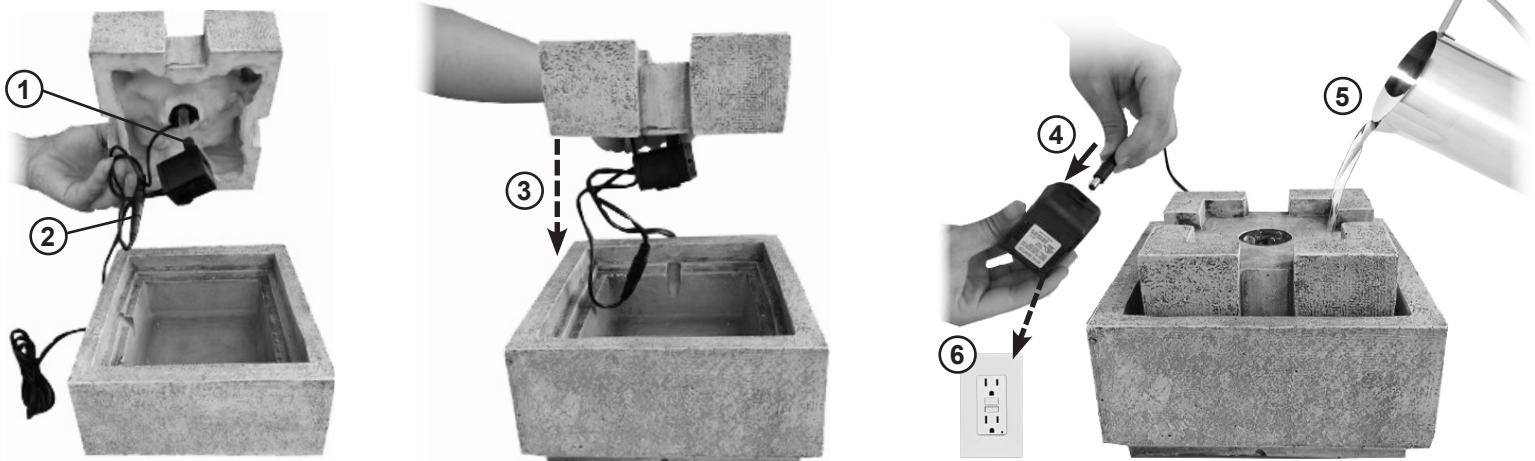
PARTS	QTY.
Fountain Topper	1
Fountain Base	1
Electric Submersible Pump	1
Power Adapter	1



NOTE: The water tubing is built into the topper. Take care when handling the water tube; detaching the water tube from the fountain will damage the fountain and void the product warranty.



Quiet, minimal water sound



ASSEMBLY

1. Attach the pump to the tubing that is built into the fountain topper. **TIP:** Familiarize yourself with the pump. Water flow is controlled by a switch on the front of the pump. Moving the switch to (+) increases water flow, (-) decreases water flow.
2. Plug the short cable that is on the pump into the light cable that is built into the topper.
3. Gently place the fountain topper onto the fountain base ensuring the power cord runs out through the groove that is on the back of the fountain base.
4. Plug the pump cord into the power adapter.
5. Fill the fountain with enough clean water to keep the pump fully submerged during operation, approximately 3 cups.
6. Plug the power cord into a properly grounded GFCI outlet.

Note: When first used, there may be air trapped in the pump. It may take several minutes for trapped air to escape, allowing water to flow.

Care & Maintenance

- For indoor use only.
- Keep fountain out of reach of children and pets.
- Keep the power cord away from all heat sources. Do not use electrical cords in areas with high temperatures.
- Check the water level frequently to ensure the pump remains fully submerged; never allow the pump to run dry as it will burn out the motor.
- Only use water in this fountain. Distilled water will help prevent mineral buildup but is not required. Avoid heavily chlorinated water as it may damage the fountain or pump.
- Periodically change the water to reduce scale and buildup — clean components regularly for optimal performance and appearance. DO NOT use harmful additives such as bleach, chlorine, etc. OR abrasive materials to clean the fountain or pump.
- Always unplug the fountain before cleaning and/or maintaining the fountain and the recirculating pump.
- Take care when handling the pump; only pick it up by the body of the pump, never by the power cord.
- Although this fountain was designed for indoor use, there is potential for splashing or slow leaks. Test the fountain on a water-safe surface. Always protect surfaces that can be damaged by water.

Troubleshooting

- If water is not flowing within several moments of the fountain being plugged in, ensure that the pump is fully submerged underwater. Add water to the reservoir if necessary. The pump may have air bubbles in the filter, which can prevent water from circulating properly and can also cause excess pump noise. Unplug the power supply for a few moments and plug it back in.
- Check the flow control on the body of the pump, as it may need to be adjusted to achieve the desired water flow rate.
- Inspect the pump and tubing for obstructions.
- Pump noise can be caused by trapped air, low water level, or the pump being too close to the walls of the fountain. While the pump is fully submerged, try gently tapping the pump with your finger to help release the trapped air. Also, check if adding water or moving the pump helps to reduce noise.
- If the light is not working, ensure the cable is fully connected and the seal is adequately tightened (do not over-tighten). Ensure connector ends are dry before connecting and plugging the power cord back into an outlet.
- Check to make sure the power outlet is working; consult a certified electrician if in doubt about electrical connections.

If you experience issues with assembly, pump operation, or the product was damaged during transit, please contact our customer service team through one of the methods mentioned at the top of page 1.

Please have the item number and order information ready to expedite response time.



IMPORTANT SAFETY INFORMATION



- For indoor use only.
- Keep fountain out of reach of children and pets.
- Fountains may splash or leak; always protect surfaces that can be damaged by water.
- Prevent water loss or damage to electrical sockets by ensuring the power cord has a drip loop; a diagram of a drip loop is shown on the right.
- Make sure the power cord is away from traffic areas.
- Keep power cord away from all heat sources. Do not use electrical cords in areas with high temperatures.
- Check the water level frequently to ensure the pump remains fully submerged; never allow the pump to run dry as it will burn out the motor.
- Always unplug the power supply before cleaning and maintaining the fountain and the recirculating pump.
- Take care when handling the pump; only pick it up by the body of the pump, never by the power cord.



Drip Loop

Drawing is for visual reference only, cord placement and plug type vary by fountain style.

Any modification to the product or failure to follow recommended care will void the product warranty.

WARNING!

Manufacturer and seller expressly disclaim any and all liability from personal injury, property damage or loss, whether direct or indirect, or incidental, resulting from the incorrect attachment, improper use, inadequate maintenance, or neglect of this product.