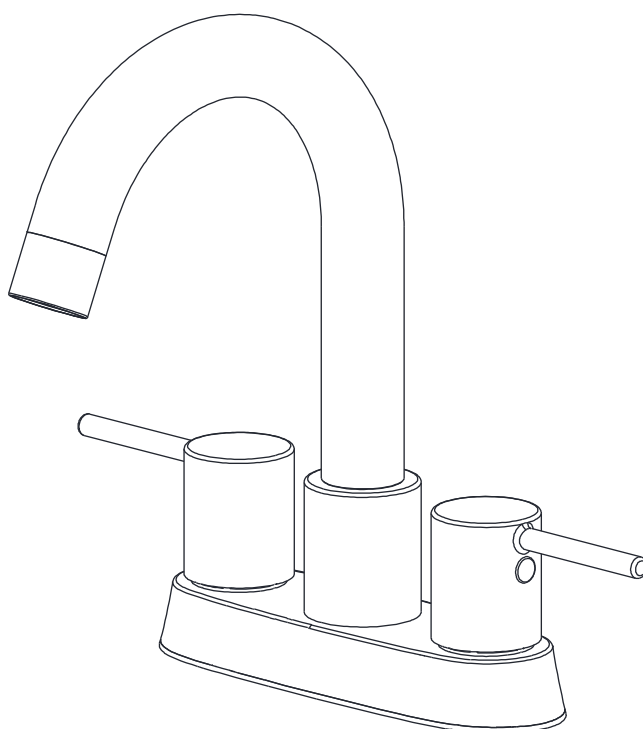




ITEM: L-AZ 300**

ANZZI LAVATORY FAUCET INSTALLATION & OPERATION MANUAL

V1.0
11/14/2024



DON'T WAIT! REGISTER NOW!

Register your product within 90 days to ensure it is recognized as a purchase and covered under warranty.

Register online at <https://anzzi.com/pages/register> or scan the QR code on PG. 2.



PRODUCT REGISTRATION*

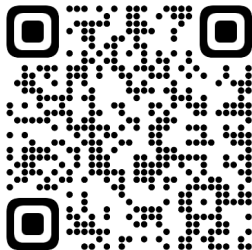
IMPORTANT: Warranty will not be recognized unless product is registered.

Register online at <https://anzzi.com/pages/register> or Scan the QR code below.

Registering your product maximizes your warranty benefits and ensures prompt service and support.

1

USE YOUR PHONE CAMERA
TO SCAN THE QR CODE



2

FILL IN A QUICK
REGISTRATION FORM

Thank you for your purchase!

Registering your products ensures you maximize your warranty benefits and receive prompt service and support.

Name*

Email*

City*

Order #*

Installer Name

...

Model Purchased*

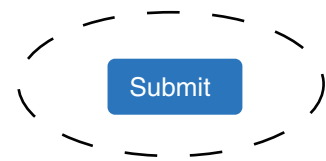
Installer Phone Number

Customer Age Range

Submit

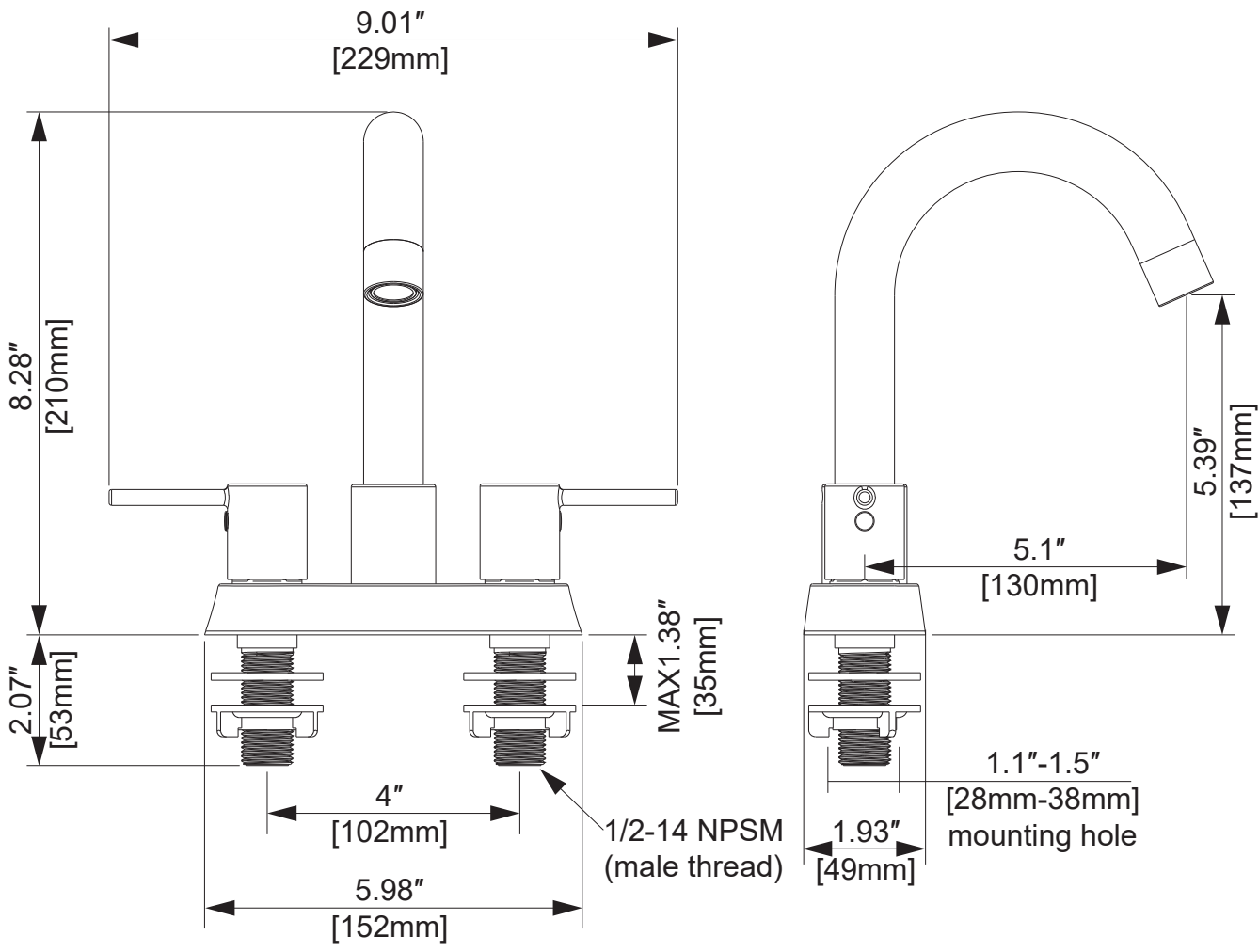
3

CLICK SUBMIT AND
ENJOY PEACE OF MIND

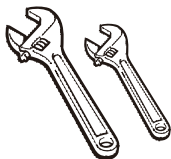


Need help? For technical support call 305-614-4070 or visit us at www.ANZZI.com

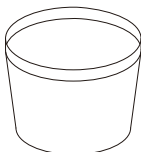
PRODUCT SIZE CHART



TOOLS

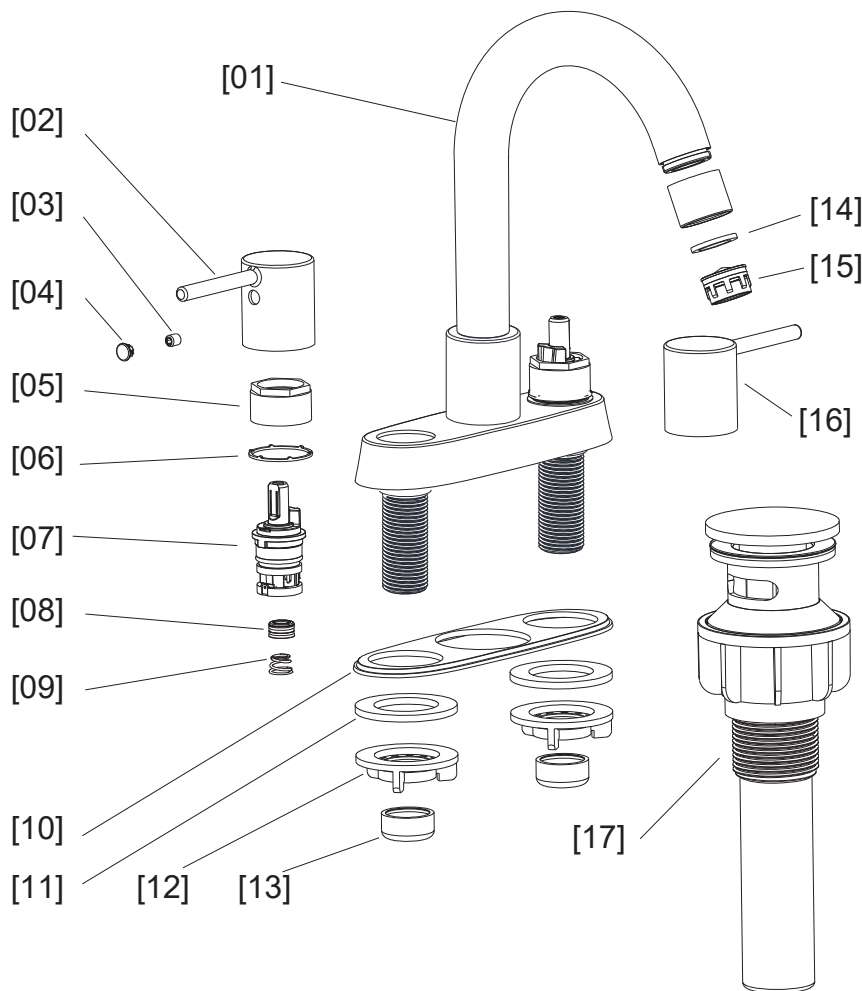


Wrench



Bucket

COMPONENTS



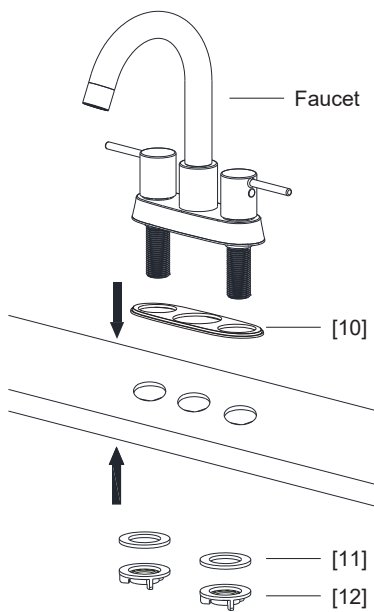
Part.	Description	Qty
[01]	Body	1
[02]	Handle (left)	1
[03]	Screw	3
[04]	Cap	2
[05]	Nut	2
[06]	Gasket	2
[07]	Cartridge	2
[08]	Gasket	2
[09]	Spring	2
[10]	Gasket	1
[11]	Washer	2
[12]	Mounting Nut	2
[13]	Cover	2
[14]	Washer	1
[15]	Aerator	1
[16]	Handle (right)	1
[17]	POP-UP	1

Before installation:

1. Please ensure that all components are included.
2. Ensure all supply lines are free of debris and that supply stops are installed.
3. Ensure water pressure is between 20-125 PSI.
4. If you encounter difficulties during installation, please contact a professional plumber.

INSTALLATION

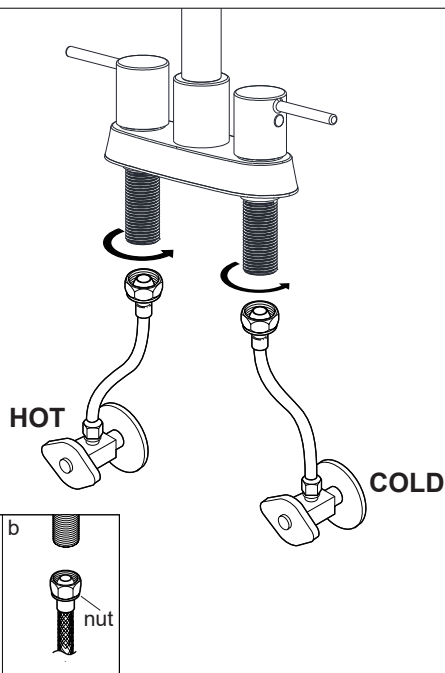
1



STEP 1:

1. Remove the **Cover [13]**, **Mounting Nut [12]**, and **Washer [11]** from the **Faucet**.
2. Install the **Faucet** with the **Gasket [10]** at the bottom into the faucet hole on the sink.
Adjust the **Faucet**.
Note: If sink is uneven, use silicone under the **Gasket [10]**.
3. Slide **Washer [11]** up onto **Faucet** under sink and secure with **Mounting Nut [12]**.
4. Hand-tighten the **Mounting Nut [12]** to secure.

2

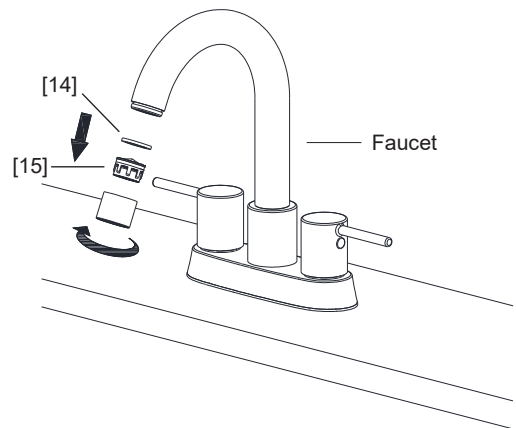
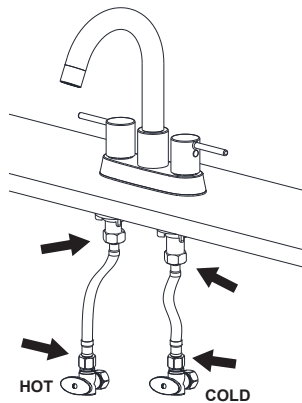


STEP 2:

1. Make sure all fittings and end connections are free of debris.
2. Turn off the supply valves (not included).
3. Use hoses (not included) or ball nose (not included) to connect the faucet to hot and cold water supplies. Tighten the nuts to secure.
DO NOT OVER TIGHTEN.
Determine which type of connection you will be making.
 - a. Ball nose risers (3/8" O.D. copper tubing) with coupling nuts;
 - b. 1/2" I.P.S faucet connectors.

INSTALLATION

3

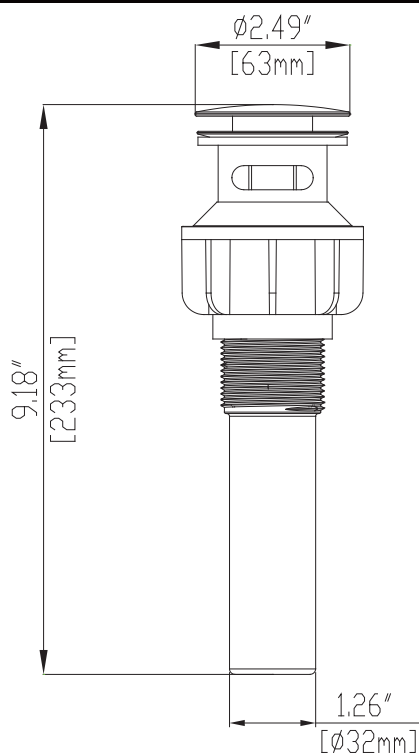


STEP 3:

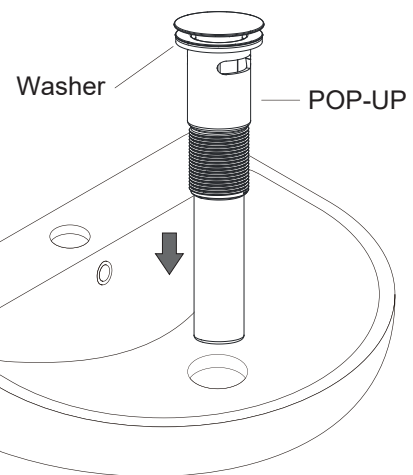
1. Turn on hot and cold water supplies and check all connections for leaks where indicated by arrows. Retighten if necessary, but do not overtighten.
2. Remove the **Aerator [15]** from the **Faucet**.
3. Turn the **Handles** to the full-on position and flush the water lines for one minute. Reinstall **Aerator [15]**.

PUSH POP-UP INSTALLATION

Specification



4

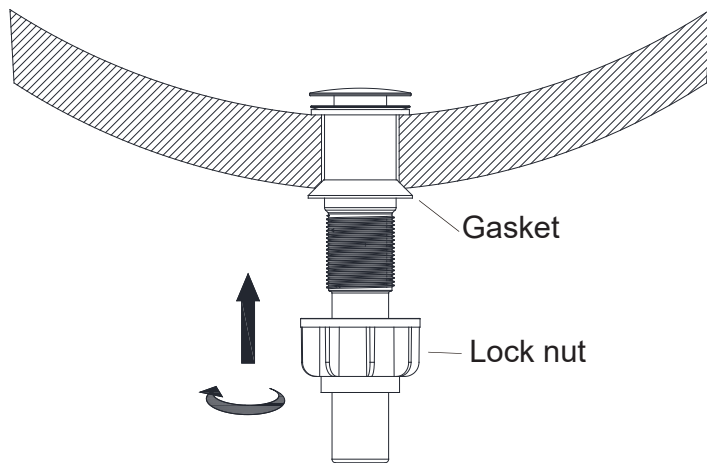


STEP 4:

1. Remove the **Lock Nut** and **Gasket** from the **POP-UP** drain.
2. Install the **POP-UP** and **Washer** through the hole of the sink from above as shown in Figure 4.

INSTALLATION

5



STEP 5:

Slide the **Gasket** up onto the **POP-UP** from under the sink and secure with the **Lock nut**.

Notice: Ensure the flat surface of the Gasket faces downward.

CLEANING & MAINTENANCE

- 1.To preserve the finish on the metallic parts of your ANZZI faucet, apply a non-abrasive wax, such as car wax. Any cleaners should be rinsed off immediately.
- 2.Clean the Aerator regularly to remove calcium buildup and any blockages that may reduce water flow.

