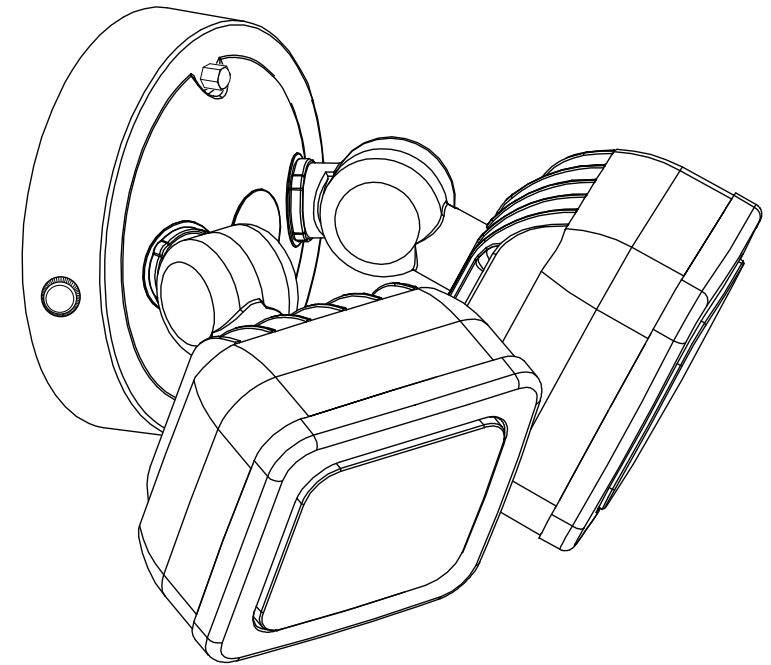


MODEL 73708



# 2-Head Mini Security Flood Light

*IMPORTANT SAFETY INSTRUCTIONS AND INSTALLATION GUIDE*



FEIT ELECTRIC COMPANY  
PICO RIVERA, CA, USA  
(800) 543-3348 | FAX (562) 908-6360

[www.feit.com](http://www.feit.com)

#### LIMITED WARRANTY

This product is warranted to be free from defects in workmanship and materials for up to 5 years from date of purchase. If it fails to do so, please contact Feit Electric at [info@feit.com](mailto:info@feit.com) or call 1-866-326-BULB (2852) for instructions on replacement. This replacement is the sole remedy available and liability for incidental or consequential damage is expressly excluded. Do not return the product to the store. For comments please contact: Feit Electric Customer Service 4901 Gregg Road, Pico Rivera, CA 90660. [www.feit.com](http://www.feit.com).

**READ BEFORE INSTALLATION**

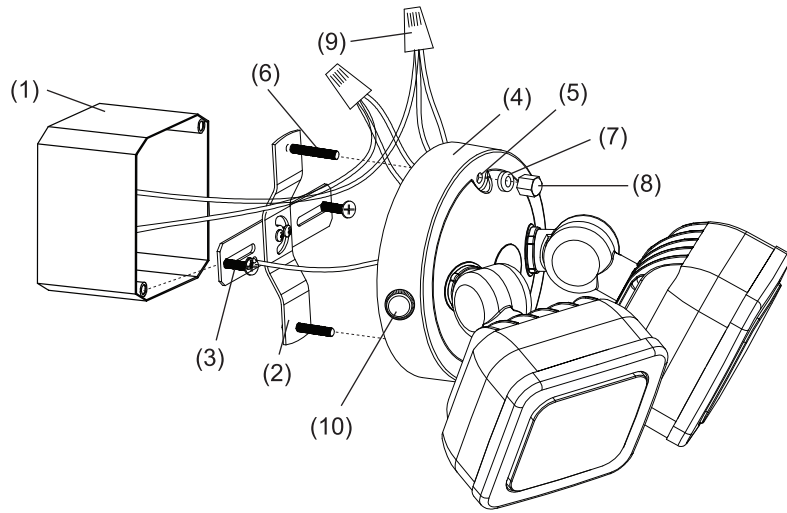
*SAVE THESE INSTRUCTIONS*



## WARNING:

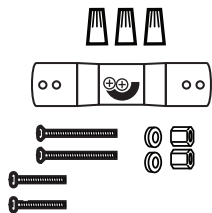
This product may represent a possible shock or fire hazard if improperly installed or attached in any way. Product should be installed in accordance with the owners manual, current electrical codes and/or the current National Electric Code (NEC).

**RISK OF ELECTRIC SHOCK: TURN OFF THE MAIN POWER AT THE CIRCUIT BREAKER BEFORE INSTALLING.**

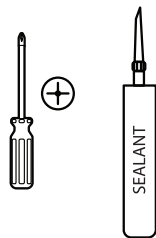


- |                                     |                                |
|-------------------------------------|--------------------------------|
| 1. J-Box (not included)             | 6. Fixture Mounting Screws (2) |
| 2. Fixture Cross Bar (1 piece)      | 7. Rubber Washers (2)          |
| 3. J-Box Mounting Screws (2 pieces) | 8. Canopy Mounting Nuts (2)    |
| 4. Canopy                           | 9. Wire Nuts (3)               |
| 5. Canopy Holes                     | 10. Photocell Sensor           |

## PARTS INCLUDED



## TOOLS REQUIRED

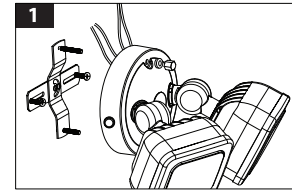


## PRE-INSTALLATION

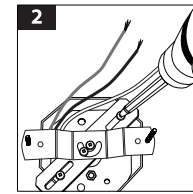
Remove the existing light fixture and disconnect house power supply wires.

## WALL INSTALLATION

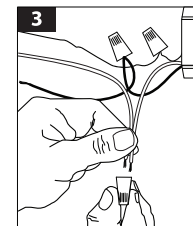
**1.** Unscrew canopy mounting nuts and remove fixture crossbar.



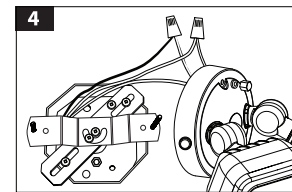
**2.** Pull power supply wires to the side and install fixture crossbar onto J -box with the screws provided.



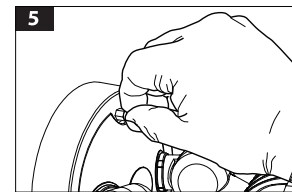
**3.** Using the wire nuts provided, connect bare grounding wire from the fixture to the house ground. Connect the white fixture wire to the neutral house wire. Connect the black fixture wire to the power supply wire.



**4.** Adjust crossbar fixture screws and tighten center swivel screws. Insert canopy holes through fixture mounting screws.



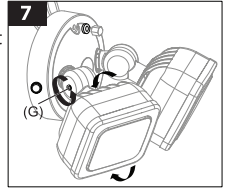
**5.** Position into place and secure fixture by installing washers and canopy mounting nuts. Place rubber washers onto fixture then tighten nuts.



## 6. CAULKING AROUND THE FIXTURE

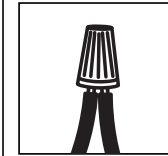
Caulk between the Light Fixture and the wall surface with silicone sealant (not included).

**7.** To adjust the lamp fixture light aiming angle, untighten the adjustable screw on the lamp fixture. Do not completely disengage. Hold the lamp fixture at a selected angle and tighten the screw firmly. (G)



## IMPORTANT WIRING INFORMATION

Always follow the recommended wire strip lengths and wiring combinations when connecting wires.



Hold stripped ends next to each other and align frayed strands (do not twist wires).

Push wires firmly into wire nut. Using your fingers, twist wire nut clockwise until tight. Check for tightness by pulling wires.

## CAUTION

**WARNING:** Risk of fire. Use only on 120 volt 60Hz circuits. Suitable for wet locations. Do not use with dimmers. Before installing your lighting fixture, thoroughly review enclosed installation manual. If you do not have sufficient electrical wiring experience, please refer to a do-it-yourself wiring handbook or have your fixture installed by a qualified licensed electrician. All electrical connections must be in accordance with Local and National Electrical Code (NEC) Standards. Reliable operating temperature is 0°F –120°F. For more information visit [www.feit.com](http://www.feit.com) or call our toll free number 1-866-326-BULB.

## LIGHTING DISTRIBUTION

	Center Beam (Foot Candles)	Beam Diameter
3ft	141	7.2ft
5ft	51	12ft
8ft	19.8	19ft
15ft	5.6	36ft

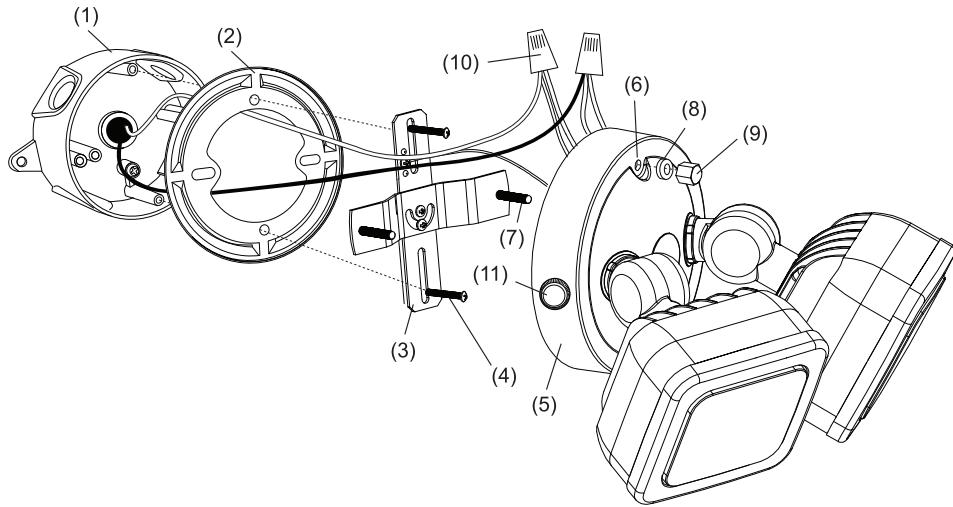
Beam Angle = 100°



### WARNING:

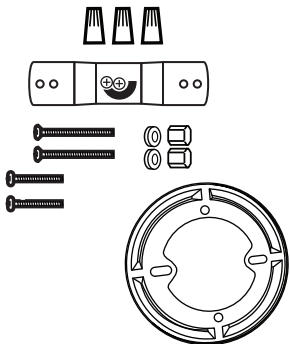
This product may represent a possible shock or fire hazard if improperly installed or attached in any way. Product should be installed in accordance with the owners manual, current electrical codes and/or the current National Electric Code (NEC).

**RISK OF ELECTRIC SHOCK: TURN OFF THE MAIN POWER AT THE CIRCUIT BREAKER BEFORE INSTALLING.**

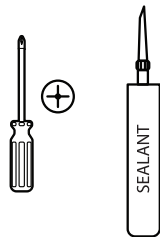


- 1. J-Box (not included)
- 2. Round Plate
- 3. Fixture Cross Bar (1 piece)
- 4. J-Box Mounting Screws (2 pieces)
- 5. Canopy
- 6. Canopy Holes
- 7. Fixture Mounting Screws (2)
- 8. Rubber Washers (2)
- 9. Canopy Mounting Nuts (2)
- 10. Wire Nuts (3)
- 11. Photozell Sensor

### PARTS INCLUDED



### TOOLS REQUIRED

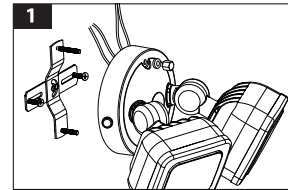


### PRE-INSTALLATION

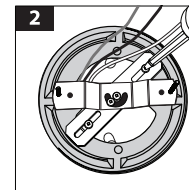
Remove the existing light fixture and disconnect house power supply wires.

### 4" ROUND EXTERNAL J-BOX INSTALLATION

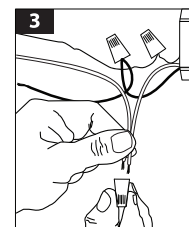
1. Unscrew canopy mounting nuts and remove fixture crossbar.



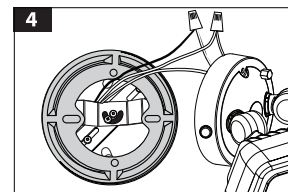
2. Before installing round plate add silicone sealant between the rear of the round plate and J-box. Pull power supply wires through round plate and install round plate along with crossbar onto J-box with the screws provided.



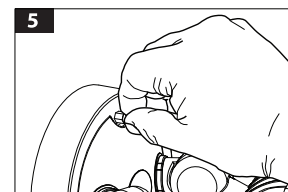
3. Using the wire nuts provided, connect bare grounding wire from the fixture to the house ground. Connect the white fixture wire to the neutral house wire. Connect the black fixture wire to the power supply wire.



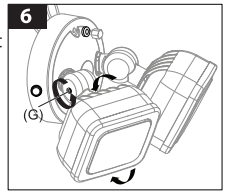
4. Adjust crossbar fixture screws and tighten center swivel screws. Before installing fixture canopy, add silicone sealant between the front of the round plate and fixture canopy. Insert fixture canopy holes through fixture mounting screws.



5. Position into place and secure fixture by installing washers and canopy mounting nuts. Place rubber washers onto fixture then tighten nuts.

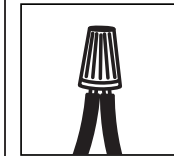


6. To adjust the lamp fixture light aiming angle, untighten the adjustable screw on the lamp fixture. Do not completely disengage. Hold the lamp fixture at a selected angle and tighten the screw firmly. (G)



### IMPORTANT WIRING INFORMATION

Always follow the recommended wire strip lengths and wiring combinations when connecting wires.



Hold stripped ends next to each other and align frayed strands (do not twist wires).

Push wires firmly into wire nut. Using your fingers, twist wire nut clockwise until tight. Check for tightness by pulling wires.

### CAUTION

WARNING: Risk of fire. Use only on 120 volt 60Hz circuits. Suitable for wet locations. Do not use with dimmers. Before installing your lighting fixture, thoroughly review enclosed installation manual. If you do not have sufficient electrical wiring experience, please refer to a do-it-yourself wiring handbook or have your fixture installed by a qualified licensed electrician. All electrical connections must be in accordance with Local and National Electrical Code (NEC) Standards. Reliable operating temperature is 0°F –120°F. For more information visit [www.feit.com](http://www.feit.com) or call our toll free number 1-866-326-BULB.

### LIGHTING DISTRIBUTION

	Center Beam (Foot Candles)	Beam Diameter
3ft	141	7.2ft
5ft	51	12ft
8ft	19.8	19ft
15ft	5.6	36ft

Beam Angle = 100°