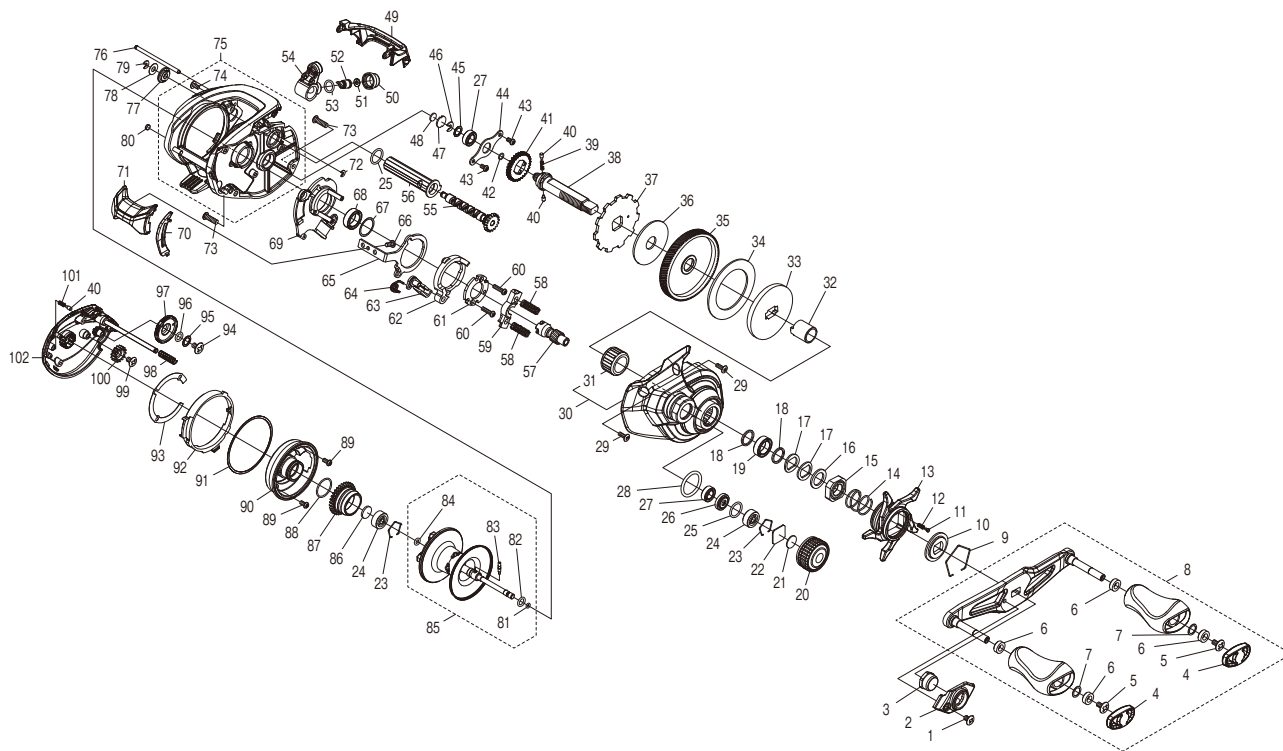


SHIMANO

CURADO

CU200XGM



(51RL625A40X)

#	Part No.	Description	#	Part No.	Description	#	Part No.	Description
1	10DV5	Screw	35	10SRN	Drive Gear	69	144GW	Clutch Guard Assembly
2	144EC	Handle Nut Plate	36	1023U	Drag Washer	70	144EH	Clutch Bar Guide B
3	1013J	Handle Nut	37	13YNT	Anti-Reverse Ratchet	71	144EJ	Clutch Button
4	10SS2	Handle Knob Seal	38	13YNU	Drive Shaft	72	105NB	E Lock
5	10LFA	Screw	39	10JDY	Idle Gear Spring	73	100UV	Screw
6	10PXZ	Bushing	40	10HJG	Idle Gear Pin	74	10E8N	Screw
7	104FH	Washer	41	101K8	Idle Gear A	75	144GX	Frame Assembly
8	144EA	Handle Assembly	42	108WU	O Ring	76	10E2G	Stabilizer Bar
9	10KXW	Click Plate Retainer	43	10S3Y	Screw	77	100G7	Level Wind Guard Bushing
10	10J26	Star Drag Click Plate	44	109T1	Drive Shaft Retainer	78	10FJZ	Washer
11	10MFC	Click Pin	45	10G6D	Washer	79	105NC	E Lock
12	10BT2	Click Spring	46	105NK	E Lock	80	108PY	Washer
13	144ED	Star Drag	47	143CG	Metal Spacer	81	100BH	O Ring
14	10A70	Star Drag Spring	48	14079	Rubber Spacer	82	10TM7	O Ring
15	10A3T	Star Drag Nut	49	144EF	Level Wind Protector	83	10MD0	Spool Clutch Pin
16	10J1P	Star Drag Spacer	50	10FJB	Pawl Cap	84	10EZ7	O Ring
17	109F5	Washer	51	10CFU	Washer	85	144EB	Spool Assembly
18	100SE	Washer	52	10BHQ	Line Guide Pawl	86	10EX5	Bearing Spacer
19	105BK	Ball Bearing	53	108WQ	O Ring	87	101DR	Brake Ring Gear
20	13YNS	Cast Control Cap	54	10R51	Line Guide Pawl Holder Assembly	88	100GW	O Ring
21	10896	Cast Control Spacer (B)	55	144EG	Worm Shaft	89	10L1Q	Screw
22	1085F	Cast Control Spacer (A)	56	13YNV	Level Wind Guard	90	144GZ	Brake Case
23	1054D	Bearing Retainer	57	10SSL	Pinion Gear	91	140UF	Washer
24	105C3	Ball Bearing	58	100U9	Yoke Spring	92	144EK	B Side Plate Cam Lever
25	101GT	O Ring	59	100UH	Yoke	93	144EL	Washer
26	100BL	Bearing Spacer	60	10LV0	Screw	94	103LE	Screw
27	105BP	Ball Bearing	61	100U5	Clutch Cam Retainer	95	10G6D	Washer
28	108WK	O Ring	62	100UK	Clutch Cam	96	108WS	O Ring
29	10LCY	Screw	63	101M5	Clutch Pawl Assembly	97	10SAZ	Brake Dial
30	144GU	A Side Plate Assembly	64	104CP	Clutch Pawl Spring	98	10KNH	Spring
31	1005E	Roller Clutch Bearing	65	13YNW	Clutch Plate	99	103L7	Screw
32	100BM	Roller Clutch Inner Tube	66	10559	Screw	100	10CLF	Idle Gear
33	100BK	Key Washer	67	10190	Washer	101	10GQZ	Click Spring
34	10SSF	Drag Washer	68	10EX8	Ball Bearing	102	144H1	B Side Plate Assembly

Please note that the number of adjusting washers may not be the same as shown in the exploded views.
(Adjustment will vary with each individual product.)

(231113)_002