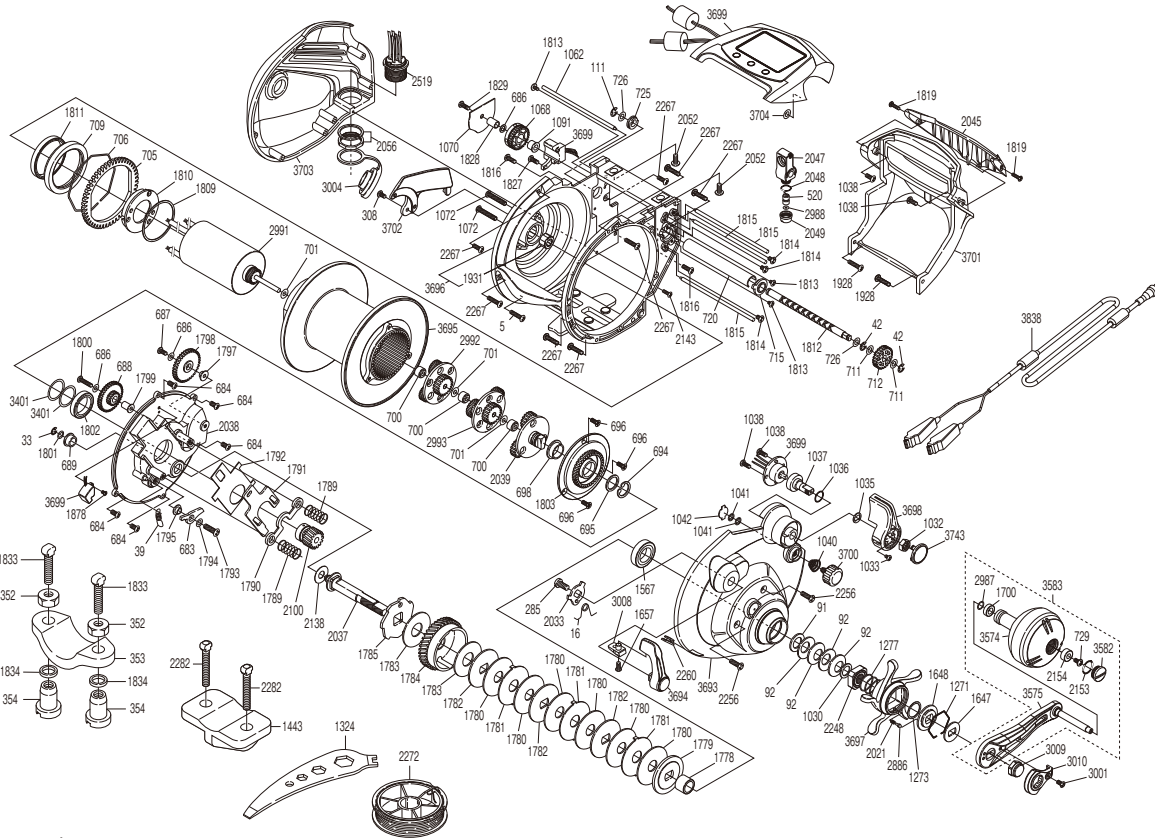


SHIMANO

BeastMaster

BM-9000



(51RG811A20X)

#	Part No.	Description	#	Part No.	Description	#	Part No.	Description
5	10LZE	Screw	1648	10J27	Star Drag Click Plate	2143	10LPH	Screw
16	10JYX	Clutch Spring	1657	10LSQ	Screw	2153	10LAB	O Ring
33	10SNG	E Lock	1700	104UJ	Handle Knob Bushing B	2154	10EU0	Handle Knob Bushing A
39	10CBS	Anti-Reverse Pawl Spring	1778	10BT6	Drive Shaft Sleeve	2248	10QY2	Star Drag Nut
42	105NE	E Lock	1779	10D4H	Pressure Plate	2256	10SLW	Screw
91	104L5	Washer	1780	10L86	Drag Washer	2260	106NW	Line Clip
92	1052E	Drag Spring Washer	1781	10LBB	Eared Washer	2267	10LT0	Screw
111	105NJ	E Lock	1782	10KZW	Key Washer	2519	100XP	Socket Set
285	10F8M	Screw	1783	10CKR	Drag Washer	2886	10B27	Click Pin
308	10LSK	Screw	1784	10Q9X	Drive Gear	2987	104FH	Washer
520	10FFZ	Line Guide Pawl	1785	10A2H	Anti-Reverse Ratchet	2988	10RR9	Washer
683	10PFV	Anti-Reverse Pawl	1789	104BV	Yoke Spring	2991	10RH8	Motor Assembly
684	10M6K	Screw	1790	1047Y	Yoke	2992	10T7A	Reduction Gear Plate A Assembly
686	105EN	Washer	1791	1094R	Clutch Plate	2993	100FY	Reduction Gear Plate C Assembly
687	103GP	Screw	1792	10AYE	Clutch Plate Washer	3001	10R1Q	Screw
688	10PSZ	Worm Idle Gear B	1793	10MG8	Screw	3004	10T2G	Socket Cap
689	10BQ3	Drive Shaft Bushing	1794	10GCY	Washer	3008	101AQ	Clutch Lever Protector
694	10SS8	C Lock	1795	10PKN	Anti-Reverse Pawl Cover	3009	10RHS	Handle Nut
695	109RA	Washer	1797	10PYU	Worm Idle Gear Bushing A	3010	100F6	Handle Nut Plate
696	10ML5	Screw	1798	10MCN	Worm Idle Gear A	3401	10HX0	Washer
698	10MGW	Plate Bushing (Large)	1799	10PYX	Worm Idle Gear Bushing B	3574	10SAK	Handle Knob Assembly
700	10MCW	Plate Bushing (Small)	1800	103LZ	Screw	3575	10SAJ	Handle Shank Assembly
701	109R9	Washer	1801	10J8D	Washer	3582	10S6P	Handle Knob Seal
705	10CUW	Counter Gear A	1802	108PG	Ball Bearing	3583	10RKY	Handle Assembly
706	106PU	Gear Retainer	1803	10HSK	Spool Plate	3693	10U1R	Right Side Plate Assembly
709	10PWQ	Bearing Rim	1809	10GD3	Washer	3694	10U1S	Clutch Lever Assembly
711	105KF	Washer	1810	10F1R	Motor Holder	3695	10U1T	Spool Assembly
712	10N99	Worm Gear	1811	104PK	Ball Bearing	3696	10U1U	Frame Assembly
715	104T6	Worm Bushing A	1812	10586	Worm Shaft	3697	10U1V	Star Drag
720	10NMQ	Level Wind Guard	1813	10MPG	Screw	3698	10U1W	Lever Switch
725	104SX	Worm Bushing B	1814	103L1	Screw	3699	10U1X	Counter Unit Assembly
726	109RN	Washer	1815	10PCN	Stabilizer Bar A	3700	10U1Y	Cast Control Cap
729	103E9	Screw	1816	10M2A	Screw	3701	10U1Z	Level Wind Protector
1030	10BR2	Star Drag Washer	1819	10MQ2	Screw	3702	10U20	Motor Holder B
1032	10NAN	Lever Switch Nut	1827	103GQ	Screw	3703	10U21	Left Side Plate
1033	103N3	Screw	1828	106PY	Counter Gear Bushing B	3704	10HV1	Washer
1035	10NAQ	Key Washer	1829	103LK	Screw	3743	13XFP	Lever Switch Sticker
1036	10NAR	O Ring	1829	10MT4	Screw			
1037	10N7Z	Lever Insert Shaft	1928	10M32	Screw			
1038	10LZF	Screw	1931	10F5G	Roller Clutch Bearing			
1040	10BRG	Spool Tension Spring	2021	10988	Click Spring			
1041	105SB	Cs Lock	2033	10871	Clutch Cam Assembly	352	105N9	Rod Clamp Nut B (Accessory)
1042	1085L	Cast Control Spacer	2037	105D3	Drive Shaft	353	10AR5	Rod Clamp (Accessory)
1062	10PCL	Stabilizer Bar B	2038	105WW	Set Plate	354	1046P	Rod Clamp Nut A (Accessory)
1068	10MZL	Counter Gear B	2039	10MM7	Reduction Gear Plate B Assembly	1443	10J9P	Rod Clamp (Accessory)
1070	10QC8	Cord Cover	2045	10B3M	Level Wind Cover Sticker	1833	10A79	Rod Clamp Bolt (Accessory)
1072	10MC0	Screw	2047	10P46	Line Guide Assembly	1834	10GA8	Rod Clamp Nut Washer(Accessory)
1091	106PW	Counter Gear Bushing	2048	108WQ	O Ring	2282	101UW	Rod Clamp Bolt (Accessory)
1271	10KXX	Click Plate Retainer	2049	10FJD	Pawl Cap			
1273	10G6M	Washer	2052	103HE	Screw	1324	10MJ6	Wrench (Accessory)
1277	10HZ2	Star Drag Spring	2056	10BGS	Socket Nut Set	2272	10SB8	Bobbin With Line (Accessory)
1567	10KXA	Ball Bearing	2100	106VY	Pinion Gear Assembly	3193	10CW0	Line Picker (Accessory)
1647	107QM	Drive Shaft Shield	2138	10GN2	Washer	3838	13XLW	Cable Assembly (Accessory)

Please note that the number of adjusting washers may not be the same as shown in the exploded views.
(Adjustment will vary with each individual product.)

(240619)_003