

USER'S MANUAL

BV12.1MCH

12.1" (307mm) WIDESCREEN FLIP-DOWN TFT MONITOR
INCLUDING TWO-PAIRS OF DUAL CHANNEL HEADPHONES

BOSS[®]
AUDIO SYSTEMS

BOSS Audio Systems
3451 Lunar Court • Oxnard, CA 93030
www.bossaudio.com | 800.999.1236
tech support: www.bossaudio.com/support



0114

USER'S MANUAL

BV12.1MCH

12.1" (307mm) WIDESCREEN
FLIP-DOWN TFT MONITOR

INCLUDING TWO-PAIRS OF DUAL CHANNEL HEADPHONES



BOSS[®]
AUDIO SYSTEMS

Contents

Caution	2
Product Controls and Functions	4
-Unit	5
-Remote Control Diagram	6
TFT Menu Setup	7
1. Picture Display Setup	7
2. Audio	7
3. OSD	7
4. System setting	7
Setup Menu	8
1. System Setup	8
2. Language Setup	9
3. Video Setup	10
Connection Diagram	11
Installation	12
Interchangeable Housing Change Diagram	13
Troubleshooting	14
Specifications	15

Caution

Please read and observe all warnings and instructions in this owner's manual and those marked on the unit. Retain this booklet for future reference.

There are two kinds of caution symbols as follows:



WARNING

This symbol is intended to alert the user on the presence of dangerous voltage within the product's enclosure that may cause electric shock to you.

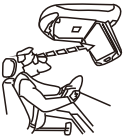


CAUTION

The exclamation point within an equilateral triangle is intended to direct attention to the presence of important operating and maintenance (servicing) instructions in the literature accompanying the product.



WARNING



Hazard! do not operate this unit unless vehicle is parked in safe and legal area.



Do not mount the product where it will obstruct the deployment of the airbag or in an area where it would affect the vehicular control. Also be careful to avoid mounting the product where it can become hazardous during sudden stops or in the event of an accident.



Do not try and service these products yourself. Seek only a qualified service center or factory service center.



Do not place any liquids near the monitor. If any liquid is spilled on the unit, pull over to the side of the road, turn the ignition completely off and

dry the product with a towel. Do not operate the equipment again until all liquids have either evaporated or you have the unit inspected by a qualified technician at your local authorized dealer.



Be careful not to drop or apply pressure to the front panel of your video monitor. If the screen cracks due to misuse, your warranty will be void!



Be careful not to overload your cigarette lighter plug by adding more than one device at a time.



Use only a damp cloth to clean the screen and use only purified water on the cloth, wring out all excess water prior to wiping the screen. Do not use any cleaners or chemicals to clean the screen. In most cases a dry cloth will do!

Caution

CAUTION



Quality installations are best performed by qualified and certified installers.



Watching the monitor for an extended period of time without the engine running may deplete the vehicle's battery, to the point where the engine can no longer be started.



Don't touch the unit if there is lightning as this may cause an electric shock to you.



This product is designed for operation with a 12 Volt DC, negative ground vehicle. It is not suitable for operation under other conditions or voltages.



Do not cover the heater ducts or vents as this may cause a fire or electric shock



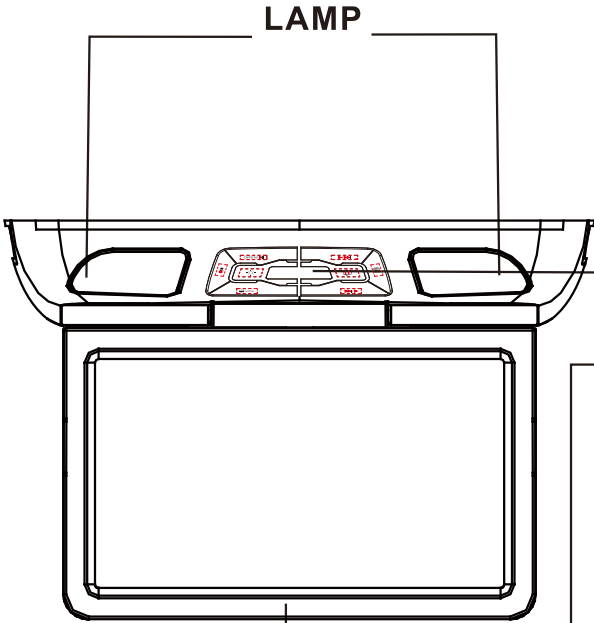
Do not bring magnetic items such as credit cards and other cards with magnetic strips near the monitor as this may cause damage to the unit and/or magnetic item



Check Point

1. The operating temperature of this product is limited to $-10^{\circ}\text{C} \sim +60^{\circ}\text{C}$.
Your vehicle can reach temperatures up to 80°C in the summer time.
2. From time to time when your vehicle is extremely hot or cold you must allow time for your air conditioner or heater to cool or heat the vehicle and for operating temperatures to return to normal operating ranges. Your monitor will return to its normal functions when these operating temperature are achieved.
3. Your optimum picture quality is achieved when you are directly in front of the monitor (± 30 degrees).
4. Do not open covers and repair yourself. Refer servicing to qualified personnel.
5. DVD Players use an invisible laser beam which can cause hazardous radiation exposure. Be sure to operate the unit correctly as instructed.
6. Do not turn ignition off while a disc is playing. It can cause damage to the DVD Player.

Product Controls and Functions



Remote Control Eye.

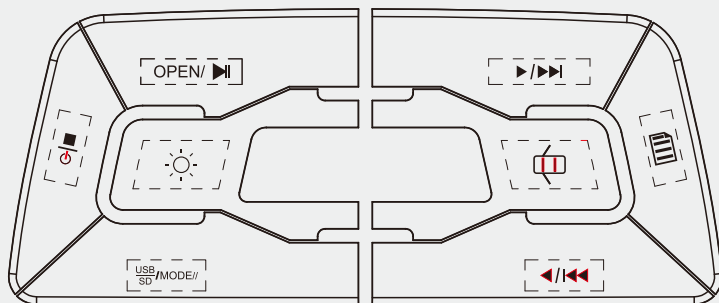
This allows transmitting of the remote control's IR signals for controlling all functions of your monitor.



Wireless Infrared (IR) Transmitter.

IR audio signals are transmitted wirelessly to optional IR headphones

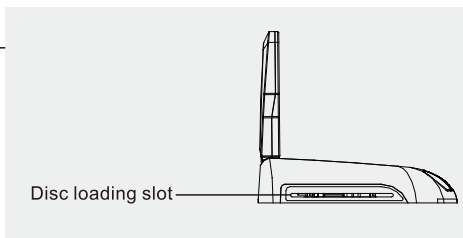
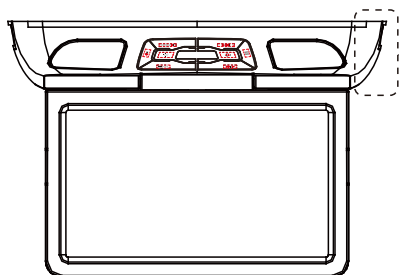
Product Controls and Functions



REMARKS:

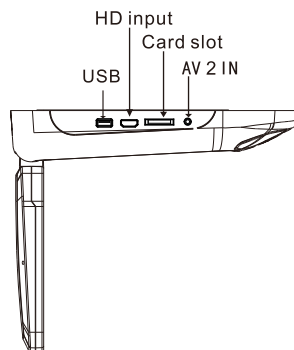
Following functions work when long pressing 1-2 seconds.

"OPEN" "▶▶" "◀◀" "◀" "▶" "USB/SD" "■" "■"

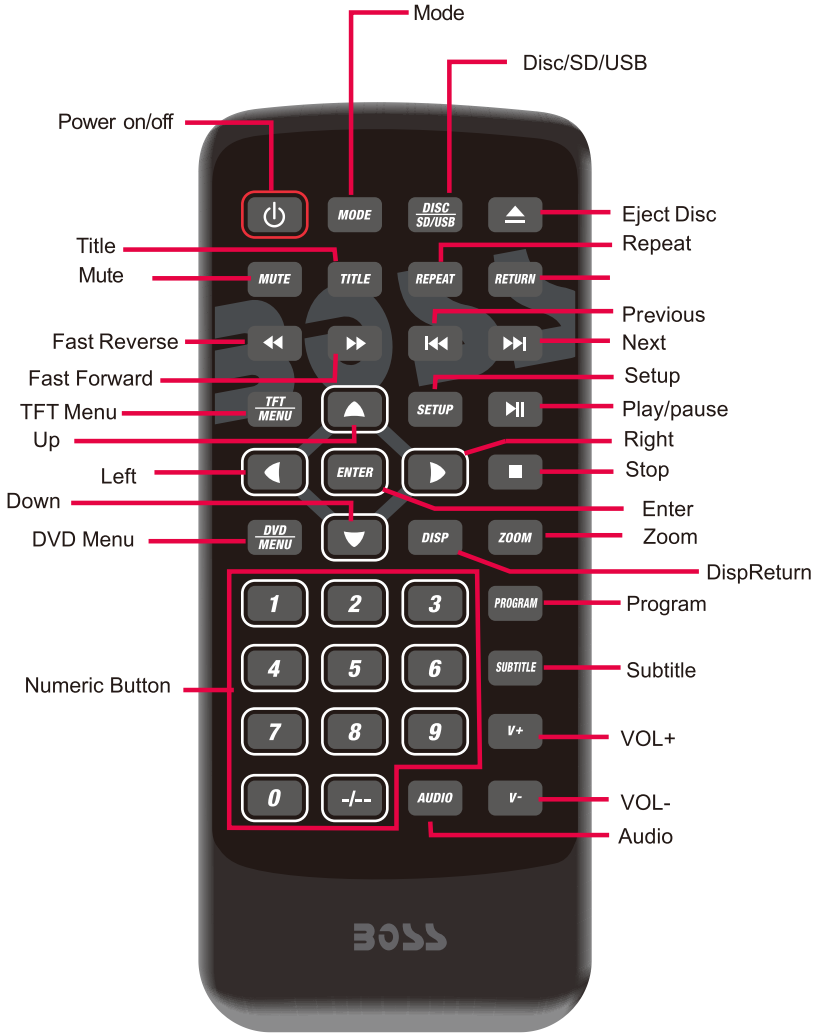


* Caution

Do not bring magnetic items such as credit cards or other cards with magnetic strips near the monitor as this may cause damage to the unit and/or magnetic item.



Remote Control Diagram



TFT Menu Setup

1、 PICTURE DISPLAY SETUP



Contrast/Brightness/Saturation/
Sharpness adjustments

2、 AUDIO



Volume: Speakers Volume range 0-60

IR: Dual channels(A or B) can be selected
or turned off

FM: Frequencies range: 87. 7-107. 9MHz

3、 OSD



Language and screen position adjustments

4、 SYSTEM SETTING



Reset: Return to factory settings

Scale: Screen display 16:9 and 4:3

Sleep: Auto turn off time setting from 10
to 120 minutes

SETUP KEY

• SETUP KEY

Press the SETUP button to enter the SETUP MENU as shown below.

Inside the DVD SETUP MENU, three categories SYSTEM, LANGUAGE, VIDEO, could be chosen.

Users can adjust or choose different options included in the DVD disc that is playing.

1. SYSTEM SETUP

A. TV SYSTEM



B. POWER RESUME



C. TV TYPE



D. PASSWORD (0000)



E. RATING



F. DEFAULT



SETUP MENU

2. LANGUAGE SETUP

A. OSD LANGUAGE



B. AUDIO LANG



C. SUBTITLE LANG



D. MENU LANG



SETUP MENU

3. VIDEO SETUP

A. BRIGHTNESS



B. CONTRAST



C. HUE



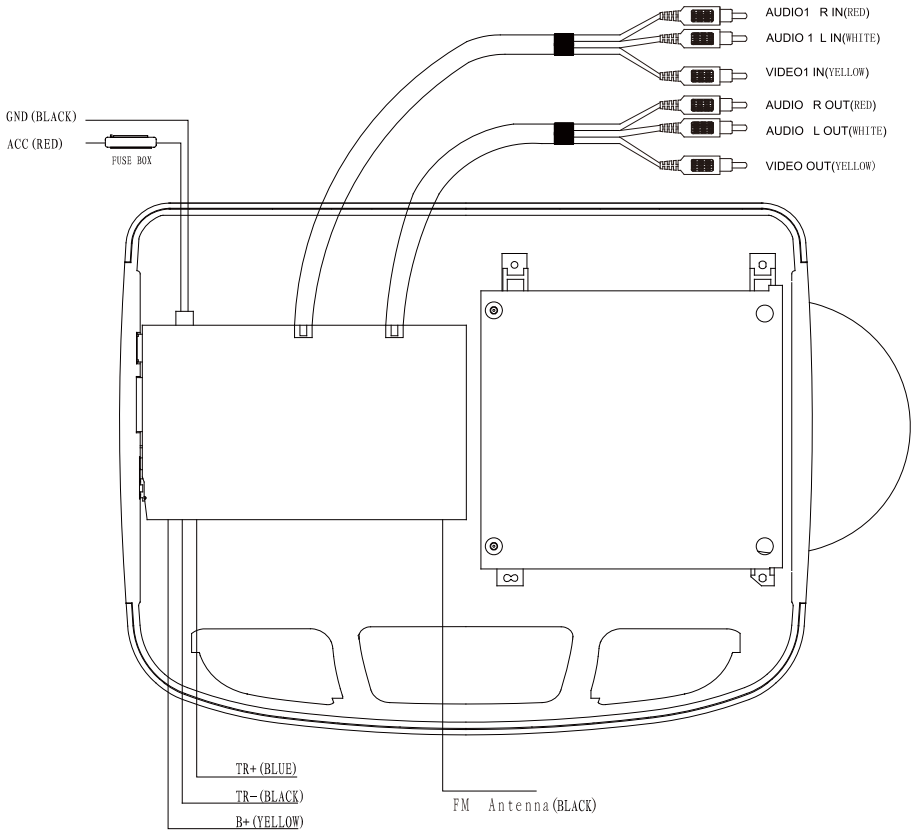
D. SATURATION



E. SHARPNESS



Connection Diagram

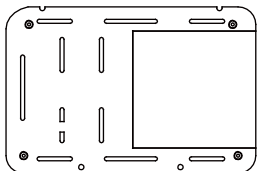


*How to connect the DOOR TRIGGER wire

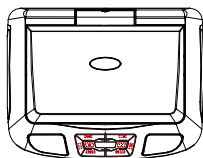
1. Connect yellow positive (+) wire
2. Check your vehicle's door trigger is positive "+" or negative "-"
3. Connect unit one correct trigger wire (positive "+" or negative "-") with vehicle's door trigger in accordance

Installation

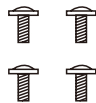
1. Open the box and check the contents.



Mounting Plate

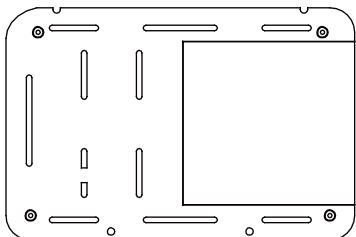


UNIT



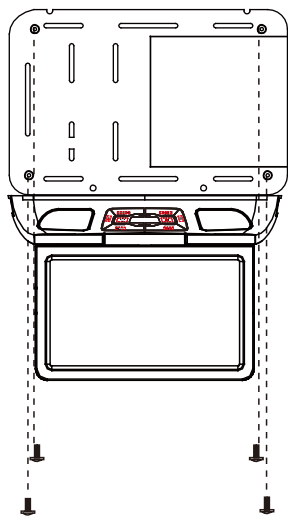
SCREW B

2. Align mounting plate with installation position and secure plate with screws



Use the correct screws that matches the car.

3. Tighten the unit with the supplied SCREW B.

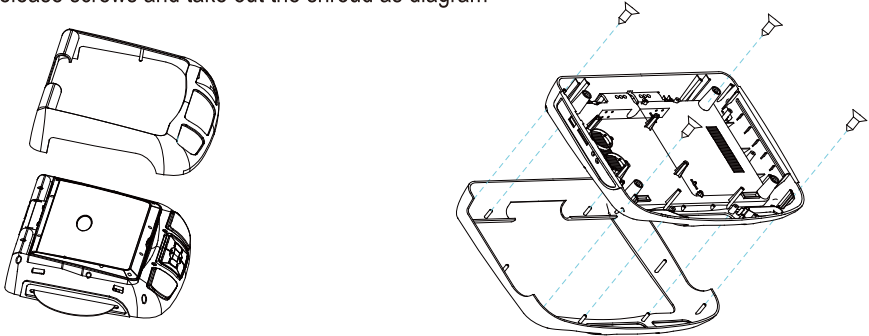


Interchangeable Housing Change Diagram

Assembling the shroud

Begining by hooking the area and press the shroud over the pod. The shroud will snap in place. Tighting the shroud by screws supplied. Removing shroud

Release screws and take out the shroud as diagram

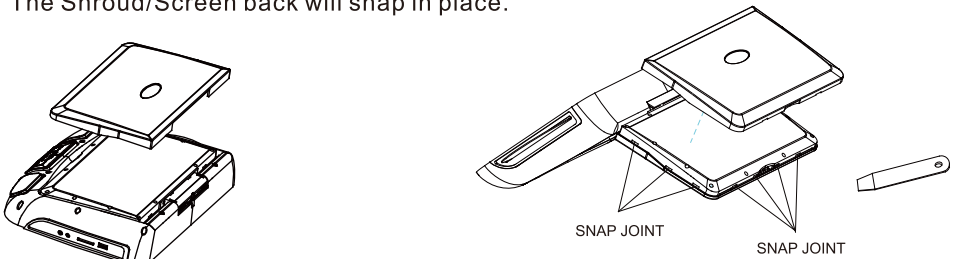


Removing Screen back From The Housing

working on a soft surface to avoid damaging the plastic. Insert the supplied pry tool between the Housing Screen back, then press the pry tool to release the Screen back.

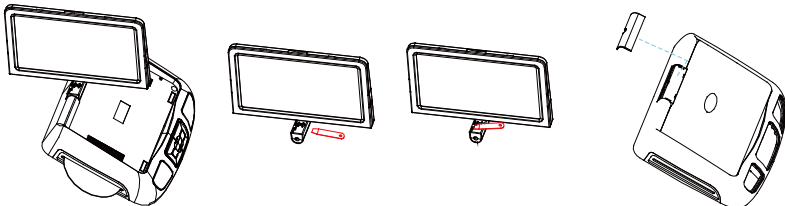
Assembling the screen back

Begin by hooking the area and press the Shroud/Screenback over the pod. The Shroud/Screen back will snap in place.



Swivel cover moving/assembling

Use supplied small tool to insert the hook hole, and get the cover off. Pressing the swivel cover over the swivel, the cover will snap in place



Troubleshooting

Symptom	Items to check	Actions to be Taken
Button does not work	Is the power turned on?	Check the car battery capacity
No sound	<p>Is the audio cable set to receive the DVD signal output?</p> <p>Is the audio cable connected securely?</p> <p>Is the monitor connected with the audio turned on ?</p> <p>Is the digital audio output set in the correct position?</p>	<p>Select the correct input mode for the audio receiver.</p> <p>Connect the audio cable into the jacks securely.</p> <p>Turn on the monitor connected to the audio cable does not work properly</p> <p>Set the Digital Audio Output to the correct position, and then turn on the DVD player by pressing the POWER button.</p>
Remote control does not work properly.	<p>Is the remote control facing the remote sensor?</p> <p>Is the distance too far?</p> <p>Is there any obstacle in the middle?</p> <p>Is the battery exhausted?</p>	<p>Point the remote control to the remote sensor of the product.</p> <p>Use the remote control within 5m</p> <p>Remove the obstacle.</p> <p>Replace with new batteries</p> <p>Check antenna connection.</p>

Specifications



Check point

When a disc is brought from a cold environment to a hot one , there may be condensation on the face of the disc or pick up lens. This can affect the operation of the unit.

- 1.Remove the disc from the DVD player.
- 2.Turn on the power and leave it on for an hour to vaporize the condensation.
- 3.You can operate the DVD player without any problems.

Screen Size	12.1 " TFT LCD Panel
Power	DC12V
Consumption	20W
Screen Format	16:9
Resolution	1280(H)x800(V)xRGB
Color System	NTSC/PAL /Auto Selection
A/V Input	2EA
A/V Output	1EA
HD Input Resolution	UNDER 1080P
HD Input Refresh Frequency	50HZ/60HZ
Dimension	366.5(W)X300(D)X63.5(H)mm/14.4(W)X11.8(D)X2.5(H)800

