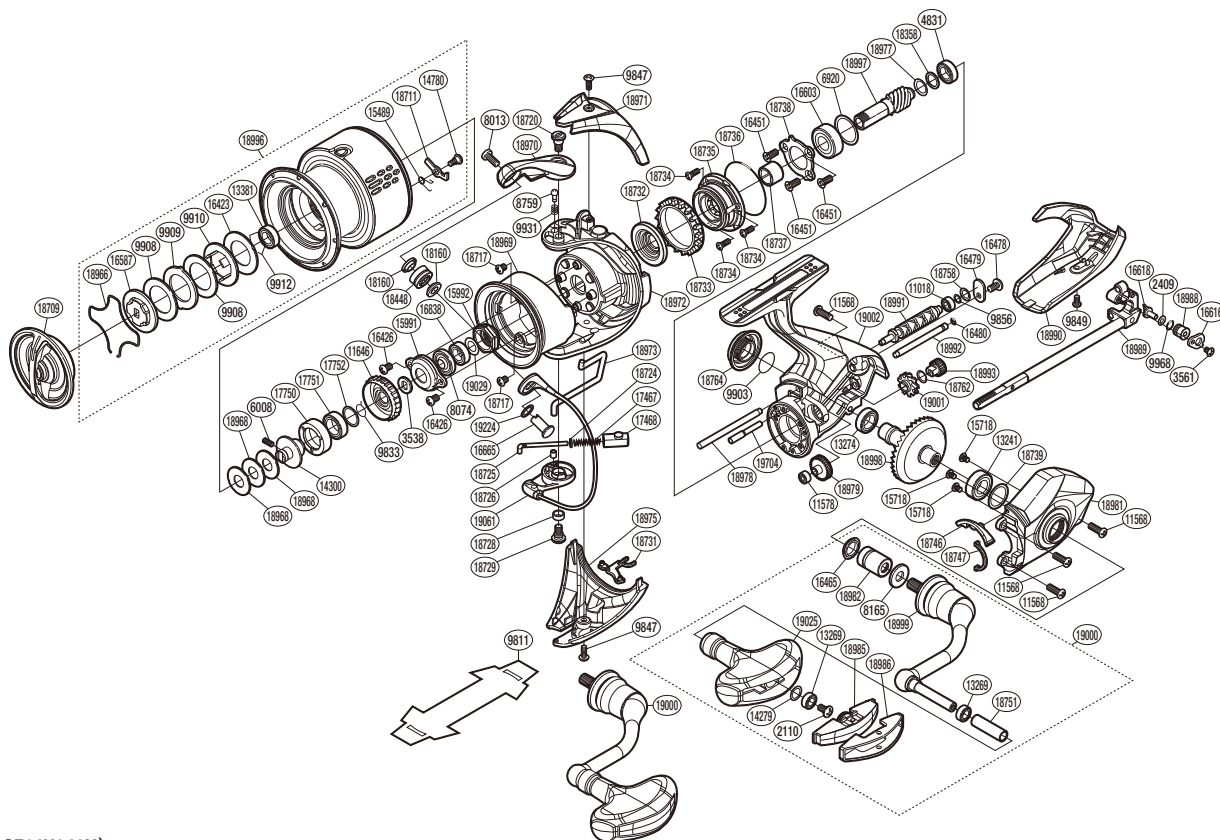


SHIMANO

STELLA

STL-4000XG



(51SF14H043X)

#	Part No.	Description	#	Part No.	Description	#	Part No.	Description
2110	103E9	Screw	16451	10ML6	Screw	18751	1022F	Handle Knob Pipe
2409	1059U	Spacer	16465	10PXU	Handle Shaft Seal	18758	10TK0	Washer
3538	103NX	Spool Support	16478	103EB	Screw	18762	10TJT	Washer
3561	10MT4	Screw	16479	10ATB	Worm Shaft Retainer	18764	10DK4	Handle Screw Cap
4831	104JQ	Ball Bearing	16480	10JAB	O Ring	18966	1006X	Drag Washers Retainer
6008	10PN2	Set Screw	16587	10QBY	Key Washer	18968	10BSK	Spool Washer
6920	107JT	Spacer	16603	104VF	Ball Bearing	18969	10S34	Rotor Brim
8013	10K40	Screw	16616	10HAH	Oscillating Pawl Cover	18970	10S33	Bail Arm
8074	107F2	Bearing Water Proof	16618	106VM	Oscillating Pawl	18971	10033	Bail Spring Cover
8165	10FJ6	Washer	16665	10L02	Line Roller Support	18972	100U3	Rotor Assembly
8759	106UX	Click Pin	16838	103B3	Main Shaft Spacer	18973	1005L	Bail Trip Lever
9833	107V2	Ratchet Spring	17467	10R2P	Bail Spring	18975	10031	Bail Hold Support Guard
9847	10CYU	Screw	17468	10R2E	Bail Spring Guide B	18977	10053	Washer
9849	106ZG	Screw	17750	10TQH	Bearing Housing	18978	1006F	Oscillating Guide A
9856	10HZ1	Washer	17751	10EX8	Ball Bearing	18979	10074	Idle Gear
9903	108WA	O Ring	17752	10GHN	Washer	18981	10TDB	Side Cover Assembly
9908	102ZP	Drag Washer	18160	1020L	Bearing Spacer	18982	10070	Handle Shaft Cover B
9909	10BCP	Eared Washer	18358	10GD8	Washer	18985	1006T	Handle Knob Seal
9910	10B9D	Key Washer	18448	101BJ	Line Roller Set (With Bearing)	18986	1005Q	Handle Knob I.D. Plate
9912	10GEW	Bearing Retainer	18709	10S17	Drag Knob Assembly	18988	1005H	Oscillating Slider Bushing
9931	10CGZ	Click Spring	18711	10TJX	Drag Click	18989	10TDY	Main Shaft Assembly
9968	108W9	O Ring	18717	101C6	Screw	18990	10032	Rear Protector
11018	10PDA	Ball Bearing	18720	10DK8	Screw	18991	1006E	Worm Shaft
11568	10M2C	Screw	18724	101D9	Spring Guide A Support	18992	1006Z	Oscillating Guide B
11578	10PC0	Ball Bearing	18725	10DJN	Bail Spring Guide A	18993	10SM7	Idle Gear (Small)
11646	107PS	Drag Click Ratchet	18726	10DKC	Bail Spring Guide A Bush	18996	1006U	Spool Assembly
13241	104JD	Ball Bearing	18728	101D0	Bail Trip Cam Bushing	18997	1005R	Pinion Gear
13269	104VX	Ball Bearing	18729	10S9Q	Screw	18998	1006B	Drive Gear
13274	104PP	Ball Bearing	18731	10TJS	Rotor Side Cover	18999	10TDZ	Handle Shank Assembly
13381	104JT	Ball Bearing	18732	101D5	Rotor Ring	19000	10066	Handle Assembly
14279	10G8G	Washer	18733	10DK7	Friction Ring	19001	1006V	Idle Gear (Large)
14300	10LTS	Bearing Bushing	18734	101D7	Screw	19002	10S6F	Body Assembly
14780	10A6F	Screw	18735	10S2L	Roller Clutch Assembly	19025	1005M	Handle Knob
15489	10BQE	Drag Click Spring	18736	10DKD	O Ring	19029	101M1	Washer
15718	1055G	Screw	18737	10DJY	Roller Clutch Inner	19061	10DV2	Bail Assembly
15991	1076P	Rotor Nut Lock Plate	18738	10DJZ	Bearing Retainer	19224	1002S	Washer
15992	1080X	Rotor Nut	18739	10RYR	Washer	19704	10TC8	Idle Gear B Shaft
16423	10C1D	Drag Washer	18746	10DJK	Bail Trip Strike			
16426	103LB	Screw	18747	10DKA	Flange Water Proof	9811	10PBS	Reel Seat Spacer (Accessory)

Please note that the number of adjusting washers may not be the same as shown in the exploded views.
(Adjustment will vary with each individual product.)

(240627)_009