



Gravity Water Closet Series Installation Instructions

Featuring Centriflo™ flushing technology

THE RIGHT CHOICE

We thank you for your purchase. Our products are 100% tested but should you have any questions, please contact us by phone or on our web site at sloan.com



⚠WARNING: Vitreous china can chip or break if the bolts or nuts are over-tightened or if mishandled.

- Check all local plumbing and building codes.
- Check for any damage to the new water closet before installation.

RECOMMENDED TOOLS AND MATERIALS

- 10" adjustable wrench
- Level
- Screwdriver
- Putty Knife
- Sponge
- ½" Nut Driver or Socket
- Safety Glasses
- Hacksaw
- Wax Seal or Outlet Gasket
- Supply Shut-off Valve
- Tape Measure
- Tubing Cutter
- Flexible/Braided hose or copper line water supply with 7/8" connector

BEFORE YOU BEGIN

1. Observe all local plumbing and building codes.
2. Carefully inspect the new toilet and components for damage.

NOTE: Porcelain toilets are extremely fragile.

Please handle with care to avoid breakage.

3. Plumbing system requirements:

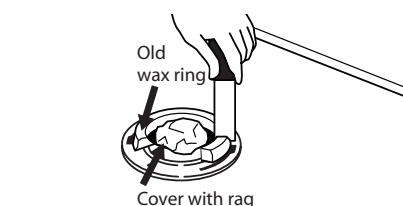
Minimum supply pressure: 20 psi

Maximum supply pressure: 80 psi

RETROFIT INSTALLATIONS

1. REMOVAL OF EXISTING WATER CLOSET

- Turn the water supply off. Flush the toilet, and sponge out any remaining water.
- Disconnect the water supply connection.
- Remove the bolt caps and nuts, the toilet, and T-bolts from the closet flange.
- Using a putty knife, completely remove old wax seal from floor and closet flange.

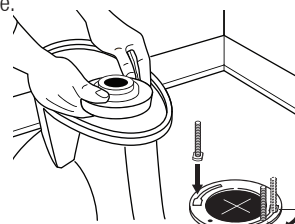


⚠WARNING Hazardous gases can escape through the waste pipe if new water closet is not installed quickly. A temporary fix: place a large rag in the waste pipe.

NEW INSTALLATIONS

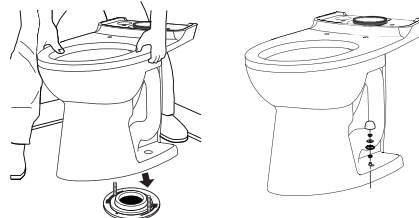
2. INSTALLING TOILET BOWL

- Insert new T-bolts into closet flange.
- Set the toilet bowl on its side or upside down on protective padding.
- Place and press a new wax seal around the toilet bowl outlet horn.
- Remove the temporary rag (if used) from the closet flange.



IMPORTANT Do not lift or rock the toilet after placement. A new gasket must be installed if the seal is broken.

- Carefully align and lower the toilet flange over the T-bolts.
- Evenly apply your full body weight onto the top of the toilet bowl until it makes full contact with floor to seal.
- If the bolts extend more than ¼" (6 mm) from the top of the nut, cut off any excess with a hacksaw, and file the cut edges.



IMPORTANT Product damage can occur if using a sawblade to cut off the excess T-bolt length. Make sure vitreous china is protected.

- Place the plastic bolt cap bases, washers, and nuts onto the T-bolts.
- Alternately tighten the nuts until snug. Verify that toilet is leveled.
- Snap the bolt caps over the bolt onto the cap base.

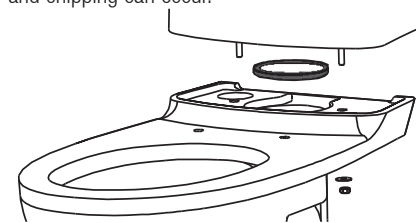


IMPORTANT Do not overtighten the nuts, breakage and chipping can occur.

3. INSTALL TANK TO BOWL

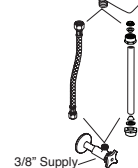
- Turn the tank upside down and rest on protective padding.
- Install the tank gasket over the bottom threads of the flush valve making sure that the tank gasket covers the flush valve nut and the tapered side is toward the bowl (away from the tank).
- Lift the tank, right side up and lower onto the bowl by centering the gasket and aligning the tank bolts over the corresponding holes on the bowl.
- Secure with metal washers and nuts.
- Tighten nuts alternately to achieve a watertight seal at the gasket and ensure the tank is level.

IMPORTANT Do not overtighten the nuts, breakage and chipping can occur.



4. CONNECT WATER SUPPLY LINE

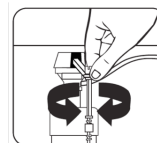
- Connect the water supply valve to the inlet supply valve on the bottom of the toilet tank.
- NOTE:** Braided flexible hose or rigid copper line (not supplied) can be used.
- Open the water supply valve and allow the water to fill the tank until the fill valve shuts off.
- Flush the toilet and check for leaks at the connections and the base of the tank. Repeat this several times.
- If desired place a bead of caulk (not supplied) around the base of the toilet bowl where it contacts the floor.



5. ADJUSTING WATER LEVEL

- Your Sloan Toilet is tested and preset at the factory to provide the desired gallons per flush. However, if needed you may adjust the water level manually.
- With water turned on, set float cup to desired level, by turning water level adjustment screw. When adjusting float cup, flush tank first. Then make adjustment while tank is filling.
- To adjust tank water, turn adjustment screw clockwise to raise water level or counter clockwise to lower water level. Once adjusted, flush toilet and check new level. Repeat if necessary.

HINT: When you twist adjustment screw 8 times - float moves ~ ½" (13mm).



6. INSTALL TANK LID AND SEAT

- Place lid onto tank and install toilet seat (not included) according to seat manufacturer's instructions.

7. CLEANING AND MAINTENANCE

- Clean water closet at least once per week with a cleaner safe for vitreous china. Spray and wipe clean using soft cloth. Soft abrasive cleaners may be used to remove stains.
- If you live in a hard water area, you should make certain that the holes under the rim are kept clean and free of mineral build up for proper bowl performance. Use a long-handled brush to clean the rim holes.

CAUTION Do not use any in-tank cleaners or deodorizers. Products containing chlorine (calcium hypochlorite) can seriously damage your toilet fittings in the tank. This damage can cause leakage and property damage.

SLOAN GRAVITY TOILET

TROUBLESHOOTING GUIDE

1. Poor Flush.

A. Confirm tank is refilling to the water level marked on the refill tube. Adjust as needed following instructions in Step # 5.

B. Check bowl (main jet, rim holes and trapway), drain line, and vent for blockage.

2. Tank takes a long time to fill.

A. Make sure water supply valve is fully open.

B. Flush the supply line to clear any debris.

C. Check water pressure supply, operating range is 5-80 psi

3. Water continues to run on and will not shut off.

A. Remove tank lid and confirm the flapper chain is not kinked and has adequate slack to allow flapper to fully seal.

B. Inspect the rubber seal on the flapper and the top edge of the flush valve to ensure they are clean and free from mineral build-up or debris. Replace flapper if required.

4. Handle does not activate flush.

A. Remove tank lid and check the flapper chain connection and reattach.

B. Confirm chain has adequate slack by flushing the toilet. Adjust as needed.

5. Toilet seems to be leaking (water on floor).

A. Check the tank-to-bowl gasket to ensure it is aligned properly and tighten the tank bolts.

B. Check tank for cracks. If cracked the tank must be replaced.

C. Check tank bolts. Rubber washers may be corroded or bolts may be loose. Replace or tighten as necessary.

NOTE: Be careful not to overtighten nuts on tank as this may result in cracking the tank.

D. Check around the base of the toilet for leaks. If water is coming from underneath the toilet should be removed to inspect the wax gasket and replaced as needed.

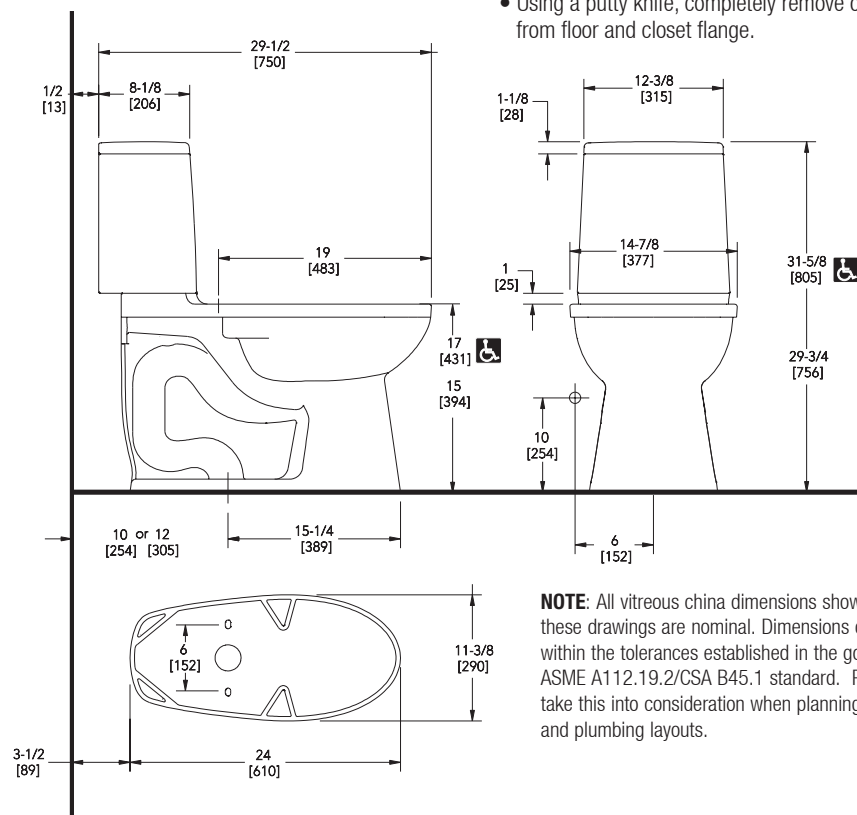
For more complete up-to date information please visit us at sloan.com

If further assistance is required, If you should still have trouble contact Sloan Technical Support at: 1-888-SLOAN-14 (1-888-756-2614)

LIMITED WARRANTY

Sloan Valve Company warrants its products to be made of first class materials, free from defects of material or workmanship under normal use and to perform the service for which they are intended in a thoroughly reliable and efficient manner when properly installed and serviced, for a period of three years (one year for special finishes) from date of purchase. During this period, Sloan Valve Company will, at its option, repair or replace any part or parts which prove to be thus defective if returned to Sloan Valve Company, at customer's cost, and this shall be the sole remedy available under this warranty. No claims will be allowed for labor, transportation or other incidental costs. This warranty extends only to persons or organizations who purchase Sloan Valve Company's products directly from Sloan Valve Company for purpose of resale.

THERE ARE NO WARRANTIES WHICH EXTEND BEYOND THE DESCRIPTION ON THE FACE HEREOF. IN NO EVENT IS SLOAN VALVE COMPANY RESPONSIBLE FOR ANY CONSEQUENTIAL DAMAGES OF ANY MEASURE WHATSOEVER. NOTE: IN NO EVENT SHALL THE SLOAN VALVE COMPANY BE LIABLE FOR INCIDENTAL DAMAGES, RESULTING FROM IMPROPER INSTALLATION, OR FOR DAMAGES CAUSED BY NEGLIGENCE, ABUSE OR ALTERATION.



NOTE: All vitreous china dimensions shown in these drawings are nominal. Dimensions can vary within the tolerances established in the governing ASME A112.19.2/CSA B45.1 standard. Please take this into consideration when planning rough-in and plumbing layouts.



SLOAN VALVE COMPANY

10500 Seymour Avenue
Franklin Park, IL 60131
Phone: 1.800.9-VALVE-9 or 1.847.671.4300
Fax: 1.800.447.8329 or 1.847.671.4380
sloan.com

Copyright © 2021 Sloan Valve Company

Code: 0816861

Rev. 2 03-21

The information contained in this document is subject to change without notice.