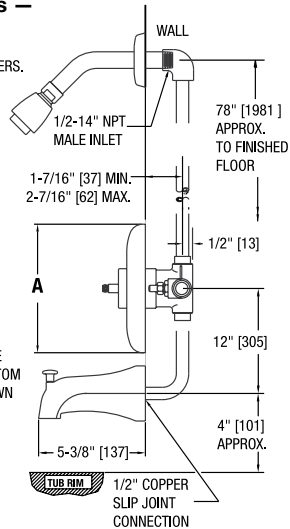
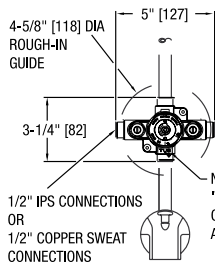


**Figure 1: Rough-in Dimensions – Tub and Shower**

ALL DOTTED LINE PIPING SUPPLIED BY OTHERS.

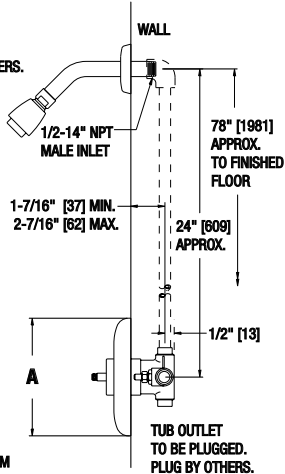
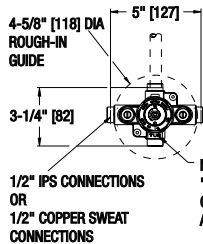


NOTE: 'T' TO BE ON BOTTOM AS SHOWN

| Model # | "A"  |       |
|---------|------|-------|
| e705    | 6.5" | 165mm |
| e707    | 8.5" | 216mm |
| e710    | 6.5" | 165mm |

**Figure 2: Rough-in Dimensions – Shower only**

ALL DOTTED LINE PIPING SUPPLIED BY OTHERS.



NOTE: 'T' TO BE ON BOTTOM AS SHOWN

TUB OUTLET TO BE PLUGGED. PLUG BY OTHERS.

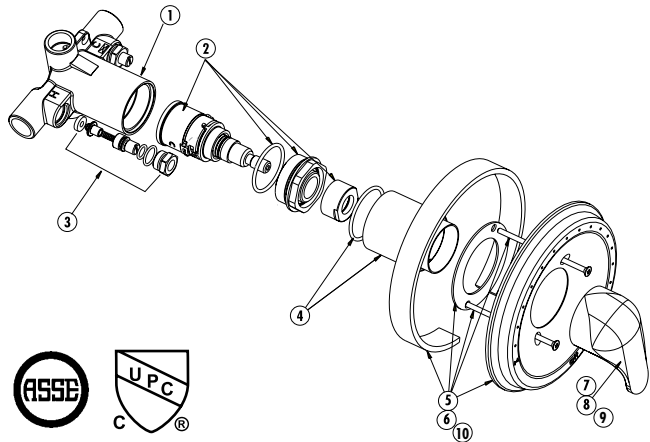
Dimensions in inches [millimeters]

**TROUBLESHOOTING**

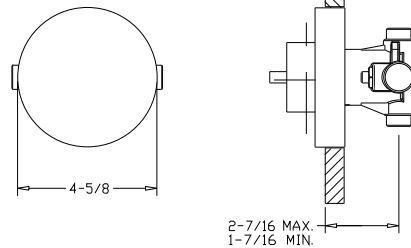
| Description               | Troubleshooting   | Repair Kit No. |
|---------------------------|---|----------------|
| Cartridge Kit             | <ul style="list-style-type: none"> <li>Water leaks at valve stem and/or bonnet.</li> <li>Water leaks at valve shutoff.</li> <li>Water temperature changes during shower.</li> </ul> | 220 060        |
| Checkstop Replacement Kit | <ul style="list-style-type: none"> <li>Checkstop leaks or will not shut off completely.</li> </ul>  | 900 050        |

**Figure 3**

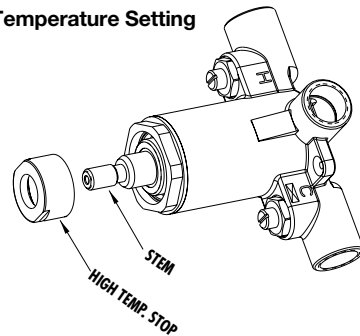
| ITEM# | KIT#    | DESCRIPTION                        |
|-------|---------|------------------------------------|
| 1     | N/A     | Valve Body                         |
| 2     | 220 060 | Cartridge Kit                      |
| 3     | 900 050 | Checkstop Replacement Kit          |
| 4     | 220 054 | Sleeve Kit                         |
| 5     | 220 051 | Metal Trim Plate Kit For e710      |
| 6     | 220 053 | ABS Trim Plate Kit For e705        |
| 7     | 220 050 | Metal Handle Kit For e710          |
| 8     | 220 052 | ABS Handle Kit For e705            |
| 9     | 220 079 | Dome Metal Handle Kit For e707     |
| 10    | 220 078 | Metal Flat Trim Plate Kit For e707 |



**Figure 4: Rough-In Guide**



**Figure 5: Max. Temperature Setting**



**WARNING:** This product contains chemicals known to the State of California to cause cancer and birth defects or other reproductive harm. For more information: [www.watts.com/prop65](http://www.watts.com/prop65)

**POWERS™**

A Watts Water Technologies Company