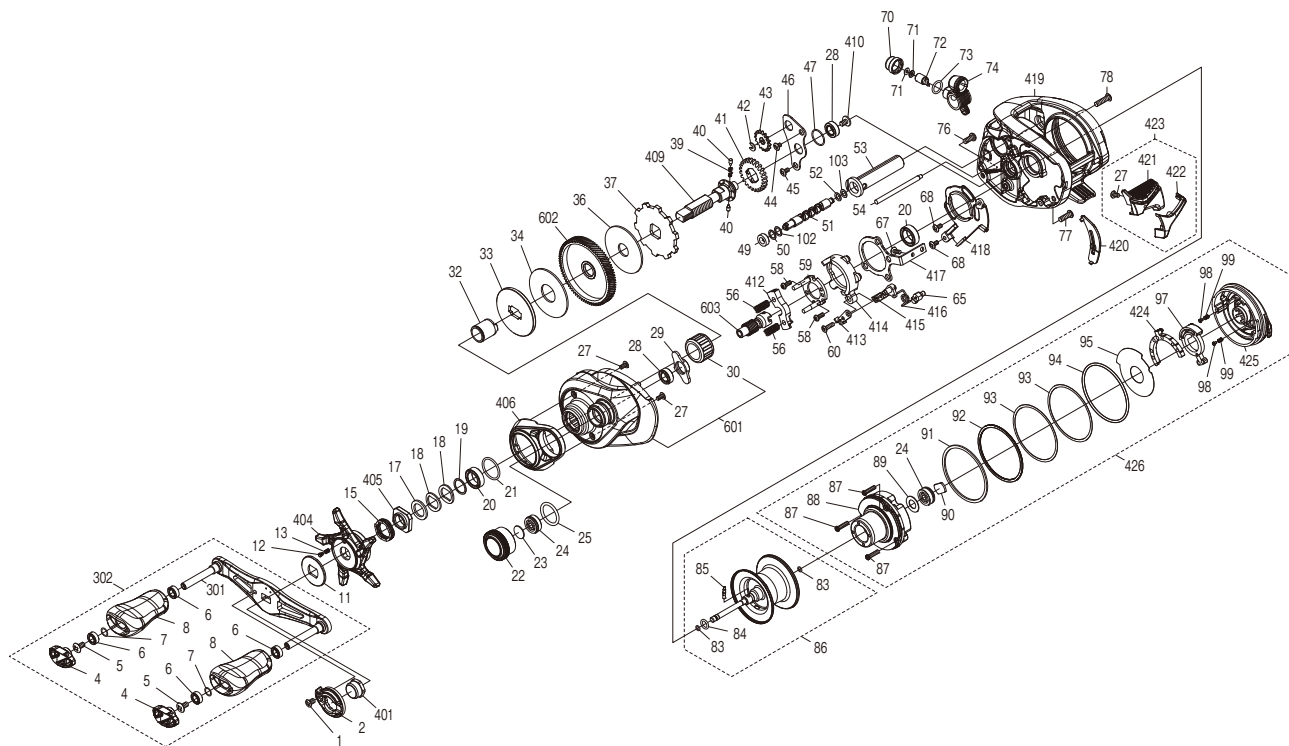


# SHIMANO

## Metanium DC

## METDC71XGA



(51RL696A41X)

#	Part No.	Description	#	Part No.	Description	#	Part No.	Description
1	10DN7	Screw	45	10MT2	Screw	94	144NL	O Ring
2	1017T	Handle Nut Plate	46	1005S	Drive Shaft Retainer	95	144NR	B Side Id Sticker
4	10RLX	Handle Knob Seal	47	10SZ4	O Ring	97	1469R	DC Dial Assembly
5	10DQN	Screw	49	10PXY	Bushing	98	144NT	Click Pin
6	104VX	Ball Bearing	50	10GFG	Washer	99	10T6Z	Click Spring
7	104FH	Washer	51	10EET	Worm Shaft	102	10R3Z	Washer
8	10RMU	Handle Knob	52	100T8	Washer	103	10GFJ	Washer
11	101JC	Star Drag Click Plate	53	1005Z	Level Wind Guard	301	1469U	Handle Shank Assembly
12	10B27	Click Pin	54	1006J	Level Wind Guide	302	1469V	Handle Assembly
13	10988	Click Spring	56	144NZ	Yoke Spring	401	101DW	Handle Nut
15	10A78	Star Drag Spring	58	10LVH	Screw	404	144P9	Star Drag
17	10J1N	Star Drag Spacer	59	144P7	Clutch Cam Retainer	405	10A0C	Star Drag Nut
18	10D60	Drag Spring Washer	60	10559	Screw	406	144P6	Clutch Button Attachment
19	105PW	Bearing Washer	65	10RWD	Clutch Spring Holder	409	10RWL	Drive Shaft
20	10EX8	Ball Bearing	67	103C0	Screw	410	10PVU	Screw
21	1027V	O Ring	68	100BD	Screw	412	13T1U	Yoke
22	144P5	Cast Control Cap	70	10FJB	Pawl Cap	413	10RWF	Clutch Pawl B
23	1057Q	Spacer B	71	10CFW	Washer	414	10SKS	Clutch Cam
24	10S37	Ball Bearing	72	100BT	Line Guide Pawl	415	10RWC	Clutch Pawl A
25	10LA9	O Ring	73	108WQ	O Ring	416	14026	Clutch Pawl Spring
27	1055J	Screw	74	1469M	Line Guide Pawl Holder Assembly	417	10RW6	Clutch Plate
28	105BP	Ball Bearing	76	10LZD	Screw	418	10RVT	Clutch Guard
29	144NV	Retainer	77	101GQ	Screw	419	146A0	Frame Assembly
30	1005E	Roller Clutch Bearing	78	103LN	Screw	420	1007C	Clutch Bar Guide
32	10BN3	Roller Clutch Inner Tube	83	10E7H	O Ring	421	10RW1	Clutch Button
33	10RW3	Pressure Plate	84	10TNF	O Ring	422	10RWB	Clutch Button Cover
34	10RWJ	Drag Washer	85	10MD0	Spool Clutch Pin	423	100P2	Clutch Button Assembly
36	10CJ1	Drag Washer	86	1469P	Spool Assembly	424	146A1	BR Dial Assembly
37	1021K	Anti-Reverse Ratchet	87	141R6	Screw	425	144NP	B Side Plate
39	10JDX	Idle Gear Spring	88	144NU	Digital Control Assembly	426	146A2	B Side Plate Assembly
40	10HJF	Idle Gear Pin	89	10B94	Bearing Seal	601	146A4	A Side Plate Assembly
41	10057	Idle Gear A	90	144NQ	Spacer B	602	13UYJ	Drive Gear
42	105NC	E Lock	91	144NM	Washer	603	10072	Pinion Gear
43	10FNX	Idle Gear C	92	144NN	Washer			
44	10MPF	Screw	93	1024A	Washer			

Please note that the number of adjusting washers may not be the same as shown in the exploded views.  
(Adjustment will vary with each individual product.)

(240227)\_002