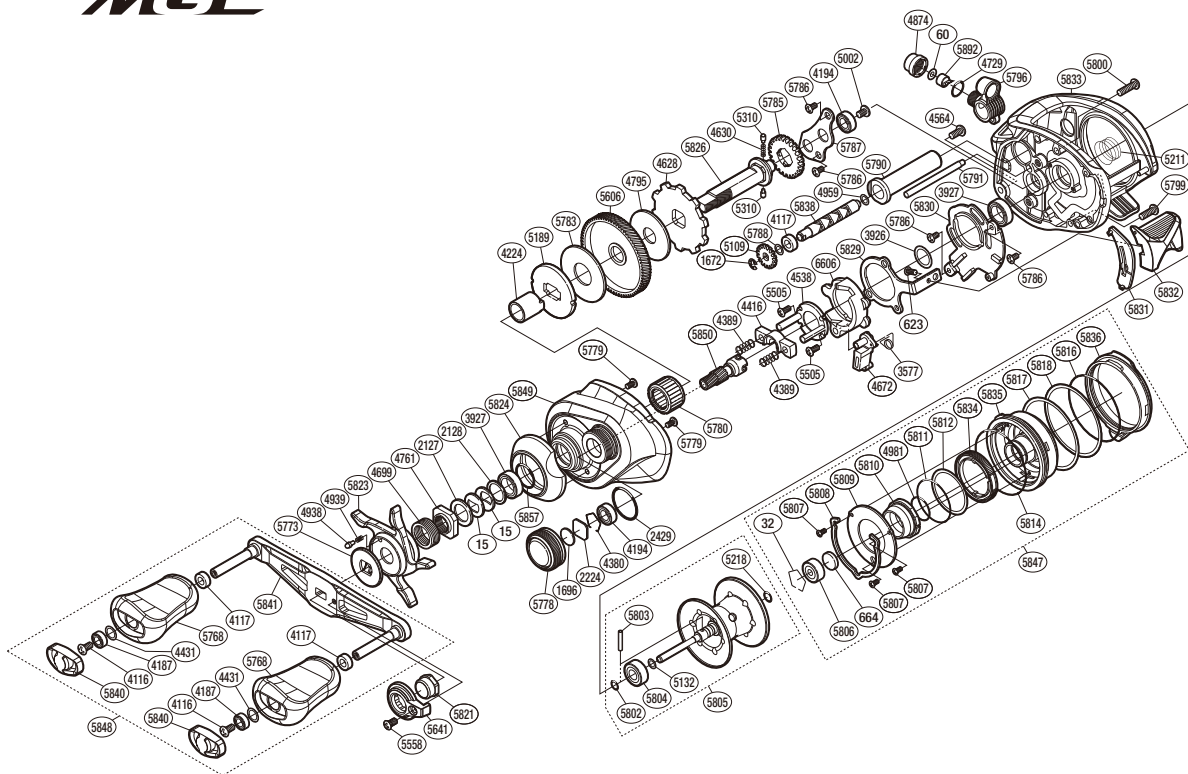


SHIMANO

Bantam SA-RB
MGL

BTM MGL-XGL



The (5804) Bearing, (5803) Spool clutch pin, and (5780) Roller clutch cannot be replaced by the customer. To replace these parts, please request after-sales service.

Please note that the number of adjusting washers may not be the same as shown in the exploded views. (Adjustment will vary with each individual product.)

(51RL107000X)

Part No.	Description	Part No.	Description	Part No.	Description
BNT0015	Drag Spring Washer	BNT4939	Click Spring	BNT5807	Screw
BNT0032	Bearing Retainer	BNT4959	Washer	BNT5808	Cam Lever Retainer
BNT0060	Spacer	BNT4981	O Ring	BNT5809	Br Dial Retainer Plate
BNT0623	Screw	BNT5002	Screw	BNT5810	Brake Pipe Gear Assembly
BNT0664	Spacer B	BNT5109	Idle Gear	BNT5811	O Ring
BNT1672	E Lock	BNT5132	Washer	BNT5812	Washer
BNT1696	Cast Control Spacer	BNT5189	Pressure Plate	BNT5814	O Ring
BNT2127	Star Drag Spacer	BNT5211	Bearing Pressure Spring	BNT5816	O Ring
BNT2128	Bearing Washer	BNT5218	O Ring	BNT5817	Washer
BNT2224	Spool Tension Spacer	BNT5310	Idle Gear Pin	BNT5818	Washer
BNT2429	O Ring	BNT5505	Screw	BNT5821	Handle Nut
BNT3577	Clutch Pawl Spring	BNT5558	Screw	BNT5823	Star Drag
BNT3926	Washer	BNT5606	Drive Gear	BNT5824	Clutch Button Attachment
BNT3927	Ball Bearing	BNT5641	Handle Nut Plate	BNT5826	Drive Shaft
BNT4116	Screw	BNT5768	Handle Knob	BNT5829	Clutch Plate
BNT4117	Bushing	BNT5773	Star Drag Click Plate	BNT5830	Clutch Guard
BNT4187	Ball Bearing	BNT5778	Cast Control Cap	BNT5831	Clutch Bar Guide B
BNT4194	Ball Bearing	BNT5779	Screw	BNT5832	Clutch Lever Assembly
BNT4224	Roller Clutch Inner Tube	BNT5780	Roller Clutch Bearing	BNT5833	Frame Assembly
BNT4380	Retainer	BNT5783	Drag Washer	BNT5834	Br Dial
BNT4389	Yoke Spring	BNT5785	Idle Gear	BNT5835	Brake Case Assembly
BNT4416	Yoke	BNT5786	Screw	BNT5836	Right Side Plate Cam Lever
BNT4431	Washer	BNT5787	Drive Shaft Retainer	BNT5838	Worm Shaft
BNT4538	Clutch Cam Retainer	BNT5788	Washer	BNT5840	Handle Knob Seal
BNT4564	Screw	BNT5790	Level Wind Guard	BNT5841	Handle Shank Assembly
BNT4628	Anti-Reverse Ratchet	BNT5791	Level Wind Guide	BNT5847	Right Side Plate Assembly
BNT4630	Idle Gear Spring	BNT5796	Line Guide Pawl Holder Assembly	BNT5848	Handle Assembly
BNT4672	Clutch Pawl	BNT5799	Screw	BNT5849	Left Side Plate
BNT4699	Star Drag Spring	BNT5800	Screw	BNT5850	Pinion Gear
BNT4729	O Ring	BNT5802	O Ring	BNT5857	O Ring
BNT4761	Star Drag Nut	BNT5803	Spool Clutch Pin	BNT5892	Line Guide Pawl
BNT4795	Drag Washer	BNT5804	Ball Bearing	BNT6606	Clutch Cam
BNT4874	Pawl Cap	BNT5805	Spool Assembly (With Bearing)		
BNT4938	Click Pin	BNT5806	Ball Bearing	BNT4692	B-100 Oil (accessory)